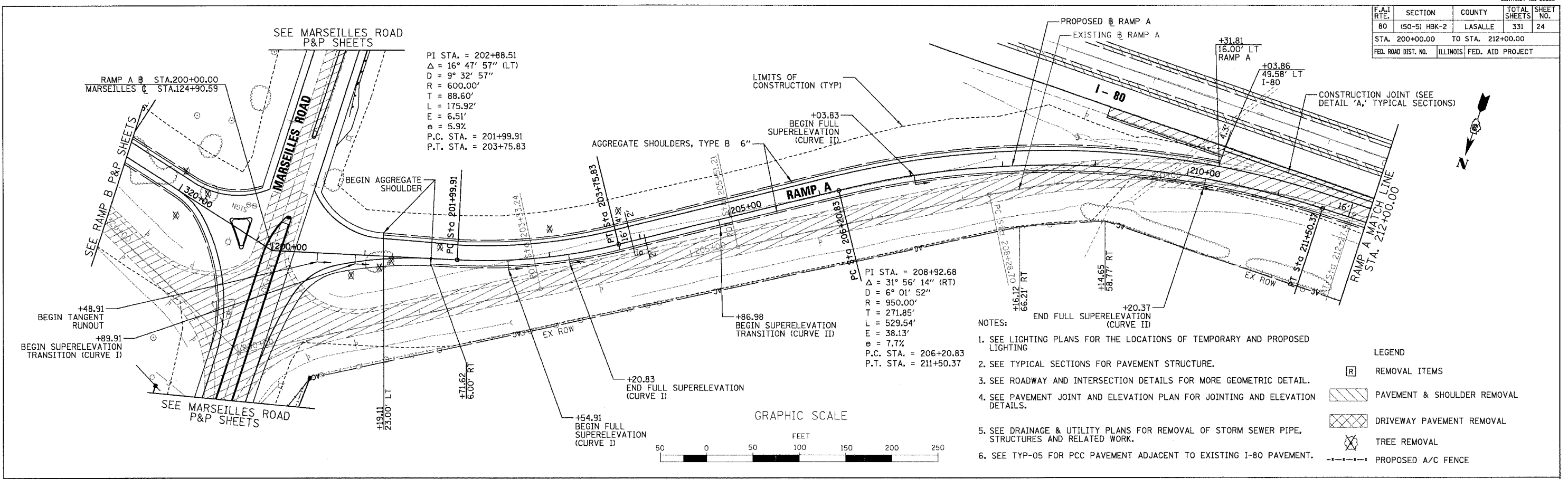


F.A.I. RTE.	SECTION	COUNTY	TOTAL SHEETS	SHEET NO.
80	(50-5) HBK-2	LASALLE	331	24
STA. 200+00.00		TO STA. 212+00.00		
FED. ROAD DIST. NO.		ILLINOIS		FED. AID PROJECT

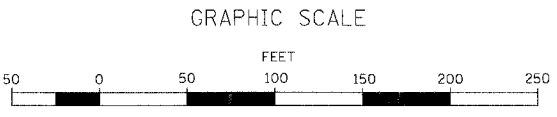
PLAN	SURVEYED	DATE
	PLOTTED	BY
	CHECKED	
	NO. OF WAYS CHECKED	
	NO. OF WAYS CHECKED	
	NO. OF WAYS CHECKED	
	NO. OF WAYS CHECKED	
	NO. OF WAYS CHECKED	
	NO. OF WAYS CHECKED	
	NO. OF WAYS CHECKED	



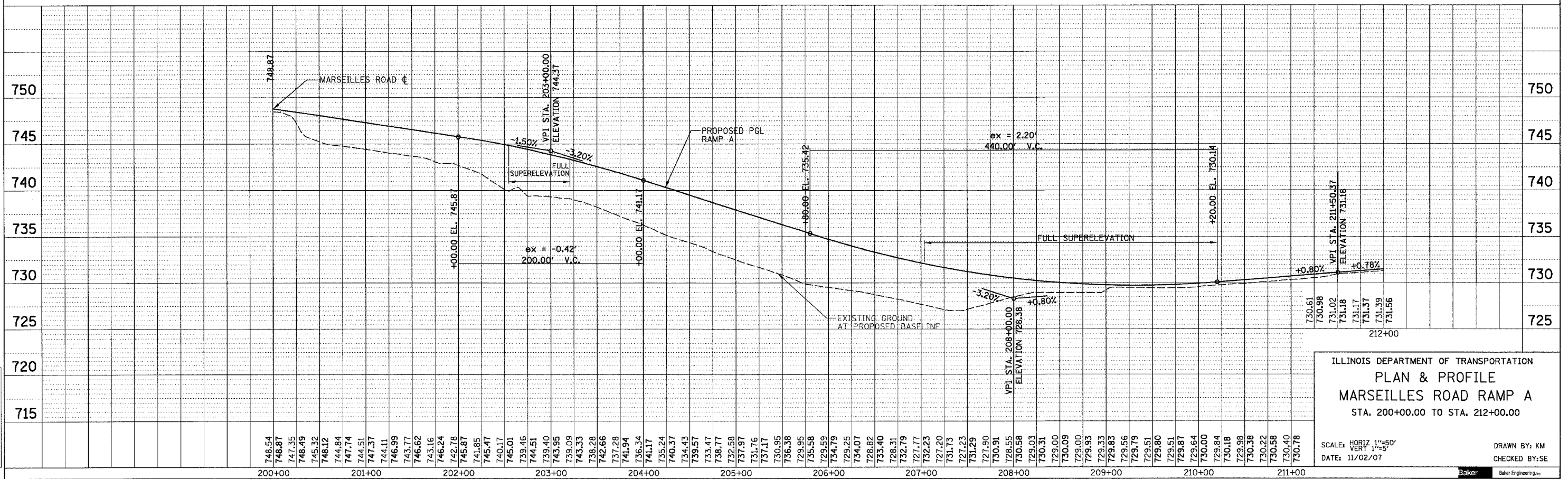
- NOTES:
- SEE LIGHTING PLANS FOR THE LOCATIONS OF TEMPORARY AND PROPOSED LIGHTING
 - SEE TYPICAL SECTIONS FOR PAVEMENT STRUCTURE.
 - SEE ROADWAY AND INTERSECTION DETAILS FOR MORE GEOMETRIC DETAIL.
 - SEE PAVEMENT JOINT AND ELEVATION PLAN FOR JOINTING AND ELEVATION DETAILS.
 - SEE DRAINAGE & UTILITY PLANS FOR REMOVAL OF STORM SEWER PIPE, STRUCTURES AND RELATED WORK.
 - SEE TYP-05 FOR PCC PAVEMENT ADJACENT TO EXISTING I-80 PAVEMENT.

LEGEND

[R]	REMOVAL ITEMS
[Hatched Box]	PAVEMENT & SHOULDER REMOVAL
[Cross-hatched Box]	DRIVEWAY PAVEMENT REMOVAL
[X]	TREE REMOVAL
[Dashed Line]	PROPOSED A/C FENCE



PROFILE	SURVEYED	DATE
	PLOTTED	BY
	CHECKED	
	NO. OF WAYS CHECKED	
	NO. OF WAYS CHECKED	
	NO. OF WAYS CHECKED	
	NO. OF WAYS CHECKED	
	NO. OF WAYS CHECKED	
	NO. OF WAYS CHECKED	



ILLINOIS DEPARTMENT OF TRANSPORTATION
PLAN & PROFILE
MARSEILLES ROAD RAMP A
 STA. 200+00.00 TO STA. 212+00.00

SCALE: HORIZ. 1"=50'
 VERT. 1"=5'

DATE: 11/02/07

DRAWN BY: KM
 CHECKED BY: SE



h:\107496\3.0 del\verables\3.2 roadway\design\sheet\80_RPP04.rpt
 11/5/2007