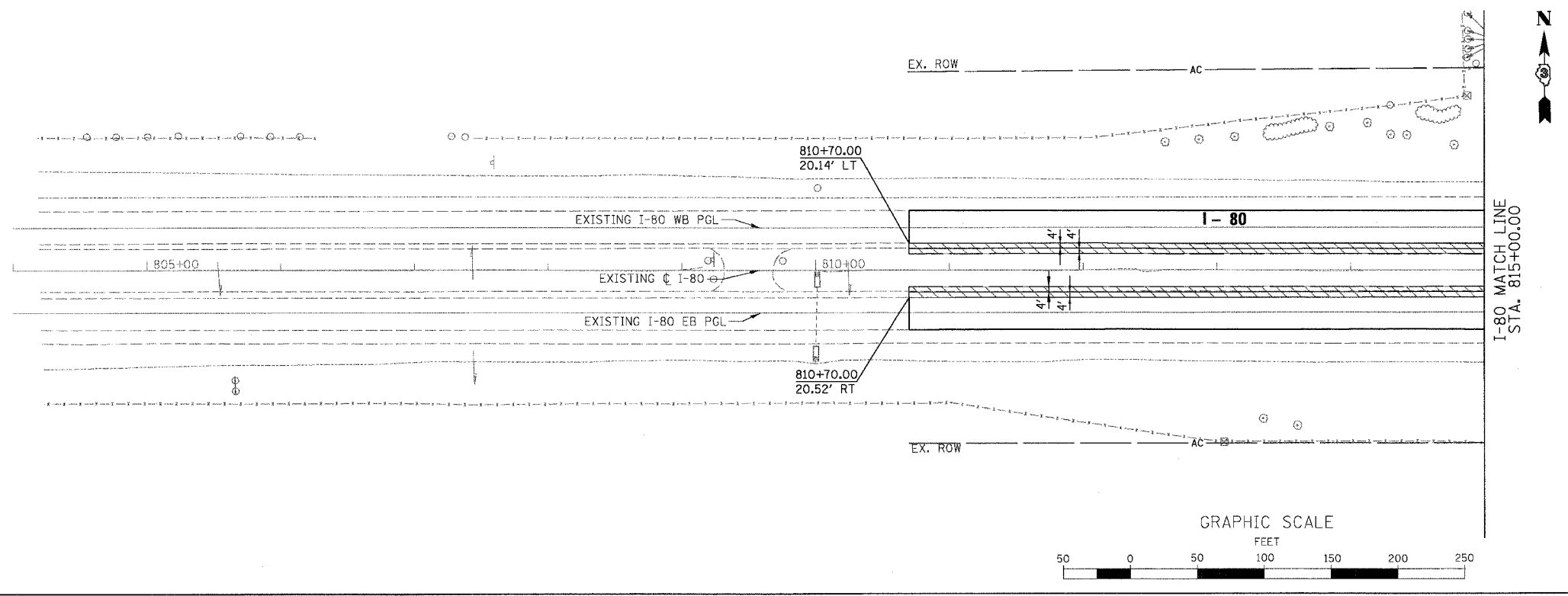


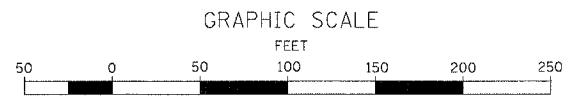
F.A.I. RTE.	SECTION	COUNTY	TOTAL SHEETS	SHEET NO.
80	(50-5) HBK-2	LASALLE	331	34
STA. 804+00.00 TO STA. 815+00.00				
FED. ROAD DIST. NO.		ILLINOIS	FED. AID PROJECT	

- NOTES:
- SEE LIGHTING PLANS FOR THE LOCATIONS OF TEMPORARY AND PROPOSED LIGHTING
 - SEE TYPICAL SECTIONS FOR PAVEMENT STRUCTURE.

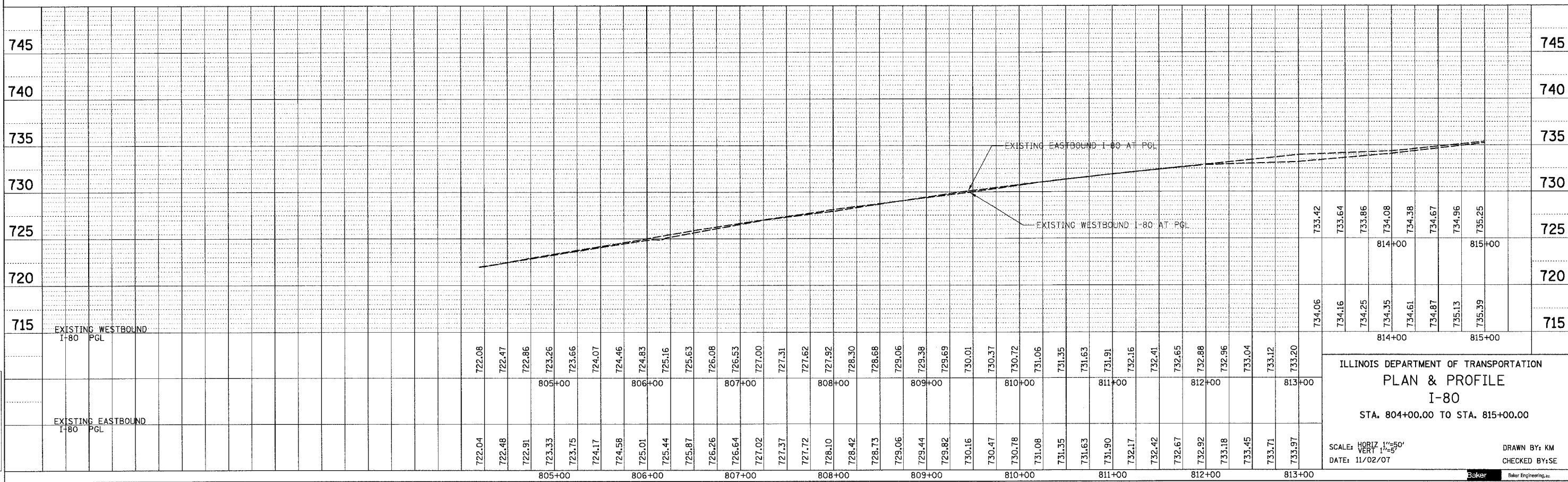
PLAN	SURVEYED	DATE
NOTE BOOK NO.	BY	
NO.	DATE	



- LEGEND
- PROPOSED A/C FENCE
 - [R] REMOVAL ITEMS
 - [Hatched Box] PAVEMENT & SHOULDER REMOVAL
 - [Cross-hatched Box] DRIVEWAY PAVEMENT REMOVAL
 - [Tree Symbol] TREE REMOVAL



PROFILE	SURVEYED	DATE
NOTE BOOK NO.	BY	
NO.	DATE	



ILLINOIS DEPARTMENT OF TRANSPORTATION
PLAN & PROFILE
I-80
 STA. 804+00.00 TO STA. 815+00.00

SCALE: HORIZ 1"=50'
 VERT 1"=5'

DATE: 11/02/07

DRAWN BY: KM
 CHECKED BY: SE



\\107496\3.0 dellverables\3.2 roadway\design\sheets\I80_RPP13.rpp 11/5/2007