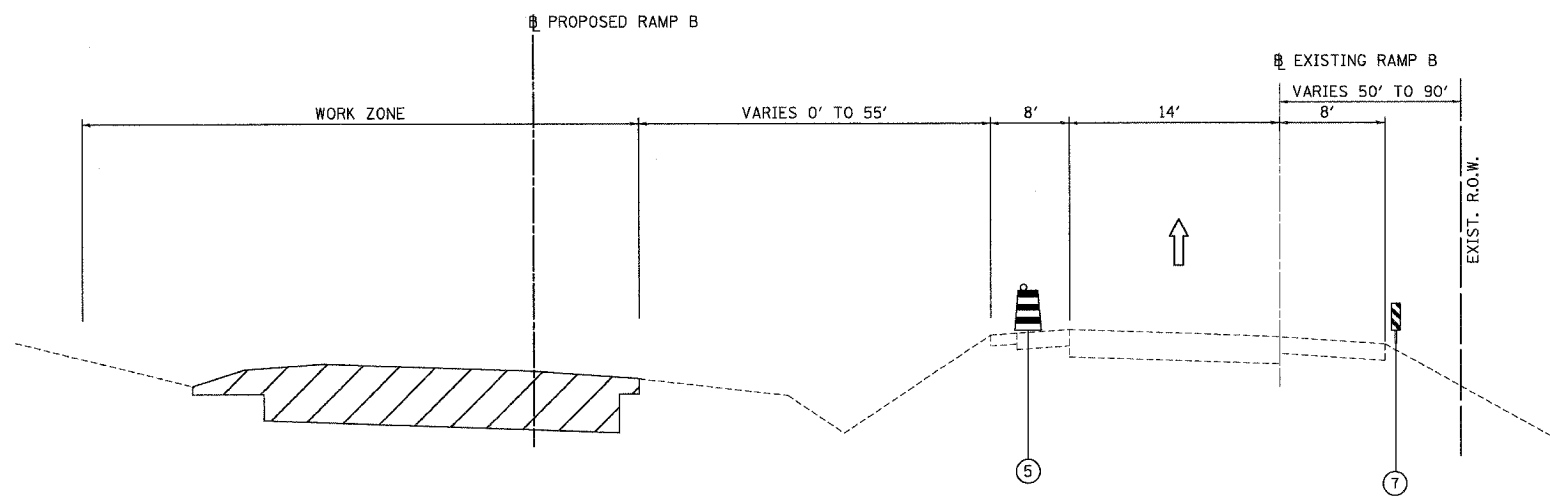


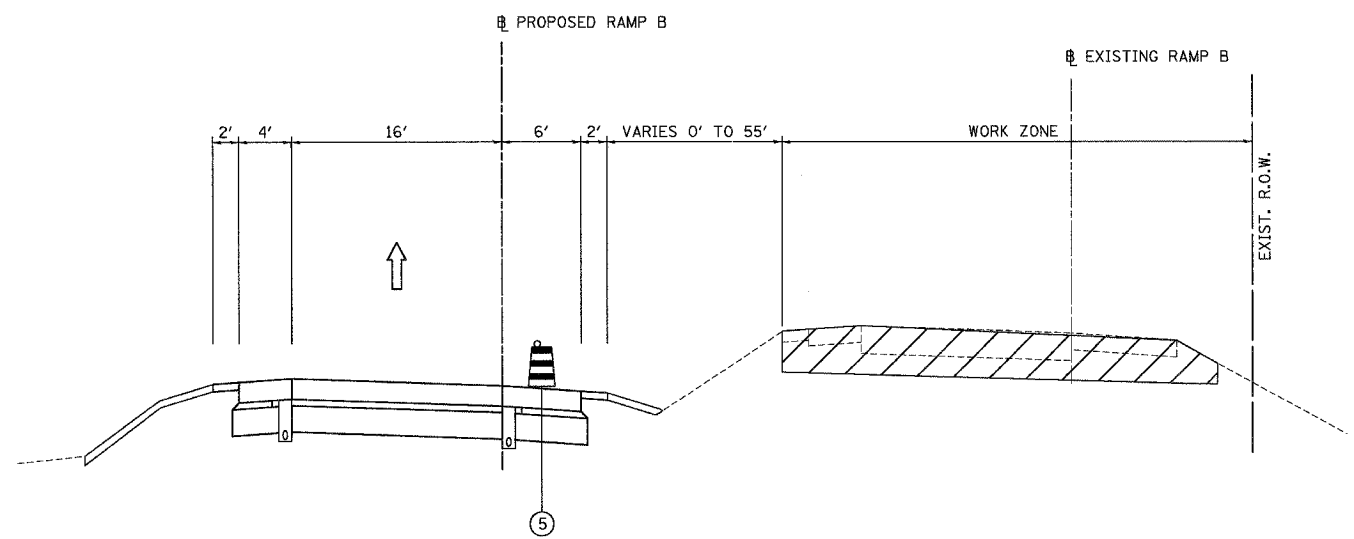
F.A.I. RTE.	SECTION	COUNTY	TOTAL SHEETS	SHEET NO.
80	(50-5) HBK-2	LASALLE	331	45
STA. TO STA.		ILLINOIS FED. AID PROJECT		

LEGEND:

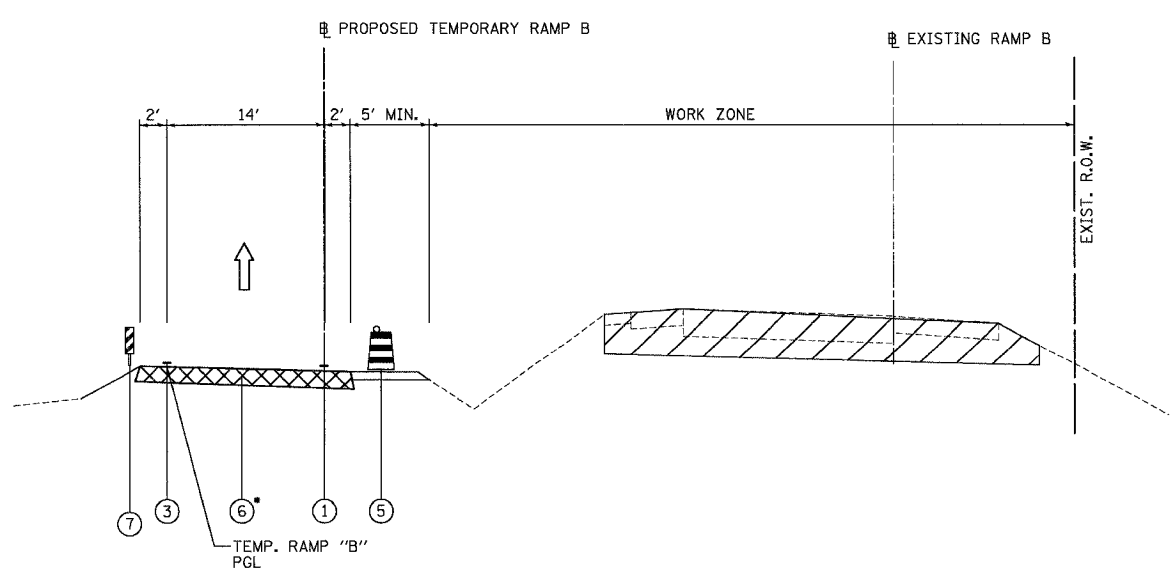
- ① TEMPORARY PAVEMENT MARKING LINE, 4 INCHES (WHITE)
- ② TEMPORARY PAVEMENT MARKING LINE, 4 INCHES (DOUBLE YELLOW)
- ③ TEMPORARY PAVEMENT MARKING LINE, 4 INCHES (YELLOW)
- ④ TEMPORARY PAVEMENT MARKING LINE, SKIP-DASH, 4 INCHES (WHITE)
- ⑤ DRUM WITH STEADY BURNING LIGHT
- ⑥ TEMPORARY PAVEMENT
- ⑦ DOUBLE VERTICAL PANELS (BACK TO BACK) WITH BI-DIRECTIONAL STEADY BURNING LIGHTS
- ⑧ TEMPORARY CONCRETE BARRIER



MARSEILLES ROAD RAMP B STAGE 1A
STA. 310+50.00 TO STA. 321+20.18



MARSEILLES ROAD RAMP B STAGE 1B
STA. 310+50.00 TO STA. 321+20.18



MARSEILLES ROAD RAMP B STAGE 1B
STA. 300+00.00 TO STA. 310+50.00
*TEMPORARY RAMP STA. 856+08.90 (I-80) TO STA. 312+04.67

*SEE DETAIL "A" ON SHEET MOT-02 FOR TEMPORARY PAVEMENT DESIGN

- WORK ZONE
- TEMPORARY PAVEMENT



REVISIONS	
NAME	DATE

ILLINOIS DEPARTMENT OF TRANSPORTATION

MAINTENANCE OF TRAFFIC

TYPICAL CROSS-SECTIONS

MARSEILLES ROAD RAMP B

SCALE: 1"=50'

DATE: 11/02/07

DRAWN BY: KM
CHECKED BY: SE