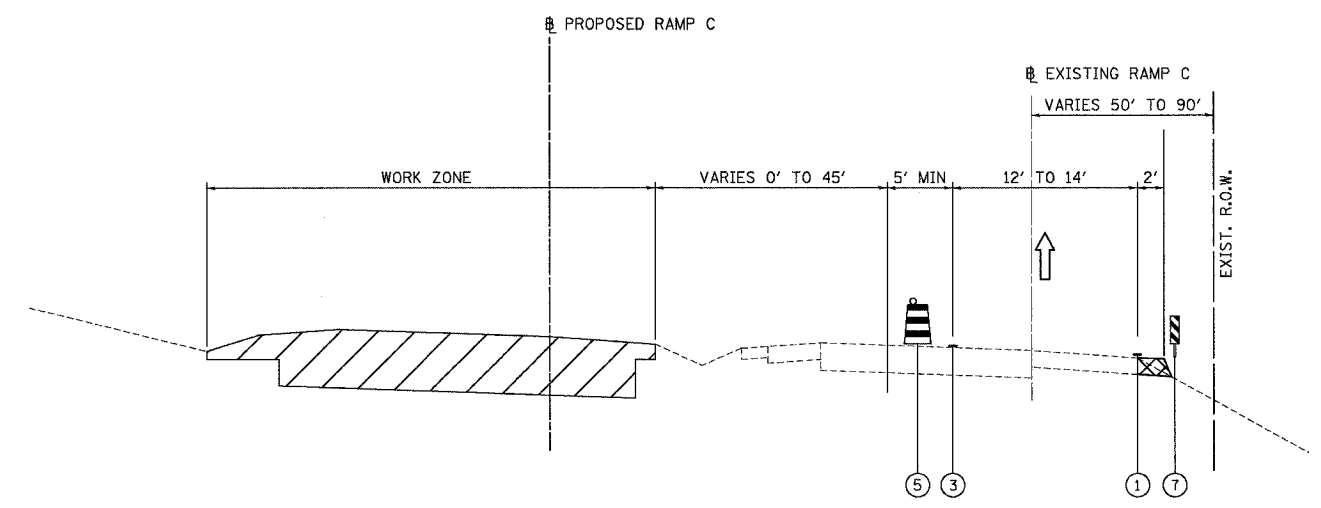


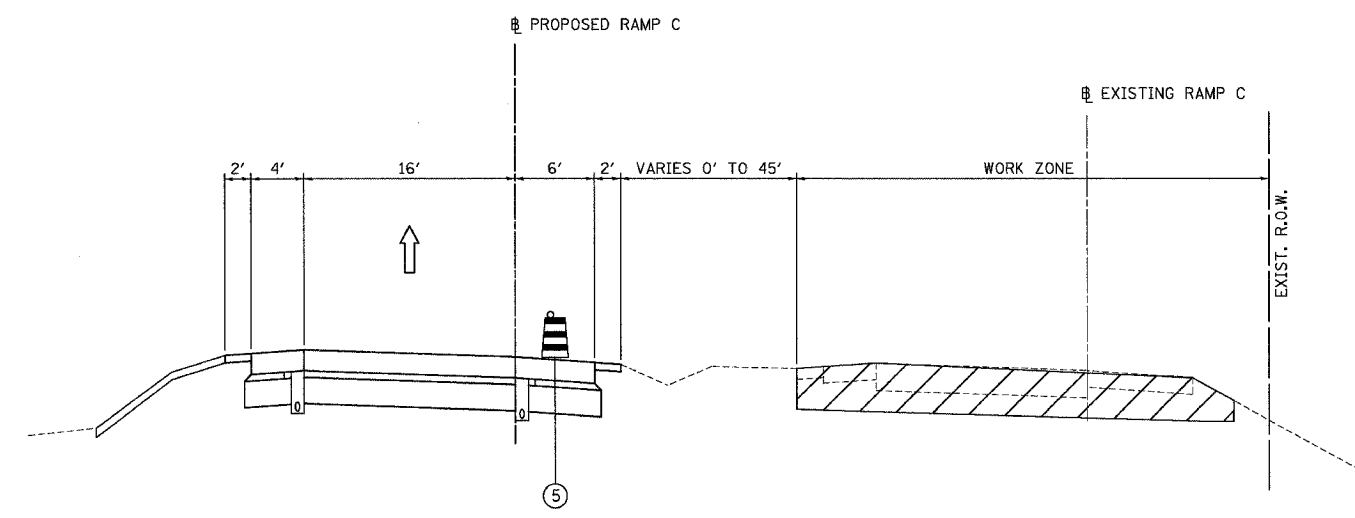
F.A.I. RTE.	SECTION	COUNTY	TOTAL SHEETS	SHEET NO.
80	(50-5) HBK-2	LASALLE	331	46
STA.		TO STA.		
FED. ROAD DIST. NO.		ILLINOIS FED. AID PROJECT		

- LEGEND:**
- ① TEMPORARY PAVEMENT MARKING LINE, 4 INCHES (WHITE)
 - ② TEMPORARY PAVEMENT MARKING LINE, 4 INCHES (DOUBLE YELLOW)
 - ③ TEMPORARY PAVEMENT MARKING LINE, 4 INCHES (YELLOW)
 - ④ TEMPORARY PAVEMENT MARKING LINE, SKIP-DASH, 4 INCHES (WHITE)
 - ⑤ DRUM WITH STEADY BURNING LIGHT
 - ⑥ TEMPORARY PAVEMENT
 - ⑦ DOUBLE VERTICAL PANELS (BACK TO BACK) WITH BI-DIRECTIONAL STEADY BURNING LIGHTS
 - ⑧ TEMPORARY CONCRETE BARRIER

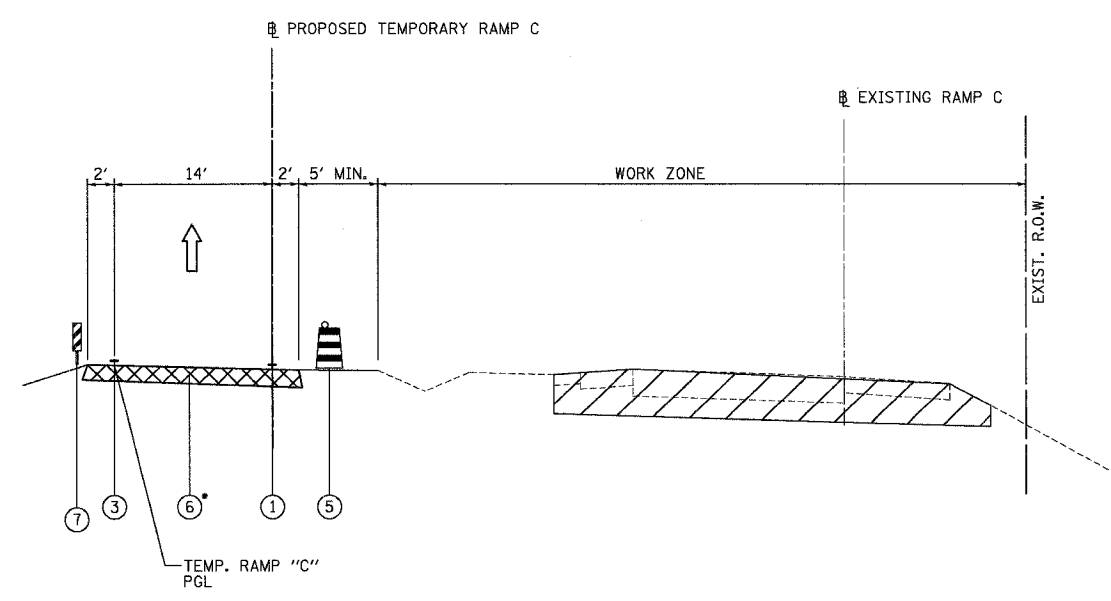
MARSEILLES ROAD RAMP C STAGE 2A
 STA. 413+00.00 TO STA. 421+15.21



MARSEILLES ROAD RAMP C STAGE 2B
 STA. 413+00.00 TO STA. 421+15.21



MARSEILLES ROAD RAMP C STAGE 2B
 STA. 400+00.00 TO STA. 413+00.00
 *TEMPORARY RAMP STA. 827+02.81 (I-80) TO STA. 414+25.00



*SEE DETAIL "A" ON SHEET MOT-02 FOR TEMPORARY PAVEMENT DESIGN

- WORK ZONE
- TEMPORARY PAVEMENT



REVISIONS	
NAME	DATE

ILLINOIS DEPARTMENT OF TRANSPORTATION
**MAINTENANCE OF TRAFFIC
 TYPICAL CROSS-SECTIONS**
 MARSEILLES ROAD RAMP C
 SCALE: 1"=50'
 DATE: 11/02/07
 DRAWN BY: KM
 CHECKED BY: SE