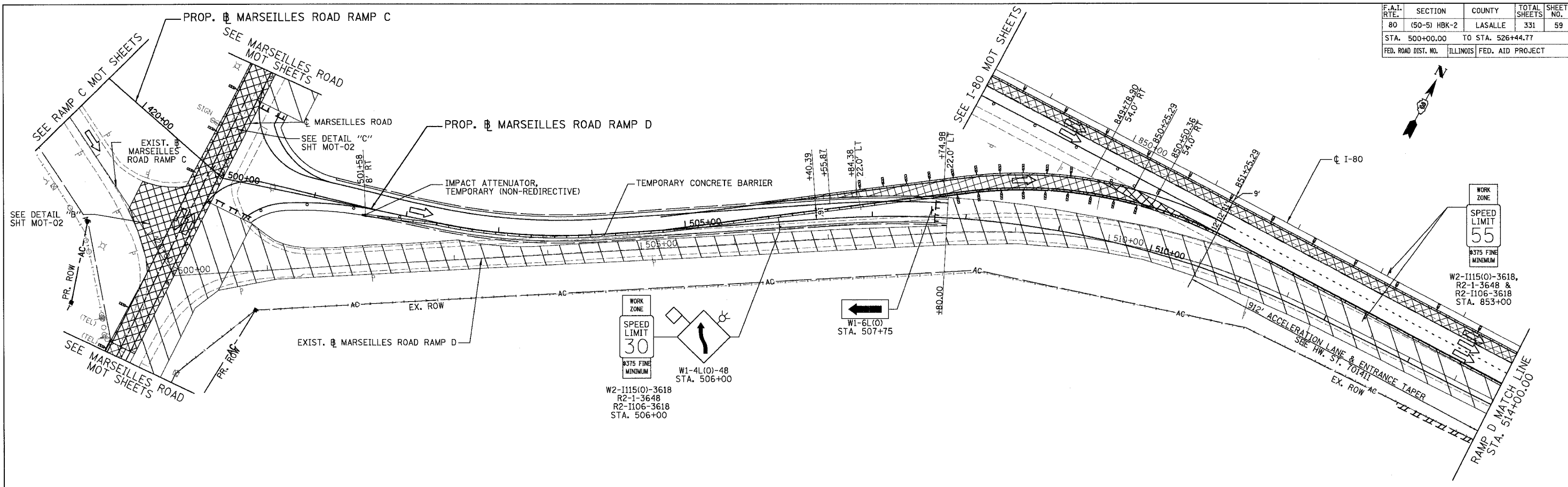
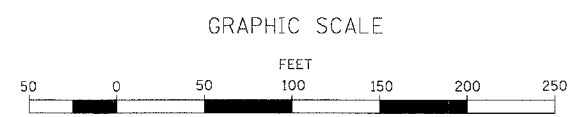


F.A.I. RTE.	SECTION	COUNTY	TOTAL SHEETS	SHEET NO.
80	(50-5) HBK-2	LASALLE	331	59
STA. 500+00.00		TO STA. 526+44.77		
FED. ROAD DIST. NO.		ILLINOIS	FED. AID PROJECT	



- LEGEND**
- DRUMS WITH BI-DIRECTIONAL STEADY BURN LIGHTS @ 50' CENTERS, 25' CENTERS ALONG TAPERS AND 12' CENTERS ALONG RADIUS RETURNS
  - ➔ TRAFFIC DIRECTION
  - ▨ DOUBLE VERTICAL PANELS (BACK TO BACK) WITH BI-DIRECTIONAL STEADY BURNING LIGHTS
  - 1 TYPE III BARRICADES WITH FLASHING LIGHTS
  - ▨ WORK ZONE
  - ▨ TEMPORARY PAVEMENT
  - ➔ ARROW BOARD
  - ▬ TEMP. CONCRETE BARRIER



REVISIONS	
NAME	DATE

ILLINOIS DEPARTMENT OF TRANSPORTATION  
**MAINTENANCE OF TRAFFIC**  
**STAGE 1B**  
 MARSEILLES ROAD RAMP D  
 SCALE: 1"=50'  
 DATE: 11/02/07  
 DRAWN BY: KM  
 CHECKED BY: SE

