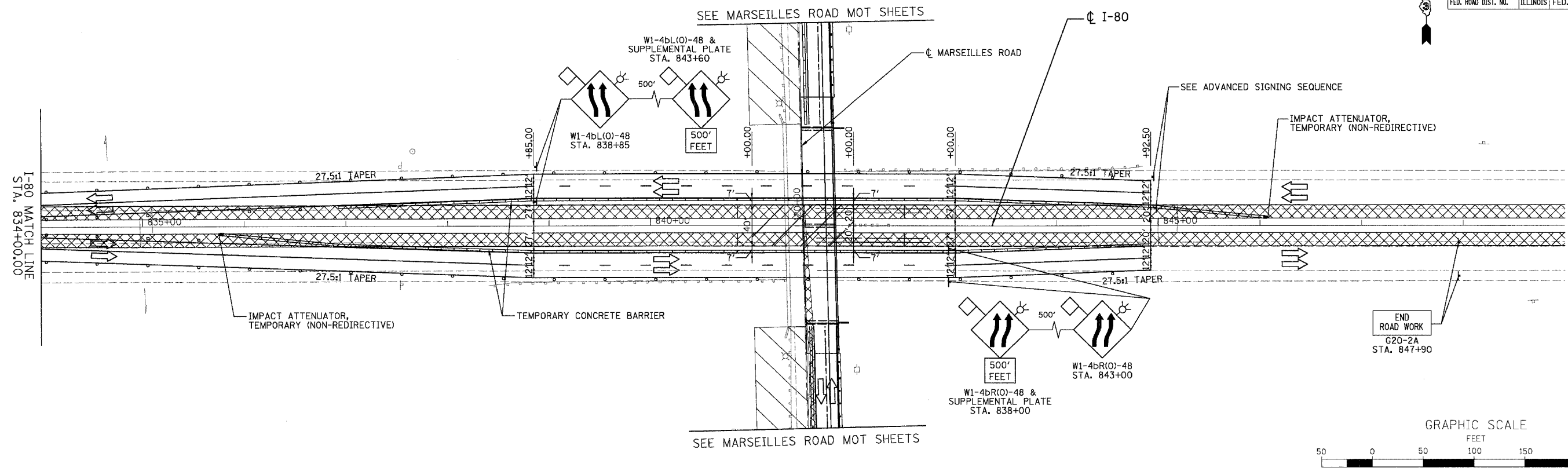
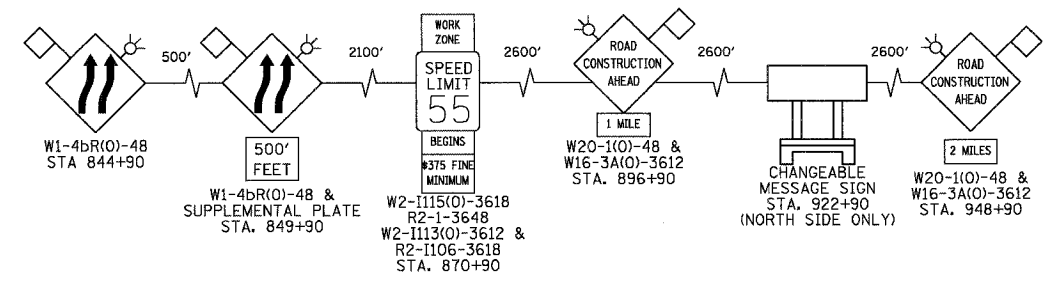


F.A.I. RTE.	SECTION	COUNTY	TOTAL SHEETS	SHEET NO.
80	(50-5) HBK-2	LASALLE	331	67
STA. 834+00.00		TO STA. 846+00.00		
FED. ROAD DIST. NO.		ILLINOIS	FED. AID PROJECT	



ADVANCED SIGNING SEQUENCE



LEGEND

- DRUMS WITH BI-DIRECTIONAL STEADY BURN LIGHTS @ 50' CENTERS, 25' CENTERS ALONG TAPERS AND 12' CENTERS ALONG RADIUS RETURNS
- TRAFFIC DIRECTION
- ⊥ DOUBLE VERTICAL PANELS (BACK TO BACK) WITH BI-DIRECTIONAL STEADY BURNING LIGHTS
- ⊥ TYPE III BARRICADES WITH FLASHING LIGHTS
- ▨ WORK ZONE
- ▩ TEMPORARY PAVEMENT
- ▬ ARROW BOARD
- TEMP. CONCRETE BARRIER

REVISIONS	
NAME	DATE

ILLINOIS DEPARTMENT OF TRANSPORTATION

**MAINTENANCE OF TRAFFIC**

**STAGE 2A**

I-80 STA. 834+00 TO STA. 846+00

SCALE: 1"=50' DATE: 11/02/07

DRAWN BY: KM CHECKED BY: SE

