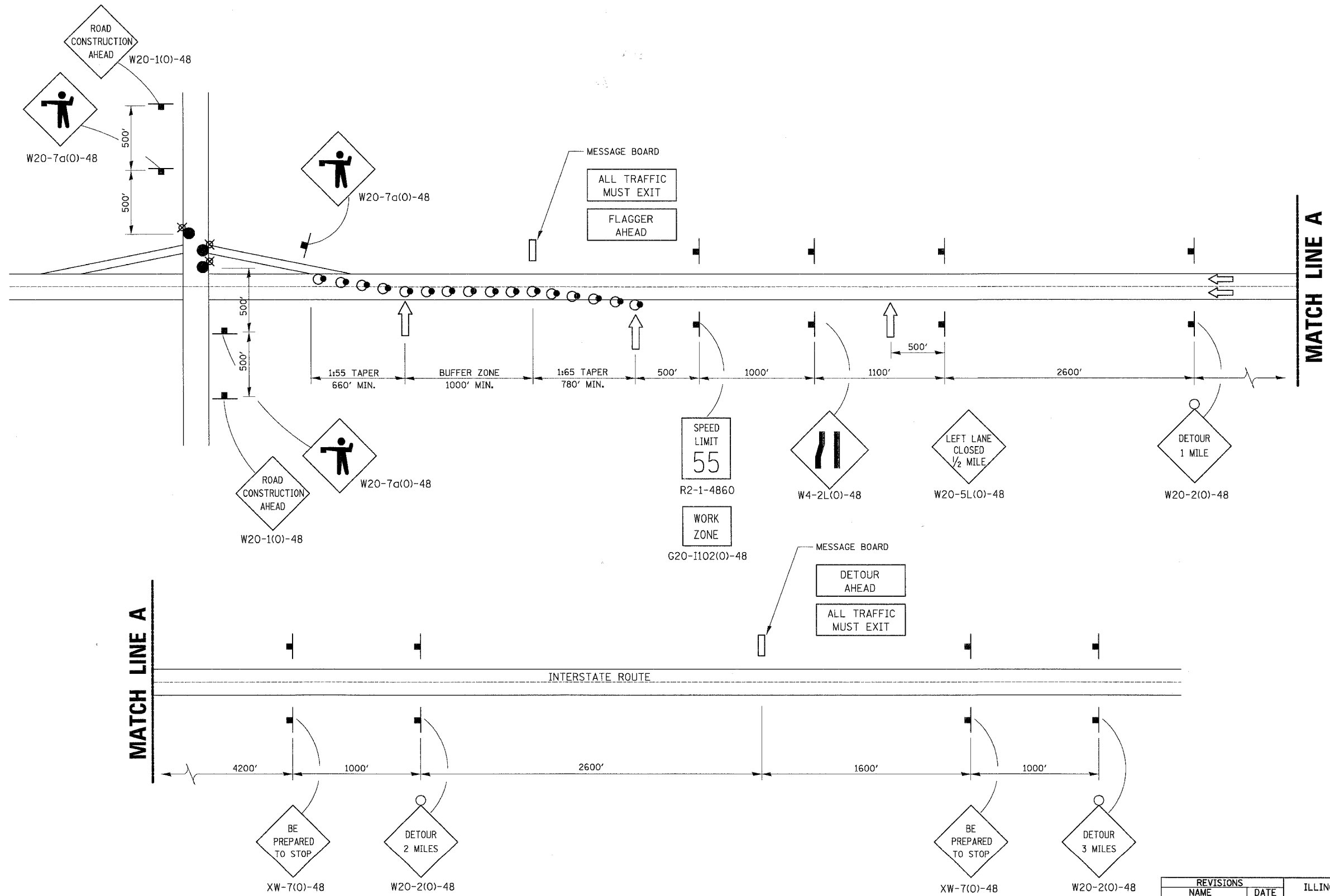


F.A.I. RTE.	SECTION	COUNTY	TOTAL SHEETS	SHEET NO.
80	(50-5) HBK-2	LASALLE	331	82a
STA. TO STA.		FED. AID PROJECT		



- DRUMS WITH STEADY BURNING LIGHTS
50' IN TAPERS AND 100' IN TANGENT ON CENTERS
- LIGHTED FLAGGER STATIONS
- ⇐ ARROWBOARD

Baker
Baker Engineering, Inc.

REVISIONS	
NAME	DATE

ILLINOIS DEPARTMENT OF TRANSPORTATION
**MAINTENANCE OF TRAFFIC
 TOTAL INTERCHANGE CLOSURE
 AT NIGHT
 (ALL TRAFFIC MUST EXIT)**
 SCALE: 1"=50'
 DATE: 11/16/07
 DRAWN BY: KM
 CHECKED BY: SE

AUG 1999
 \DETAILS\700799.DGN
 701-1

H:\07496\3.0 deliverables\3.2 roadway\design\sheets\80.MOT41a.mot
 11/20/2007