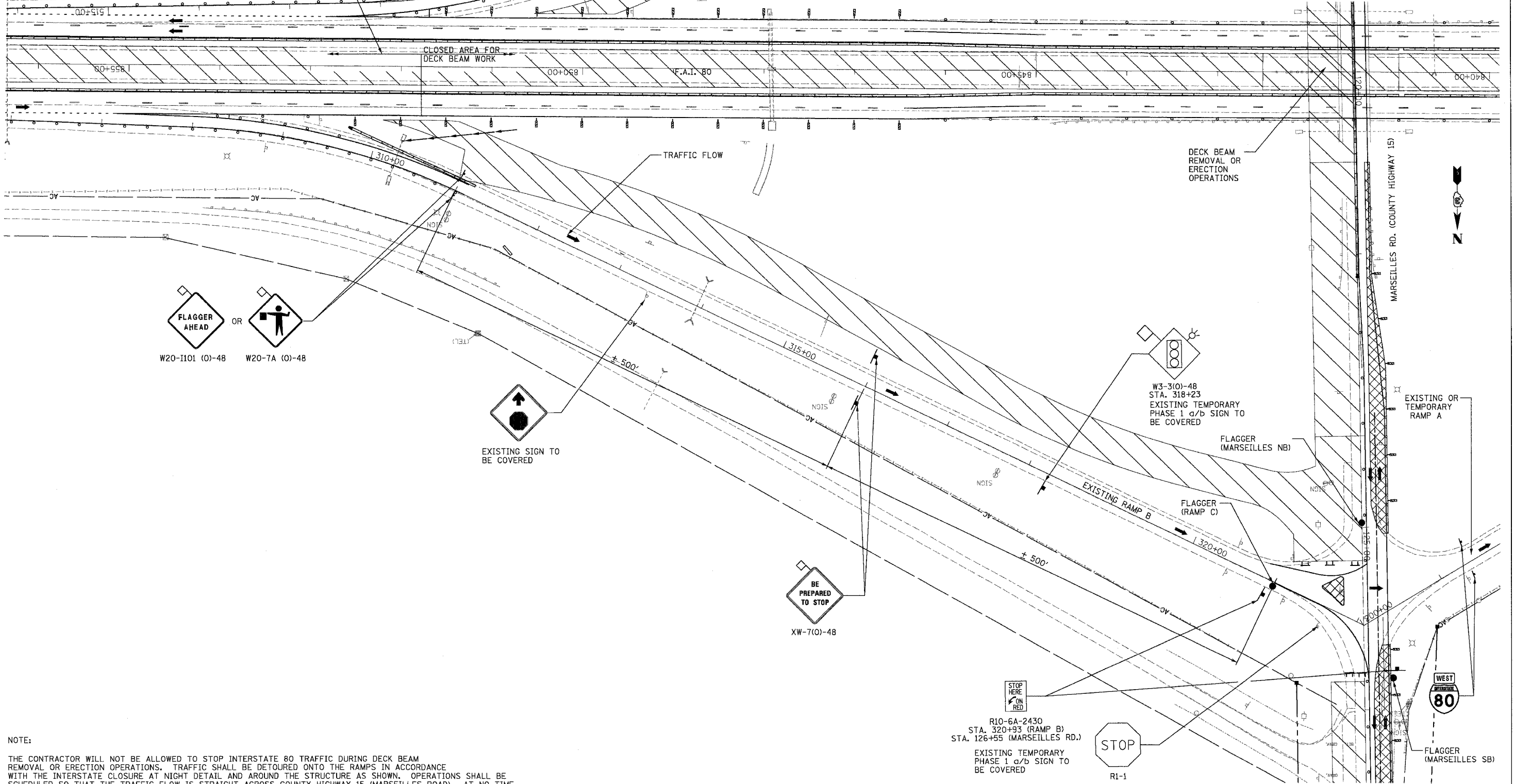


F.A.I. RTE.	SECTION	COUNTY	TOTAL SHEETS	SHEET NO.
80	(50-5) HBK-2	LASALLE	331	82c
STA.	TO STA.			
FED. ROAD DIST. NO.	ILLINOIS	FED. AID PROJECT		

INTERSTATE CLOSURE PER IDOT DISTRICT 3 STANDARD INTERSTATE CLOSURE AT NIGHT DETAIL (SEE SHEET 41a FOR DETAILS)



NOTE:

THE CONTRACTOR WILL NOT BE ALLOWED TO STOP INTERSTATE 80 TRAFFIC DURING DECK BEAM REMOVAL OR ERECTION OPERATIONS. TRAFFIC SHALL BE DETOURED ONTO THE RAMP IN ACCORDANCE WITH THE INTERSTATE CLOSURE AT NIGHT DETAIL AND AROUND THE STRUCTURE AS SHOWN. OPERATIONS SHALL BE SCHEDULED SO THAT THE TRAFFIC FLOW IS STRAIGHT ACROSS COUNTY HIGHWAY 15 (MARSEILLES ROAD). AT NO TIME SHALL A PROPOSED RAMP OR TEMPORARY RAMP BE USED WITH AN EXISTING RAMP. A PROPOSED RAMP MAY BE USED WITH AN EXISTING RAMP. FOR DETAILS SEE FOLLOWING SHEETS:  
MOT-8, 10 FOR PHASE 1A  
MOT-15, 17 FOR PHASE 1B  
MOT-21, 23 FOR PHASE 2A  
MOT-27, 28 FOR PHASE 2B

DETOUR OF I-80 INTERSTATE TRAFFIC SHALL BE AS APPROVED BY THE ENGINEER AND SHALL BE LIMITED TO NIGHTTIME OPERATION (7:00 PM TO 6:00 AM) FOR DECK BEAM REMOVAL OR ERECTION OPERATIONS.

REVISIONS	
NAME	DATE

ILLINOIS DEPARTMENT OF TRANSPORTATION  
**TRAFFIC CONTROL AND PROTECTION FOR DECK BEAM OPERATIONS**  
I-80 RAMP B AT MARSEILLES ROAD  
SCALE: 1"=50'  
DATE: 11/16/07  
DRAWN BY: KM  
CHECKED BY: SE

