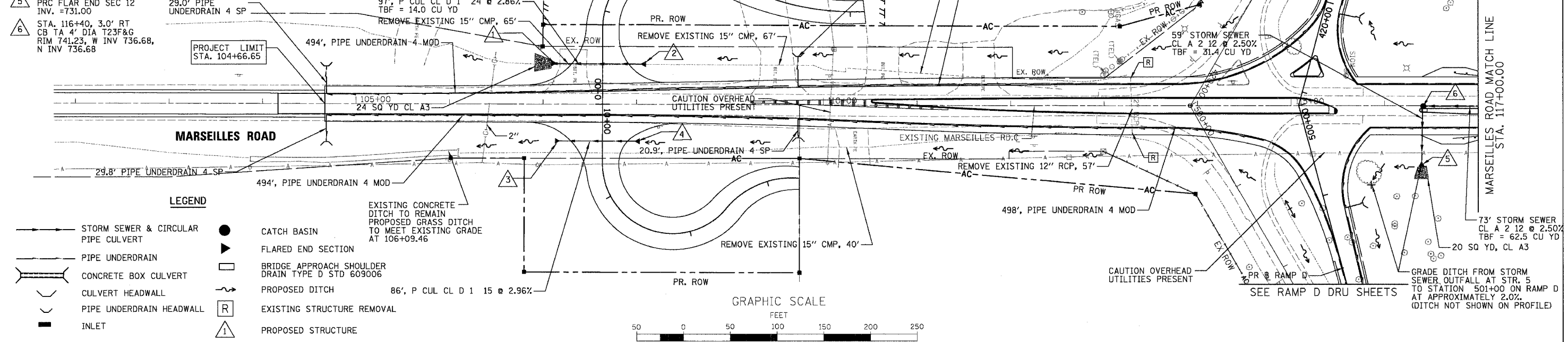


F.A.I. RTE.	SECTION	COUNTY	TOTAL SHEETS	SHEET NO.
80	(50-5) HBK-2	LASALLE	331	92
STA. 105+00.00 TO STA. 117+00.00				
FED. ROAD DIST. NO.		ILLINOIS FED. AID PROJECT		

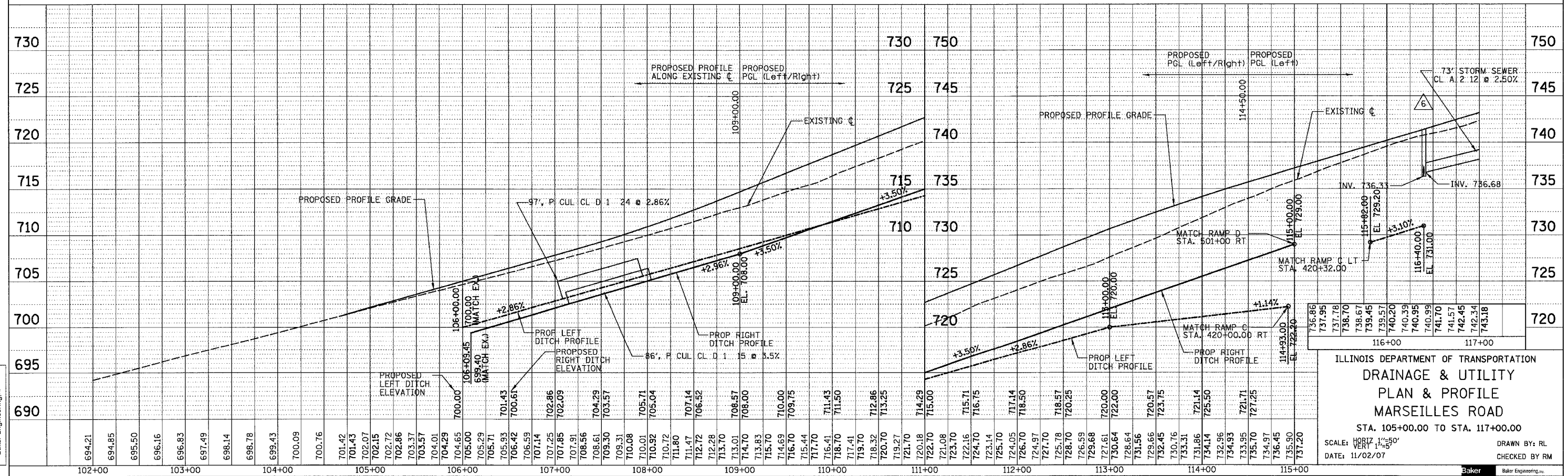
- 1. STA. 107+09, 42.0' LT END SECTIONS 24 INV.=703.12
- 2. STA. 108+10, 42.0' LT END SECTIONS 24 INV.=706.01
- 3. STA. 107+14, 40.0' RT END SECTIONS 15 INV.=702.49
- 4. STA. 108+04, 39.0' RT END SECTIONS 15 INV.=705.15
- 5. STA. 116+40, 65.0' RT PRC FLAR END SEC 12 INV.=731.00
- 6. STA. 116+40, 3.0' RT CB TA 4' DIA T23F&G RIM 741.23, W INV 736.68, N INV 736.68

NOTES:
 1.) STATION AND OFFSETS FOR CATCH BASINS AND INLETS ALONG CURB AND GUTTER ARE GIVEN AT THE EDGE OF PAVEMENT.
 2.) RIM ELEVATIONS ALONG CURB AND GUTTER ARE GIVEN AT EDGE OF PAVEMENT. RIM ELEVATIONS IN GRASS AREAS ARE GIVEN AT THE TOP OF STRUCTURE.
 3.) STATION AND OFFSET OF CULVERT END SECTIONS IS GIVEN AT THE END OF THE STRUCTURE, WHERE STRUCTURE MEETS DITCH FLOW LINE.
 4.) QUANTITY GIVEN FOR PIPE LENGTH FOR CULVERTS AND STORM SEWER DOES NOT COUNT LENGTH OF END SECTION.



DATE	BY	REVISION

DATE	BY	REVISION



ILLINOIS DEPARTMENT OF TRANSPORTATION
**DRAINAGE & UTILITY
 PLAN & PROFILE
 MARSEILLES ROAD**
 STA. 105+00.00 TO STA. 117+00.00
 SCALE: HORIZ 1"=50'
 VERT 1"=5'
 DATE: 11/02/07
 DRAWN BY: RL
 CHECKED BY: RM



h:\107496\3.0 deliverables\3.1 drainage\Design\Sheet\80_DRU01.drw
 11/5/2007