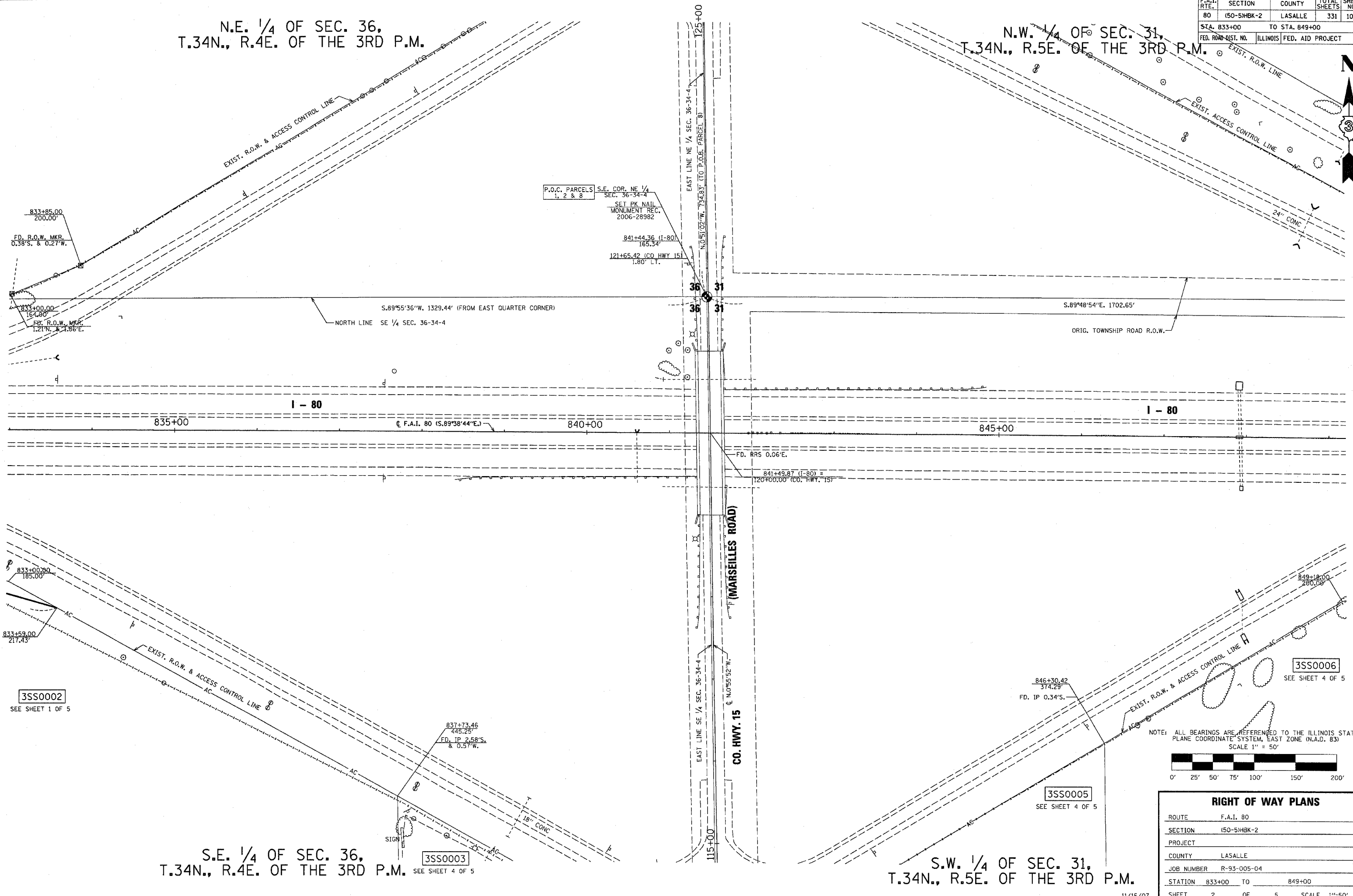


F.A.I. RTE.	SECTION	COUNTY	TOTAL SHEETS	SHEET NO.
80	150-5HMK-2	LASALLE	331	102b
STA. 833+00		TO STA. 849+00		
FED. ROAD-DIST. NO.		ILLINOIS	FED. AID PROJECT	

N.E. 1/4 OF SEC. 36,
T.34N., R.4E. OF THE 3RD P.M.

N.W. 1/4 OF SEC. 31,
T.34N., R.5E. OF THE 3RD P.M.



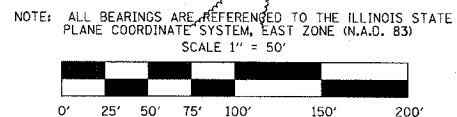
S.E. 1/4 OF SEC. 36,
T.34N., R.4E. OF THE 3RD P.M.

S.W. 1/4 OF SEC. 31,
T.34N., R.5E. OF THE 3RD P.M.

3SS0003
SEE SHEET 4 OF 5

3SS0005
SEE SHEET 4 OF 5

3SS0006
SEE SHEET 4 OF 5



RIGHT OF WAY PLANS	
ROUTE	F.A.I. 80
SECTION	150-5HMK-2
PROJECT	
COUNTY	LASALLE
JOB NUMBER	R-93-005-04
STATION	833+00 TO 849+00
SHEET	2 OF 5 SCALE 1"=50'

Nov 26, 2007 - 11:50:54 AM
c:\projects\9901892\consu\1-80-marrows.dgn