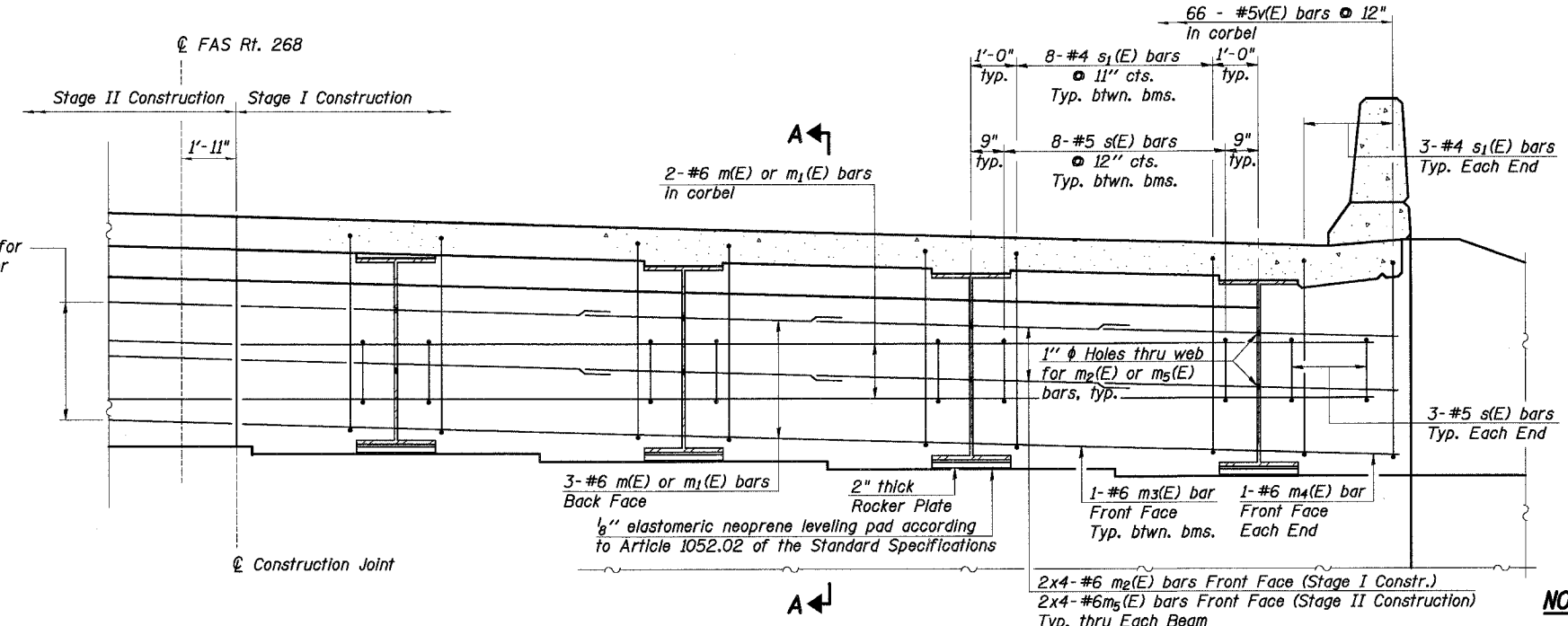


F.A.I. RTE.	SECTION	COUNTY	TOTAL SHEETS	SHEET NO.
80	50-5HBK-2	LASALLE	331	140
STA. 105+00		TO STA. 136+00		
FED. ROAD DIST. NO. 7		ILLINOIS FED. AID PROJECT		
SHEET NO. S12 OF S22				

**ABUTMENT DIAPHRAM  
BILL OF MATERIAL**

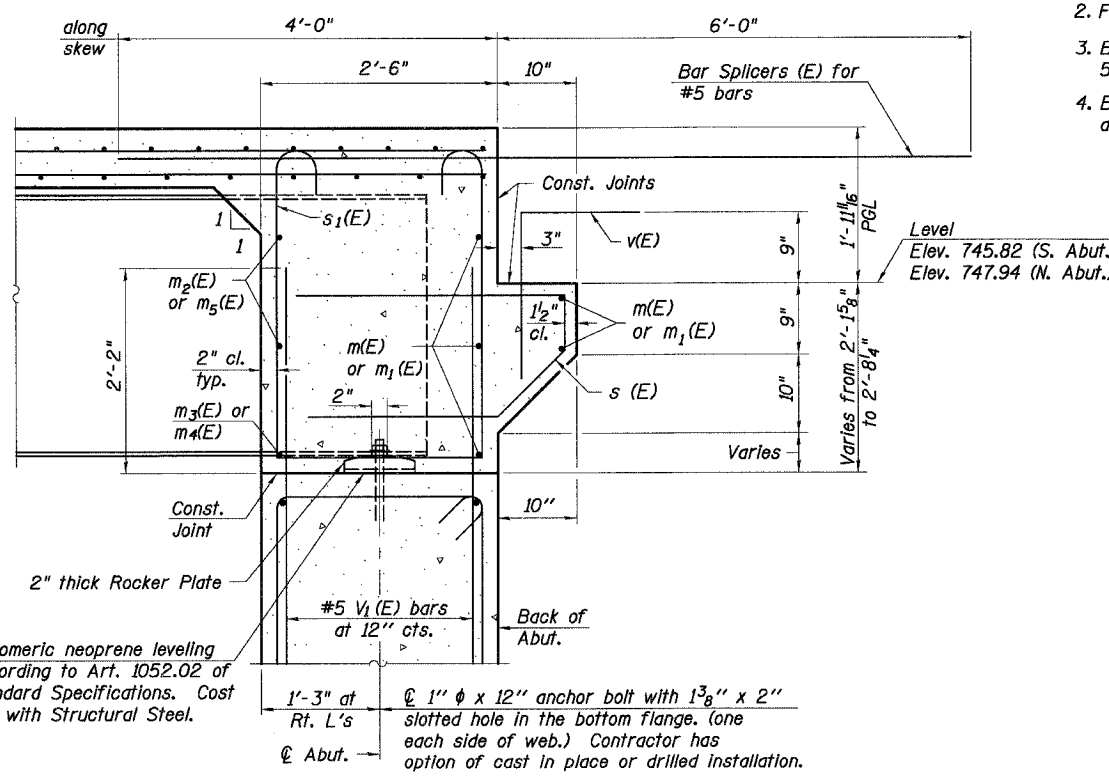
Bar	No.	Size	Length (ft)	Shape
m(E)*	10	# 6	30'-4"	—
m1(E)*	10	# 6	34'-2"	—
m2(E)	16	# 6	9'-9"	—
m3(E)	14	# 6	8'-2"	—
m4(E)	4	# 6	2'-6"	—
m5(E)	16	# 6	10'-9"	—
s(E)	124	# 5	6'-6"	┘
s1(E)	124	# 4	10'-6"	┘
v(E)	132	# 5	3'-2"	┘
Concrete Superstructures		Cu. Yd.	50	
Reinforcement Bars, Epoxy Coated		Pound	3,800	
Bar Splicers		Each	16	

\* m(E) bars are for Stage I Construction.  
m1(E) bars are for Stage II construction.



**DIAPHRAGM ELEVATION AT ABUTMENT**

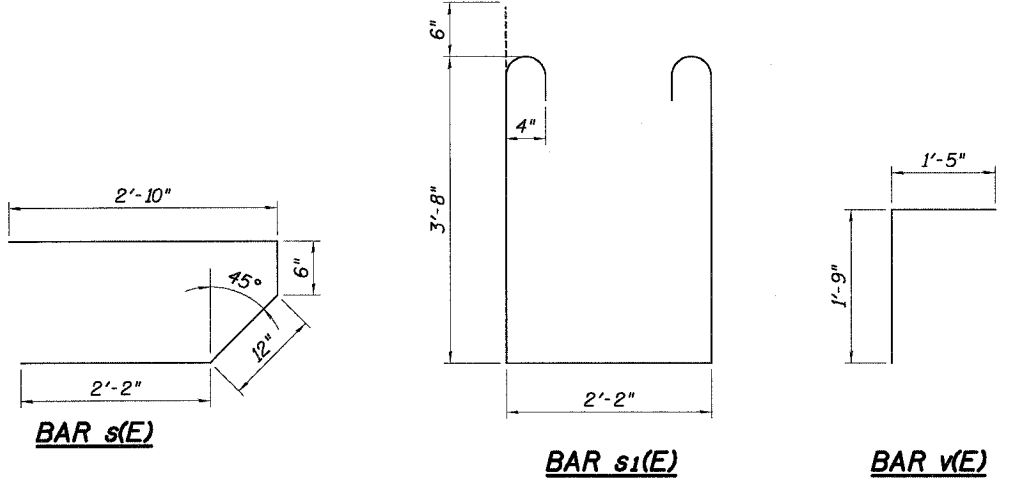
- NOTES:**
- The s(E) and s1(E) bars shall be placed parallel to the beams. Spacing for these bars shall be at right angles to the beams.
  - For anchor bolt details see sheet S15.
  - Bars indicated thus 55 x 7-#5 etc. Indicates 55 lines of bars with 7 lengths per line.
  - Bill of Material contains quantities for both the north and south abutment diaphragms.



**SECTION A-A**

Dimensions at right angles to abutment, except as shown.

**MIN. BAR LAP**  
#6 bar = 2'-9"



REVISIONS	
NAME	DATE

ILLINOIS DEPARTMENT OF TRANSPORTATION  
**INTEGRAL ABUTMENT  
DIAPHRAGM DETAIL**  
MARSEILLES ROAD (FAS Rt. 268)  
OVER I-80 (F.A.I. ROUTE 80)  
STRUCTURE NUMBER 050-0245  
LA SALLE COUNTY SECTION 50-5HBK-2  
STATION 120+00.08 DESIGNED: DM DRAWN: RL  
DATE: 11/02/07 CHECKED: KZ CHECKED: KZ

**Baker**  
Baker Engineering, Inc.