

STATE OF ILLINOIS
 DEPARTMENT OF PUBLIC WORKS AND BUILDINGS
 DIVISION OF HIGHWAYS
**PLANS FOR PROPOSED
 STATE BOND ISSUE HIGHWAY**

BOND ISSUE ROUTE NO.	SEC.	COUNTY	TOTAL SHEETS	SHEET NO.
70-A	109-B & C	La Salle	17	1
FED. ROAD DIST. NO. 7 ILLINOIS FED. AID PROJECT				

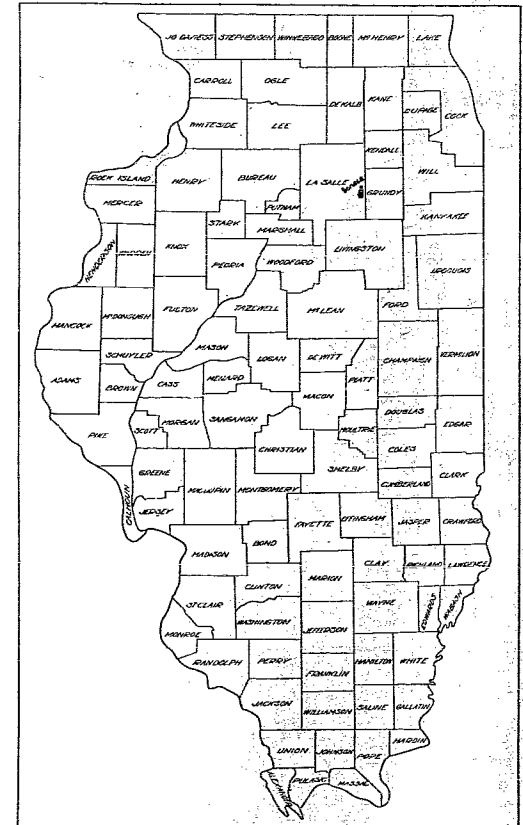
Index to Sheets
 sheet No 1 Title Page
 sheet No 2 Plan & Profile Substructure
 sheet No 3-16 Incl. Special Bridge Design

Part of sheet in sec - 109 P file 6532

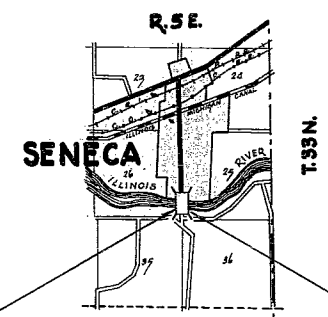
SCALES
 PLAN 1 INCH = 100 FT.
 PROFILE, HOR. 1 INCH = 100 FT.
 PROFILE, VERT. 1 INCH = 10 FT.
 CROSS-SECTIONS 1 INCH = 6 FT.

ROUTE 70-A, SEC. 109-B & C, LA SALLE CO.

1 steel bridge, 1 span @ 262'-10", 3 spans @ 200', and 9 steel beam approach spans @ 60' over Illinois River at Seneca



LOCATION OF SECTION INDICATED THIS: —



Sec. 109-C includes
 steel superstructure 1 span @ 262'-10" and 3 spans @ 200' for bridge at Seneca over Illinois River

Sec. 109-B includes
 R.C. Substructure and 9 steel beam approach spans @ 60' for bridge at Seneca over Illinois River

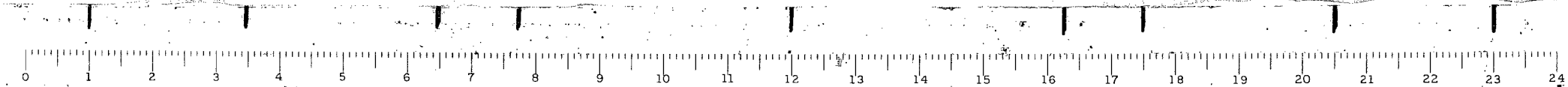
LAYOUT
 Approximate scale 1 inch = 1 mile

- | | | | |
|-----------------------|-------|-----------------------------|-------|
| STATE LINE | ---- | RETAINING WALL | ===== |
| COUNTY LINE | ----- | BASE OR SURVEY LINE | ----- |
| CITY, VILLAGE OR TOWN | ----- | LEVEE | ===== |
| TOWNSHIP LINE | ----- | CULVERT | ----- |
| SECTION LINE | ----- | STORM SEWER | ----- |
| GRANT LINE | ----- | TILE DRAIN | ----- |
| SECTION CORNER | ----- | DROP INLET | ----- |
| FENCE LINE | ----- | TROLLEY POLE | ----- |
| UNFENCED PROPERTY | ----- | POWER POLE | ----- |
| RIGHT OF WAY LINE | ----- | TELEPHONE OR TELEGRAPH POLE | ----- |
| GUARD RAIL | ----- | MARSH | ----- |
| STEAM RAILROAD | ----- | HEDGE | ----- |
| ELECTRIC RAILROAD | ----- | | ----- |

STATE OF ILLINOIS
 DEPARTMENT OF PUBLIC WORKS AND BUILDINGS
 DIVISION OF HIGHWAYS

SUBMITTED: 1932
 EXAMINED: 7/24/32
 PASSED: 7/24/32
 APPROVED: 7/24/32
 APPROVED: 7/24/32

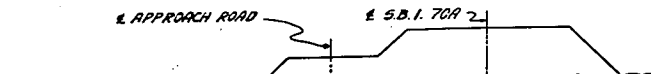
LA SALLE COUNTY SECTION 109-B & C ROUTE 70-A



ROUTE 70A - SEC 109 LASALLE CO.

ROUTE	SEC.	COUNTY	TOTAL SHEETS	SHEET NO.
70A	109	La Salle	11	4
STA. 67+50 TO STA. 98+00				
FED. ROAD DIST. NO. 7 (ILLINOIS) FED. AID PROJECT				

STA. 67+50 IS A POINT IN THE PRESENT ROAD APPROXIMATELY 307 1/2 FT. SOUTH OF THE SOUTH EAST CORNER OF SEC. 23 T33N R5E 3PM.



PI Sta 70+00
L 176'30"
Δ 3'30"
D 1'10"
T 4911.13
L 150.04
L 300.00
E 2.30
S 0.016'/ft

SECTION AT STA 72+00 SHOWING PARALLEL APPROACH ROAD

THE CONTRACTOR SHALL CONSTRUCT A INCH OPEN LATERAL JOINTS IN THE PAVEMENT AT SUCH LOCATIONS AS ARE DESIGNATED BY THE ENGINEER, IN ACCORDANCE WITH STANDARD 470. THE COST OF CONSTRUCTING THESE JOINTS SHALL BE INCLUDED IN THE UNIT PRICE BID FOR PAVEMENT, AND NO EXTRA COMPENSATION WILL BE ALLOWED. THE BITUMINOUS FILLER FOR THE JOINTS SHALL BE FURNISHED AND INSTALLED BY THE DEPARTMENT AT ITS OWN EXPENSE.

LAND ON WHICH BORROW PIT IS TO BE LOCATED SHALL BE FURNISHED TO THE CONTRACTOR WITHOUT CHARGE.

ALL EXISTING STRUCTURES WITHIN THE RIGHT OF WAY, EXCEPT AS NOTED, TO BE REMOVED BY THE CONTRACTOR WITHOUT ADDITIONAL COMPENSATION.

ADDITIONAL COMPENSATION FOR OVERHAUL NOT ALLOWED ON QUANTITIES SHOWN ON PLANS.

NOTE: All notes beyond limits of Bridge which extends from Sta. 72+20.72 to Sta. 87+31.03 refer to Sec. 109; and do not apply to Sec. 109B or 109C

ALL TREES, STUMPS, AND HEDGES WITHIN THE RIGHT OF WAY ARE TO BE REMOVED BY THE CONTRACTOR. THE COST OF REMOVING THESE TREES, STUMPS, AND HEDGES IS TO BE INCLUDED IN THE UNIT PRICE BID FOR EXCAVATION WITH NO ADDITIONAL COMPENSATION FOR CLEARING AND GRUBBING.

ROAD SECTION- 18 FT. PAVEMENT, 34 FT. ROADBED, USED FROM STA. 67+50 TO STA. 98+00.

FOR CONSTRUCTION OF PAVEMENT ADJACENT TO BRIDGE, SEE SPECIAL SHEET.

PROPOSED IMPROVEMENT BEGINS STA. 67+50

W.H. UNDERHILL.

FOR PARALLEL APPROACH ROAD SEE CROSS SECTIONS.

RIGHT OF WAY FOR CONSTRUCTION PURPOSES

SHAID EST. DIEBOLD SEC. 26

SEC. 25

ILLINOIS RIVER

STA. 72+20.72 TO STA. 87+31.03 NOT INCLUDED IN SEC. 109

Sec. 109C Includes: Steel Superstructure 1 span @ 362'-10" and 3 spans @ 200'

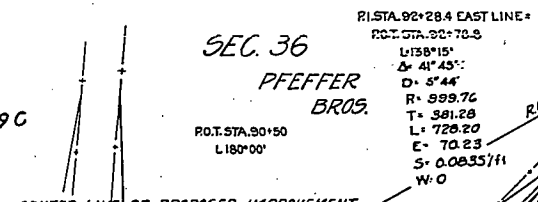
Sec. 109B Includes: R.C. Substructure and 9 steel beam approach spans @ 60'

T33N R5E 3PM

T33N R5E 3PM

SEC. 36

PFEFFER BROS.



PI STA. 90+87.5
L 134'44"

PROPOSED IMPROVEMENT ENDS STA. 98+00

USE GUTTER SECTION, STANDARD 1359, FROM STA. 70+69 TO STA. 72+20 RT. & LT. AND FROM STA. 87+31 TO STA. 98+00 RT. & LT.

TRAFFIC BOUND GRAVEL OR CRUSHED STONE SURFACE COURSE, STANDARD 1335 GRADE NO. 2, 20 FT. WIDE TO BE USED ON PUBLIC SIDE ROADS AT STA. 88+1 RT. & LT. AND ON THE PARALLEL APPROACH ROAD FROM STA. 69+50 TO STA. 73+85. 280 CU YDS. OF GRAVEL INCLUDED IN ESTIMATE.

USE STANDARD 1471 FROM STA. 72+00 TO STA. 72+20 AND FROM STA. 87+31 TO STA. 87+52 AND AT STA. 97+06

750 SQ YDS OF BRICK PAVEMENT REMOVAL, FROM STA. 93+50 TO STA. 98+00, INCLUDED IN ESTIMATE.
200 SQ YDS OF CONCRETE PAVEMENT REMOVAL, FROM STA. 67+50 TO STA. 68+50, INCLUDED IN ESTIMATE.
Height of Abutment 12.5 ft. Skew 1 3/4°
Use Standard 1203, span 18 ft. (length 20 ft) at Sta. 72+20.72
Reinforcement Bars 2#5 @ 18"
Height of Abutment 14.0 ft. Skew 1 3/4°
Use Standard 1203, span 18 ft. (length 20 ft) at Sta. 87+31.03
Reinforcement Bars 2#5 @ 18"

BM#1 5 1/4" Rod 35' Oak 55' Lt. Sta. 69+23
ELEV. 507.16

BM#2 5 1/4" Walnut 123' Lt. Sta. 73+25
ELEV. 507.04

BM#3 5 1/4" W.T.P. 25' Lt. Sta. 84+88
768.56 VC. ELEV. 503.46

BM#4 5 1/4" W 40" Cottonwood 35' RT of Brick pvt. Sta. 87+47
ELEV. 502.91

BM#5 5 1/4" Walnut 50' Rt. Sta. 93+18
ELEV. 502.77

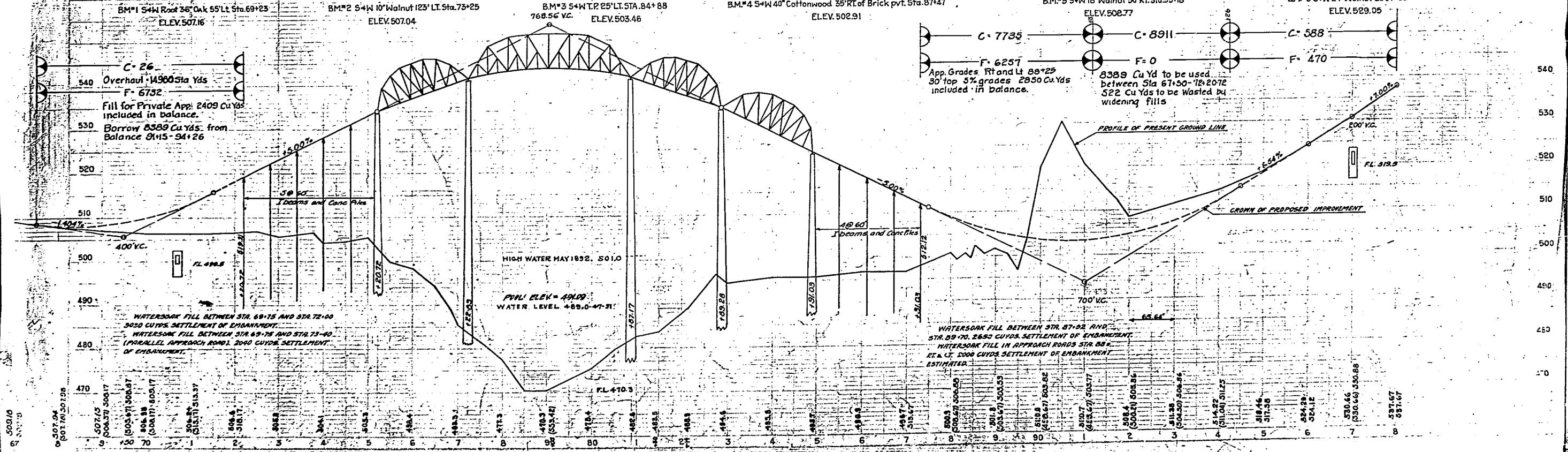
BM#6 5 1/4" Walnut Lt. Sta. 97+35
ELEV. 529.05

C-26
540 Overhaul 14980 Sta Yds
F-6732
Fill for Private App. 2409 Cu Yds included in balance.

530 Borrow 8389 Cu Yds. from Balance 8145-94+26

C-7735
F-6257
App. Grades Rt and Lt 88+25
30' top 5% grades 2850 Cu Yds included in balance.

C-8911
F-0
8389 Cu Yd to be used between Sta 67+50-72+20.72
522 Cu Yds to be Wasted by widening fills



WATERSOAK FILL BETWEEN STA. 69+75 AND STA. 72+00 3050 CU YDS. SETTLEMENT OF EMBANKMENT.
WATERSOAK FILL BETWEEN STA. 69+75 AND STA. 73+40 (PARALLEL APPROACH ROAD) 2040 CU YDS. SETTLEMENT OF EMBANKMENT.

HIGH WATER MAY 1892. 501.0
PVI ELEV = 494.9
WATER LEVEL 489.0-47-31'

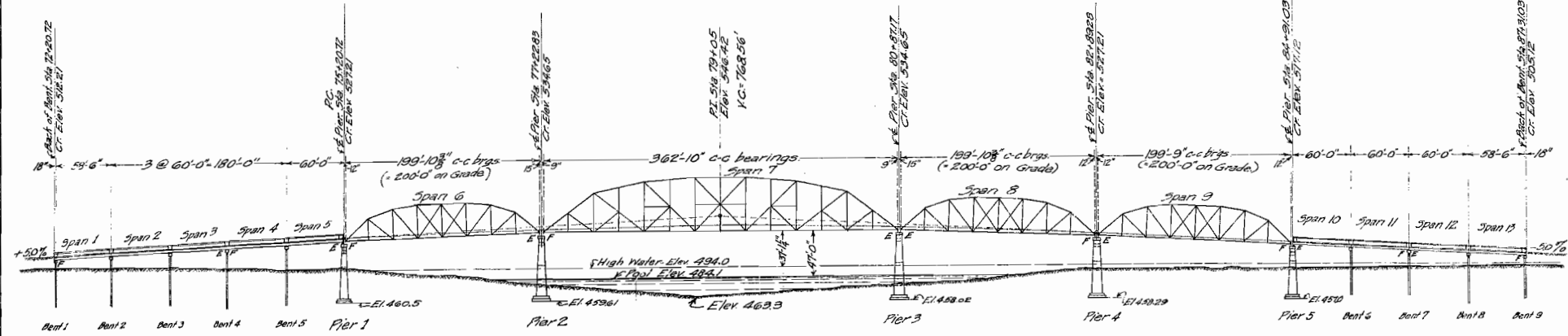
WATERSOAK FILL BETWEEN STA. 87+52 AND STA. 89+70. 2650 CU YDS. SETTLEMENT OF EMBANKMENT.
WATERSOAK FILL IN APPROACH ROADS STA. 88 RT. & LT. 1000 CU YDS. SETTLEMENT OF EMBANKMENT ESTIMATED.

507.04
507.16
507.75
508.37
508.97
509.57
510.17
510.77
511.37
511.97
512.57
513.17
513.77
514.37
514.97
515.57
516.17
516.77
517.37
517.97
518.57
519.17
519.77
520.37
520.97
521.57
522.17
522.77
523.37
523.97
524.57
525.17
525.77
526.37
526.97
527.57
528.17
528.77
529.37
529.97
530.57
531.17
531.77
532.37
532.97
533.57
534.17
534.77
535.37
535.97
536.57
537.17
537.77
538.37
538.97
539.57
540.17
540.77
541.37
541.97
542.57
543.17
543.77
544.37
544.97
545.57
546.17
546.77
547.37
547.97
548.57
549.17
549.77
550.37
550.97
551.57
552.17
552.77
553.37
553.97
554.57
555.17
555.77
556.37
556.97
557.57
558.17
558.77
559.37
559.97
560.57
561.17
561.77
562.37
562.97
563.57
564.17
564.77
565.37
565.97
566.57
567.17
567.77
568.37
568.97
569.57
570.17
570.77
571.37
571.97
572.57
573.17
573.77
574.37
574.97
575.57
576.17
576.77
577.37
577.97
578.57
579.17
579.77
580.37
580.97
581.57
582.17
582.77
583.37
583.97
584.57
585.17
585.77
586.37
586.97
587.57
588.17
588.77
589.37
589.97
590.57
591.17
591.77
592.37
592.97
593.57
594.17
594.77
595.37
595.97
596.57
597.17
597.77
598.37
598.97
599.57
600.17
600.77
601.37
601.97
602.57
603.17
603.77
604.37
604.97
605.57
606.17
606.77
607.37
607.97
608.57
609.17
609.77
610.37
610.97
611.57
612.17
612.77
613.37
613.97
614.57
615.17
615.77
616.37
616.97
617.57
618.17
618.77
619.37
619.97
620.57
621.17
621.77
622.37
622.97
623.57
624.17
624.77
625.37
625.97
626.57
627.17
627.77
628.37
628.97
629.57
630.17
630.77
631.37
631.97
632.57
633.17
633.77
634.37
634.97
635.57
636.17
636.77
637.37
637.97
638.57
639.17
639.77
640.37
640.97
641.57
642.17
642.77
643.37
643.97
644.57
645.17
645.77
646.37
646.97
647.57
648.17
648.77
649.37
649.97
650.57
651.17
651.77
652.37
652.97
653.57
654.17
654.77
655.37
655.97
656.57
657.17
657.77
658.37
658.97
659.57
660.17
660.77
661.37
661.97
662.57
663.17
663.77
664.37
664.97
665.57
666.17
666.77
667.37
667.97
668.57
669.17
669.77
670.37
670.97
671.57
672.17
672.77
673.37
673.97
674.57
675.17
675.77
676.37
676.97
677.57
678.17
678.77
679.37
679.97
680.57
681.17
681.77
682.37
682.97
683.57
684.17
684.77
685.37
685.97
686.57
687.17
687.77
688.37
688.97
689.57
690.17
690.77
691.37
691.97
692.57
693.17
693.77
694.37
694.97
695.57
696.17
696.77
697.37
697.97
698.57
699.17
699.77
700.37
700.97
701.57
702.17
702.77
703.37
703.97
704.57
705.17
705.77
706.37
706.97
707.57
708.17
708.77
709.37
709.97
710.57
711.17
711.77
712.37
712.97
713.57
714.17
714.77
715.37
715.97
716.57
717.17
717.77
718.37
718.97
719.57
720.17
720.77
721.37
721.97
722.57
723.17
723.77
724.37
724.97
725.57
726.17
726.77
727.37
727.97
728.57
729.17
729.77
730.37
730.97
731.57
732.17
732.77
733.37
733.97
734.57
735.17
735.77
736.37
736.97
737.57
738.17
738.77
739.37
739.97
740.57
741.17
741.77
742.37
742.97
743.57
744.17
744.77
745.37
745.97
746.57
747.17
747.77
748.37
748.97
749.57
750.17
750.77
751.37
751.97
752.57
753.17
753.77
754.37
754.97
755.57
756.17
756.77
757.37
757.97
758.57
759.17
759.77
760.37
760.97
761.57
762.17
762.77
763.37
763.97
764.57
765.17
765.77
766.37
766.97
767.57
768.17
768.77
769.37
769.97
770.57
771.17
771.77
772.37
772.97
773.57
774.17
774.77
775.37
775.97
776.57
777.17
777.77
778.37
778.97
779.57
780.17
780.77
781.37
781.97
782.57
783.17
783.77
784.37
784.97
785.57
786.17
786.77
787.37
787.97
788.57
789.17
789.77
790.37
790.97
791.57
792.17
792.77
793.37
793.97
794.57
795.17
795.77
796.37
796.97
797.57
798.17
798.77
799.37
799.97
800.57
801.17
801.77
802.37
802.97
803.57
804.17
804.77
805.37
805.97
806.57
807.17
807.77
808.37
808.97
809.57
810.17
810.77
811.37
811.97
812.57
813.17
813.77
814.37
814.97
815.57
816.17
816.77
817.37
817.97
818.57
819.17
819.77
820.37
820.97
821.57
822.17
822.77
823.37
823.97
824.57
825.17
825.77
826.37
826.97
827.57
828.17
828.77
829.37
829.97
830.57
831.17
831.77
832.37
832.97
833.57
834.17
834.77
835.37
835.97
836.57
837.17
837.77
838.37
838.97
839.57
840.17
840.77
841.37
841.97
842.57
843.17
843.77
844.37
844.97
845.57
846.17
846.77
847.37
847.97
848.57
849.17
849.77
850.37
850.97
851.57
852.17
852.77
853.37
853.97
854.57
855.17
855.77
856.37
856.97
857.57
858.17
858.77
859.37
859.97
860.57
861.17
861.77
862.37
862.97
863.57
864.17
864.77
865.37
865.97
866.57
867.17
867.77
868.37
868.97
869.57
870.17
870.77
871.37
871.97
872.57
873.17
873.77
874.37
874.97
875.57
876.17
876.77
877.37
877.97
878.57
879.17
879.77
880.37
880.97
881.57
882.17
882.77
883.37
883.97
884.57
885.17
885.77
886.37
886.97
887.57
888.17
888.77
889.37
889.97
890.57
891.17
891.77
892.37
892.97
893.57
894.17
894.77
895.37
895.97
896.57
897.17
897.77
898.37
898.97
899.57
900.17
900.77
901.37
901.97
902.57
903.17
903.77
904.37
904.97
905.57
906.17
906.77
907.37
907.97
908.57
909.17
909.77
910.37
910.97
911.57
912.17
912.77
913.37
913.97
914.57
915.17
915.77
916.37
916.97
917.57
918.17
918.77
919.37
919.97
920.57
921.17
921.77
922.37
922.97
923.57
924.17
924.77
925.37
925.97
926.57
927.17
927.77
928.37
928.97
929.57
930.17
930.77
931.37
931.97
932.57
933.17
933.77
934.37
934.97
935.57
936.17
936.77
937.37
937.97
938.57
939.17
939.77
940.37
940.97
941.57
942.17
942.77
943.37
943.97
944.57
945.17
945.77
946.37
946.97
947.57
948.17
948.77
949.37
949.97
950.57
951.17
951.77
952.37
952.97
953.57
954.17
954.77
955.37
955.97
956.57
957.17
957.77
958.37
958.97
959.57
960.17
960.77
961.37
961.97
962.57
963.17
963.77
964.37
964.97
965.57
966.17
966.77
967.37
967.97
968.57
969.17
969.77
970.37
970.97
971.57
972.17
972.77
973.37
973.97
974.57
975.17
975.77
976.37
976.97
977.57
978.17
978.77
979.37
979.97
980.57
981.17
981.77
982.37
982.97
983.57
984.17
984.77
985.37
985.97
986.57
987.17
987.77
988.37
988.97
989.57
990.17
990.77
991.37
991.97
992.57
993.17
993.77
994.37
994.97
995.57
996.17
996.77
997.37
997.97
998.57
999.17
999.77
1000.37
1000.97
1001.57
1002.17
1002.77
1003.37
1003.97
1004.57
1005.17
1005.77
1006.37
1006.97
1007.57
1008.17
1008.77
1009.37
1009.97
1010.57
1011.17
1011.77
1012.37
1012.97
1013.57
1014.17
1014.77
1015.37
1015.97
1016.57
1017.17
1017.77
1018.37
1018.97
1019.57
1020.17
1020.77
1021.37
1021.97
1022.57
1023.17
1023.77
1024.37
1024.97
1025.57
1026.17
1026.77
1027.37
1027.97
1028.57
1029.17
1029.77
1030.37
1030.97
1031.57
1032.17
1032.77
1033.37
1033.97
1034.57
1035.17
1035.77
1036.37
1036.97
1037.57
1038.17
1038.77
1039.37
1039.97
1040.57
1041.17
1041.77
1042.37
1042.97
1043.57
1044.17
1044.77
1045.37
1045.97
1046.57
1047.17
1047.77
1048.37
1048.97
1049.57
1050.17
1050.77
1051.37
1051.97
1052.57
1053.17
1053.77
1054.37
1054.97
1055.57
1056.17
1056.77
1057.37
1057.97
1058.57
1059.17
1059.77
1060.37
1060.97
1061.57
1062.17
1062.77
1063.37
1063.97
1064.57
1065.17
1065.77
1066.37
1066.97
1067.57
1068.17
1068.77
1069.37
1069.97
1070.57
1071.17
1071.77
1072.37
1072.97
1073.57
1074.17
1074.77
1075.37
1075.97
1076.57
1077.17
1077.77
1078.37
1078.97
1079.57
1080.17
1080.77
1081.37
1081.97
1082.57
1083.17
1083.77
1084.37
1084.97
1085.57
1086.17
1086.77
1087.37
1087.97
1088.57
1089.17
1089.77
1090.37
1090.97
1091.57
1092.17
1092.77
1093.37
1093.97
1094.57
1095.17
1095.77
1096.37
1096.97
1097.57
1098.17
1098.77
1099.37
1099.97
1100.57
1101.17
1101.77
1102.37
1102.97
1103.57
1104.17
1104.77
1105.37
1105.97
1106.57
1107.17
1107.77
1108.37
1108.97
1109.57
1110.17
1110.77
1111.37
1111.97
1112.57
1113.17
1113.77
1114.37
1114.97
1115.57
1116.17
1116.77
1117.37
1117.97
1118.57
1119.17
1119.77

STATE OF ILLINOIS
DEPARTMENT OF PUBLIC WORKS & BUILDINGS
DIVISION OF HIGHWAYS

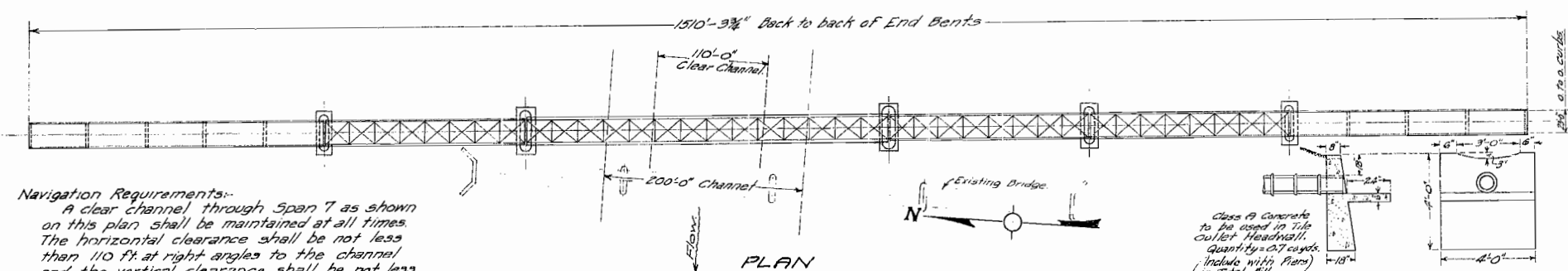
B.M. #2 35-W 10' Walnut 123' Lt. Sta. 73+75 Elev. 500.04
 B.M. #5 35-W 18' Walnut 50' Rt. Sta. 93+18 Elev. 501.77
 All Elevations referred to N.Y. Mean Tide Datum.
 Elev. 484.10 N.Y.M.T. Datum = El. 491.10 State Survey Datum.

ROAD DIST. NO.	SEC.	COUNTY	SHEET NO.	SHEET
70-A	109	La Salle	14	14



GENERAL ELEVATION
Scale 1"=60'

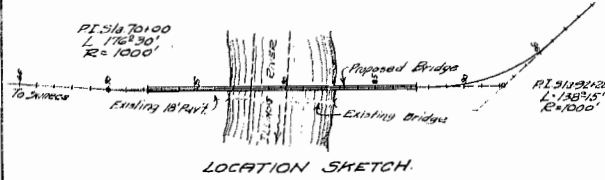
Note:-
Results of Foundation Borings may be seen at the office of the Division of Highways in Springfield, Illinois.



Navigation Requirements-
A clear channel through Span 7 as shown on this plan shall be maintained at all times. The horizontal clearance shall be not less than 110 ft. at right angles to the channel and the vertical clearance shall be not less than 47 ft. above Pool Elevation. The Contractors for Sections B & C will not be permitted to place falsework or any any other obstruction within these limits.

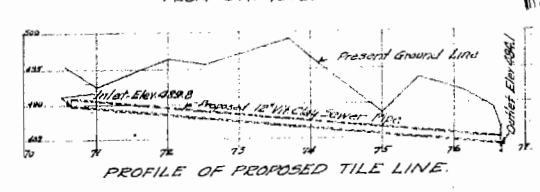
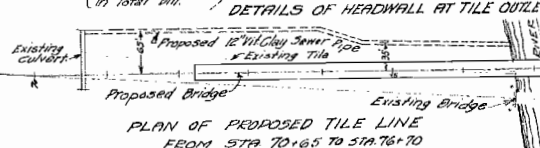
TOTAL BILL OF MATERIAL

Item	Super	Piers	Bents	Total
Class A Concrete - Cu.Yds		3161.9		3161.9
Class X Concrete - Cu.Yds	524.3			524.3
Reinforcing Steel - Lbs	91520	47320		138840
Structural Steel - Lbs	457050			457050
Reinforced Concrete Piles-Lin.Ft			2350	2350
Vitrified Clay Sewer Pipe-Lin.Ft			605	605
Rock Excavation - Cu.Yds				430
Class X Concrete - Cu.Yds	513.5			513.5
Reinforcing Steel - Lbs	144550			144550
Structural Steel - Lbs	1965310			1965310
Iron Castings - Lbs	9720			9720
Steel Castings - Lbs	35140			35140
Name Plates	2			2
Removal of Old Bridge				1



COMPUTED - RBM
CHECKED - RBM
DRAWN - RBM
CHECKED - RBM
ASSEMBLED - RBM
CHECKED - RBM

EXAMINED - A-27-1032
BRIDGE ENGINEER
APPROVED - [Signature]
CHIEF ENGINEER



GENERAL LAYOUT & QUANTITIES
ILLINOIS RIVER BRIDGE
SENECA, ILLINOIS
S.B.I. ROUTE 70 A-SEC. 109
LASALLE COUNTY

DISTRICT ROUTE NO.	SEC.	COUNTY	TOTAL SHEETS	SHEET NO.
70-A	109-C	La. Salle	17	4

2

SHEET 4B

THE NOTES ON THIS SHEET
APPLY TO SHEET 4A--
THIS SHEET WAS AN
OVERLAY FOR STANDARD 1485

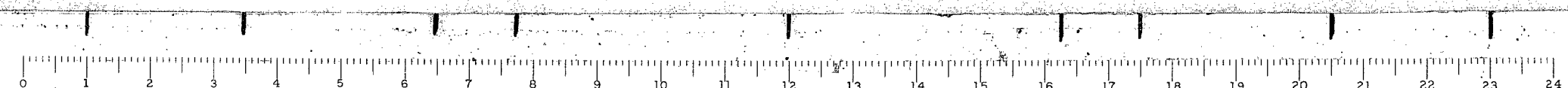
Note--
Spans 6 & 8 shown.
Span 9 similar, except
for variation of Lower
Chord due to Grade Line
as shown on Sheet No. 4.

4-27-32
H. F. Beach
The Engineer
Frank T. White

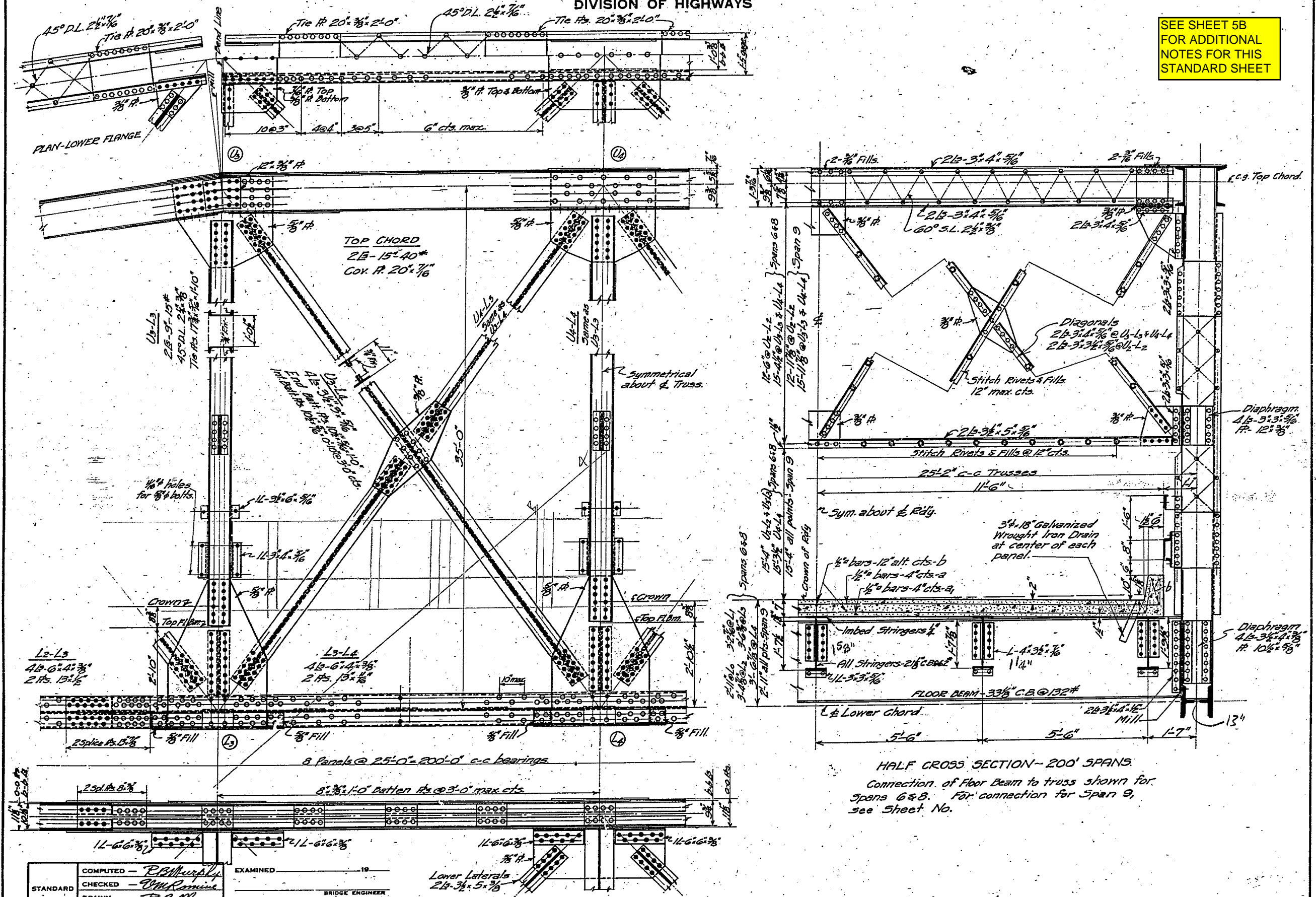
R.B.M.
C.M.R.

SPANS 6-8 & 9--SHEET 1 OF 3
ILLINOIS RIVER BRIDGE
SENECA, ILLINOIS
S.B.I. ROUTE 70A-SEC. 109 C
LASALLE COUNTY

1485-1 of 2



SEE SHEET 5B FOR ADDITIONAL NOTES FOR THIS STANDARD SHEET



STANDARD	COMPUTED - <i>R.B. Murphy</i>	EXAMINED - _____	19
	CHECKED - <i>W.M. Ramsey</i>	BRIDGE ENGINEER	
	DRAWN - <i>R.B.M.</i>	PASSED	
	CHECKED - <i>D.M.R.</i>	ENGINEER OF DESIGN	
SPECIAL	ASSEMBLED - _____	APPROVED	
	CHECKED - _____	CHIEF HIGHWAY ENGINEER	

ROAD ISSUE ROUTE NO.	SEC.	COUNTY	TOTAL SHEETS	SHEET NO.
70-A	109-C	La Salle	17	5

SHEET 5B

THE NOTES ON THIS SHEET
APPLY TO SHEET 5A--
THIS SHEET WAS AN
OVERLAY FOR STANDARD 1485

*Note--
For Installation
of Belts in East
Curb For Telephone
Cables, see Sheet
No. 14*

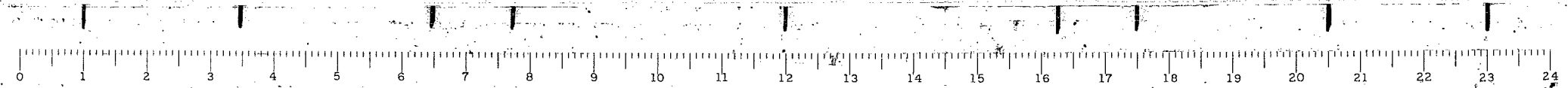
REM.
C.M.R.

4-27-32
R.F. Burch
The Engineer
Contract Sheet

*Note:-
Spans 6 & 8 shown
Span 9 similar except for
variation of Lower Chord due
to Grade Line as shown on Sheet 4*

SPANS 6-8 & 9-SHEET 2 OF 3
ILLINOIS RIVER BRIDGE
SENECA, ILLINOIS
S.B.I. ROUTE 70A-SEC. 109 C
LASALLE COUNTY

1485-2 of 4



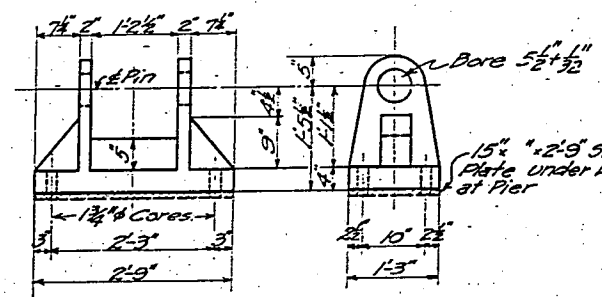


Anchor Bolts
1 1/2" x 2'-6"

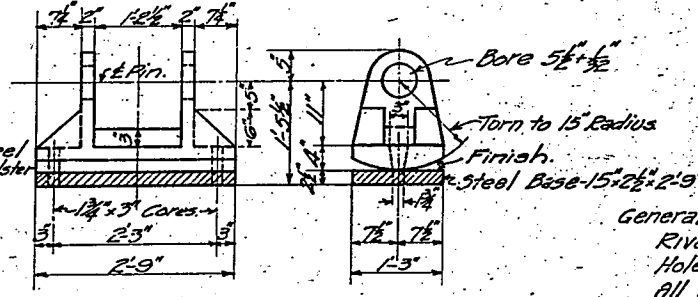
BILL OF MATERIAL

Bar	No.	Size	Length
a		1/2" dia	24'-6"
a1		1/2" dia	24'-3"
b		1/2" dia	20'-6"
Concrete			-ccks
Reinforcing Steel			-lbs.
Structural Steel			-lbs.
Cast Iron Rockers & Bolsters			-lbs.

SEE SHEET 6B
FOR ADDITIONAL
NOTES FOR THIS
STANDARD SHEET



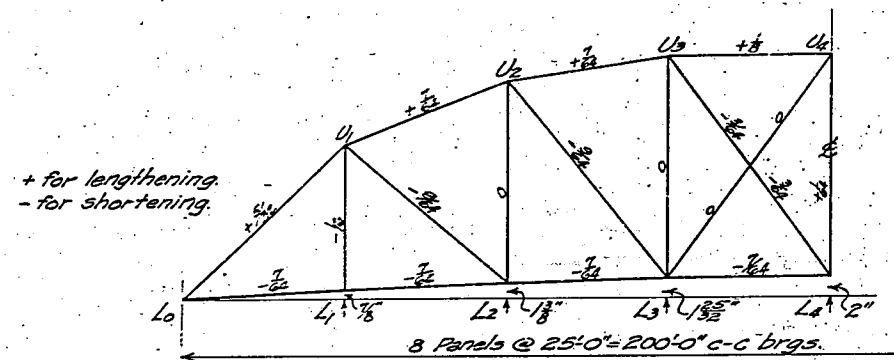
CAST IRON BOLSTER - REQ'D.



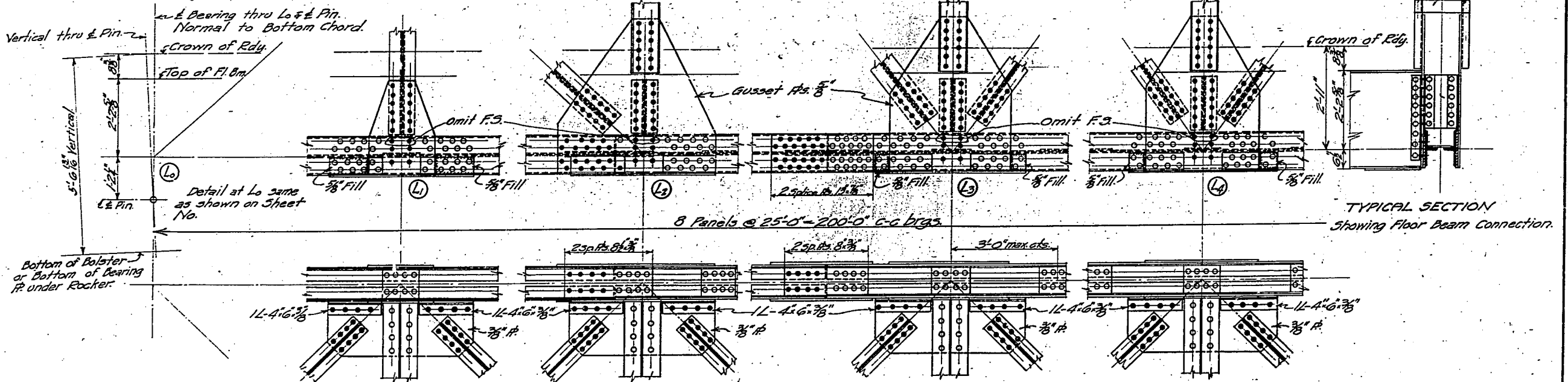
CAST IRON ROCKER - REQ'D.

General Notes:-
Rivets 7/8" unless noted.
Holes punched 1/8" except as noted and except as follows.
All main truss connections, both shop & field shall be subpunched 1/8" & reamed to 1/8" with members assembled.
Holes for lateral, sway bracing, portal and stringer connections may be punched full size.

Each truss shall be assembled complete for reaming.
Field connections shall be match-marked while assembled.
Floor beam connections shall be reamed to a hardened steel templet one inch thick.
Holes may be punched full size for building up members and in rail connections.
Inspection by Illinois Division of Highways before painting.
Paint furnished by Illinois Division of Highways, one shop coat of Blue Lead Paint.
Class X concrete shall be used throughout.
Concrete floor shall be finished according to art. 45.3(e) of Specifications.



CAMBER DIAGRAM - 200' SPAN.
Showing in inches amount members are to be lengthened or shortened for deflection due to Dead Load + Full Live Load.



TYPICAL SECTION
Showing Floor Beam Connection.

COMPUTED	— R.C. Murphy	EXAMINED	— 19
STANDARD	CHECKED — M. Romine		
	DRAWN — R.M.M.	PASSED	BRIDGE ENGINEER
	CHECKED — M.M.R.		
SPECIAL	ASSEMBLED —	APPROVED	ENGINEER OF DESIGN
	CHECKED —		CHIEF HIGHWAY ENGINEER

DETAIL OF LOWER CHORD - SPAN 9
Details not shown same as for other 200' spans on sheets

ROAD DISTRICT	SEC.	COUNTY	TOTAL SHEETS	SHEET NO.
70-A	109-C	La Salle	11	6

4
14
SHEET 6B

SPANS 6-8 & 9

1794
1794
696

3202
90020
1000270
9720

**THE NOTES ON THIS SHEET
APPLY TO SHEET 6A--
THIS SHEET WAS AN
OVERLAY FOR STANDARD 1485**

1/4
4 only.

6

6

2

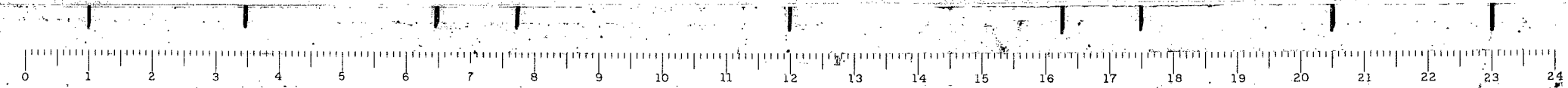
RAM
DMR

4-27-32
H. F. Bunch
W. S. ...
Frank T. ...

243

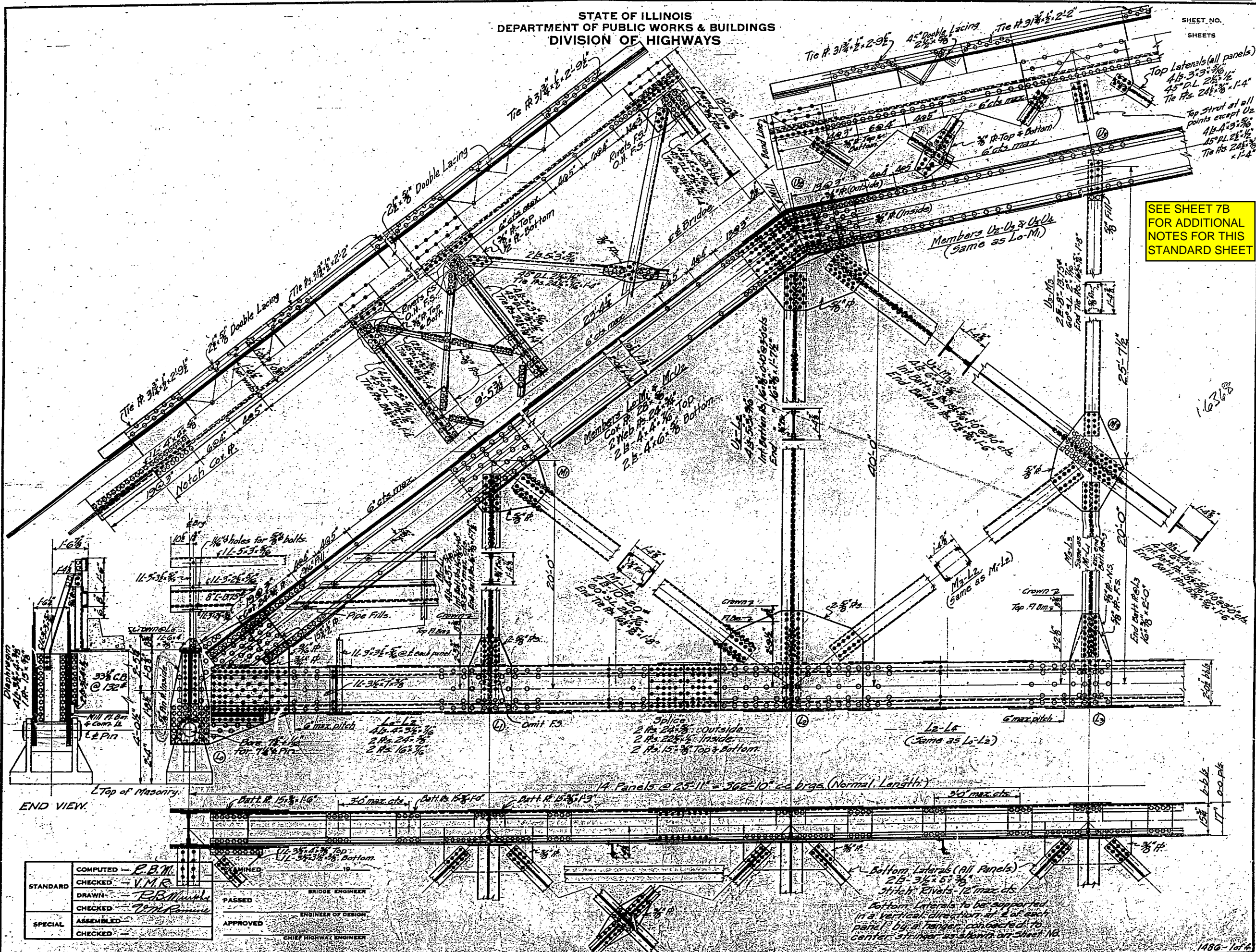
SPANS 688,9 - SHEET 3 OF 3
ILLINOIS RIVER BRIDGE
SENECA, ILLINOIS
S.B.I. ROUTE 70A-SEC.109 C
LASALLE COUNTY

1485 - 3 of 4



STATE OF ILLINOIS
DEPARTMENT OF PUBLIC WORKS & BUILDINGS
DIVISION OF HIGHWAYS

SHEET NO.
SHEETS



SEE SHEET 7B
FOR ADDITIONAL
NOTES FOR THIS
STANDARD SHEET

STANDARD	COMPUTED — P.B.M.	DESIGNED — P.B.M.	BRIDGE ENGINEER
	CHECKED — V.M.R.		
SPECIAL	DRAWN — P.B.M.	PASSED — V.M.R.	APPROVED —
	CHECKED — V.M.R.		

ROAD NAME ROUTE NO.	SEC.	COUNTY	TOTAL SHEETS	SHEET NO.
70-A	109-C	La Salle	17	7

5

SHEET 7B

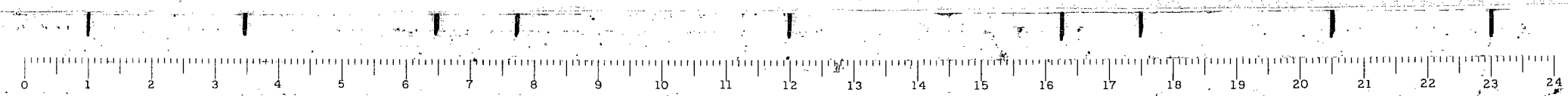
THE NOTES ON THIS SHEET
APPLY TO SHEET 7A--
THIS SHEET WAS AN
OVERLAY FOR STANDARD 1486

R.B.M.
C.M.R.

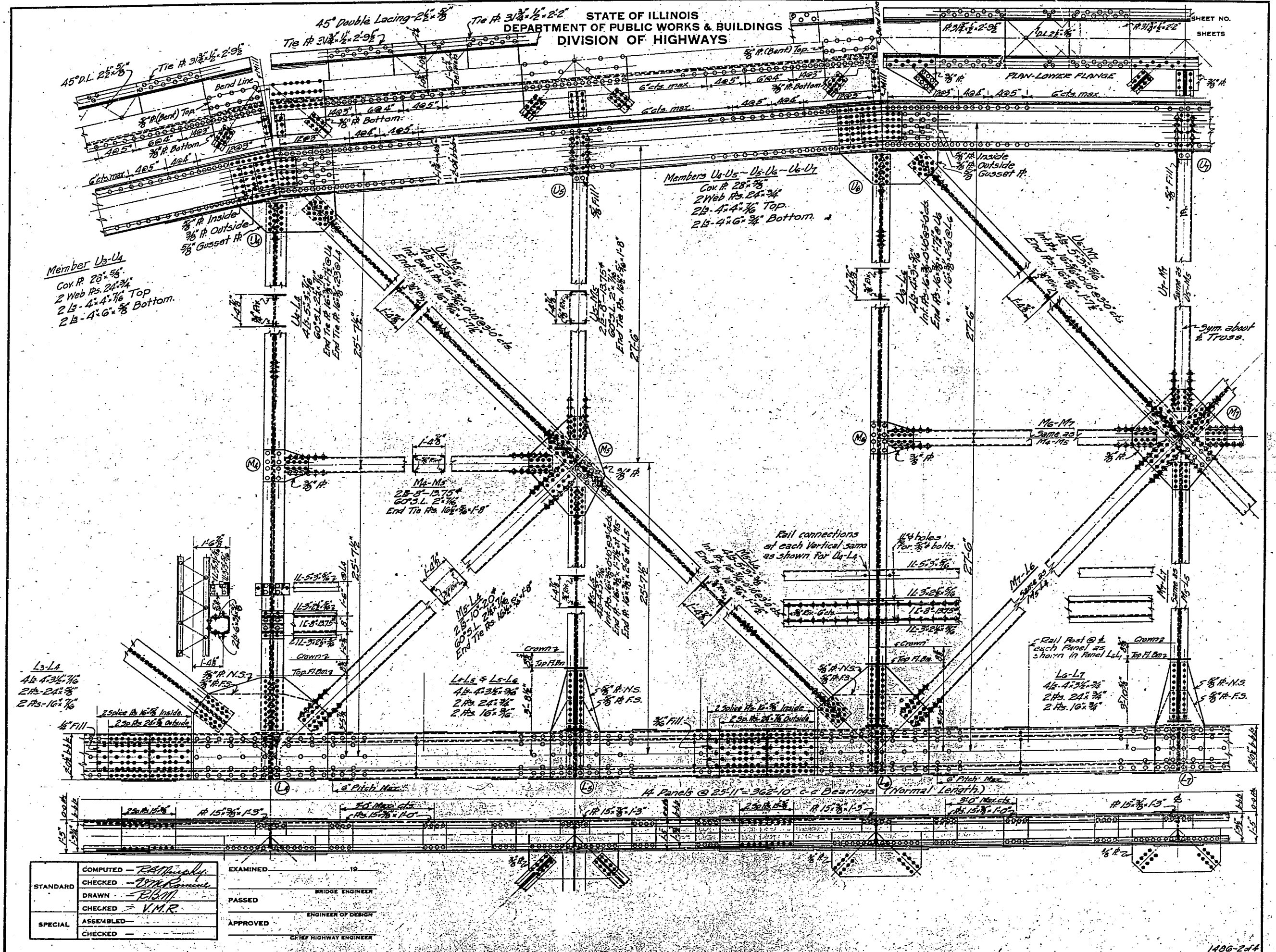
4-27-32
H. F. Bunch
W. J. Johnson
Frank T. Chert

SPAN 7-SHEET 1 OF 3
ILLINOIS RIVER BRIDGE
SENECA, ILLINOIS
SBI. ROUTE 70A-SEC. 109 C
LASALLE COUNTY

1486-109A



STATE OF ILLINOIS
DEPARTMENT OF PUBLIC WORKS & BUILDINGS
DIVISION OF HIGHWAYS



STANDARD	COMPUTED - <i>R.M. Ramey</i>	EXAMINED - 19
	CHECKED - <i>V.M.R.</i>	BRIDGE ENGINEER
	DRAWN - <i>R.B.M.</i>	PASSED
SPECIAL	CHECKED - <i>V.M.R.</i>	ENGINEER OF DESIGN
	ASSEMBLED -	APPROVED
	CHECKED -	CHIEF HIGHWAY ENGINEER

BOND ISSUE ROUTE NO.	SEC.	COUNTY	TOTAL SHEETS	SHEET NO.
70-A	109-C	La Salle	19	8

6

SHEET 8B

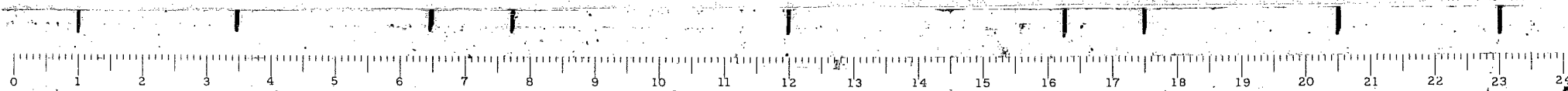
THE NOTES ON THIS SHEET
 APPLY TO SHEET 8A--
 THIS SHEET WAS AN
 OVERLAY FOR STANDARD 1486

RBM.
 C.M.R.

4-27-32
 J. J. Busch
 W. J. Jensen
 Frank Roberts

SPAN 7- SHEET 2 OF 3
 ILLINOIS RIVER BRIDGE
 SENeca, ILLINOIS
 S.B.I. ROUTE 70A- SEC. 109- C
 LASALLE COUNTY

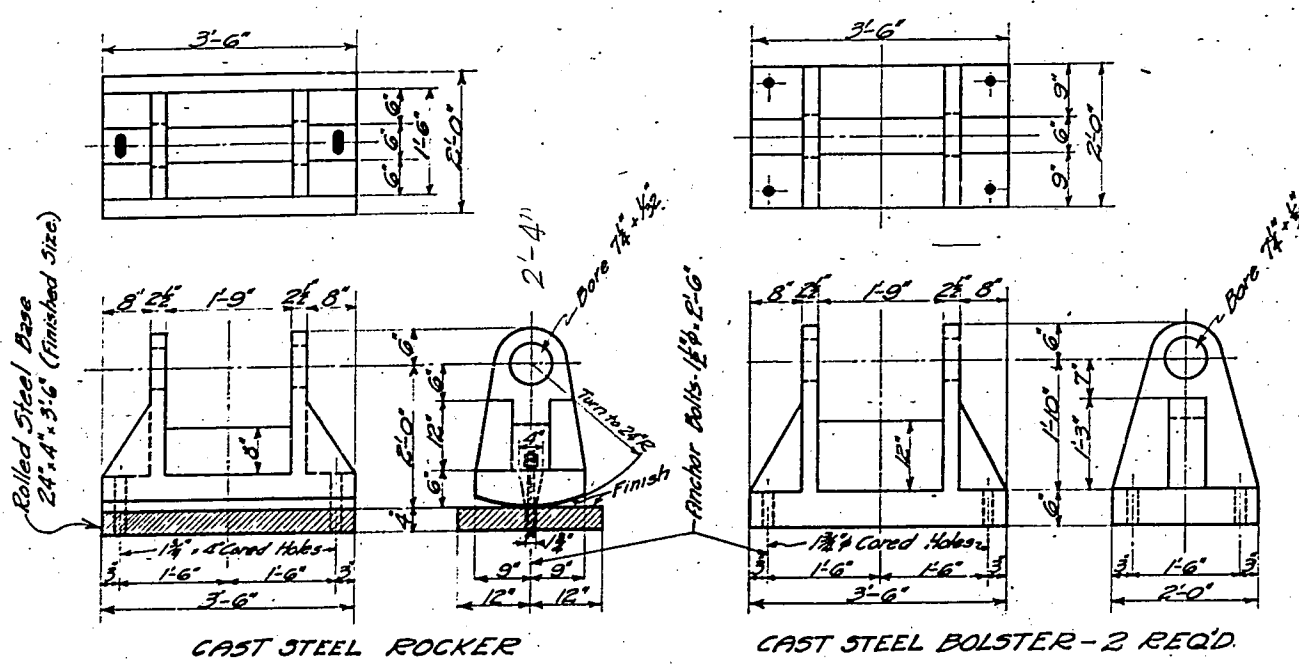
1486-2 of 4



STATE OF ILLINOIS
DEPARTMENT OF PUBLIC WORKS & BUILDINGS
DIVISION OF HIGHWAYS

SHEET NO.
SHEETS

SEE SHEET 9B
FOR ADDITIONAL
NOTES FOR THIS
STANDARD SHEET

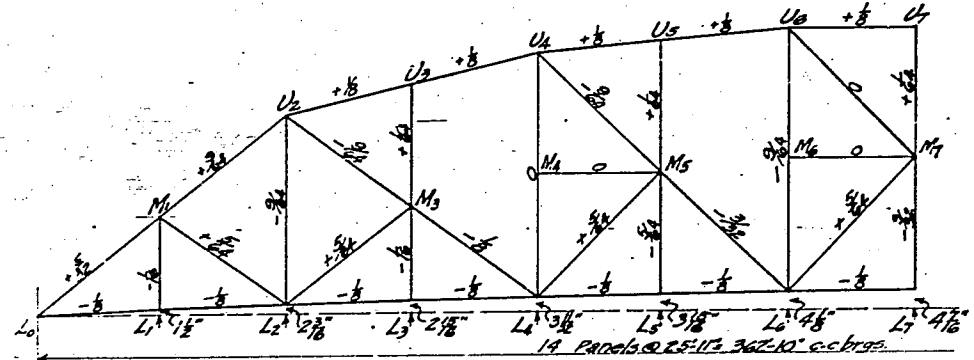


CAST STEEL ROCKER
2 REQ'D.

CAST STEEL BOLSTER - 2 REQ'D

SPAN 7 - BILL OF MATERIAL

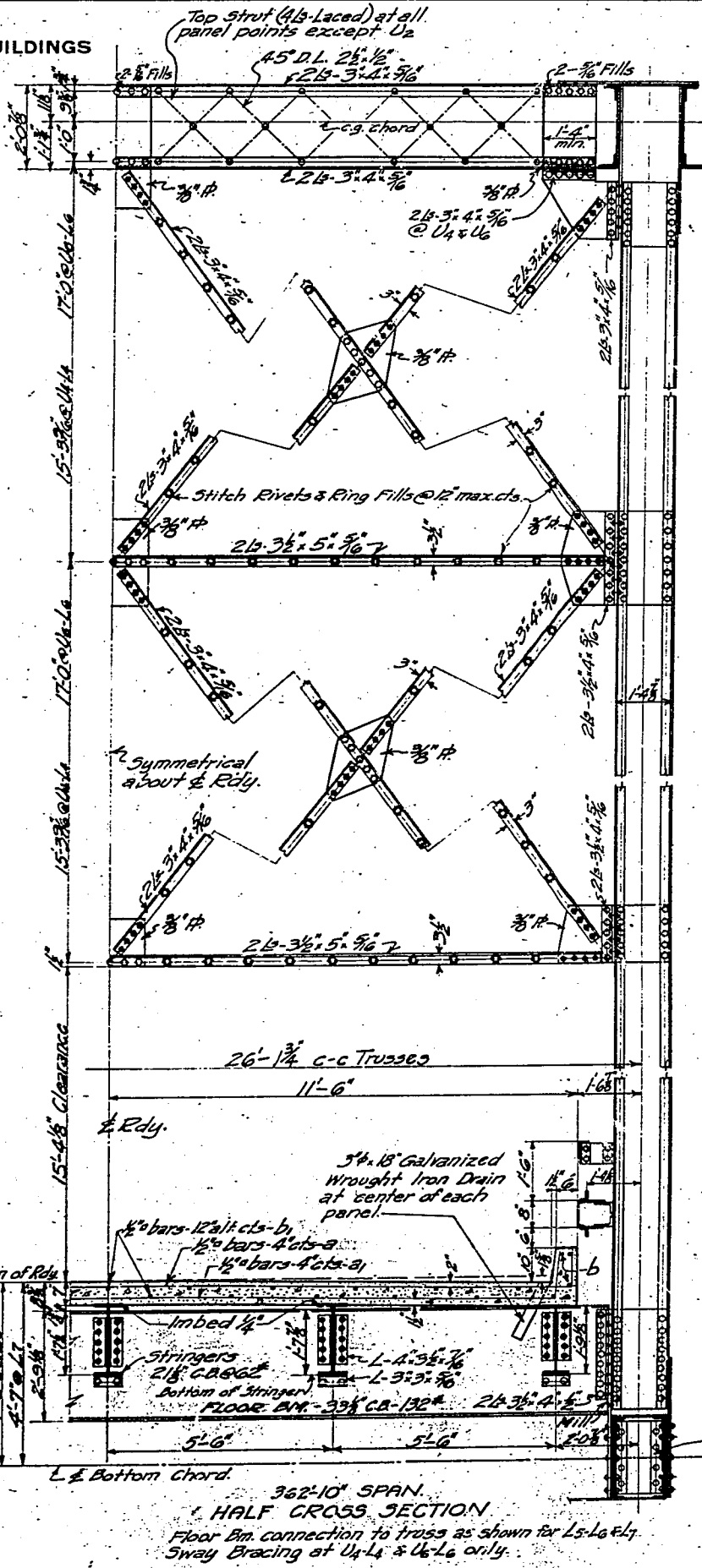
Bar No.	Size	Length
a	1087	1/2" 24'-6"
a1	1087	1/2" 24'-3"
b	406	1/2" 27'-6"
Concrete		- Cu. Yds. 193.3
Reinforcing Steel		Lbs. 54,550
Structural Steel		Lbs. 96,500
C.S. Rockers & Bolsters		Lbs. 10,090



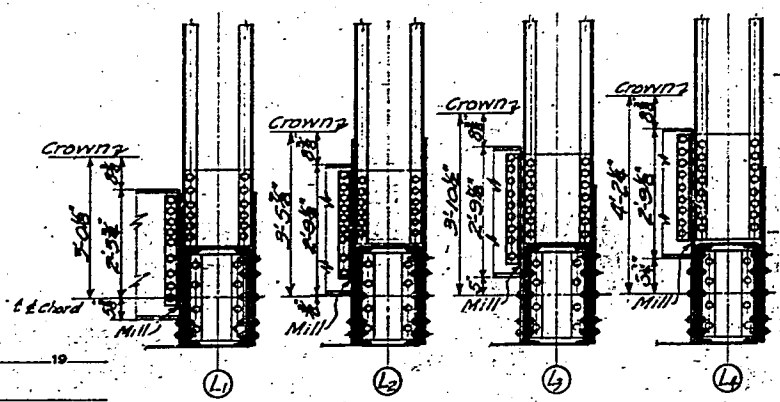
CAMBER DIAGRAM

Showing in inches amount members are to be lengthened or shortened to make bottom chord horizontal and verticals perpendicular to bottom chord under Dead Load + Full Live Load without impact.
+ For lengthening
- For shortening.

For General Notes, see Sheet No.



362'-10" SPAN
HALF CROSS SECTION
Floor Bm. connection to truss as shown for Ls-L6 etc.
Sway Bracing at U4-L4 & U6-L6 only.



DETAIL OF FLOOR BM. CONNECTIONS AT L1-L2-L3 & L4

STANDARD	COMPUTED - RBM	EXAMINED - 19
	CHECKED - RBM	BRIDGE ENGINEER
	DRAWN - RBM	PASSED
	CHECKED - V.M.R.	ENGINEER OF DESIGN
SPECIAL	ASSEMBLED -	APPROVED
	CHECKED -	CHIEF HIGHWAY ENGINEER

ROAD DISTRICT	SEC.	COUNTY	TOTAL SHEETS	SHEET NO.
70-A	109-C	La Salle	17	9

7

14

SHEET 9B

THE NOTES ON THIS SHEET
APPLY TO SHEET 9A--
THIS SHEET WAS AN
OVERLAY FOR STANDARD 1486

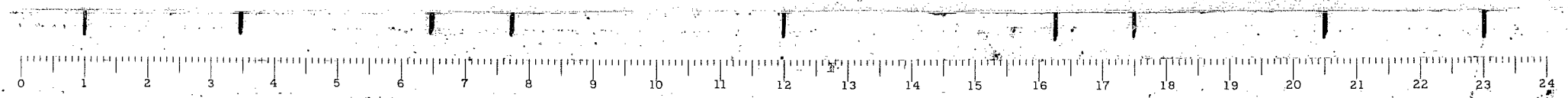
Note:-
For installation of
bolts in East curb for
Telephone Cables, see Sheet
No. 14

4-27-32
H. F. Burch
M. J. Johnson
Frank T. Sheets

R.B.M.
CHK.

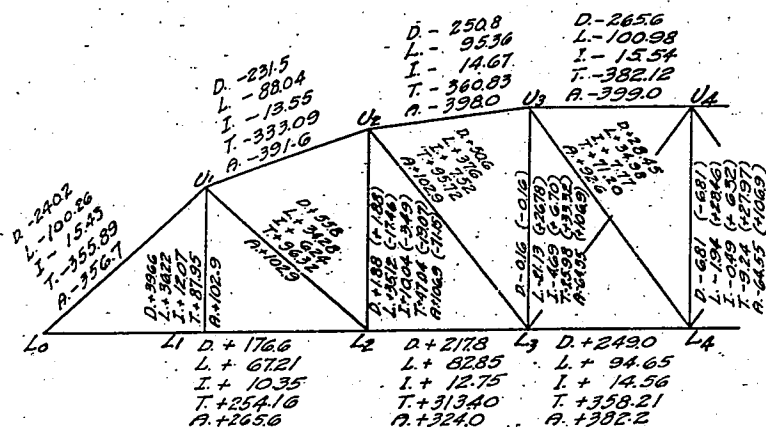
SPAN 7-SHEET 3 OF 3
ILLINOIS RIVER BRIDGE
SENECA, ILLINOIS
S.B.I. ROUTE 70A- SEC. 109 C
LASALLE COUNTY

1486-3 of 4

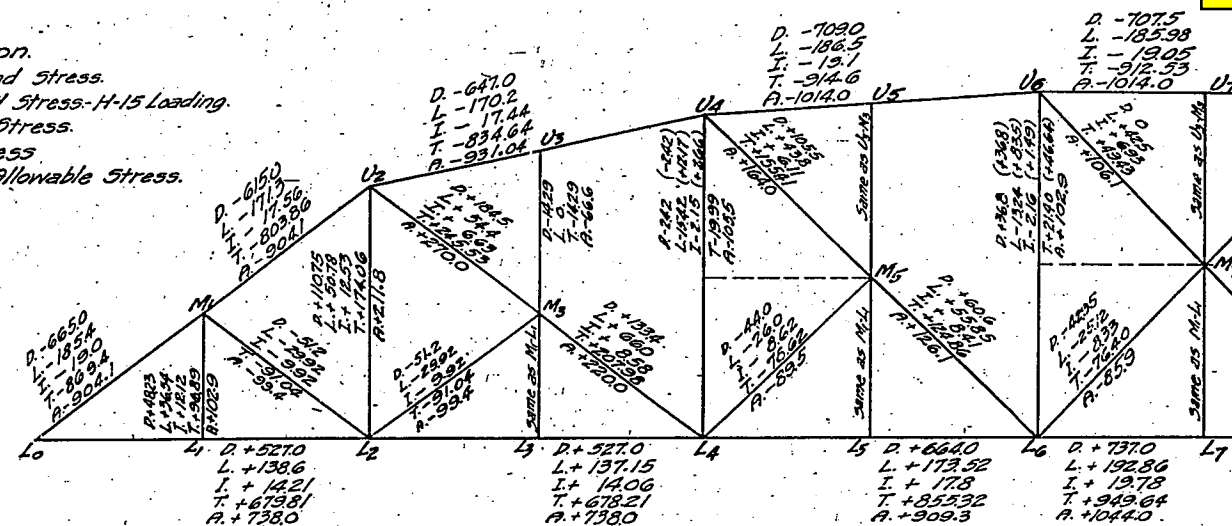


SEE SHEET 10B
FOR ADDITIONAL
NOTES FOR THIS
STANDARD SHEET

Notation.
D - Dead Load Stress.
L - Live Load Stress - H-15 Loading.
I - Impact Stress.
T - Total Stress
A - Maximum Allowable Stress.



STRESS DIAGRAM - 200'-0" SPAN
Stresses in thousands of pounds.



STRESS DIAGRAM - 362'-10" SPAN
Stresses in thousands of pounds.

ALLOWABLE UNIT STRESSES.

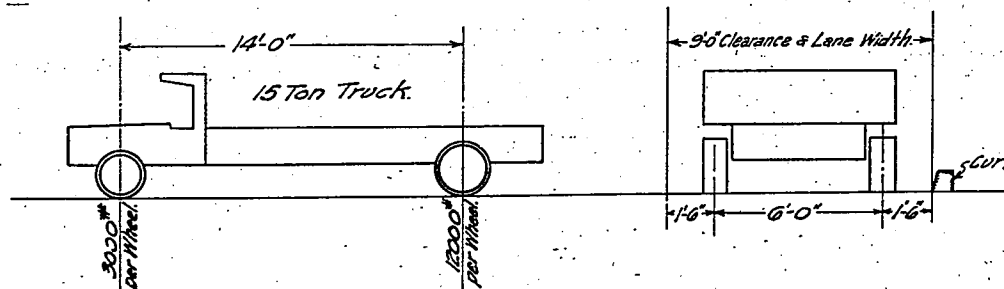
- Tension - 16000 $\frac{lb}{sq. in.}$
- Compression - 16000-70 $\frac{lb}{sq. in.}$ but not to exceed 14000 $\frac{lb}{sq. in.}$
- Bending - 16000 $\frac{lb}{sq. in.}$ on extreme fiber of built-up or rolled sections.
- 24000 $\frac{lb}{sq. in.}$ " " " " pins.
- Shearing - 12000 $\frac{lb}{sq. in.}$ on shop rivets & pins.
- 10000 $\frac{lb}{sq. in.}$ " field " & bolts.
- Bearing - 24000 $\frac{lb}{sq. in.}$ " shop " & pins.
- 20000 $\frac{lb}{sq. in.}$ " field " & bolts.

362'-10" SPAN

	Stringers		Int. Floor Beams.		End Floor Beams.	
	Moment	End Shear	Moment	End Shear	Moment	End Shear
Dead Load	44000*	6790*	235470*	35970*	132720*	20240*
Live Load	34500	16345	231600	30600	233600	30900
Impact	31300	5410	76600	10130	77300	10230
Total	169800*	28545*	543670*	76700*	443620*	61370*

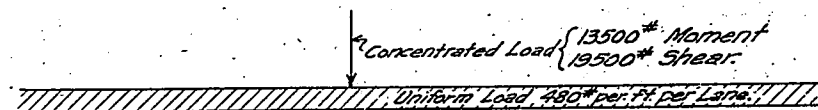
200'-0" SPAN

	Stringers		Int. Fl. Bms.		End Fl. Bms.	
	Moment	End Shear	Moment	End Shear	Moment	End Shear
Dead Load	40920*	6560*	207780*	34638*	117680*	19580*
Live Load	91600	16270	215300	30620	217200	30900
Impact	30530	5420	71770	10207	72400	10300
Total	163050*	28250*	494850*	75465*	407280*	60780*



H-15 TRUCK LOADING FOR STRINGERS & FLOOR BEAMS.

For Floor Beams - Two Trucks passing.
For Stringers - $\frac{5.5}{4.5} = 1.223$ Wheel Loads to each stringer.
Impact Coeff. = $\frac{50}{L+25}$ where L = Loaded span length in feet.



H-15 LANE LOADING FOR DESIGN OF TRUSSES.

Impact Coeff. = $\frac{50}{L+25}$

Note: - All Live Loads to be so placed as to give maximum stress in member considered.

STANDARD	COMPUTED - <i>R.M. Murphy</i>	EXAMINED - _____ 19 _____
	CHECKED - <i>V.M. Romaine</i>	
	DRAWN - <i>R.M.</i>	BRIDGE ENGINEER
	CHECKED - <i>W.M.</i>	PASSED
SPECIAL	ASSEMBLED - _____	ENGINEER OF DESIGN
	CHECKED - _____	APPROVED
		CHIEF HIGHWAY ENGINEER

ROAD DISTRICT	SEC.	COUNTY	TOTAL SHEETS	SHEET NO.
70-A	109-C	La Salle	17	10

8
14

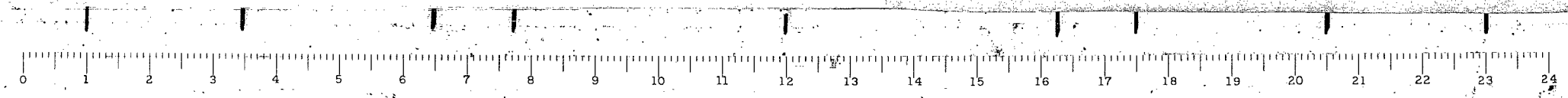
SHEET 10B

THE NOTES ON THIS SHEET
APPLY TO SHEETS 10A--
THIS SHEET WAS AN OVERLAY
FOR STANDARDS 1485 & 1486

4-27-32
H. F. Burch
W. J. Johnson
Frank T. [unclear]
R.M.
J.M.K.

STRESS SHEET
ILLINOIS RIVER BRIDGE
SENECA, ILLINOIS
S.B.I. ROUTE 70A - SEC. 109 C
LASALLE COUNTY

1485 - 4 of 4
1486 - 2 of 4

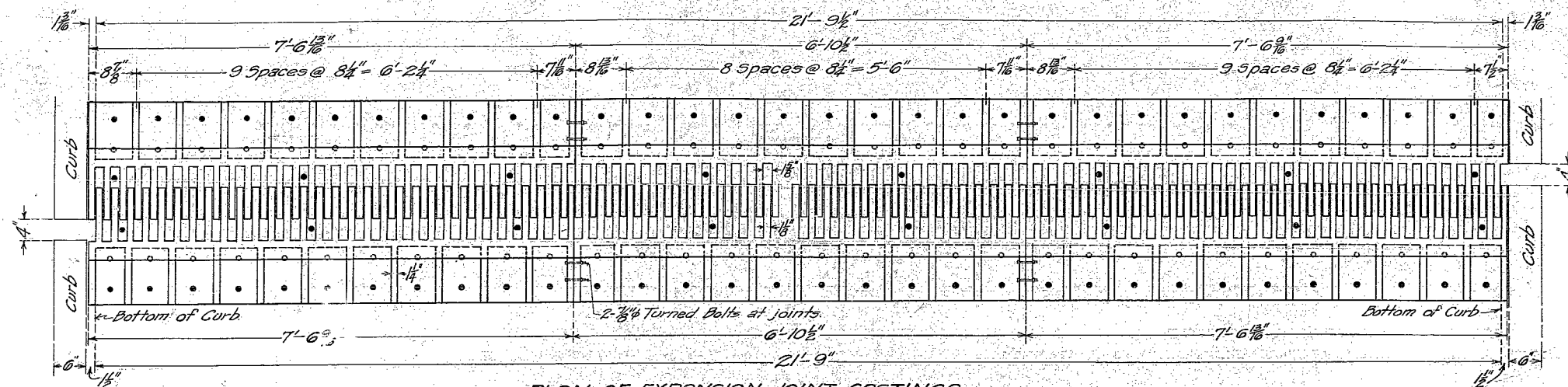


STATE OF ILLINOIS
DEPARTMENT OF PUBLIC WORKS & BUILDINGS
DIVISION OF HIGHWAYS

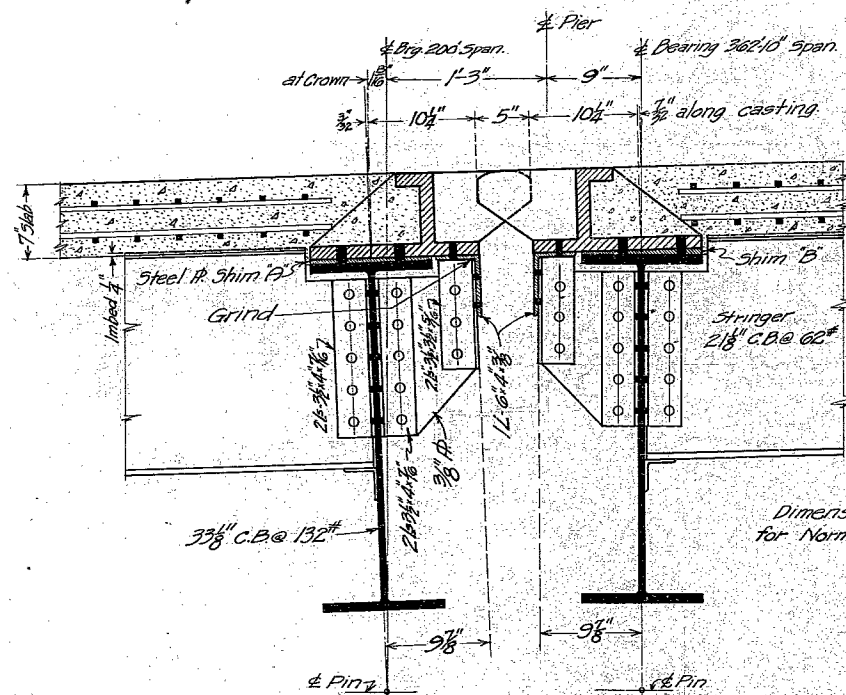
ROAD DISTRICT	SEC.	COUNTY	TOTAL SHEETS	SHEET NO.
70-A	109-C	La. Salle	11	11

SHEET NO. 9
17 SHEETS

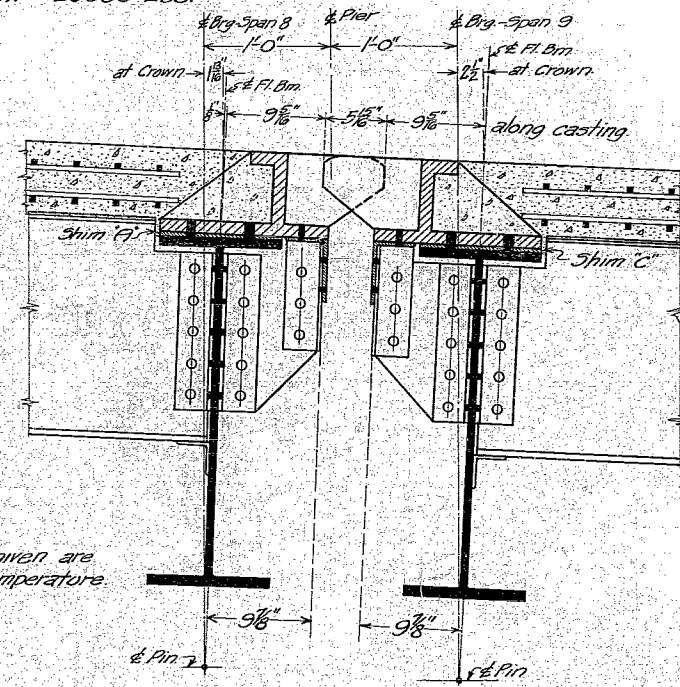
SHEET 11



PLAN OF EXPANSION JOINT CASTINGS.
All Metal-Cast Steel 1/2" thick except Fingers.
3 Sets Req'd. Total Est. Weight = 25350 Lbs.

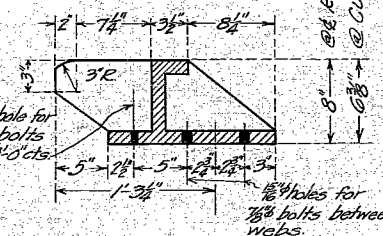


DETAIL OF EXPANSION JOINT
AT PIERS 2 & 3

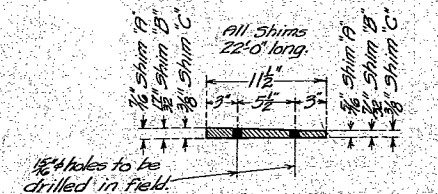


DETAIL OF EXPANSION JOINT
AT PIER 4

Note:
Top of Casting to be made to conform to crown of Roadway.



DETAIL OF EXPANSION JOINT CASTING



STEEL PLATE SHIMS
Req'd 3 Shims 'A'
" 2 " 'B'
" 1 " 'C'

Notes:-
Rivets 7/8" - Holes 1 1/8" unless noted
Holes in Shim, Floor Beam & support angle to be drilled in the field to fit Casting.
Finger Castings shall be assembled complete at the foundry and milled to fit and to proper dimensions.
For Expansion Joints at Piers 1 & 5, see Sheet No. 11
For General Notes, see Sheet No. 4

COMPUTED	- T. R. Murphy
CHECKED	- W. M. R. (Signature)
DRAWN	- W. M. R. (Signature)
CHECKED	- W. M. R. (Signature)
ASSEMBLED	-
CHECKED	-

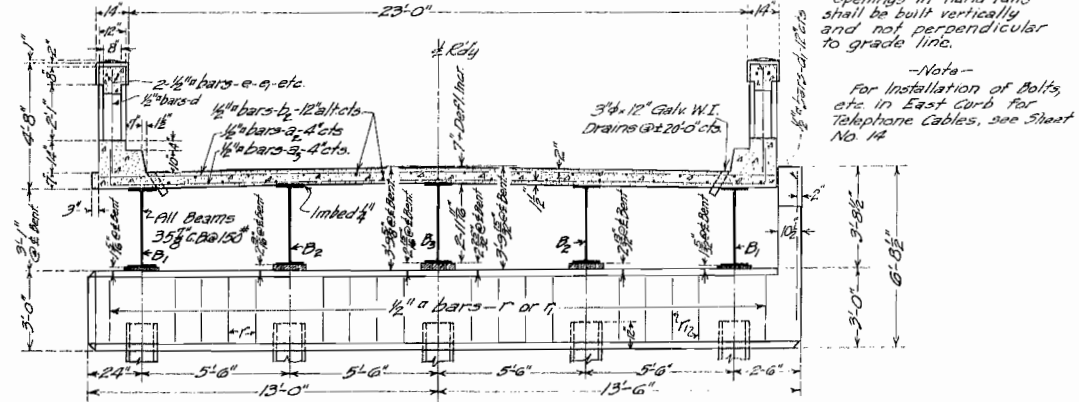
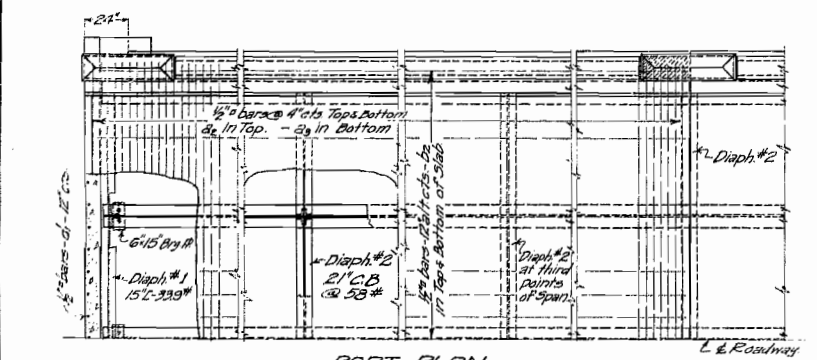
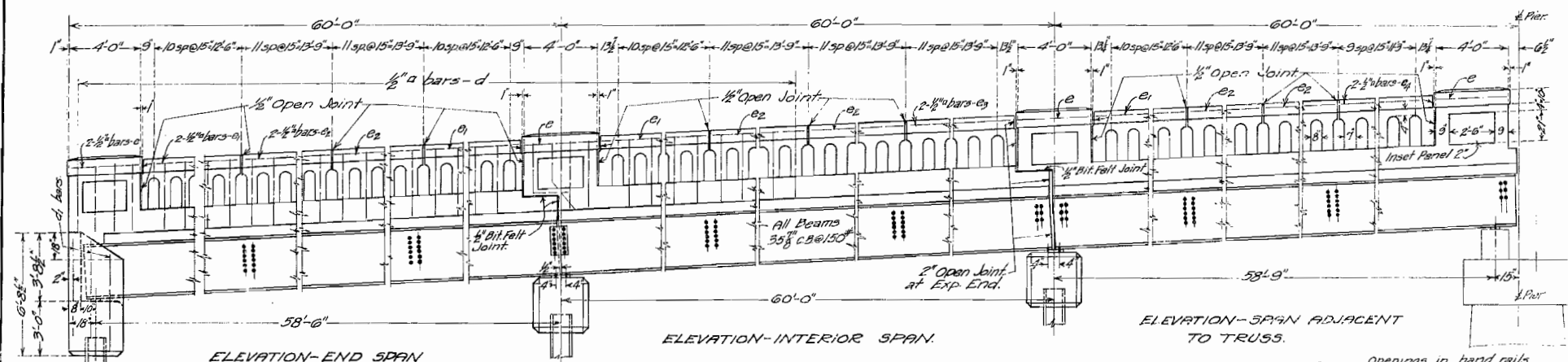
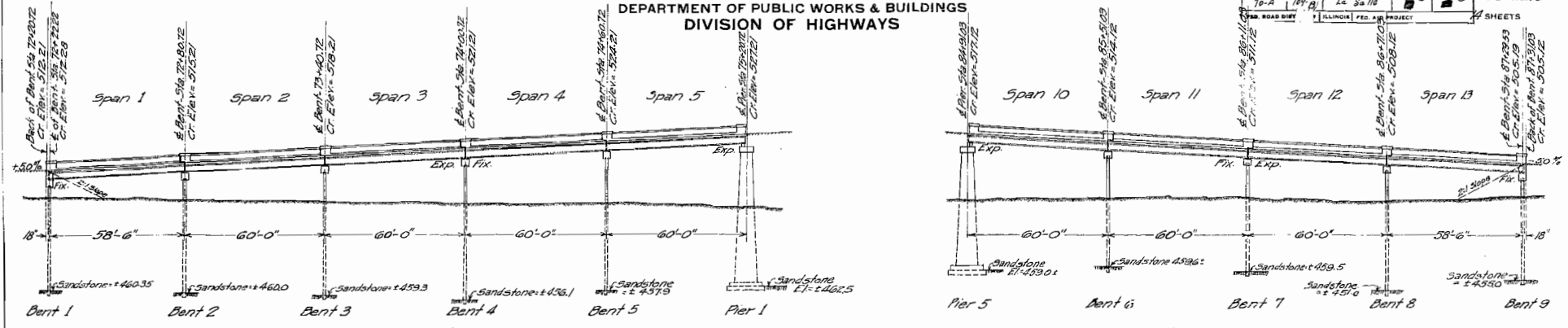
EXAMINED	4-27-1933
PASSED	(Signature)
APPROVED	(Signature)

EXPANSION JOINT CASTINGS
ILLINOIS RIVER BRIDGE
SENECA, ILLINOIS
S.B.I. ROUTE 70A - SEC. 109-C
LASALLE COUNTY

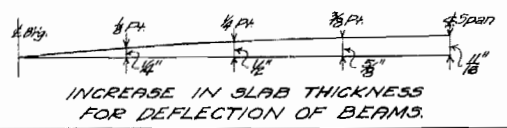


STATE OF ILLINOIS
DEPARTMENT OF PUBLIC WORKS & BUILDINGS
DIVISION OF HIGHWAYS

ROAD DISTRICT	COUNTY	TOTAL SHEETS	SHEET NO.
10-A	La Salle	3	10
PROJECT	SHEETS		



COMPUTED	<i>[Signature]</i>	EXAMINED	A-27-1037
CHECKED	<i>[Signature]</i>	DESIGNED	<i>[Signature]</i>
DRAWN	<i>[Signature]</i>	PASSED	<i>[Signature]</i>
CHECKED	<i>[Signature]</i>	APPROVED	<i>[Signature]</i>
SPECIAL		CHECKED	

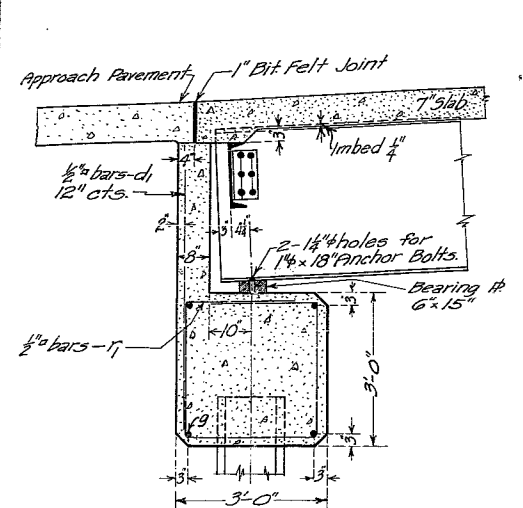


Openings in hand rails shall be built vertically and not perpendicular to grade line.

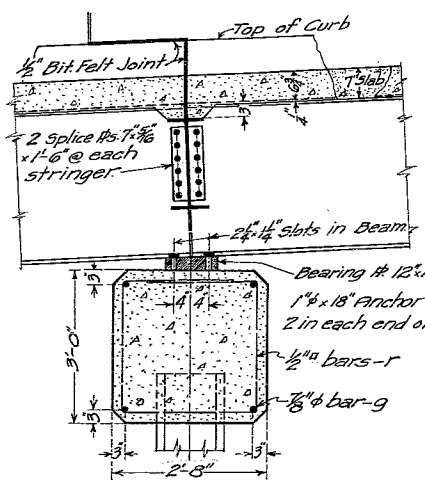
-Note-
For Installation of Bolts, etc in East Curb for Telephone Cables, see Sheet No. 14.

APPROACH SPANS-SHEET 1 OF 2
ILLINOIS RIVER BRIDGE
SENECA, ILLINOIS
S.B.I. ROUTE 70A- SEC. 109 P
LASALLE COUNTY

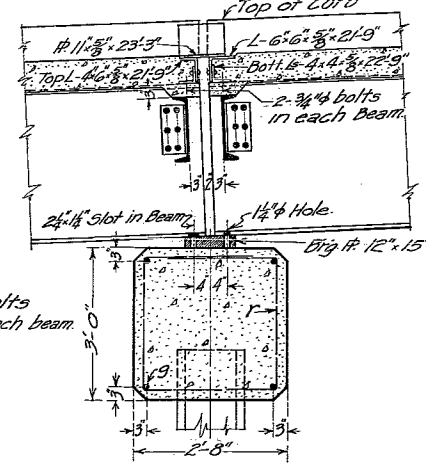
STATE OF ILLINOIS
DEPARTMENT OF PUBLIC WORKS & BUILDINGS
DIVISION OF HIGHWAYS



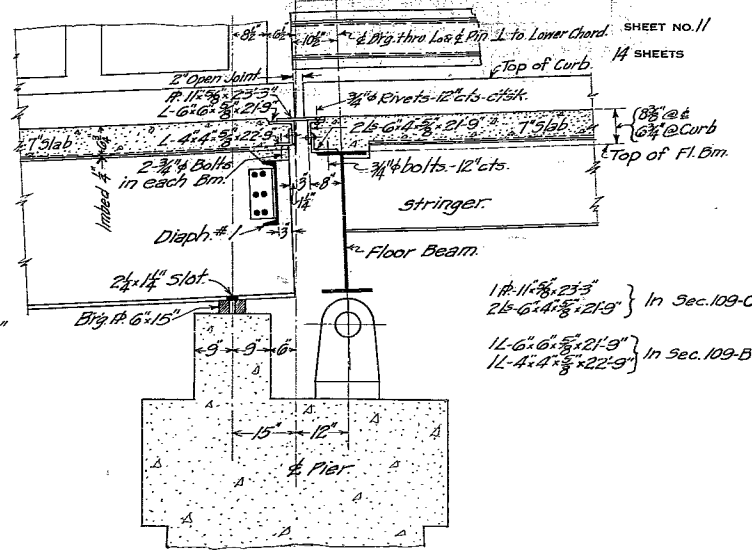
DETAIL AT BENTS 1 & 9



DETAIL AT BENTS 2, 3, 5, 6 & 8



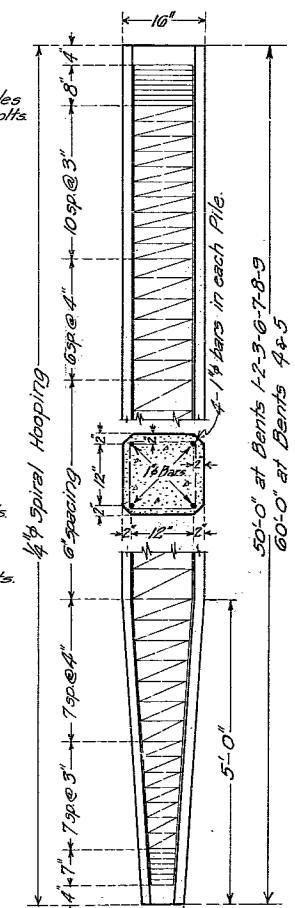
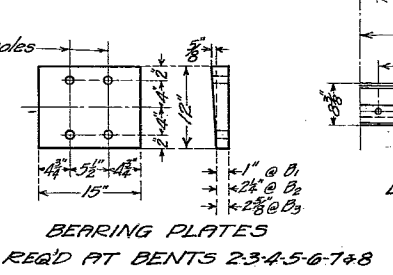
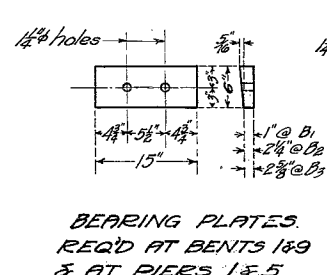
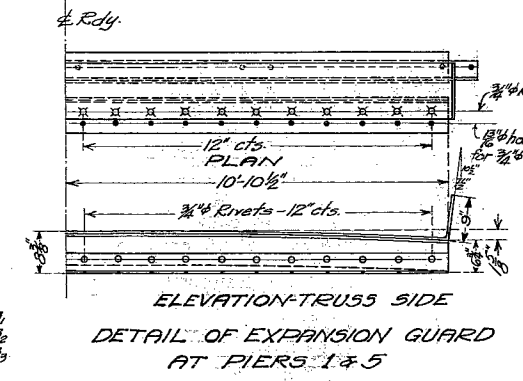
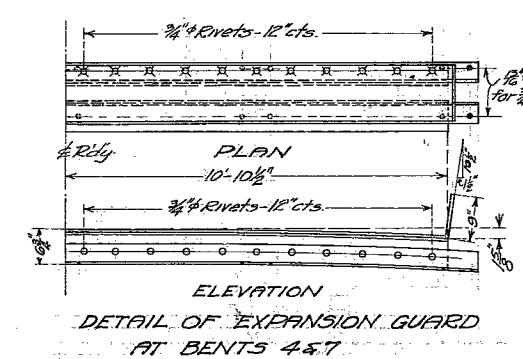
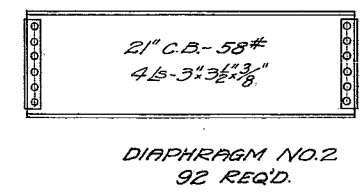
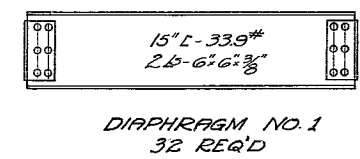
DETAIL AT BENTS 4 & 7



DETAIL AT PIERS 1 & 5

BILL OF MATERIAL
9 BEAM SPANS

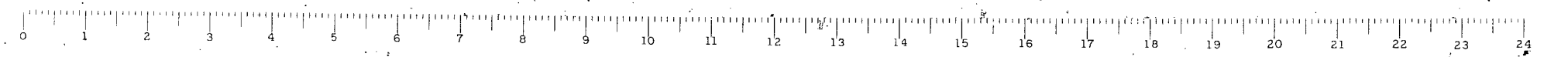
Bar No.	Size	Length
a ₁	1620	25'-0"
a ₂	1620	27'-0"
b ₂	450	30'-6"
d	850	3'-9"
d ₁	64	5'-0"
e	44	4'-0"
e ₁	44	13'-0"
e ₂	72	13'-6"
e ₃	20	14'-6"
e ₄	8	12'-0"
g	36	25'-6"
r	126	11'-6"
r ₁	36	12'-0"
Class X Concrete (Rail) - Cu Yds. 76.8		
Class X Concrete (Floor) - Cu Yds. 374.8		
Class X Concrete (Caps) - Cu Yds. 72.7		
Reinforcing Steel - Lbs. 91520		
Structural Steel - Lbs. 457050		
Reinf Concrete Piles - Lin Ft. 2350		



Notes:-
Rivets 3/4 inch holes 1/2 inch unless noted.
Class X Concrete shall be used throughout.
All Reinforcing Steel shall be wired securely in place before pouring concrete.
For finish of floor slab see Specifications, Art. 45.30.
Paint to be furnished by Illinois Division of Highways, one coat in the shop and three coats in the field.
Inspection by Illinois Division of Highways before painting.
In erection of superstructure, intermediate diaphragms shall be connected and anchor bolts in place before riveting diaphragms over bents.
Concrete Piles shall have a bearing capacity of not less than 35 Tons.
Contractor shall cast and drive two test piles before constructing the rest of the piles. One test pile to be driven at Sta. 74+00.72 and one at Sta. 86+71.03.

APPROACH SPANS SHEET 2 OF 2
ILLINOIS RIVER BRIDGE
SENECA, ILLINOIS
S.B.I. ROUTE 70A - SEC. 109 B
LASALLE COUNTY

COMPUTED - R.B. Murphy
CHECKED - E.M. Romine
DRAWN - R.B.M.
CHECKED - E.M.R.
ASSEMBLED -
CHECKED -
EXAMINED - A-27-1932
BRIDGE ENGINEER
PASSED -
ENGINEER OF DESIGN
APPROVED -
CHIEF HIGHWAY ENGINEER



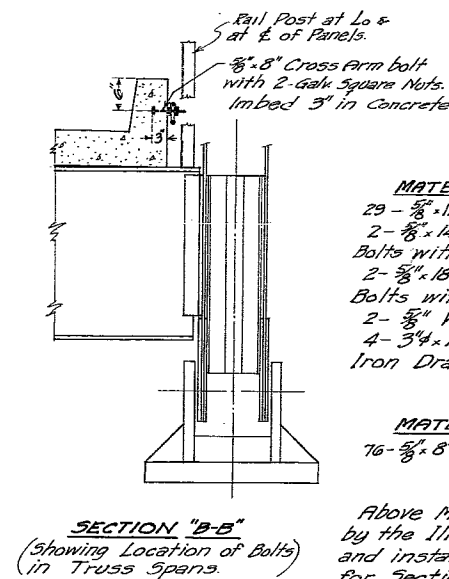
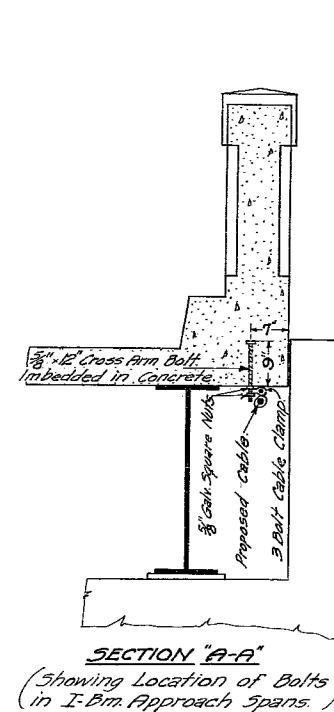
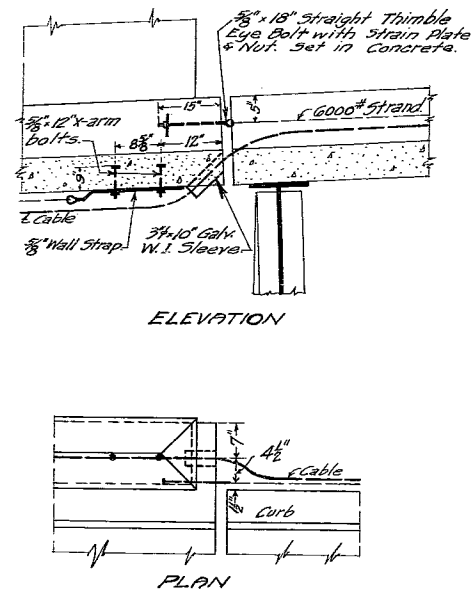
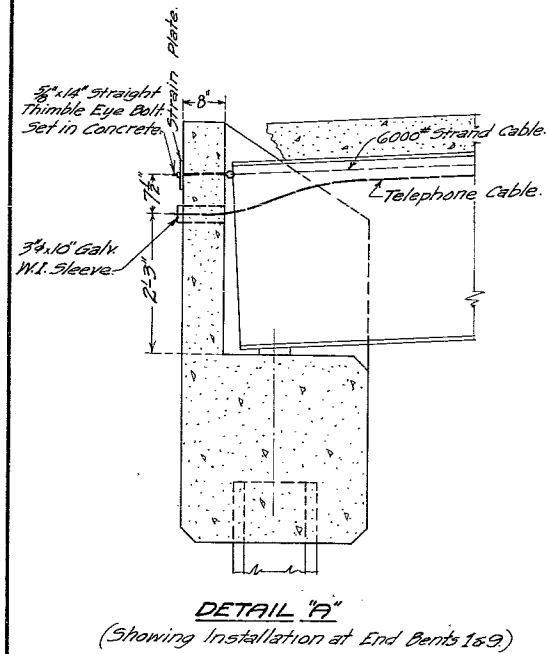
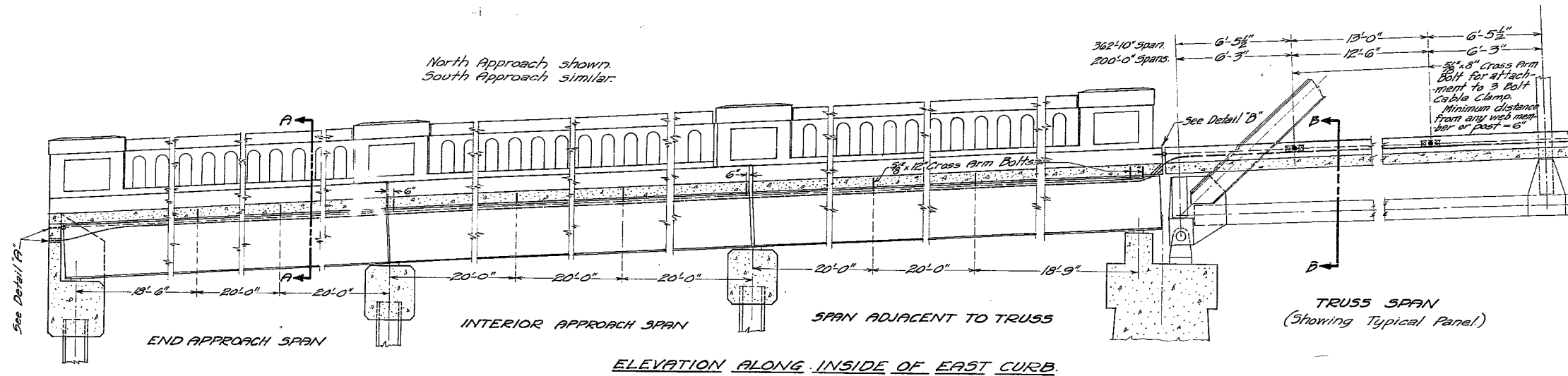
STATE OF ILLINOIS
DEPARTMENT OF PUBLIC WORKS & BUILDINGS
DIVISION OF HIGHWAYS

ROAD DISTRICT NO.	SEC.	COUNTY	TOTAL SHEETS	SHEET NO.
70-A	109-B	La Salle	17	16

SHEET NO. 14

14 SHEETS

SHEET 14



MATERIAL FOR SEC. 109-B
29 - 5/8" x 12" Cross Arm Bolts-complete.
2 - 5/8" x 12" Straight Thimble Eye Bolts with strain plate & nut.
2 - 5/8" x 18" Straight Thimble Eye Bolts with strain plate & nut.
2 - 3/8" Wall Straps.
4 - 3/4" x 10" Galvanized Wrought Iron Drain Pipes.

MATERIAL FOR SEC. 109-C
76 - 5/8" x 8" Cross Arm Bolts-complete.

Note
Above Material to be furnished by the Illinois Bell Telephone Co. and installed by the Contractors for Sections 109-B and 109-C respectively.

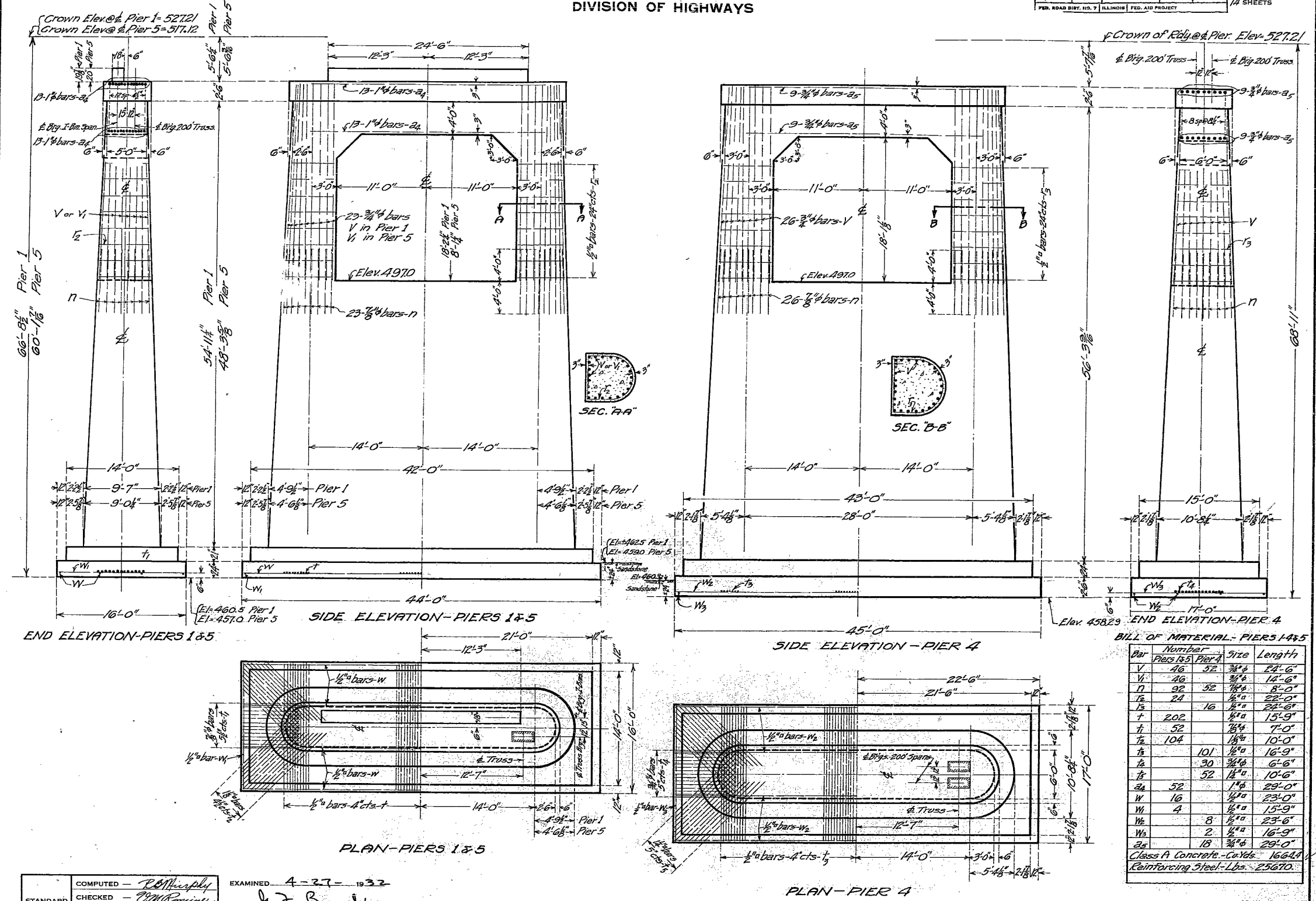
STANDARD	COMPUTED --	EXAMINED 4-27-1932
	CHECKED --	A. F. Burch
	DRAWN -- R. H. Murphy	BRIDGE ENGINEER
	CHECKED -- W. M. Romine	PASSED
SPECIAL	ASSEMBLED --	ENGINEER OF DESIGN
	CHECKED --	APPROVED
		Chief Highway Engineer

TELEPHONE CABLE CONNECTIONS
ILLINOIS RIVER BRIDGE
SENECA, ILLINOIS
S.B.I. ROUTE 70 A-SEC. 109 B & C
LASALLE COUNTY

STATE OF ILLINOIS
DEPARTMENT OF PUBLIC WORKS & BUILDINGS
DIVISION OF HIGHWAYS

ROAD ISSUE NO.	SEC.	COUNTY	TOTAL SHEETS	SHEET NO.
70-A	109-B	La Salle	17	14
SHEET NO. 12				
14 SHEETS				

SHEET 15



BILL OF MATERIAL - PIERS 1, 4 & 5

Bar	Number	Size	Length
V	40	3/4"	24'-6"
V	40	3/4"	14'-6"
V	40	3/4"	8'-0"
V	24	3/4"	22'-0"
V	16	3/4"	24'-6"
T	202	1/2"	15'-9"
T	52	1/2"	7'-0"
T	104	1/2"	10'-0"
T	101	1/2"	16'-9"
T	30	3/4"	6'-6"
T	52	1/2"	10'-6"
W	52	1/2"	29'-0"
W	16	1/2"	23'-0"
W	4	1/2"	15'-9"
W	8	1/2"	23'-6"
W	2	1/2"	16'-9"
W	18	3/4"	29'-0"

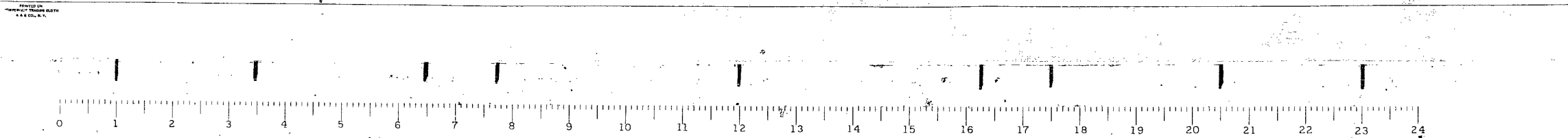
Class A Concrete - Cu Yds. 16644
Reinforcing Steel - Lbs. 25670

COMPUTED - R. Murphy
CHECKED - C. K. Kinnear
DRAWN - R. B. M.
CHECKED - J. M. R.
SPECIAL ASSEMBLED -
CHECKED -

EXAMINED 4-27-1932
J. F. B...
PASSED...
APPROVED...
CHIEF HIGHWAY ENGINEER

Class A Concrete to be used throughout.
All Reinforcing Steel to be wired securely
in place before pouring concrete.

PIERS 1, 4 & 5
ILLINOIS RIVER BRIDGE
SENECA, ILLINOIS
S.B.I. ROUTE 70A-SEC. 109 B
LASALLE COUNTY



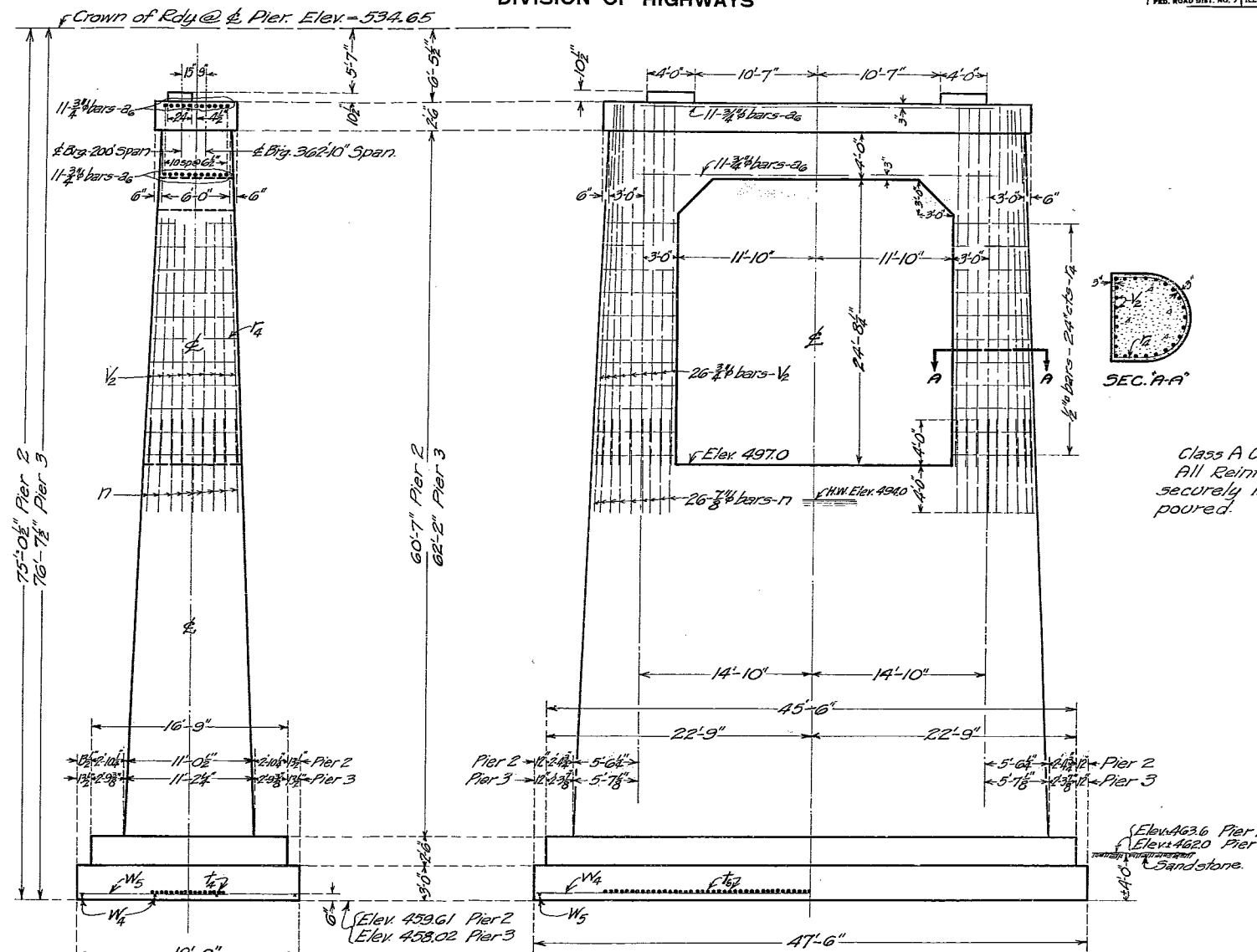
STATE OF ILLINOIS
DEPARTMENT OF PUBLIC WORKS & BUILDINGS
DIVISION OF HIGHWAYS

ROAD ISSUE ROUTE NO.	SEC.	COUNTY	TOTAL SHEETS	SHEET NO.
70-A	109-B	La Salle	17	15

SHEET NO. 13

14 SHEETS

SHEET 16



BILL OF MATERIAL
PIERS 2 & 3

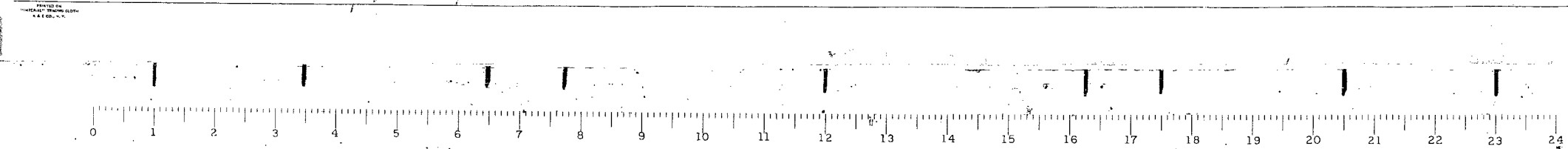
Bar No.	Size	Length
T ₄	3/4" φ	6'-6"
T ₆	3/4" φ	18'-9"
T ₇	1 1/2" φ	11'-0"
V ₂	3/4" φ	31'-0"
W ₄	1 1/2" φ	24'-6"
W ₅	1 1/2" φ	18'-9"
N ₇	1 1/2" φ	8'-0"
I ₂	1 1/2" φ	25'-6"
26	3/4" φ	30'-0"

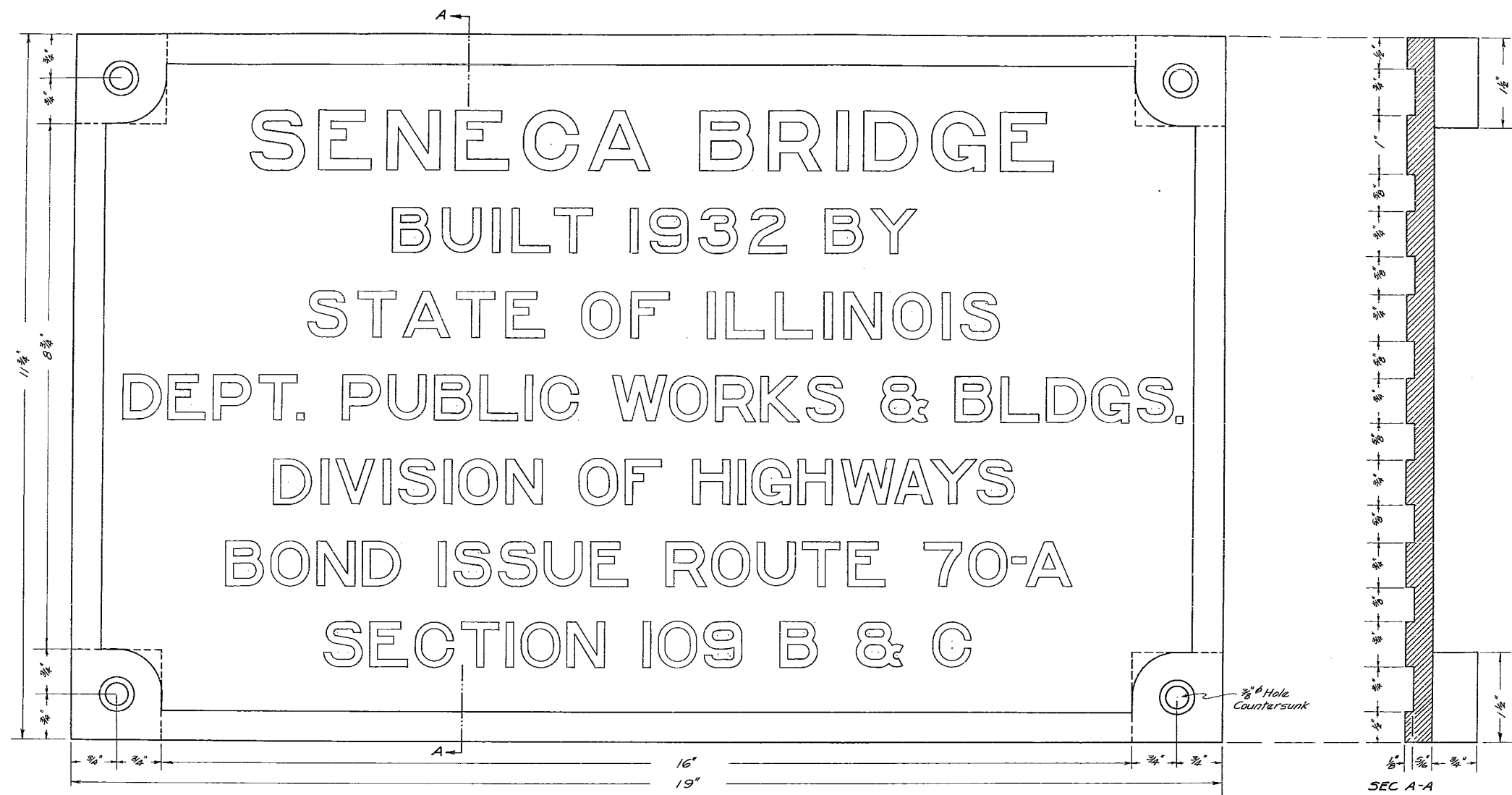
Class A Concrete - CuYs. 1496.8
Reinforcing Steel - Lbs. 21850

Class A Concrete to be used throughout.
All Reinforcing Steel to be wired
securely in place before concrete is
poured.

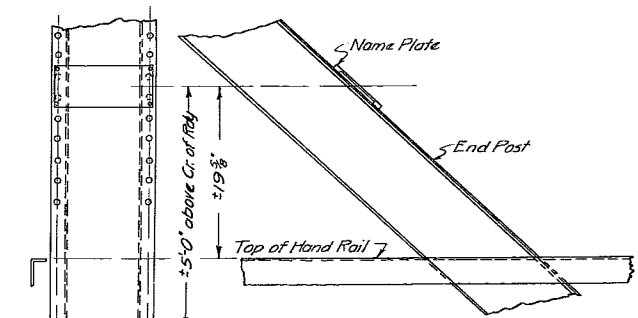
COMPUTED	— R.B. Murphy	EXAMINED	— A.F. Bunker	4-3-32
CHECKED	— C.M. Remine	PASSED	— J. J. [Signature]	
DRAWN	— R.B.M.	APPROVED	— J. J. [Signature]	
CHECKED	— C.M.R.			
SPECIAL	ASSEMBLED			
	CHECKED			

PIERS 2 & 3
ILLINOIS RIVER BRIDGE
SENECA, ILLINOIS
S.B.I. ROUTE 70A-SEC. 109 B
LASALLE COUNTY





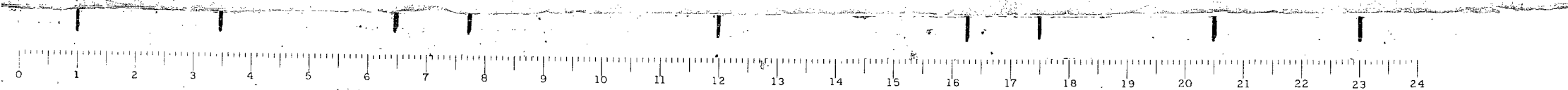
Plates shall be made of best quality bronze.
Lettering and border shall be raised 1/8" above face of plate
and polished. All lettering shall be square cut, not tapered.
Plates shall be rigidly attached to end post of bridge by four
bronze bolts, 3" long.
Two plates shall be provided and attached to the End Post on the
right hand side of roadway of each end of steel bridge.
See detail for location of name plate on end post.

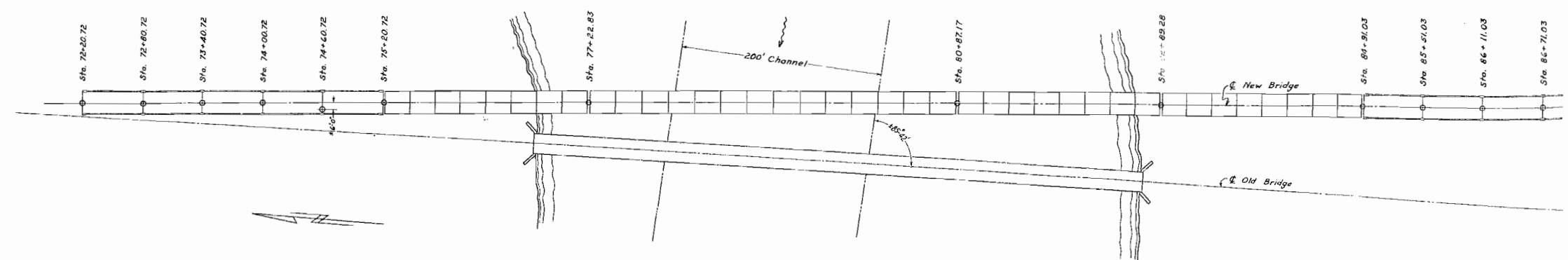


NAME PLATE
ILLINOIS RIVER AT SENECA, ILL.
S.B.I. RT. 70-A SEC. 109 B&C
LASALLE CO.

STANDARD	COMPUTED	---
	CHECKED	---
	DRAWN	M. J. Peter
SPECIAL	CHECKED	---
	ASSEMBLED	---
	CHECKED	---

EXAMINED 11-29-1932
A. F. Smith
BRIDGE ENGINEER
PASSED
M. J. Peter
ENGINEER OF DESIGN
APPROVED
Frank T. Galt
CHIEF HIGHWAY ENGINEER

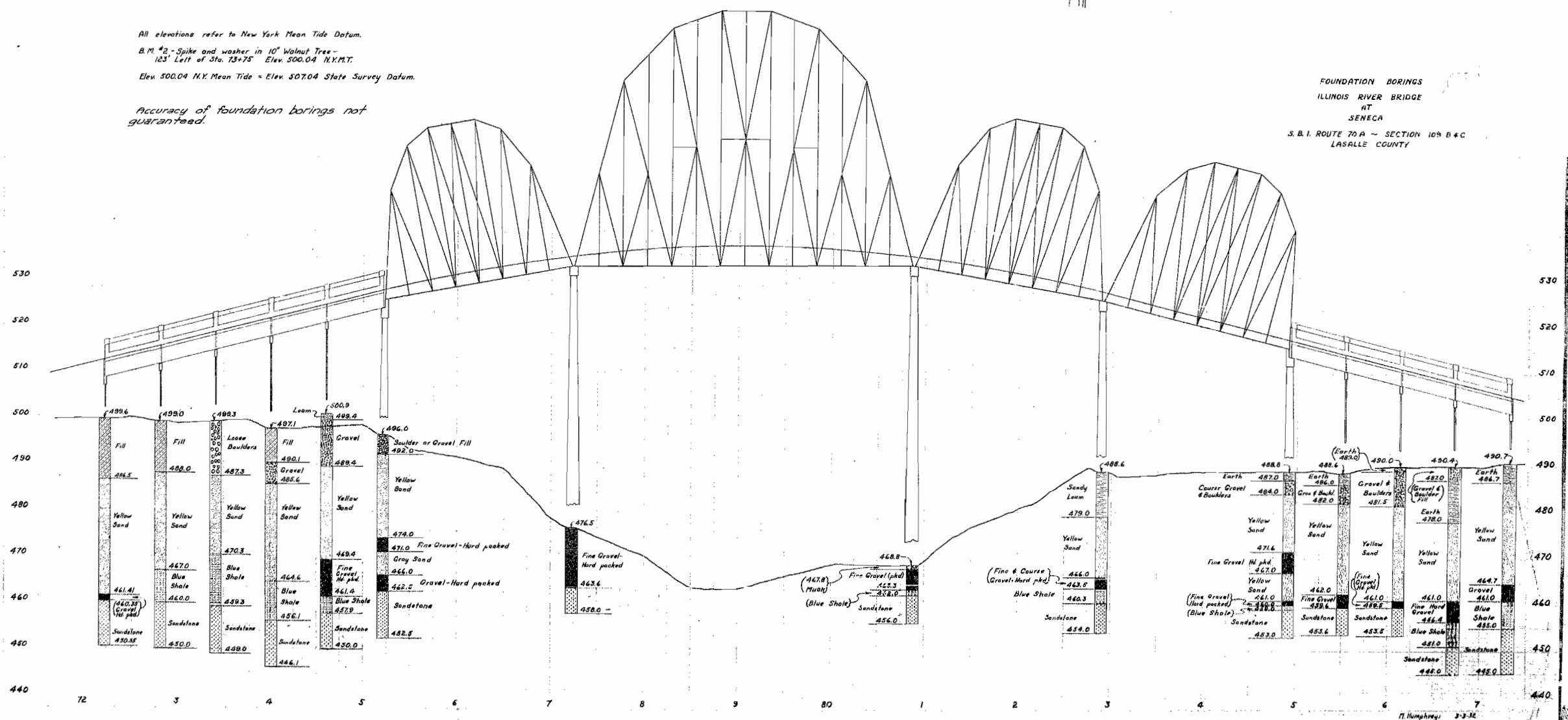




All elevations refer to New York Mean Tide Datum.
 B.M. #2 - Spike and washer in 10" Walnut Tree -
 123' Left of Sta. 73+75 Elev. 500.04 N.Y.M.T.
 Elev. 500.04 N.Y. Mean Tide = Elev. 507.04 State Survey Datum.

Accuracy of foundation borings not guaranteed.

FOUNDATION BORINGS
 ILLINOIS RIVER BRIDGE
 AT
 SENECA
 S. B. I. ROUTE 70 A - SECTION 109 B & C
 LASALLE COUNTY



H. Humphrey, J. J. M.