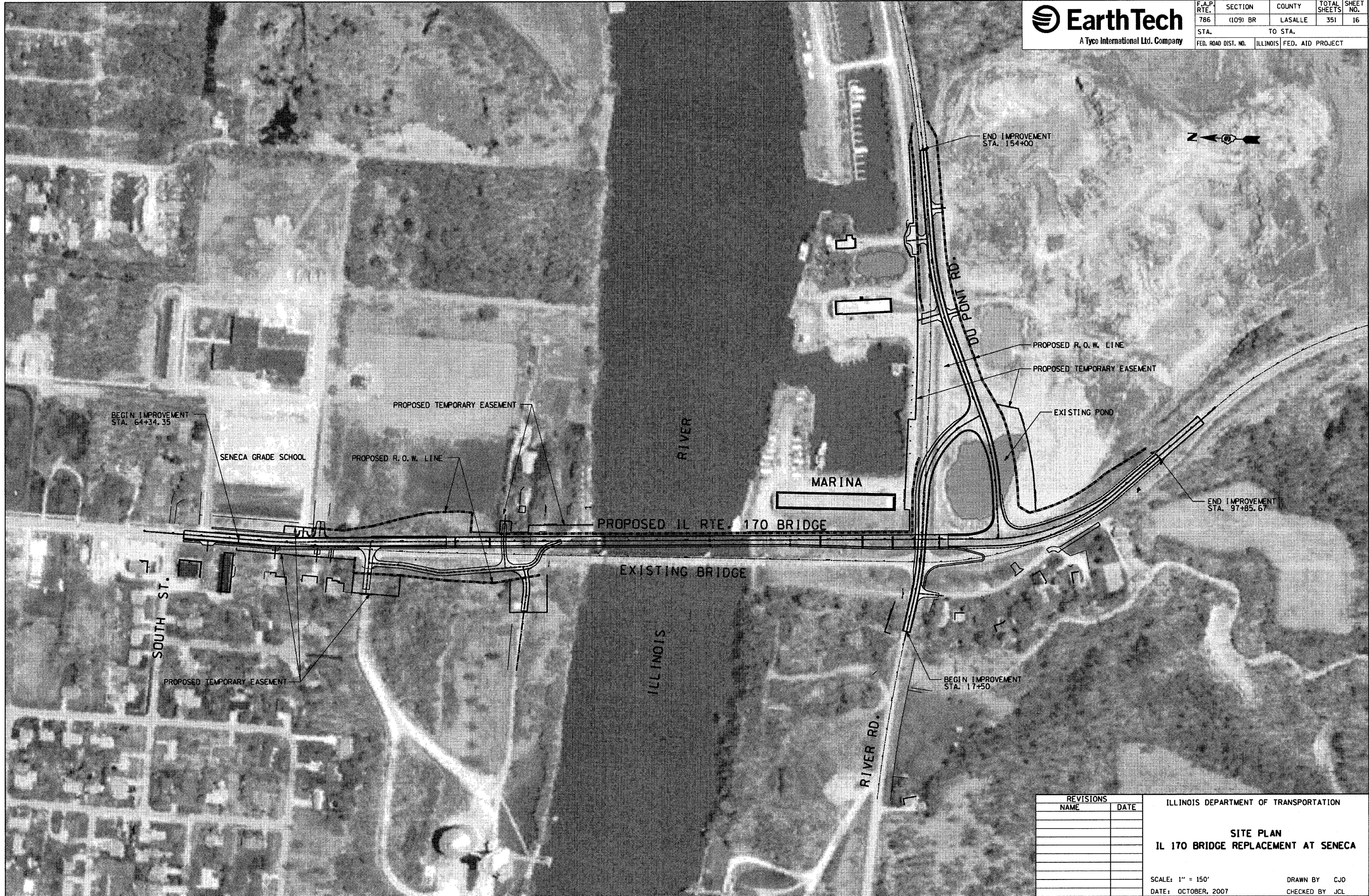


F.A.P. RTE.	SECTION	COUNTY	TOTAL SHEETS	SHEET NO.
786	(109) BR	LASALLE	351	16
STA.		TO STA.		
FED. ROAD DIST. NO.		ILLINOIS FED. AID PROJECT		



PLOT DATE = 10/11/2007  
 PLOT NAME = #511114  
 PLOT SCALE = #50N14  
 USER NAME = Project

REVISIONS	
NAME	DATE

ILLINOIS DEPARTMENT OF TRANSPORTATION

**SITE PLAN**  
**IL 170 BRIDGE REPLACEMENT AT SENECA**

SCALE: 1" = 150'  
 DATE: OCTOBER, 2007

DRAWN BY: CJO  
 CHECKED BY: JCL