



F.A.P. RTE.	SECTION	COUNTY	TOTAL SHEETS	SHEET NO.
786	(109) BR	LASALLE	351	23
STA.		TO STA.		
FED. ROAD DIST. NO.		ILLINOIS FED. AID PROJECT		

**PROPOSED PAVEMENT MARKING**

LOCATION	THERMOPLASTIC					LETTERS & SYMBOLS (SQ. FT.)	POLYUREA, TYPE 2					LETTERS & SYMBOLS (SQ. FT.)
	MARKING LINE						MARKING LINE					
	4" (FEET)	6" (FEET)	8" (FEET)	12" (FEET)	24" (FEET)		4" (FEET)	6" (FEET)	8" (FEET)	12" (FEET)	24" (FEET)	
<b>IL-170</b>												
62+31.19 to 71+64.42							1954.3					
71+64.42 to 76+00.00							1742.5					
76+00 to 86+00							4456.6		39.3			
86+00 to 89+26.75							1320.0		19.1	73.4		
86+00 to 99+09.49							4889.8		329.2	162.0	62.4	
87+32 to 89+07									43.8			
<b>River Road</b>												
17+11.28 to 25+52	1567.92											
<b>Dupont Road</b>												
140+83.64 to 149+00	2960.8				28.8							
149+00 to 155+08.33	2216.9											
<b>TOTALS:</b>	6745.6	0.0	0.0	0.0	28.8	0	14363.1	0.0	392.1	274.6	0	62.4

**TEMPORARY PAVEMENT MARKING SCHEDULE**

	MARKING LINE	MARKING LINE
	4" (FEET)	24" (FEET)
<b>STAGE I - PHASE 1</b>	10200	0
<b>STAGE I - PHASE 2</b>	9789	0
<b>STAGE 2 - PHASE 1</b>	24035	50
<b>STAGE 2 - PHASE 2</b>	7333	50
<b>STAGE 3</b>	9273	0
<b>TOTALS:</b>	60630	100

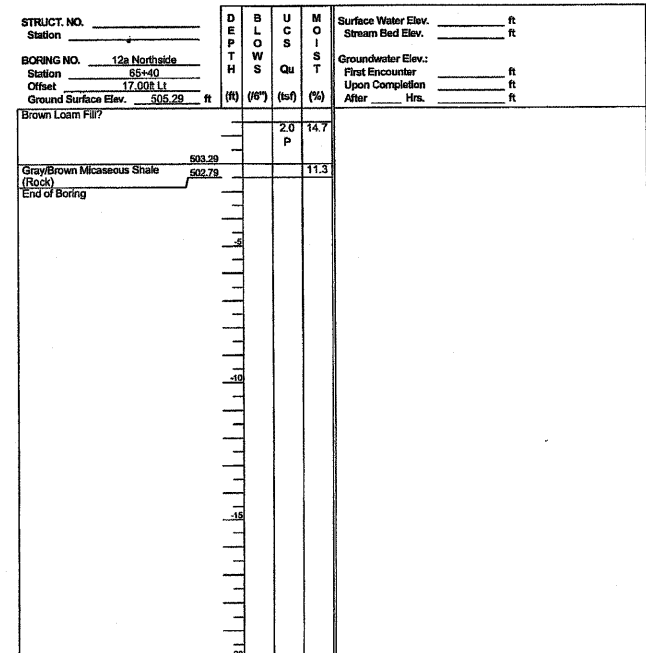
**ROCK EXCAVATION FOR STRUCTURES**

LOCATION		ROCK EXCAVATION FOR STRUCTURES	
STATION TO	STATION	CU YD	
65+00.00	TO 67+00.00	186	
67+00.00	TO 71+20.00	102	
<b>TOTAL</b>		<b>288</b>	



**SOIL BORING LOG**

ROUTE IL 170 DESCRIPTION North Line Boring LOGGED BY LM-IDOT  
 SECTION BRIDGE OVER ILLINOIS RIVER LOCATION SEC. TWP. RING.  
 COUNTY LASALLE DRILLING METHOD HAMMER TYPE HAMMER



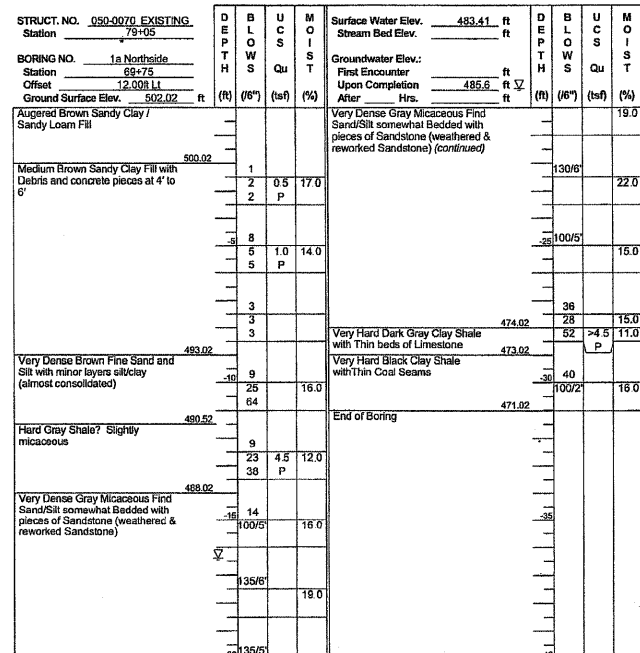
The Unconfined Compressive Strength (UCS) Failure Mode is indicated by (B-Bulge, S-Shear, P-Penetrometer)  
 The SPT (N value) is the sum of the last two blow values in each sampling zone (ASTM D1586)

BBS, from 137 (Rev. 8-99)



**SOIL BORING LOG**

ROUTE IL 170 DESCRIPTION Boring for proposed bridge location LOGGED BY LM-IDOT  
 SECTION BRIDGE OVER ILLINOIS RIVER LOCATION SW 1/4, SEC. 25, TWP. 33N, RING. 5E, 3rd PM  
 COUNTY LASALLE DRILLING METHOD Hollow Stem Auger HAMMER TYPE AUTOMATIC



The Unconfined Compressive Strength (UCS) Failure Mode is indicated by (B-Bulge, S-Shear, P-Penetrometer)  
 The SPT (N value) is the sum of the last two blow values in each sampling zone (ASTM D1586)

BBS, from 137 (Rev. 8-99)

**REVISIONS**

NO.	NAME	DATE
1001		10-30-07

ILLINOIS DEPARTMENT OF TRANSPORTATION

**SCHEDULE OF QUANTITIES**

SCALE: 1" = 20'  
 DATE OCTOBER, 2007

DRAWN BY CJO  
 CHECKED BY JCL

REVISED 10-30-07 MJ