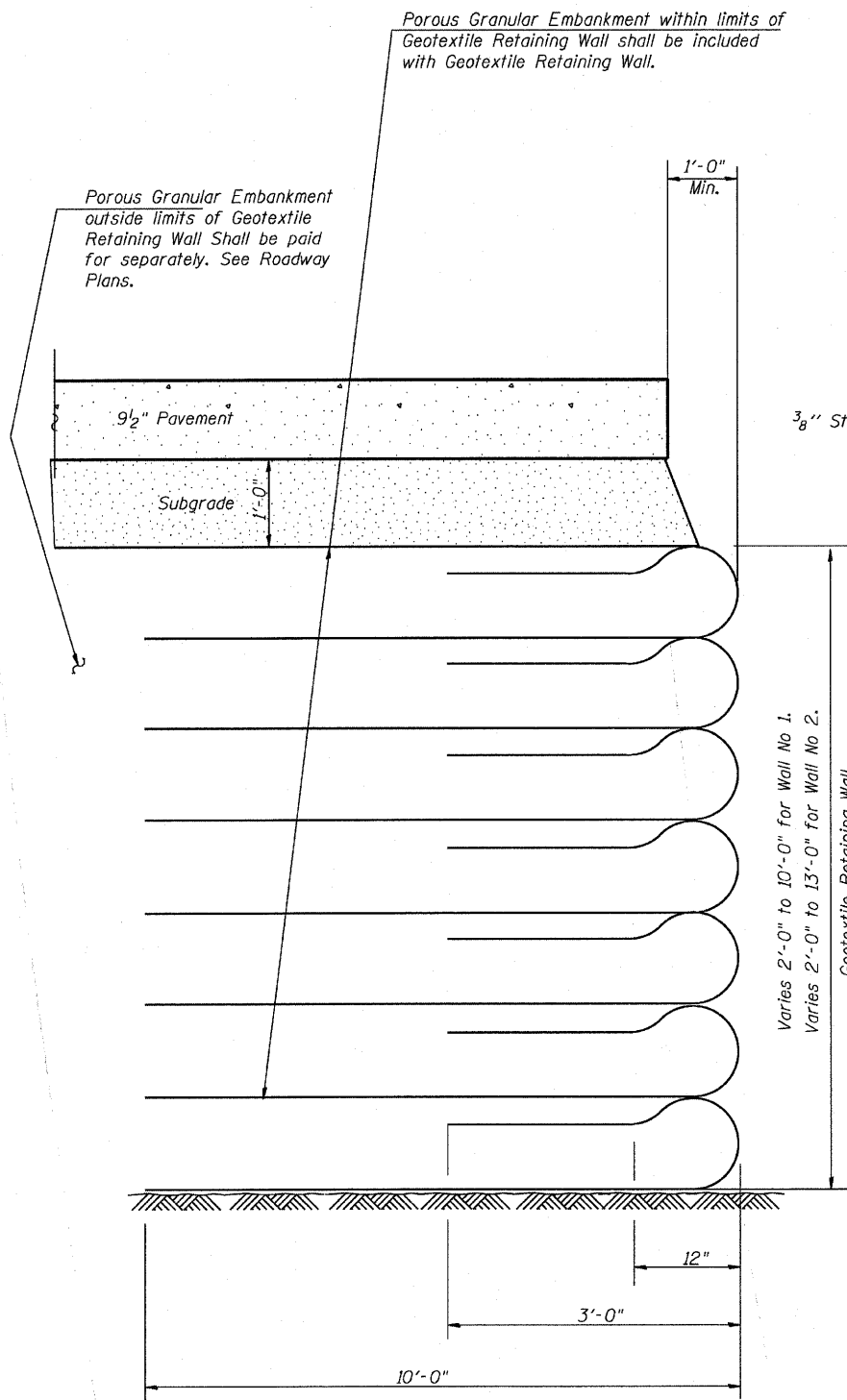
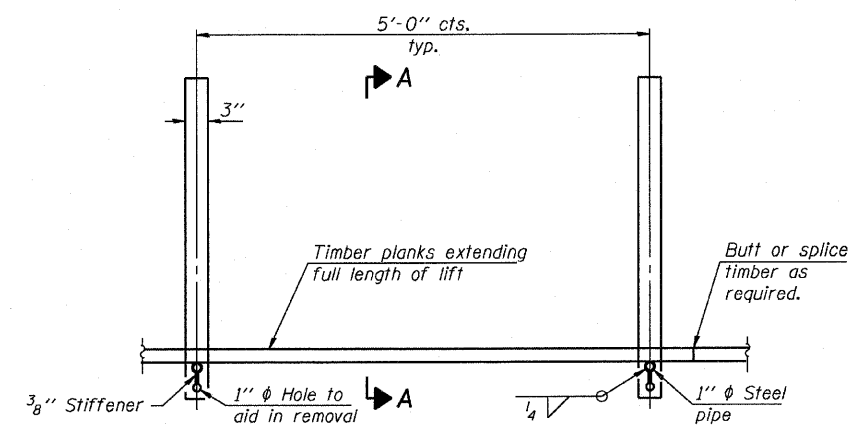


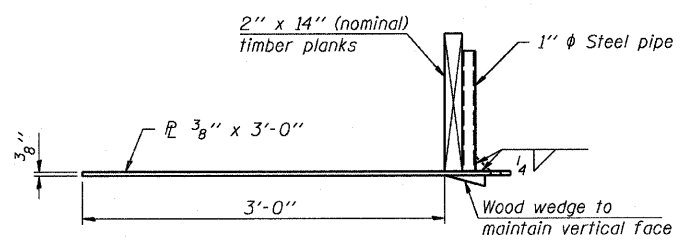
F.A.P. RTE.	SECTION	COUNTY	TOTAL SHEETS	SHEET NO.
786	(109) BR	LASALLE	351	50
STA.		TO STA.		
FED. ROAD DIST. NO.	ILLINOIS	FED. AID PROJECT		



TYPICAL SECTION THRU GEOTEXTILE RETAINING WALL
N.T.R.



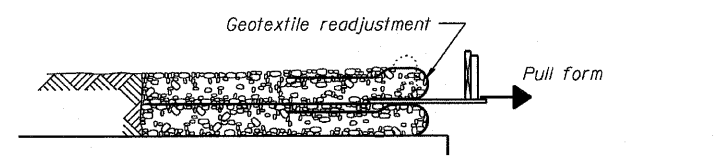
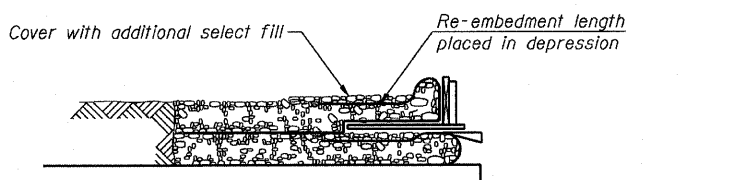
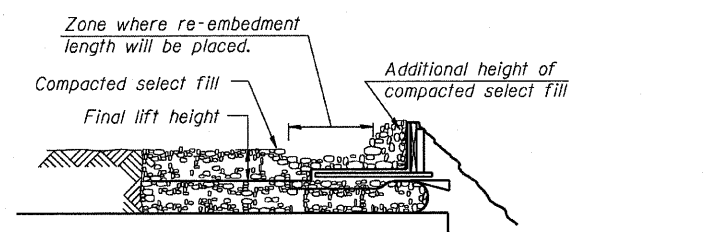
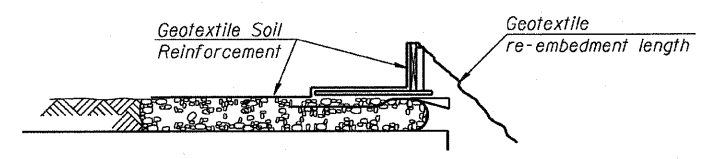
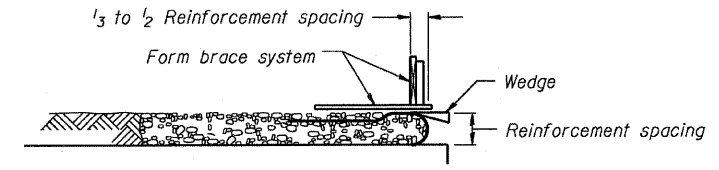
PLAN



SECTION A-A

TEMPORARY GEOTEXTILE FORM BRACE DETAIL

Note:
This is a suggested detail, the Contractor is responsible for the design of the form brace system to be used.



TEMPORARY GEOTEXTILE WALL CONSTRUCTION SEQUENCE

1. Place form brace system on completed reinforcement level; back from the finished fabric face a distance of 1/3 to 1/2 the geotextile reinforcement spacing.
2. Position fabric so that the required geotextile re-embedment length extends over the top of the form brace and the design reinforcement width is placed with no slack against the previous level.
3. Compact select fill material in lifts to final lift height, create (±3") depression in zone where re-embedment length will be located and place additional height of compacted select fill against form brace.
4. Fold geotextile re-embedment length back over form brace into zone where depression was made in select fill and place additional select fill (±3") to embed geotextile and bring to final lift height.
5. Pull form brace outward allowing geotextile face to slightly readjust to form tight round face level with plan reinforcement spacing.

Note:
The geotextile soil reinforcement shall have a minimum allowable tensile strength (T min.) of 240 lb./in. as determined by the procedure described in the Special Provision. The computations supporting the determination of (T min.) shall be submitted to the engineer for approval.

Notes:
Location & length Geotextile Retaining Wall No. 1 & No. 2
See Roadway Plans Sheet 55 and 57

REVISIONS	
NAME	DATE

ILLINOIS DEPARTMENT OF TRANSPORTATION

GEOTEXTILE WALL

SCALE: DATE: JUNE 29, 2007

DRAWN BY: OCY
CHECKED BY: OCY