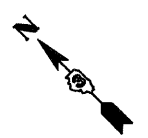
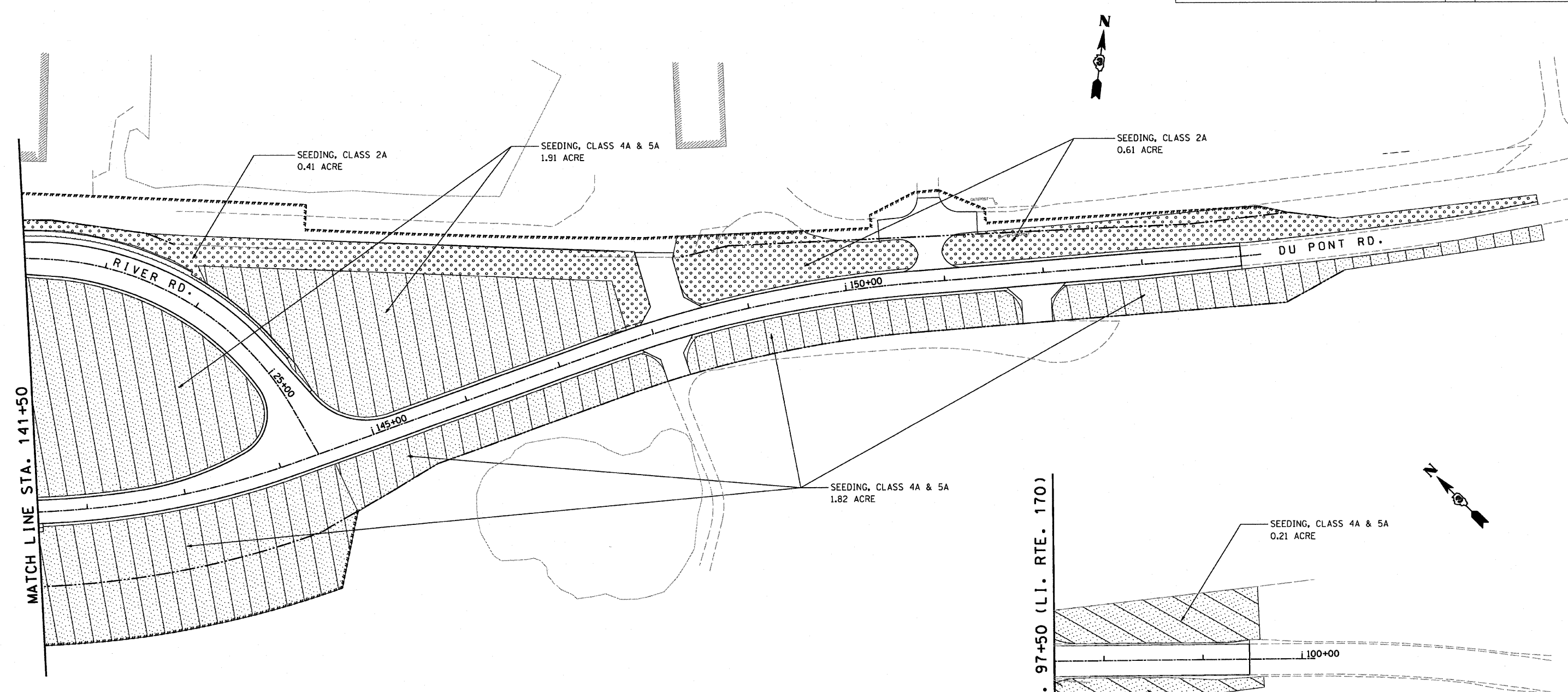


F.A.P. RTE.	SECTION	COUNTY	TOTAL SHEETS	SHEET NO.
786	(109) BR	LASALLE	351	182
STA. 61+50		TO STA. 100+00		
FED. ROAD DIST. NO.		ILLINOIS	FED. AID PROJECT	



MATCH LINE STA. 141+50

MATCH LINE STA. 97+50 (LI. RTE. 170)

**LEGEND**

	SEEDING CLASS 1
	SEEDING CLASS 2A
	SEEDING CLASS 3
	SEEDING CLASS 4A AND 5A
	SODDING, SALT TOLERANT

CODE	ITEM DESCRIPTION	UNIT	TOTAL QUANTITY
25000100	SEEDING, CLASS 1	ACRE	0.80
25000210	SEEDING, CLASS 2A	ACRE	3.96
25000300	SEEDING CLASS 3	ACRE	1.18
25000312	SEEDING CLASS 4A	ACRE	7.87
25000322	SEEDING CLASS 5A	ACRE	7.87
25000400	NITROGEN FERTILIZER NUTRIENT	POUND	1976
25000500	PHOSPHORUS FERTILIZER NUTRIENT	POUND	1976
25000600	POTASSIUM FERTILIZER NUTRIENT	POUND	1976
25200110	SODDING, SALT TOLERANT	SQ YD	1995

NOTE: ALL SEEDING AREAS TO BE COVERED WITH MULCH, METHOD 2. (SEE EROSION CONTROL PLANS).

REVISIONS	
NAME	DATE

ILLINOIS DEPARTMENT OF TRANSPORTATION

**LANDSCAPE PLAN**

**IL 170 BRIDGE REPLACEMENT AT SENECA**

SCALE: 1" = 50'

DATE: OCTOBER, 2007

DRAWN BY: REB  
CHECKED BY: JCL

PLOT DATE = 10/11/2007  
 FILE NAME = MFL182  
 PLOT SCALE = 1/8" = 1'-0"  
 USER NAME = project