

BENCH MARK

Chiseled square on N-E side of manhole rim at the intersection of IL 170 and South Street. Elevation 508.497

EXISTING STRUCTURE

Structure No. 050-0070 was constructed in 1932. This structure consists of 4 steel truss spans and 9 steel stringer approach spans. The truss spans are supported on spread footing piers and the approach spans are supported on pile bents. The overall length is 1510'-3 3/4". Structure provides 21'-6" roadway width. Traffic shall be maintained on this structure while the new structure is under construction. No Salvage.

STATE OF ILLINOIS
DEPARTMENT OF TRANSPORTATION

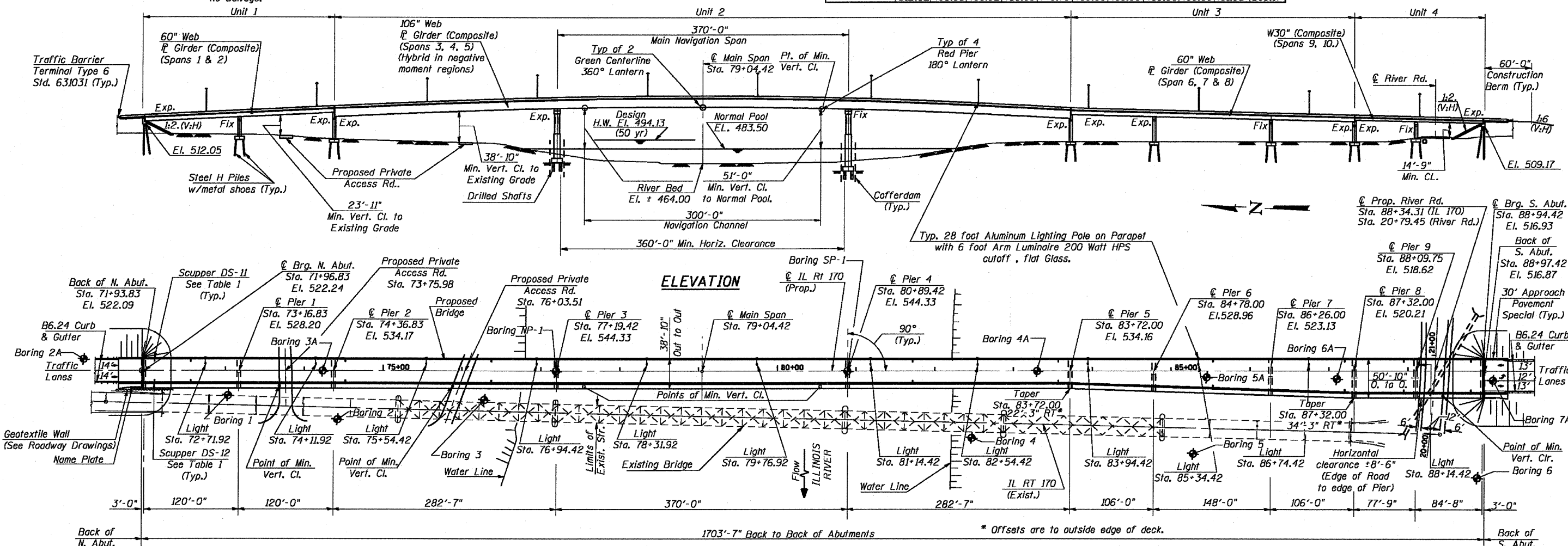


F.A.P. ROUTE NO.	SECTION	COUNTY	SHEET	DATE	SHEET NO. 1
786	109 BR	La Salle	351	201	89 SHEETS
FED. ROAD DIST. NO. 7	ILLINOIS	FED. AID PROJECT			

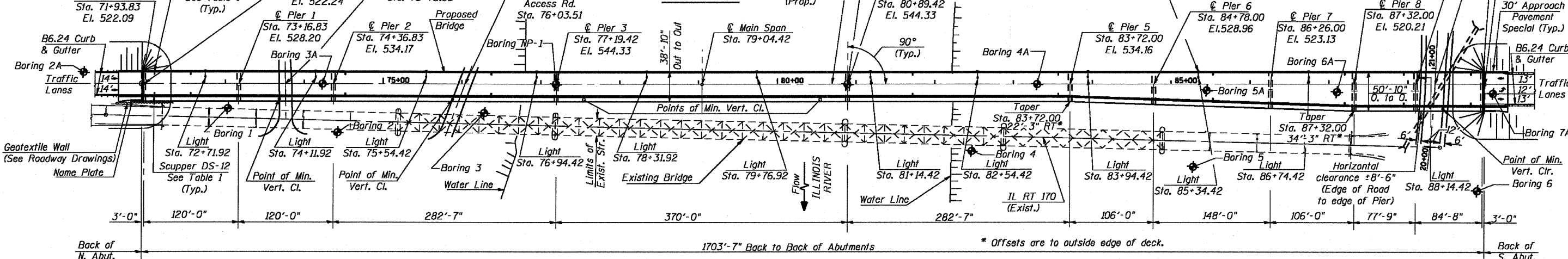
DESIGN SCOUR TABLE

Design Scour Elevation (ft)	North Abut.	Pier 1	Pier 2	Pier 3	Pier 4	Pier 5	Pier 6	Pier 7	Pier 8	Pier 9	South Abut.
	512.02	496.35	490.92	459.08	449.78	488.00	488.00	488.00	488.00	491.83	509.17

Contract # 66607



ELEVATION

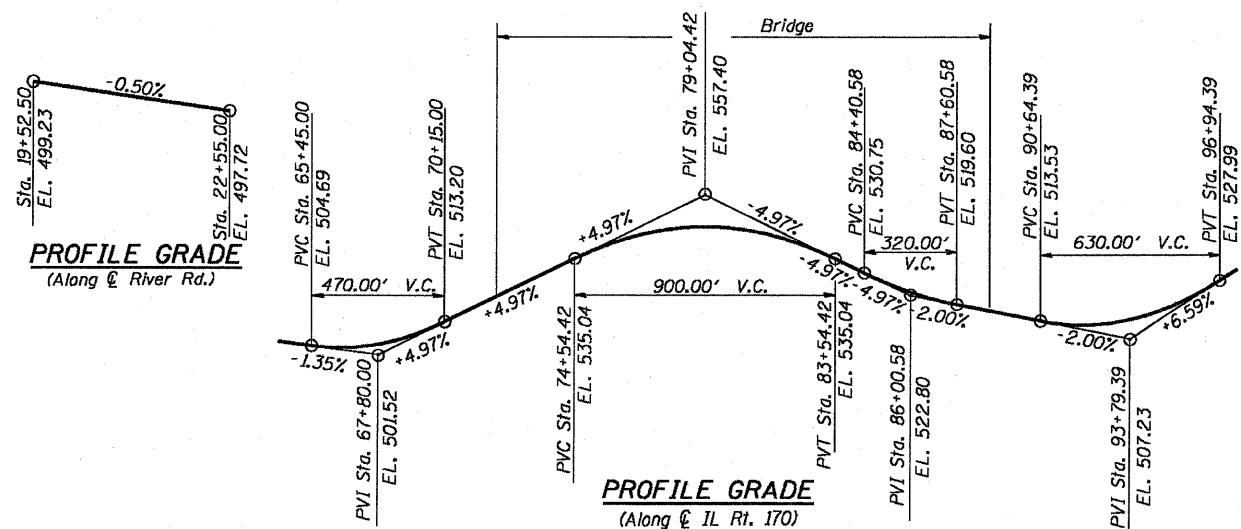


PLAN



TABLE 1

East Scupper DS-11 Location	West Scupper DS-12 Location
Sta. 72+10	Sta. 72+10
Sta. 72+56	Sta. 72+56
Sta. 74+52	Sta. 74+52
Sta. 76+37	Sta. 76+37
Sta. 81+72	Sta. 81+72
Sta. 83+57	Sta. 83+57
Sta. 85+53	Sta. 85+53
Sta. 87+20	Sta. 87+20
Sta. 87+95	Sta. 87+95
Sta. 88+80	Sta. 88+80



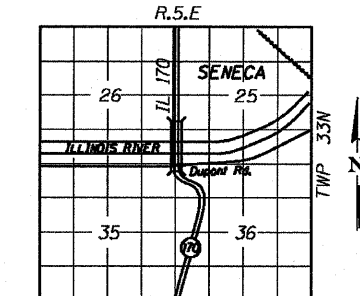
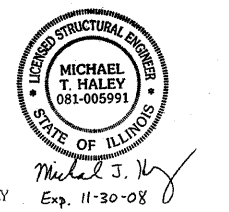
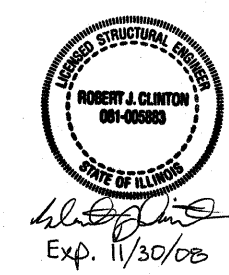
DESIGN SPECIFICATIONS
2002 AASHTO
Standard Specifications for Highway Bridges
1991 AASHTO Guide Specifications and Commentary
for Vessel Collision Design of Highway Bridges

DESIGN STRESSES
f_c = 3,500 psi
f_s = 60,000 psi (reinforcement)
f_s = 50,000 psi (M270 Gr50W)
f_s = 70,000 psi (M270 Gr70W)

LOADING HS20-44
Allowance for Future
Wearing Surface 50 lb/sq. ft.

SEISMIC DATA
Seismic Performance Category (SPC) = A
Bedrock Acceleration Coefficient (A) = 0.04g
Site Coefficient (S) = 1.0

Notes:
1. For Waterway Information Table See Sheets S-2.
2. For Name Plate See Sheets S-2.



LOCATION SKETCH

GENERAL PLAN & ELEVATION
IL. 170 F.A.P. 786 OVER
ILLINOIS RIVER AT SENECA
PUBLIC WATERS
LA SALLE COUNTY, SECTION 109 BR
STATION 79+04.42
STRUCTURE NO. 050-0246

APPROVED
FOR STRUCTURAL ADEQUACY ONLY
Exp. 11-30-08
Ralph E. Anderson
ENGINEER OF BRIDGES AND STRUCTURES

DESIGNED - CLS
CHECKED - RJC
DRAWN - JHR
CHECKED - RJC