

Notes:
 Space reinforcement in cap to miss anchor bolts.
 Pour steps monolithically with cap.
 For details of piles, see sheet B1 of 89.

STATE OF ILLINOIS
 DEPARTMENT OF TRANSPORTATION

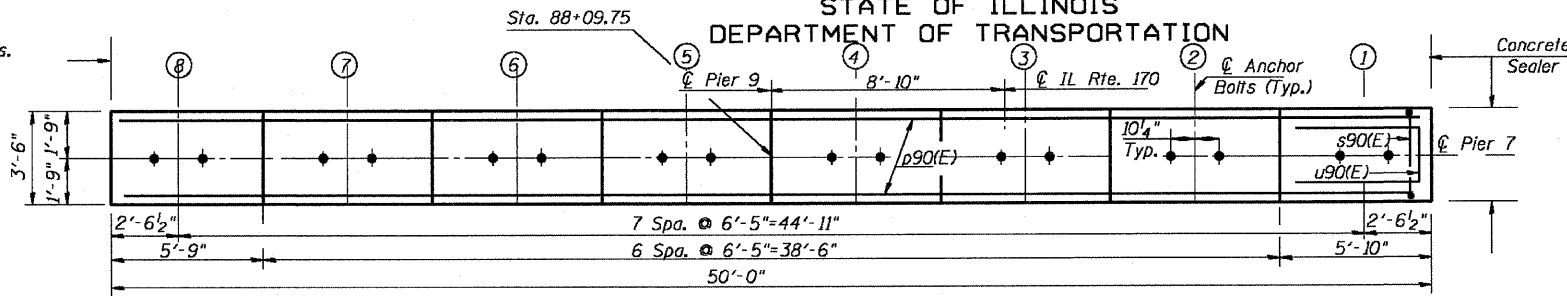


F.A.P. ROUTE NO.	SECTION	COUNTY	SHEET NO.	SHEET NO.
786	109 BR	La Salle	351	280
FED. ROAD DIST. NO. 7		ILLINOIS		FED. AID PROJECT

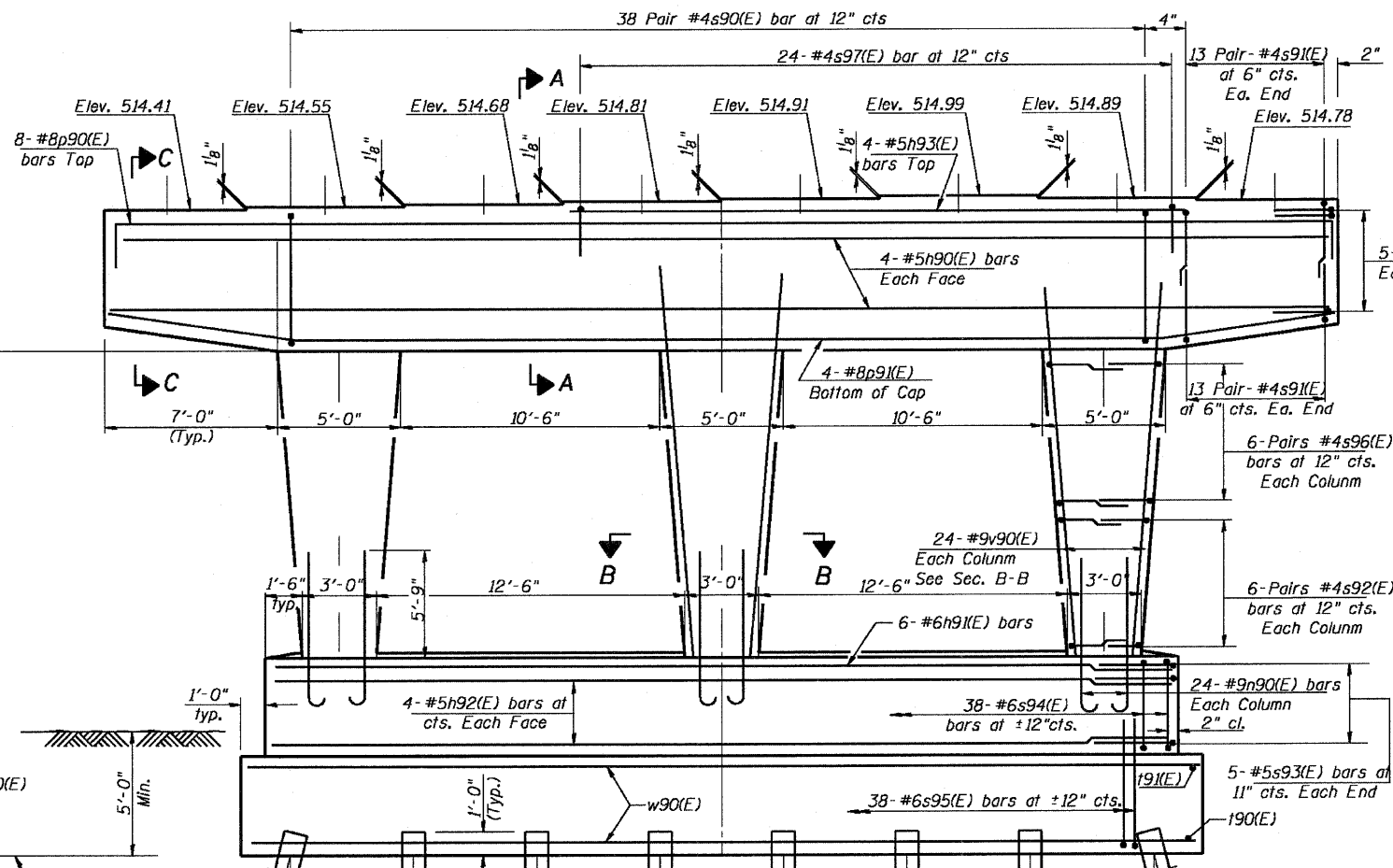
Contract # 66607

BILL OF MATERIAL

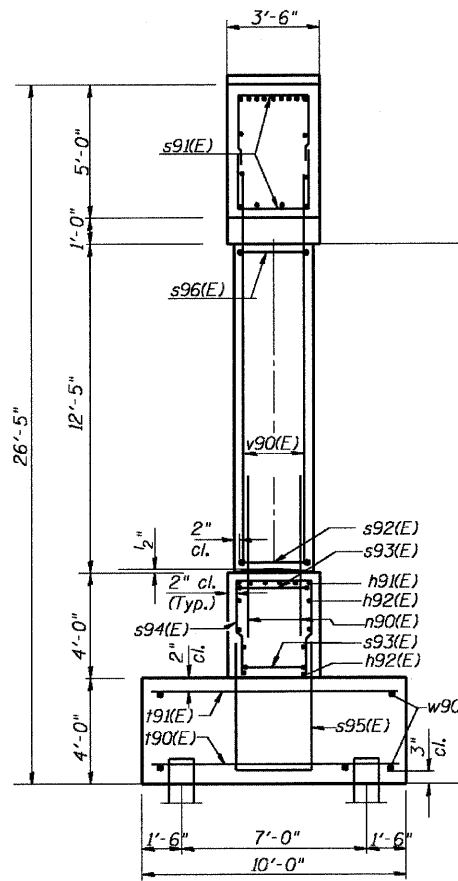
Bar	No.	Size	Length	Shape
h90(E)	8	#5	49'-8"	
h91(E)	6	#6	36'-8"	
h92(E)	8	#5	36'-8"	
h93(E)	4	#5	25'-4"	
n90(E)	72	#9	11'-0"	
p90(E)	8	#8	52'-4"	
p91(E)	4	#8	49'-10"	
s90(E)	76	#4	16'-9"	
s91(E)	104	#4	9'-8"	
s92(E)	36	#4	8'-0"	
s93(E)	10	#5	7'-6"	
s94(E)	38	#6	10'-10"	
s95(E)	38	#6	15'-10"	
s96(E)	36	#4	10'-0"	
s97(E)	24	#4	8'-2"	
u90(E)	10	#6	8'-10"	
v90(E)	72	#9	15'-9"	
w90(E)	30	#8	39'-8"	
Structure Excavation	Cu. Yd.	124		
Concrete Structures	Cu. Yd.	132		
Reinforcement Bars, Epoxy Coated	Pound	18,020		
Furnishing Steel Piles HP 12x74	Foot	525		
Driving Piles	Foot	525		
Test Pile	Each	1		
Pile Shoes	Each	16		



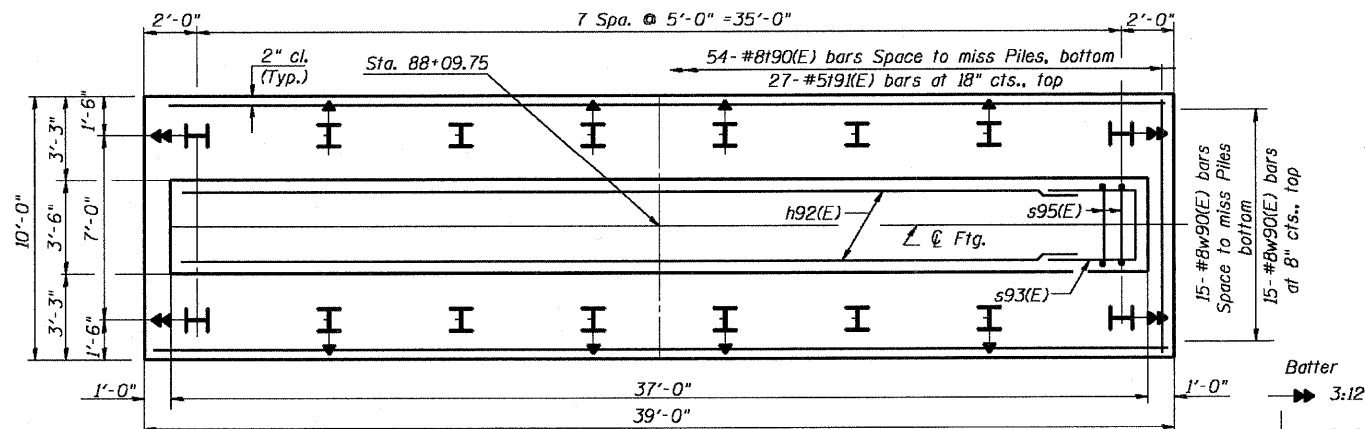
TOP PLAN



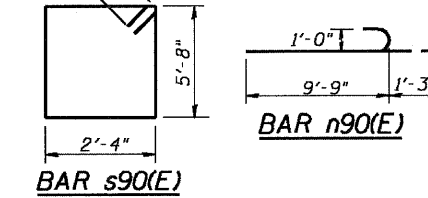
PIER 9 ELEVATION
 (Looking North)



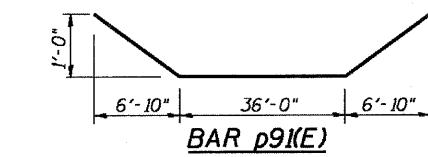
END VIEW



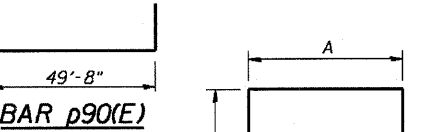
FOOTING PLAN



BAR s90(E)



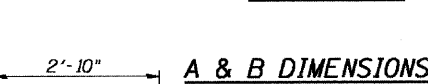
BAR p91(E)



BAR p90(E)



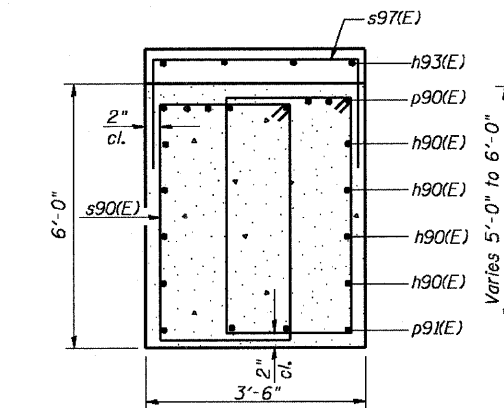
BARS sxx(E)



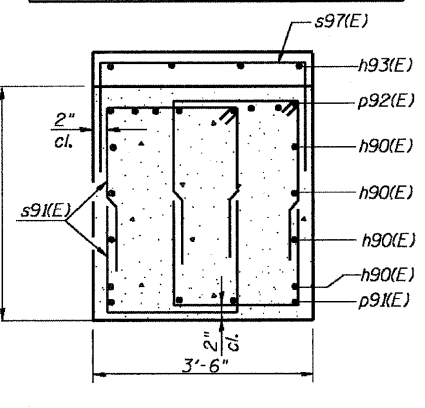
BAR u90(E)

A & B DIMENSIONS

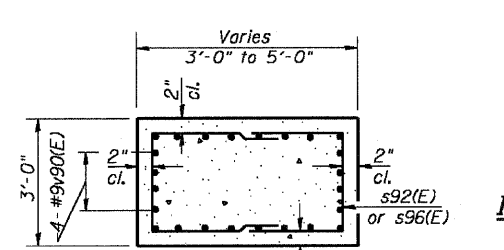
Bar	A	B
s91(E)	2'-4"	3'-8"
s92(E)	2'-8"	2'-8"
s93(E)	3'-2"	2'-2"
s94(E)	3'-2"	3'-10"
s95(E)	3'-2"	6'-4"
s96(E)	2'-8"	3'-8"
s97(E)	3'-2"	2'-6"



SECTION A-A



SECTION C-C



SECTION B-B

PILE DATA

Type: HP12x74 with Pile Shoes
 Nominal Required Bearing = 589K
 Allowable Resistance Available = 196K
 Est. Length: 35'
 No. Production Piles: 15
 No. Test Piles: 1

DESIGNED - RJC
CHECKED - DEV
DRAWN - JHR
CHECKED - DEV

PIER 9
 IL. 170 F.A.P. 786 OVER
 ILLINOIS RIVER AT SENECA
 PUBLIC WATERS
 LA SALLE COUNTY, SECTION 109 BR
 STATION 79+04.42
 STRUCTURE NO. 050-0246