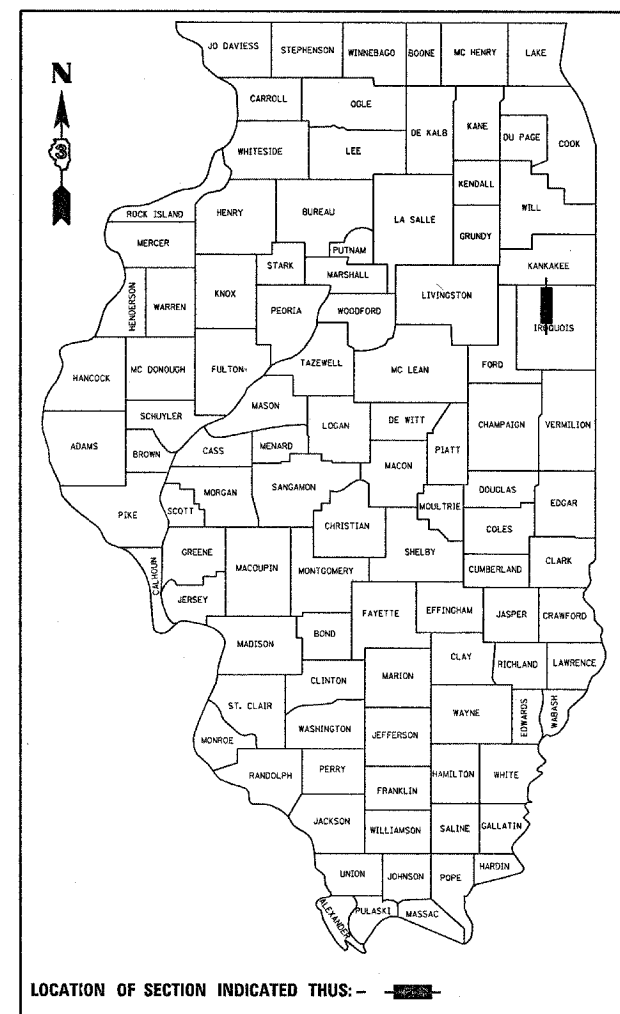


| | | | | |
|---------------------|----------|--------------------|--------------|-----------|
| F.A. RTE. | SECTION | COUNTY | TOTAL SHEETS | SHEET NO. |
| 317 | 36 BR | IROQUOIS | 29 | 1 |
| FED. ROAD DIST. NO. | ILLINOIS | CONTRACT NO. 66646 | | |

P93-010-07
D93-038-06



HIGHWAY DESIGNATION: RURAL (MAJOR) COLLECTOR

ADT 2008 - 2150
PV - 92.1% SU - 6.0% MU - 1.9%

STATE OF ILLINOIS
DEPARTMENT OF TRANSPORTATION
DIVISION OF HIGHWAYS

SUBMITTED 11-1 20 07

[Signature]
DEPUTY DIRECTOR OF HIGHWAYS, REGION ENGINEER

December 7, 20 07

[Signature]
ENGINEER OF DESIGN AND ENVIRONMENT

December 7, 20 07

[Signature]
DIRECTOR OF HIGHWAYS, CHIEF ENGINEER

PRINTED BY THE AUTHORITY
OF THE STATE OF ILLINOIS

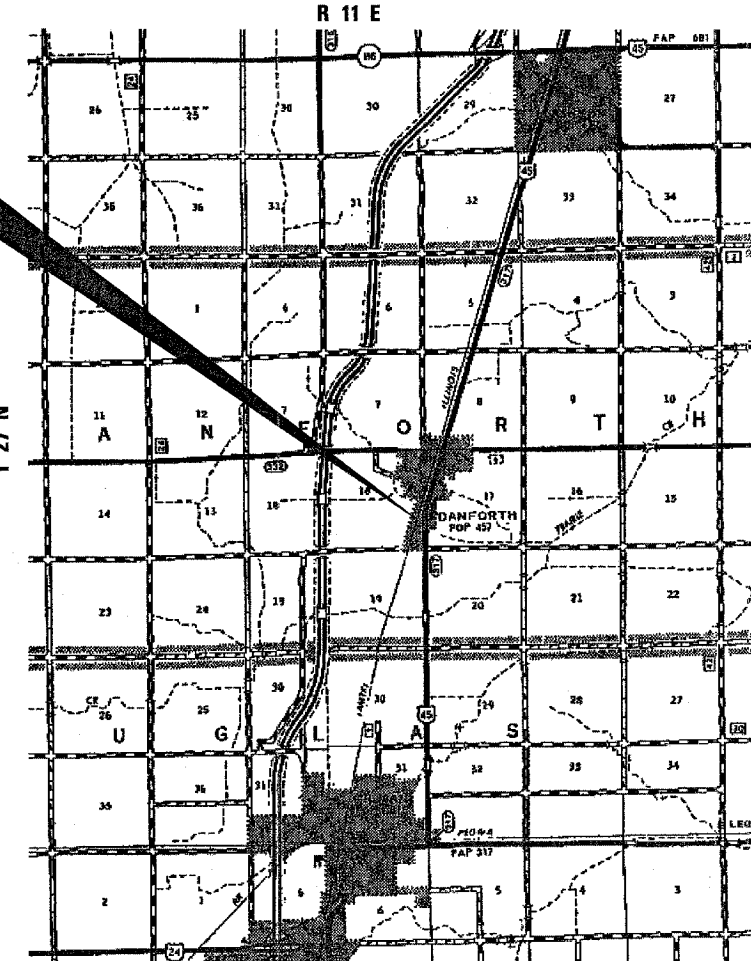
STATE OF ILLINOIS
DEPARTMENT OF TRANSPORTATION
DIVISION OF HIGHWAYS

**PROPOSED
HIGHWAY PLANS**

FAS ROUTE 317 (US 45)
SECTION 36 BR
PROJECT BRS-0317(110)
IROQUOIS COUNTY

C93-064-06

REMOVE AND REPLACE S.N. 038-0038 WITH A
DOUBLE 11' X 9' BOX CULVERT S.N. 038-2017



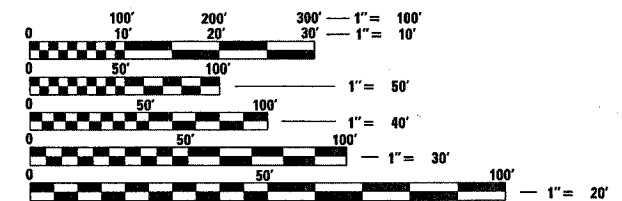
STA. 1118+70 TO STA. 1121+65
EXISTING S.N. 038-0038
PROPOSED S.N. 038-2017

GROSS AND NET LENGTH OF NEED = 295 FT = .056 MI.

INDEX OF SHEETS

- 1 COVER SHEET
- 2 GENERAL NOTES & STANDARDS
- 3-4 SUMMARY OF QUANTITIES
- 5 TYPICAL SECTIONS
- 6 SCHEDULES OF QUANTITIES
- 7 ALIGNMENT SHEET
- 8 PLAN & PROFILE
- 9 REMOVAL, LANDSCAPING AND PAVEMENT MARKING PLAN
- 10 GUARDRAIL PLAN SHEET
- 11 RIGHT-OF-WAY PLAN
- 12 DETOUR PLAN SHEET
- 13-17 CULVERT AND WINGWALL PLANS
- 18 BORING LOG SHEET
- 19-24 EXISTING BRIDGE SHEETS
- 25 CADD DETAIL SHEET
- 26-29 ILL 116 CROSS SECTIONS

FOR HIGHWAY STANDARDS,
SEE SHEET NO. 2



FULL SIZE PLANS HAVE BEEN PREPARED USING STANDARD
ENGINEERING SCALES. REDUCED SIZED PLANS WILL NOT
CONFORM TO STANDARD SCALES. IN MAKING MEASUREMENTS
ON REDUCED PLANS, THE ABOVE SCALES MAY BE USED.

J.U.L.I.E.
JOINT UTILITY LOCATION INFORMATION FOR EXCAVATION
1-800-892-0123
OR 811

PROJECT ENGINEER SCOTT A. FERGUSON
PROJECT MANAGER DAVE BROVIK

CONTRACT NO. 66646