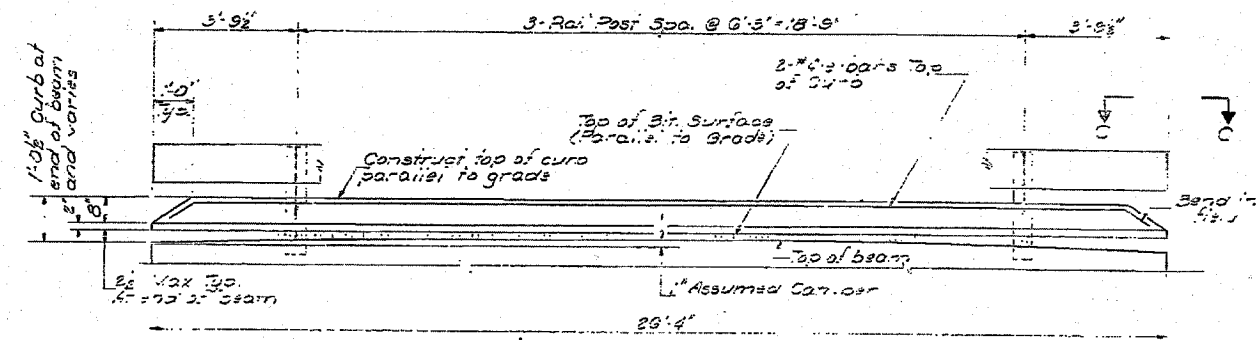


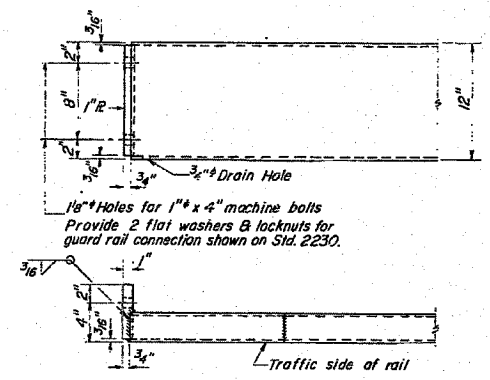
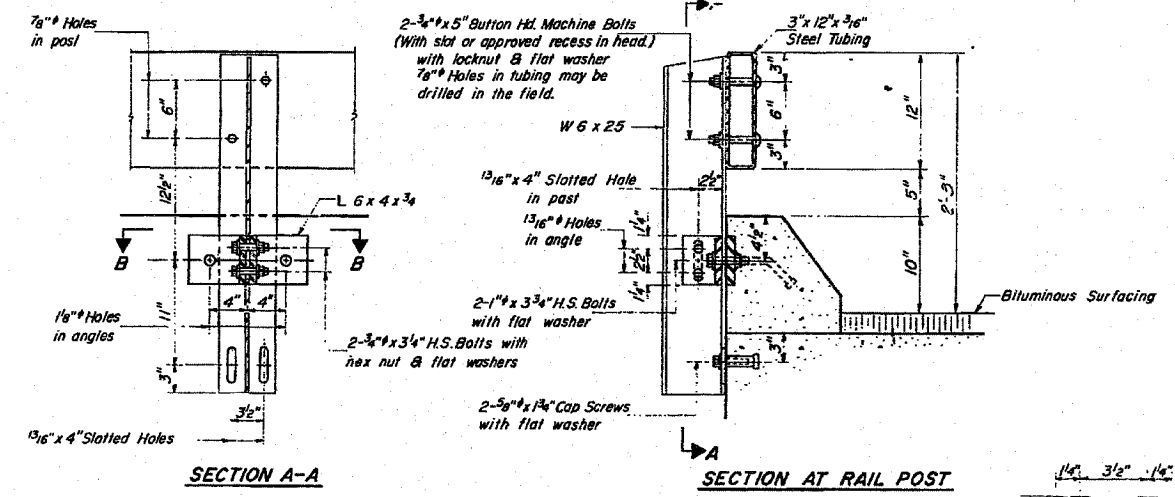
STATE OF ILLINOIS
DEPARTMENT OF TRANSPORTATION

SECTION	NO.	TOTAL SHEETS	SHEET NO.
36 BR	2	5	5

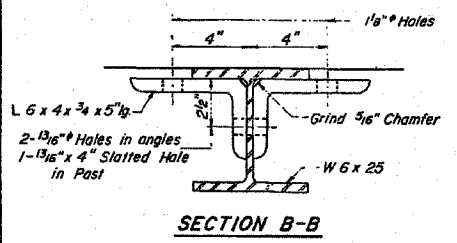
SHEETS



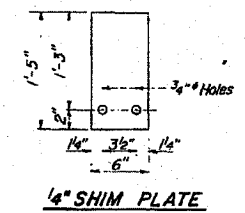
ELEVATION
(Showing inside face of rail.)



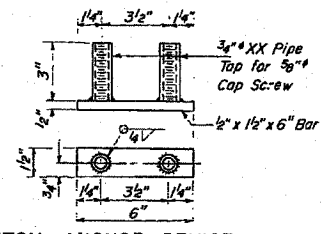
END OF RAIL DETAILS



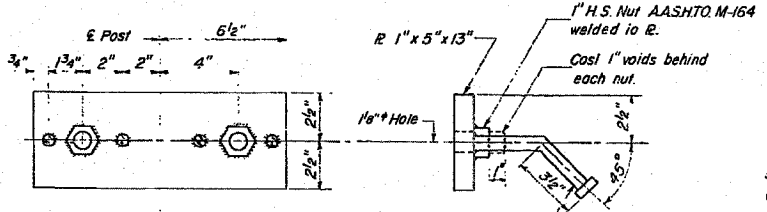
SECTION B-B



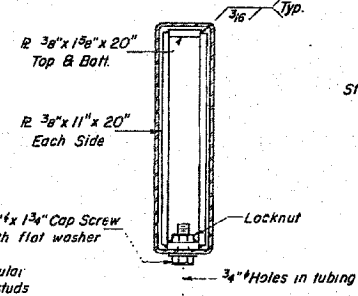
4" SHIM PLATE



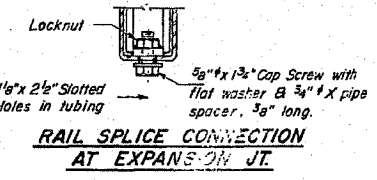
BOTTOM ANCHOR DEVICE



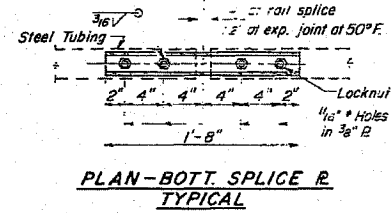
TOP ANCHOR DEVICE



SECTIONS AT RAIL SPLICE



RAIL SPLICE CONNECTION AT EXPANSION JOINT



PLAN-BOTT. SPLICE R TYPICAL

NOTES

Hollow structural steel tubing shall conform to the requirements of A.S.T.M. designation A-500 Grade B or A-501 Structural Steel Tubing.

All other steel shapes and plates shall conform to the requirements of AASHTO M-183 except posts shall conform to AASHTO M-188.

Bolts, cap screws, and nuts shall conform to the requirement of ASTM designation A-307 except for high strength bolts, nuts and washers noted which shall conform to AASHTO M-154.

All bolts, nuts, cap screws, washers, and lock washers shall be galvanized in accordance with AASHTO M-232.

All posts, railing, rail splices, anchor devices and angles shall be galvanized after shop fabrication in accordance with AASHTO M-11 and ASTM A-385. Galvanized rail shall not be painted.

Railing shall be in accordance with Section 508 of the Standard Specifications, except as noted, and shall be paid for at the contract unit price per lineal foot for STEEL RAILING, TYPE T.

All field drilled holes shall be coated with an approved zinc rich paint before erection.

The lower portion of the post flange in contact with concrete shall receive two coats of asphalt paint conforming to Section 714.08 Type B or place 1/2 inch fabric bearing pad between the post and concrete.

The 3/4 inch high strength bolts used to connect the 6 x 4 x 3/4 angles to the post shall be tightened in accordance with Article 507.04(g)(3) of the Standard Specifications. The 1/4 inch high strength bolts connecting the angles to the concrete shall be tightened to a snug fit and given an additional 1/4 turn.

For multi-span bridges, sufficient 1/2 inch x 5 inch x 1/2 inch galvanized steel shims shall be provided to align rail between adjacent spans. Care incident to Steel Railing.

CURB & RAIL
BILL OF MATERIAL

Bar	No.	Size	Length	Shape
e	2	#4	22'-0"	
Reinforcement Bars			Lbs.	75
Class X Concrete			Cu. Yds.	5
Steel Railing, Type S			Lin. Ft.	25

TYPE S
STEEL RAILING

SEE PLAN SECTION 36 BR
FOR DETAILS
DATE: 11-19-07

DESIGNED	J. E. ...	EXAMINED	FEB 22 1977
CHECKED	J. E. ...	PASSED	
DRAWN	J. SCHMIDT	APPROVED	
CHECKED	J. E. ...	DIRECTOR OF HIGHWAYS	

R-24 B-1-76 (6'-5" Maximum Post Spacing)

FILE NAME = c:\projects\ed03806\sheeta.dgn

USER NAME = Ferguson	DESIGNED -	REVISED -
PLOT SCALE = 20.0000 / IN.	DRAWN -	REVISED -
PLOT DATE = Nov 01, 2007 - 07:19:59 AM	CHECKED -	REVISED -
	DATE -	REVISED -

STATE OF ILLINOIS
DEPARTMENT OF TRANSPORTATION

EXISTING BRIDGE PLANS

SCALE: SHEET NO. OF SHEETS STA. TO STA.

F.A.S. RTE.	SECTION	COUNTY	TOTAL SHEETS	SHEET NO.
317	36 BR	IRROQUOIS	29	21
STA. 1117+00 TO STA. 1123+00	CONTRACT NO. 66646			
FED. ROAD DIST. NO.	ILLINOIS FED. AID PROJECT			