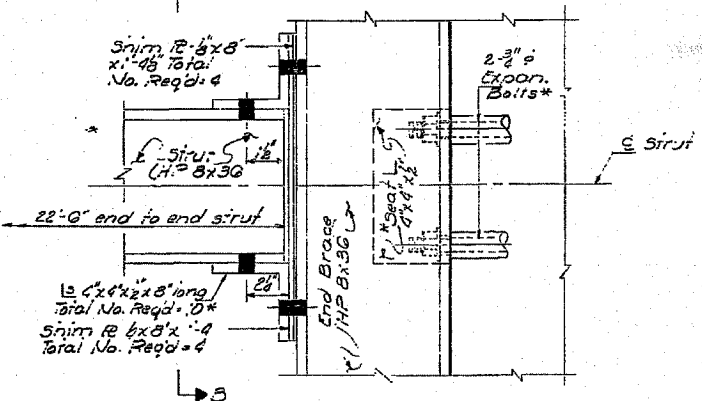
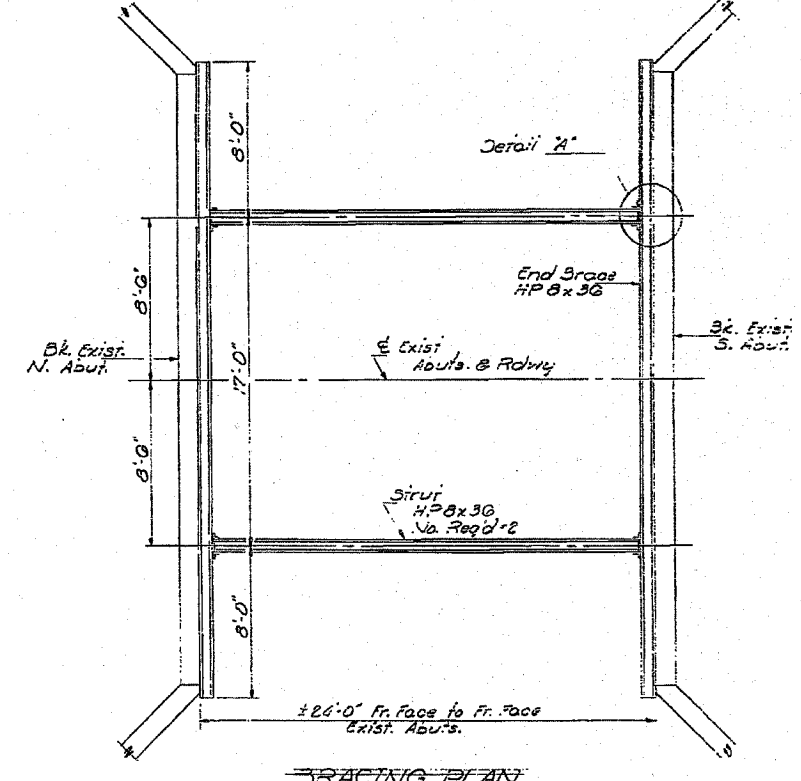
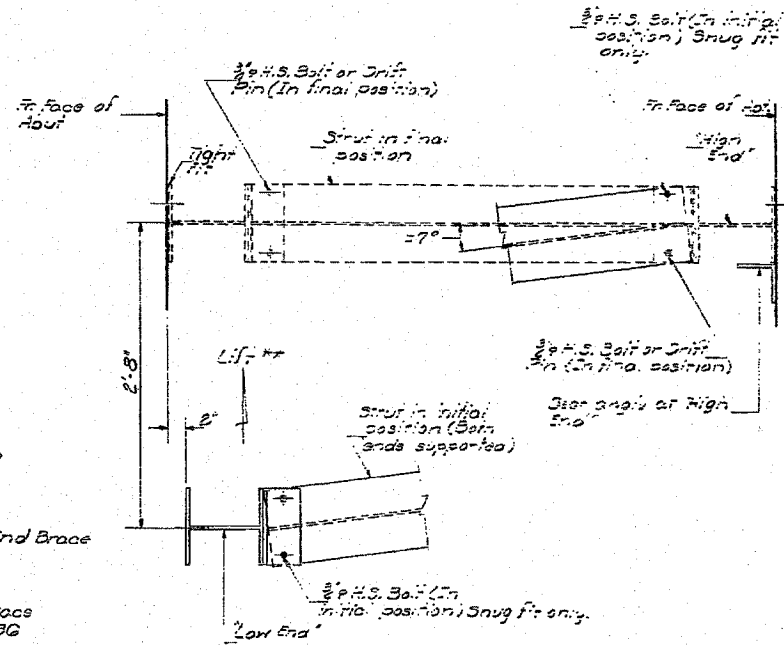
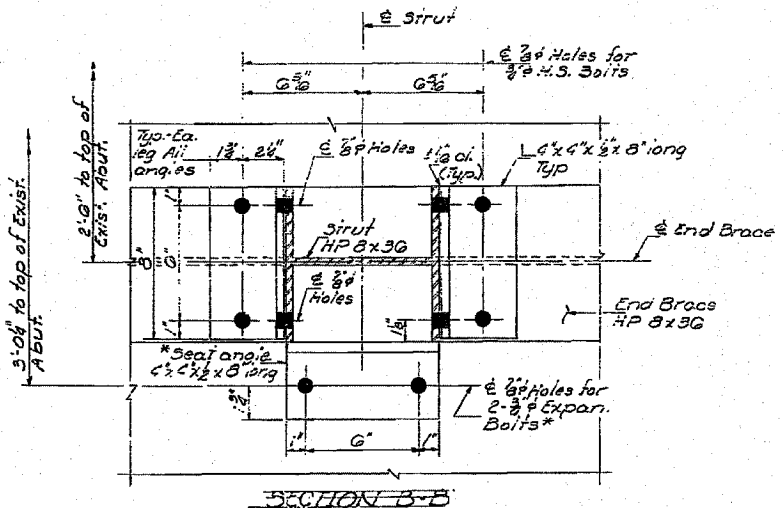
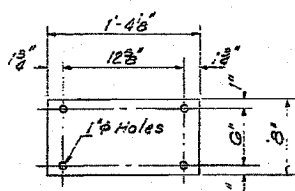
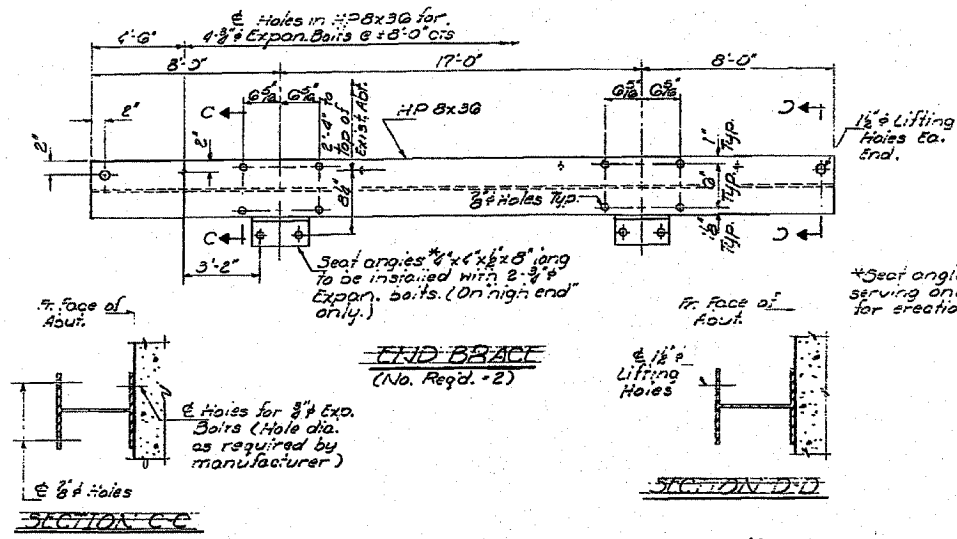


STATE OF ILLINOIS
DEPARTMENT OF TRANSPORTATION

DATE	DESIGN	CHECK	TOTAL SHEETS	SHEET NO.
11-25	36BR	Iroquois	14	11
SHEET NO. 6				
6 SHEETS				



After High End is anchored Low End shall continue to be lifted until siruts are approx. horizontal, and both end braces have a tight contact with abutment faces, then anchor Low End, and tighten bolts. Approximate lift required: 1/4" at each end of each brace. (4 total). See Art. 507.04 (1) of Std. Spec. concerning use of drift pins.

NOTES:
Bracing to be placed prior to removal of existing superstructure, and removed following installation of R.C. Deck Beams.
All materials shown on this sheet are last incidents to removal of existing superstructure, and shall remain the property of the contractor.
All expansion bolts shall be anchored in sound concrete. Repair holes with mortar after removal of bolts.
Contractor may substitute alternative bracing system with the prior written approval of the Engineer.

BRACING DETAILS
S.B.T. RT-25 SEC. 36DR
IROQUOIS COUNTY
STA. 1120+17.00

DESIGNED	John Edwards	EXAMINED	Feb 22 1977
CHECKED	John Scheller	PASSED	
DRAWN	J. SCHNELLER	APPROVED	
CHECKED	J.S.		