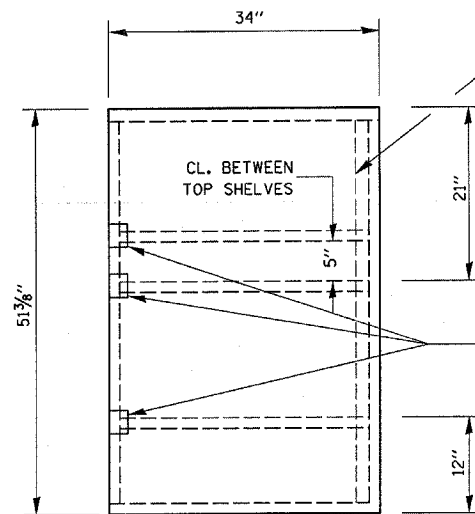


SHELF SIDE VIEW

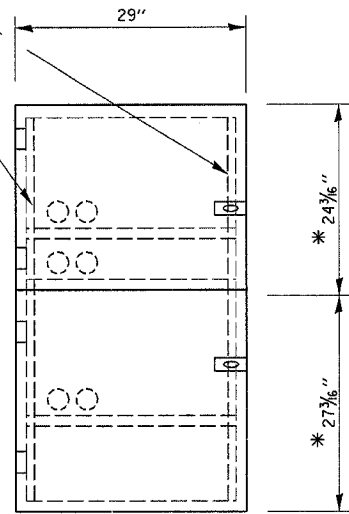


SHELF FRONT VIEW

1/2" X 1 1/2" FLAT STOCK WELD TO FORM DOOR FRAME AND ALSO AROUND PERIMETER OF EACH DOOR.



SIDE VIEW



FRONT VIEW

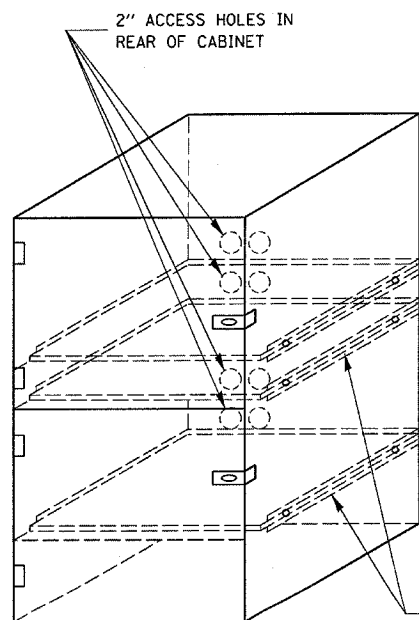
* WELD BACKSTOP TO MAINTAIN 2" CLEARANCE BETWEEN SHELF AND CABINET

* ALLOWS FOR 1/8" CLEARANCE AT TOP AND BOTTOM OF CABINET AND BETWEEN DOORS.

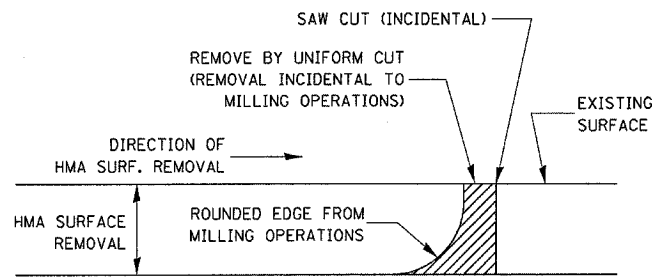
NOTES:

1. USE 16 GAUGE STEEL FOR CABINET.
2. THE TOP SHELF SHALL SLIDE IN OR OUT WITH THE TOP DOOR OPEN.
3. ALL HINGES AND HASPS WILL BE WELDED TO THE CABINET.
4. ALL EDGES SHALL BE GROUND SMOOTH.
5. TWO (2" DIA.) ACCESS HOLES WILL BE REQUIRED FOR EACH SHELF.
6. CABINET SHALL BE PAINTED WITH TWO COATS OF FLAT PAINT.
7. 2 EACH MATCHING KEY PADLOCKS, WITH 3 KEYS PROVIDED, MASTER MODEL 3 T OR EQUIVALENT.
8. 4 EACH PLAIN STEEL, NON-REMOVABLE PIN, NO HOLE 4" X 4" SQUARE CORNER HINGES TO BE WELDED ON.
9. 2 EACH EXTRA HEAVY, PLAIN STEEL, FIXED STAPLE, NO HOLE, 7/4" HASPS TO BE WELDED ON.

FLAT STOCK DIMENSIONS VARY DEPENDING ON TYPE OF ROLLER ASSEMBLY



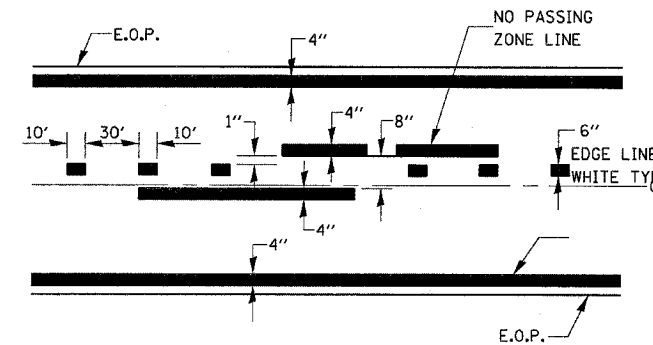
LOCKABLE COMPUTER CABINET



NOTE:

WHEN MILLING OPERATIONS PRODUCE A ROUNDED EDGE, THEN A SAW CUT SHALL BE USED TO MANUFACTURE A PERPENDICULAR EDGE AS SHOWN IN THE DETAIL. THE ENGINEER SHALL BE THE SOLE JUDGE CONCERNING THE USE OF THIS DETAIL

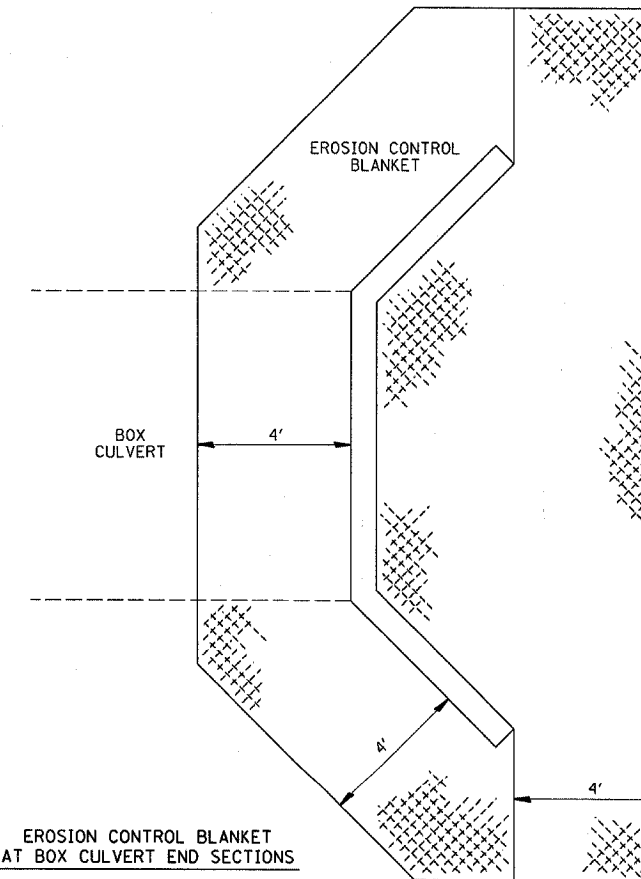
HMA DETAIL AT BUTT JOINTS



CENTERLINE & NO PASSING ZONE LINES - YELLOW

(SEE TYPICAL SECTIONS)

PAVEMENT MARKING



EROSION CONTROL BLANKET AT BOX CULVERT END SECTIONS

FILE NAME = c:\projects\ed03886\sheet.dgn	USER NAME = ferguson	DESIGNED -	REVISED -	STATE OF ILLINOIS DEPARTMENT OF TRANSPORTATION	DETAIL SHEET	F.A.S. RTE. 317	SECTION 36 BR	COUNTY IROQUOIS	TOTAL SHEETS 29	SHEET NO. 25	
	PLOT SCALE = 20,000' / IN.	CHECKED -	REVISED -			SCALE:	SHEET NO. OF SHEETS	STA. TO STA.	STA. 1117+00 TO STA. 1123+00	CONTRACT NO. 66646	
	PLOT DATE = Oct 31, 2007 - 03:54:00 PM	DATE -	REVISED -			FED. ROAD DIST. NO. ILLINOIS FED. AID PROJECT					