

F.A.I. RTE.	SECTION	COUNTY	TOTAL SHEETS	SHEET NO.
180	(06-1)	BUREAU	10	7
FED. ROAD DIST. NO.		ILLINOIS		



Illinois Department of Transportation  
Division of Highway District #8, Ottawa

**SOIL BORING LOG**

Page 1 of 1

Date 4/8/07

ROUTE FAI 180 (I-180) DESCRIPTION IL 180 over stream LOGGED BY Larry Myers

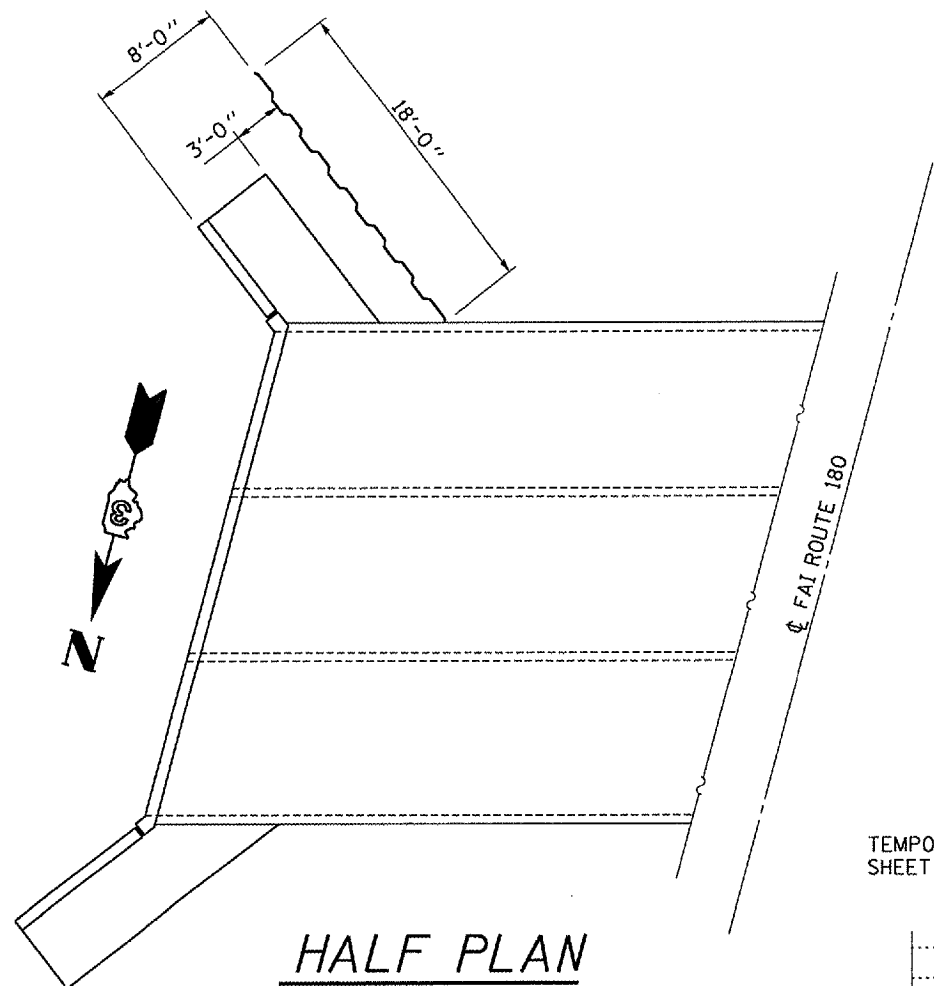
SECTION 06-1 LOCATION SE 1/4, SEC. 7, TWP. 16N, RNG. 10E

COUNTY Bureau DRILLING METHOD Hollow Stem Auger HAMMER TYPE CME Automatic

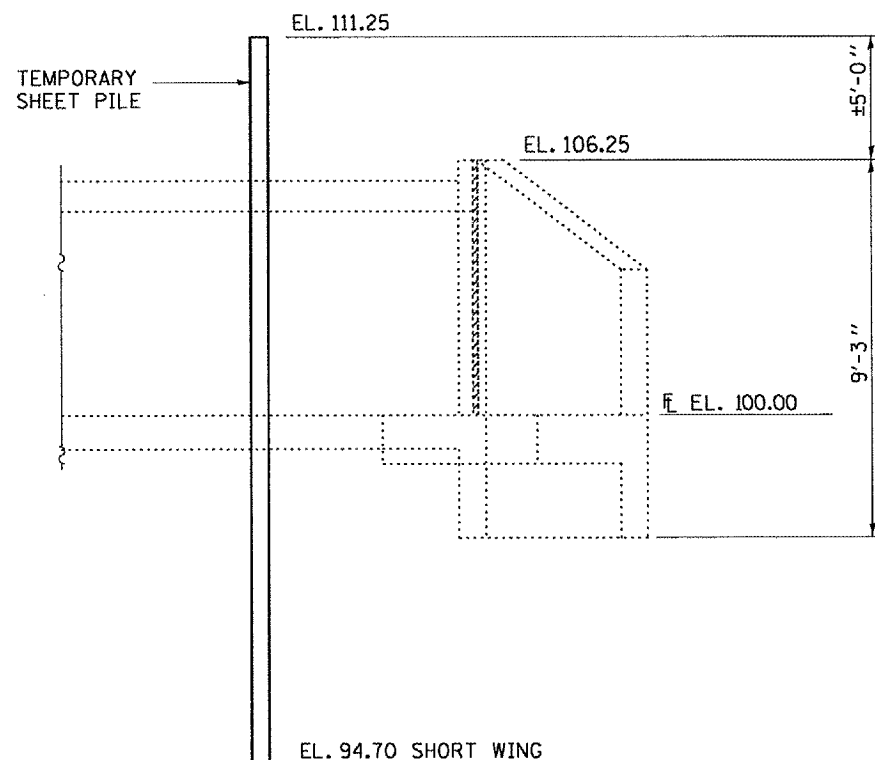
STRUCT. NO. 006-2000  
Station 157+00  
BORING NO. 2 SE Quad  
Station 157+24  
Offset 49.00ft Lt  
Ground Surface Elev. 89.39 ft

DEPTH (ft)	BLOW COUNT (16")	UNCONSOLIDATED QUANTITY (tsf)	MOISTURE (%)	DESCRIPTION	DEPTH (ft)	BLOW COUNT (16")	UNCONSOLIDATED QUANTITY (tsf)	MOISTURE (%)
				Surface Water Elev. 89.39 ft				
				Stream Bed Elev. _____ ft				
				Groundwater Elev.: First Encounter 73.9 ft				
				Upon Completion 68.4 ft				
				After _____ Hrs.				
				Augered, black, Silty Clay Loam- fill	17	25	>11.5	10.4
				Loam Till				
				* 19.5-21' sample interval- Max Rimac at 5% compression (continued)				
				Stiff, black, Silty Clay/Silty Clay Loam- fill with Gravel pieces and organics	4	5	2.0	24.1
				Hard, brown, Silty Clay Loam Till				
				* Elevation of CL of NBL set at 100'				
				Very stiff, brown and gray Silty Clay Loam Till- fill	-5	6	2.5	17.3
				Stiff, black, Silty Clay	4	4	2.0	26.5
				Very stiff, brown gray, Silty Clay Loam Till with layers of Sand and Gravel at 15.5'	-10	5	3.0	15.0
				Free Water at 15.5'				
					2	4	2.7	13.7
					6	6		
					-15	2	4	2.5
					12	12	B	15.6
				End of Boring				
				Hard, brownish gray, Silty Clay Loam Till	10	12	5.2	10.8
				* 19.5-21' sample interval- Max Rimac at 5% compression				
					16	16	S	
					-20	12		

The Unconfined Compressive Strength (UCS) Failure Mode is indicated by (B-Bulge, S-Shear, P-Penetrometer)  
The SPT (N value) is the sum of the last two blow values in each sampling zone (AASHTO T206) BBS, from 137 (Rev. 8-99)



HALF PLAN



ELEVATION

REQUIRED SECTION MODULUS = 2.2 IN /FT SHORT WING

BILL OF MATERIAL  
SHORT WING

TEMPORARY SHEET PILE	SO. FT.	338
----------------------	---------	-----

REVISIONS	NAME	DATE

ILLINOIS DEPARTMENT OF TRANSPORTATION  
TEMPORARY SHEET PILE  
FAI ROUTE 180 (I-180) SECTION (06-1)  
STA. 157+00  
BUREAU COUNTY  
S.N. 006-2000

Date: 10/30/2007  
c:/projects/cmain08/cm316/details.dgn