

STANDARDS	
000001-05	STANDARD SYMBOLS, ABBREVIATIONS AND PATTERNS
701101-01	OFF-ROAD OPERATIONS MULTILANE, 4.5 m (15') TO 600 mm (24") FROM PAVEMENT EDGE
701106-01	OFF-ROAD OPERATIONS, MULTILANE, MORE THAN 4.5 m (15') AWAY
701400-02	APPROACH TO LANE CLOSURE, FREEWAY/EXPRESSWAY
701401-04	LANE CLOSURE, FREEWAY/EXPRESSWAY
701411-04	LANE CLOSURE, MULTILANE, AT ENTRANCE OR EXIT RAMP FOR SPEEDS P 45 MPH
701901	TRAFFIC CONTROL DEVICES

**INDEX OF SHEETS**

- 1 COVERSHEET
- 2 GENERAL NOTES, SUMMARY OF QUANTITIES & TYPICAL
- 3-6 SCHEDULES

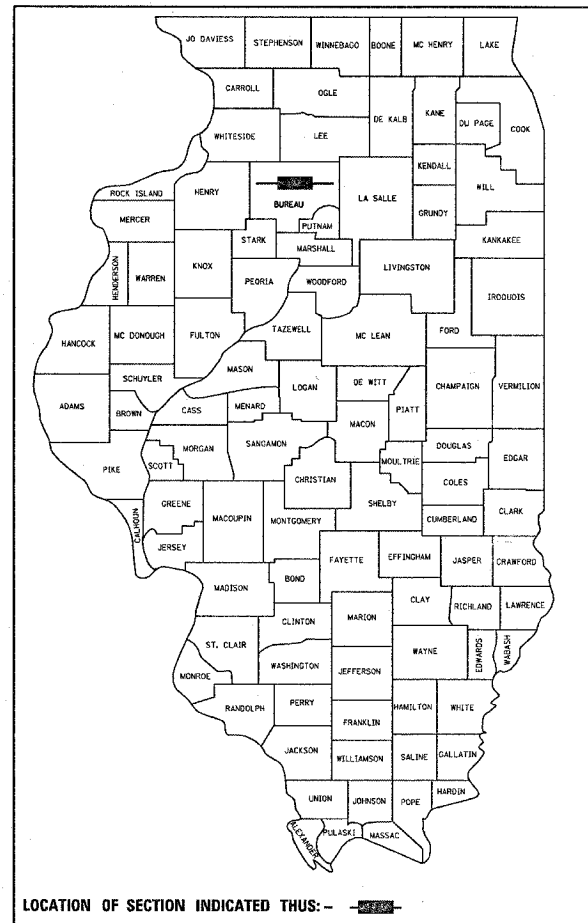
**STATE OF ILLINOIS  
DEPARTMENT OF TRANSPORTATION  
DIVISION OF HIGHWAYS  
PROPOSED  
HIGHWAY PLANS**

**FAI ROUTE I-80  
SECTION D3 INTERSTATE SAFETY 2008-1  
PROJECT: ACHSIP-080-1(142)035  
BUREAU COUNTY**

C - 93 - 019 - 08

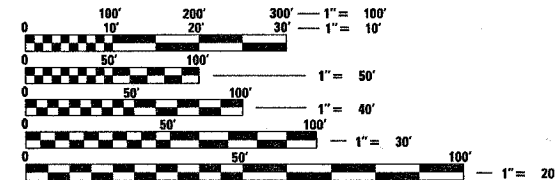
**PROJECT DESCRIPTION  
HENRY COUNTY LINE TO LASALLE COUNTY LINE  
TREE REMOVAL THROUGHOUT BUREAU COUNTY**

F.A.I. RTE.	SECTION	COUNTY	TOTAL SHEETS	SHEET NO.
80	*	BUREAU	6	1
FED. ROAD DIST. NO.		ILLINOIS	CONTRACT NO. 66739	
* D3 INTERSTATE SAFETY 2008-1 D-93-011-08				



**FUNCTION CLASSIFICATION**  
2005 ADT = 22,950  
P.V. = 59.2% S.U. = 4.4% M.U. = 36.4%

MICROFILMED \_\_\_\_\_  
REEL NUMBER \_\_\_\_\_  
AWARDED \_\_\_\_\_  
RESIDENT ENGINEER \_\_\_\_\_  
AS BUILT CHANGES WERE MADE  
ON THE FOLLOWING SHEETS \_\_\_\_\_

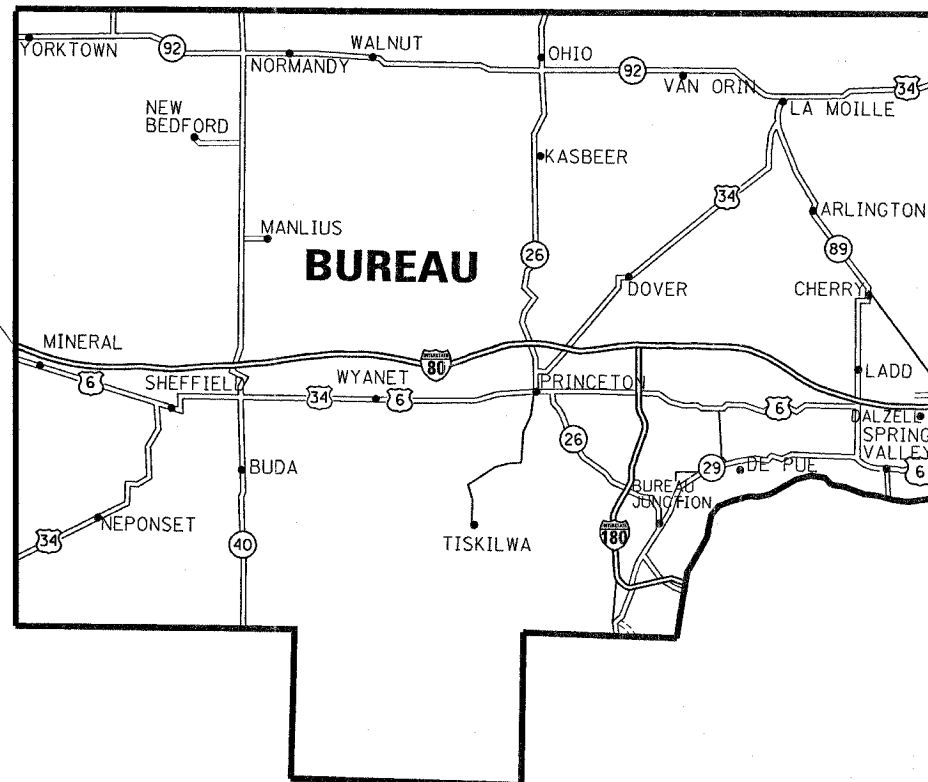


FULL SIZE PLANS HAVE BEEN PREPARED USING STANDARD ENGINEERING SCALES. REDUCED SIZED PLANS WILL NOT CONFORM TO STANDARD SCALES. IN MAKING MEASUREMENTS ON REDUCED PLANS, THE ABOVE SCALES MAY BE USED.

**J.U.L.I.E.**  
JOINT UTILITY LOCATION INFORMATION FOR EXCAVATION  
1-800-892-0123  
OR 811

**PROJECT ENGINEER JOE KANNEL  
PROJECT MANAGER PATRICK BRABOY  
DISTRICT 3 NO. (815) 434-6131  
CONTRACT NO. 66739**

BEGIN PROJECT @  
HENRY COUNTY LINE



END PROJECT @  
LASALLE COUNTY LINE

LOCATION MAP  
NOT TO SCALE

NET LENGTH = 37.04 MI

PLOT DATE = Oct 24, 2007 - 02:10:51 PM  
FILE NAME = c:\pco\jects\ed01108\detail.s.dgn  
PLOT SCALE = 50,0000 / IN.  
USER NAME = braboypp

STATE OF ILLINOIS  
DEPARTMENT OF TRANSPORTATION  
DIVISION OF HIGHWAYS

SUBMITTED \_\_\_\_\_ 20 \_\_\_\_\_

*George F. Egan*  
DEPUTY DIRECTOR OF HIGHWAYS, REGION ENGINEER  
December 7, 20 07

*Eric E. Harrel*  
INTERIM ENGINEER OF DESIGN AND ENVIRONMENT  
December 7, 20 07

*Christine M. Reed*  
DIRECTOR OF HIGHWAYS, CHIEF ENGINEER

**PRINTED BY THE AUTHORITY  
OF THE STATE OF ILLINOIS**

**GENERAL NOTES**

SEEDING SHALL NOT BE PERMITTED AT ANY TIME WHEN THE GROUND IS FROZEN, WET, OR IN AN UNTILLABLE CONDITION. LOCATIONS TO BE SEEDED WILL BE DETERMINED BY THE ENGINEER.

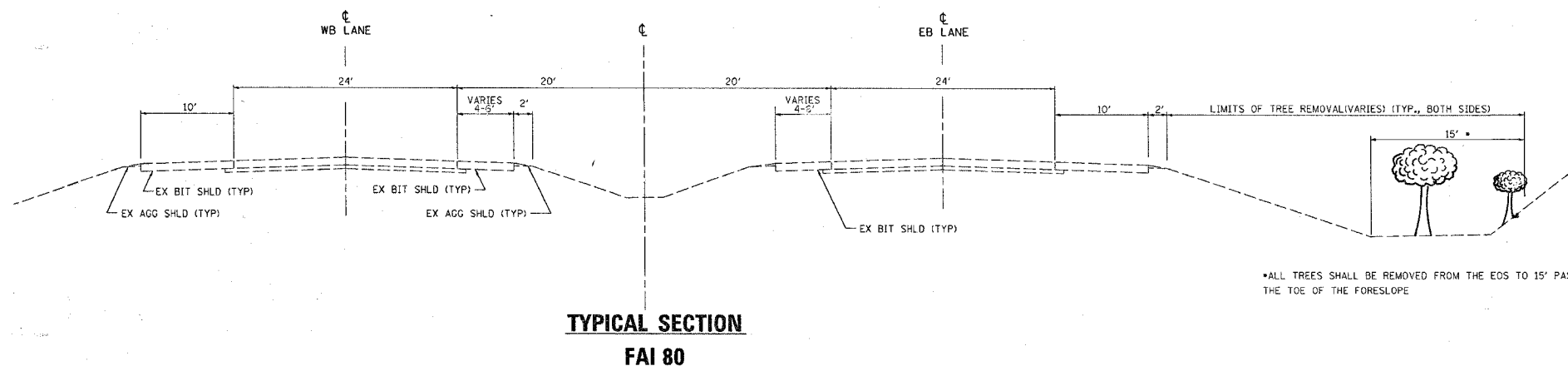
ONLY THOSE TREES DESIGNATED BY THE ENGINEER OR LISTED IN THE TREE REMOVAL SCHEDULE SHALL BE REMOVED. THE CONTRACTOR SHALL PROTECT ALL REMAINING TREES FROM DAMAGE DUE TO HIS OPERATIONS.

ABANDONED UNDERGROUND UTILITIES THAT CONFLICT WITH CONSTRUCTION SHALL BE DISPOSED OF OUTSIDE THE LIMITS OF THE RIGHT OF WAY ACCORDING TO ARTICLE 202.03 OF THE STANDARD SPECIFICATIONS AND AS DIRECTED BY THE ENGINEER. THIS WORK WILL NOT BE PAID FOR SEPARATELY, BUT SHALL BE INCLUDED IN THE COST OF EARTH EXCAVATION.

ANY REFERENCE TO A STANDARD IN THESE PLANS SHALL BE INTERPRETED TO MEAN THE EDITION AS INDICATED BY THE SUBNUMBER SHOWN IN THE LIST OF STANDARDS OR THE COPY INCLUDED IN THESE PLANS.

THE CONTRACTOR SHALL RESTORE WORK AREA AS SPECIFIED IN ARTICLE 104.06 IN THE STANDARD SPECIFICATIONS. ALL DAMAGE TO UNMOWED FIELDS SHALL BE SEEDED. RESTORATION OF THE WORK AREA SHALL NOT BE PAID FOR SEPERATELY, BUT SHALL BE INCLUDED IN THE COST OF TREE REMOVAL

SUMMARY OF QUANTITIES				
CODE NO.	ITEM	UNIT	TOTAL QUANTITY	90% FED. / 10% STATE
				Y004
<del>X0325889</del>	TREE REMOVAL (4 TO 15 UNITS DIAMETER) SPECIAL	UNIT	17263	17263
20100210	TREE REMOVAL (OVER 15 UNITS DIAMETER)	UNIT	3648	3648
67100100	MOBILIZATION	L SUM	1	1
70100800	TRAFFIC CONTROL AND PROTECTION, STANDARD 701401	L SUM	1	1
X7011420	TRAFFIC CONTROL AND PROTECTION, STANDARD 701411	LSUM	1	1
XX004090	SHRUB REMOVAL	EACH	500	500



STATE OF ILLINOIS  
DEPARTMENT OF TRANSPORTATION  
DISTRICT THREE

PREPARED BY: *[Signature]*  
DISTRICT STUDIES & PLANS ENGINEER

DATE: 10-24-07

EXAMINED BY: *[Signature]*  
DISTRICT CONSTRUCTION ENGINEER

*[Signature]*  
DISTRICT MATERIALS ENGINEER

*[Signature]*  
DISTRICT OPERATIONS ENGINEER

FILE NAME = c:\projects\ed01180\date\ls.dgn	USER NAME = braboypc	DESIGNED -	REVISED -	<b>STATE OF ILLINOIS DEPARTMENT OF TRANSPORTATION</b>	<b>GENERAL NOTES &amp; TYPICAL</b>	F.A.I. RTE. 80	SECTION *	COUNTY	TOTAL SHEETS 6	SHEET NO. 2	
	PLOT SCALE = 50.0000' / IN.	DRAWN -	REVISED -			SCALE: _____	SHEET NO. _____ OF _____ SHEETS	STA. _____ TO STA. _____	D3 INTERSTATE SAFETY 2008-1	BUREAU	CONTRACT NO. 66739
	PLOT DATE = Oct 24, 2007 - 02:11:02 PM	CHECKED -	REVISED -			FED. ROAD DIST. NO. _____ ILLINOIS FED. AID PROJECT					
		DATE -	REVISED -								

TREE REMOVAL					
STA	RT/ LT	NO.	IN	# Units 4 to 15	# Units 15 Plus
Henry/Bureau County Line = 0+00 = Begin Section 06-01					
1+67	LT	1	20		20
		1	12	12	
		2	10	20	
		2	8	16	
		3	6	18	
2+31	LT	1	6	6	
		1	8	8	
3+36	LT	1	8	8	
4+55	LT	3	6	18	
		1	10	10	
6+90	RT	1	27		27
7+43	RT	1	4	4	
		1	5	5	
		1	6	6	
16+97	RT	1	24		24
17+68	RT	1	13	13	
18+15	LT	6	6	36	
		2	8	16	
		1	14	14	
22+64	RT	4	6	24	
		2	5	10	
23+58	RT	1	10	10	
24+15	LT	1	8	8	
		1	9	9	
		1	12	12	
24+30	LT	3	10	30	
		1	7	7	
24+60	LT	1	7	7	
		2	10	20	
		1	12	12	
24+86	LT	1	10	10	
25+15	RT	3	5	15	
25+37	LT	1	5	5	
		2	6	12	
25+90	LT	1	9	9	
26+27	LT	1	7	7	
27+10	LT	1	6	6	
27+50	LT	1	6	6	
30+63	LT	2	5	10	
		3	6	18	
33+97	RT	1	5	5	
35+51	RT	2	6	12	
		1	12	12	
36+26	RT	1	4	4	
		1	5	5	
36+57	RT	1	9	9	
37+68	RT	3	4	12	
38+38		3	5	15	
		1	24		24
38+99	RT	1	20		20
39+08	LT	2	7	14	
		1	10	10	
40+42	RT	2	6	12	
		1	8	8	
40+87	RT	2	5	10	
		2	6	12	
41+27	RT	2	6	12	
		2	8	16	
42+05	RT	2	6	12	
		2	5	10	
42+86	RT	1	26		26
44+27	LT	3	5	15	
45+00	RT	1	30		30
50+94	LT	1	6	6	
		1	8	8	
		1	10	10	
51+95	LT	2	5	10	
52+85	LT	1	5	5	
53+45	LT	1	12	12	
56+58	RT	1	17		17
57+19	RT	2	6	12	
		3	5	15	
		5	4	20	
58+18	RT	2	5	10	
62+84	LT	1	4	4	
		1	5	5	

TREE REMOVAL					
STA	RT/ LT	NO.	IN	# Units 4 to 15	# Units 15 Plus
64+78	LT	4	4	16	
63+15	RT	3	5	15	
73+58	LT	3	6	18	
		1	8	8	
76+69	LT	1	8	8	
		1	10	10	
		2	6	12	
78+44	LT	3	5	15	
85+64	LT	1	10	10	
87+96	LT	3	8	24	
88+34	LT	1	7	7	
		1	8	8	
		3	10	30	
66+82	RT	1	4	4	
		1	5	5	
68+80	RT	2	6	12	
		1	8	8	
70+22	RT	3	6	18	
71+00	RT	1	6	6	
		3	8	24	
88+39	RT	2	6	12	
		2	8	16	
88+79	LT	1	12	12	
		5	10	50	
		1	7	7	
89+87	RT	1	24		24
90+47	LT	1	6	6	
91+00	LT	1	10	10	
		1	8	8	
		1	10	10	
91+71	LT	1	11	11	
		1	15	15	
93+02	RT	12	4	48	
		5	5	25	
93+15	LT	3	6	18	
		1	8	8	
94+87	LT	1	6	6	
		1	8	8	
		1	10	10	
96+47	RT	4	6	24	
		2	5	10	
105+01	RT	2	4	8	
		4	5	20	
		4	6	24	
106+11	RT	2	6	12	
		1	12	12	
106+62	RT	1	18		18
107+10	LT	6	4	24	
		6	5	30	
		6	6	36	
		1	8	8	
111+31	RT	2	4	8	
		3	5	15	
		1	6	6	
		1	8	8	
111+89	RT	1	16		16
115+39	LT	1	8	8	
118+70	RT	9	6	54	
		3	8	24	
120+90	RT	1	12	12	
122+60	LT	1	7	7	
		3	5	15	
123+60	LT	1	8	8	
128+41	LT	1	24		24
130+66	LT	2	6	12	
		1	5	5	
132+70	LT	2	5	10	
133+03	RT	2	4	8	
		3	5	15	
		1	6	6	
133+46	RT	4	5	20	
		2	6	12	

TREE REMOVAL					
STA	RT/ LT	NO.	IN	# Units 4 to 15	# Units 15 Plus
134+15	RT	1	24		24
134+45	LT	1	5	5	
135+17	RT	1	26		26
135+43	RT	1	4	4	
		1	5	5	
		1	6	6	
136+70	LT	3	5	15	
		6	6	36	
137+82	LT	1	6	6	
		2	5	10	
138+33	LT	1	6	6	
		1	12	12	
		1	7	7	
139+97	RT	3	4	12	
		5	5	25	
		4	6	24	
140+03	LT	1	5	5	
140+85	RT	1	7	7	
		1	14	14	
141+40	RT	1	6	6	
		1	7	7	
		1	14	14	
141+66	RT	1	6	6	
141+95	RT	1	16		16
		1	6	6	
144+65	RT	1	8	8	
		1	9	9	
145+20	RT	1	6	6	
		1	8	8	
		3	5	15	
146+74	RT	7	4	28	
		3	5	15	
147+53	LT	1	7	7	
147+57	RT	1	5	5	
		1	8	8	
		1	6	6	
147+93	LT	1	5	5	
148+20	RT	1	5	5	
		5	6	30	
		1	7	7	
		2	8	16	
		2	12	24	
150+14	LT	1	15	15	
		1	30		30
		2	4	8	
152+40	LT	1	8	8	
154+10	LT	1	6	6	
		2	8	16	
		1	5	5	
155+62	LT	1	18		18
157+78	LT	1	24		24
158+39.88	LT	4	8	32	
160+25	RT	1	10	10	
161+44	RT	2	12	24	
		2	6	12	
162+60	RT	1	4	4	
		2	5	10	
		1	6	6	
167+41	RT	1	5	5	
		1	6	6	
167+25-	LT	1	10	10	
168+75		4	5	20	
		2	4	8	
		1	15	15	
		1	22		22
169+20-	LT	1	8	8	
170+60		5	6	30	
		5	5	25	
		5	4	20	
175+62	RT	1	7	7	
176+18	RT	1	9	9	
177+08	RT	1	15	15	

TREE REMOVAL					
STA	RT/ LT	NO.	IN	# Units 4 to 15	# Units 15 Plus
177+09	LT	3	5	15	
180+10	LT	1	13	13	
185+18	RT	1	7	7	
186+90	RT	2	4	8	
		2	5	10	
		2	12	24	
		2	6	12	
188+73	RT	2	5	10	
		1	6	6	
		1	8	8	
191+69	RT	2	4	8	
		1	26		26
192+47	RT	1	13	13	
		3	4	12	
		3	5	15	
195+25	LT	1	30		30
		3	6	18	
195+69	LT	4	6	24	
195+98	LT	1	6	6	
196+18	RT	1	8	8	
		1	20		20
200+75-	LT	2	8	16	
201+27		5	6	30	
202+00	RT/LT	* * *			
204+52	RT	3	4	12	
		3	5	15	
		2	6	12	
207+70-	LT	2	10	20	
209+23		5	8	40	
		15	6	90	
210+09	LT	3	6	18	
		1	10	10	
212+18	RT	3	4	12	
		4	5	20	
		5	6	30	
213+19	RT	4	6	24	
		2	8	16	
213+55	LT	1	6	6	
		1	12	12	
213+89	LT	2	5	10	
213+90	RT	2	6	12	
		1	8	8	
214+58	LT	1	4	4	
215+12	RT	2	6	12	
		2	8	16	
215+63	RT	1	6	6	
		1	8	8	
		1	10	10	
216+18	RT	2	6	12	
		3	8	24	
216+25	LT	2	5	10	
		1	8	8	
216+84	LT	5	6	30	
216+96	RT	2	8	16	
		4	4	16	
217+40	LT	1	20		20
217+50	RT	1	6	6	
		1	8	8	
		1	10	10	
218+19	RT	1	6	6	
		1	8	8	
		1	10	10	
218+50	LT	4	5	20	
218+78	RT	2	6	12	
		1	8	8	
219+19	RT	1	24		24
219+45	RT	3	5	15	
219+50	LT	1	6	6	
		2	5	10	
220+25	RT	1	5	5	
		1	6	6	
220+33					

TREE REMOVAL						TREE REMOVAL						TREE REMOVAL						TREE REMOVAL						TREE REMOVAL							
STA	RT/ LT	NO.	IN	# Units		STA	RT/ LT	NO.	IN	# Units		STA	RT/ LT	NO.	IN	# Units		STA	RT/ LT	NO.	IN	# Units		STA	RT/ LT	NO.	IN	# Units			
				4 to 15	15 Plus					4 to 15	15 Plus					4 to 15	15 Plus					4 to 15	15 Plus					4 to 15	15 Plus		
End Section 06-1 = 266+02.9						End Section 06-2 = 503+11						End Section 06-2 = 503+11						End Section 06-3 = 772+00 BK													
Begin Section 06-2 = 266+02.9						Begin Section 06-3 = 503+11						Begin Section 06-3 = 503+11						Begin Section 06-4 = 819+16.79 AH													
267+56	LT	1	24		24	349+70	RT	2	5	10	408+12	RT	3	5	15	443+37	LT	1	10	10		24	622+92	LT	1	8		8			
272+50	RT	1	6	6		351+14	LT	1	4	4	408+76	RT	2	6	12	446+57	LT	2	4	8		24	623+56	RT	2	8		16			
273+88	RT	1	6	6		351+28	RT	1	6	6	409+32	RT	1	14	14	447+33	LT	2	4	8			632+89	RT	1	24		24			
276+45	LT	1	6	6		351+59	LT	1	8	8	410+23	LT	1	8	8	448+00	LT	1	5	5			636+00	RT	1	10		10			
		1	13	13		353+53	RT	1	6	6	410+52	LT	1	6	6	449+25	RT	1	14	14			636+10	RT	1	16		16			
		1	25	25				1	8	8	410+96-	RT	30	4	120	450+22	RT	1	12	12			636+90	LT	1	5		5			
279+77	RT	1	20		20			1	6	6	418+86			5	9	45	450+38	LT	5	5	25			638+53	LT	1	8		8		
280+83	RT	1	6	6				1	6	6				5	6	30	450+87	RT	1	14	14			638+91	RT	1	13		13		
		1	8	8				1	6	6				15	6	90	453+03	LT	1	10	10			639+35	LT	1	5		5		
		1	10	10				1	6	6				15	7	105	453+51	LT	1	24		24									
		1	12	12				1	6	6				10	8	80	483+74-	LT	5	5	25										
281+95	LT	1	11		11	364+25	LT	4	6	24	412+70-	LT	1	10	10	484+95		2	8	16											
286+30	LT	1	13		13	364+70	LT	2	5	10	420+64			25	6	150		1	12	12											
287+57	LT	1	11		11			1	8	8				25	5	125		1	10	10											
290+58	RT	1	6		6	365+13	LT	2	5	10				4	100		1	11	11												
292+74	LT	1	13		13			2	6	12	421+50	LT	1	5	5																
293+94	LT	1	16		16	366+80	LT	1	10	10				1	6	6															
295+70	LT	15	4	60				1	8	8	428+96	RT	2	10	20	487+95	LT	1	8	8											
		5	5	25				1	7	7	430+29	RT	3	6	18	489+60	LT	3	6	18											
297+85	RT	1	11		11	366+80	LT	1	10	10	430+70	RT	3	6	18	489+90	LT	2	8	16											
300+40	LT	1	10		10			1	8	8	430+94	RT	2	8	16	490+12	LT	3	6	18											
308+47	LT	1	10		10			2	6	12				2	5	10	490+80	LT	1	6	6										
		1	6	6				1	5	5	431+17	RT	1	6	6																
309+64	LT	1	12		12			2	5	10	431+25	LT	Sign			491+57	LT	1	6	6											
311+01	RT	2	6	12				1	10	10	431+60	LT	2	8	16	493+20	LT	1	10	10											
		2	8	16				2	8	16				2	6	12															
		2	10	20				1	10	10	431+99	RT	3	6	18																
311+69	RT	1	17		17			1	12	12	432+20	LT	4	5	20	494+29	LT	1	15	15											
316+98-	LT	1	10	10				1	6	6				1	8	8	495+32	RT	1	20											
317+61		1	34		34			1	6	6				1	10	10	496+00	RT	1	15	15										
		4	6	24				1	14	14				1	4	4	497+04	RT	1	6	6										
		2	8	16				1	6	6				1	6	6															
318+11	LT	1	16		16			1	14	14				1	10	10															
		5	8	40				1	6	6				1	10	10															
318+85	LT	3	4	12				2	4	8				1	8	8	500+00	LT	1	15	15										
		3	5	15				2	8	16				1	6	6															
		2	6	12				1	6	6	432+35	RT	2	6	12																
		1	8	8				2	8	16	432+62	RT	1	6	6																
320+00	LT	1	12	12				2	8	16	432+85	RT	1	10	10																
		1	8	8				1	9	9	433+45	LT	2	4	8																
		1	6	6				1	8	8				1	5	5															
320+62	LT	1	8	8				1	10	10				1	12	12															
320+92	LT	4	4	16				1	8	8	433+95	LT	3	6	18	503+39	RT	1	28												
		1	14	14				1	6	6				4	10	40	506+30	LT	1	15	15										
321+24	RT	1	6	6				1	6	6				1	12	12	509+19	RT	Sign												
323+33	LT	4	4	16				1	10	10	434+25	RT	1	8	8	510+00	RT	1	8	8											
328+48	RT	1	25		25			1	8	8	434+55	LT	1	8	8	511+00	LT	1	8	8											
330+00	LT	1	16		16			1	10	10				1	10	10															
331+10	LT	1	14		14			1	6	6	434+79	RT	2	8	16	514+02	RT	1	10	10											
336+90	LT	10	6	60				2	5	10	434+98	RT	2	6	12	516+36	RT	2	10	20											
337+77	LT	4	6	24				2	6	12	435+19	LT	1	8	8																
338+00	LT	1	10	10				1	8	8	435+27	RT	3	6	18	518+45	LT	1	10	10											
		3	6	18				1	6	6				1	6	6	523+98	LT	1	10	10										
		1	8	8				2	6	12	435+50	LT	2	6	12	525+56	LT	1	5	5											
338+26	RT	1	5	5				1	12	12	435+85	LT	1	12	12	527+96	LT	4	6	24											
341+63	LT	1	24		24			1	8	8	436+20	LT	1	8	8	530+18	LT	3	6	18											
342+38.4	RT/LT	1	6	6				1	6	6																					

TREE REMOVAL						
STA	RT/ LT	NO.	IN	* Units 4 to 15	# Units 15 Plus	
825+52	RT	1	12	12		
825+57	LT	2	10	20		
825+86	RT	1	8	8		
826+04	LT	6	6	36		
826+10	RT	1	8	8		
826+43	LT	3	8	24		
827+10	LT	4	10	40		
		3	6	18		
829+00	RT	1	6	6		
		1	8	8		
		1	10	10		
829+99	MED	2	8	16		
		1	10	10		
833+10	LT	4	6	24		
838+30	LT	5	6	30		
840+88	LT	3	6	18		
842+23	LT	2	6	12		
843+88	LT	2	6	12		
844+68	LT	1	6	6		
873+71	RT	1	30		30	
874+52	RT	1	24		24	
881+64	RT	4	10	40		
882+68	RT	1	30		30	
888+38	RT	1	20		20	
889+71	RT	1	20		20	
896+88	RT	1	15	15		
901+86	LT	3	10	30		
902+45	LT	2	10	20		
903+12	RT	1	14	14		
918+34	RT	3	6	18		
		1	36		36	
		1	24		24	
920+35	LT	1	24		24	
921+69	LT	1	8	8		
922+00	LT	1	8	8		
923+30	LT	1	8	8		
944+14	RT	1	15	15		
947+00	LT	1	14	14		
952+82	RT	5	5	25		
956+94	RT	1	8	8		
960+00	LT	1	24		24	
960+79	RT	4	5	20		
962+85	RT	1	9	9		
964+66	RT	1	6	6		
972+75	RT	1	6	6		
980+75	LT	3	8	24		
981+91	LT	3	6	18		
982+59	LT	1	6	6		
983+20	LT	1	6	6		
984+57	RT	3	6	18		
985+63	RT	1	6	6		
987+30	LT	4	12	48		
988+70	RT	3	6	18		
989+00	LT	1	6	6		
989+21	RT	1	8	8		
992+69	RT	4	10	40		
992+79	LT	4	10	40		
		2	8	16		
993+68	LT	1	8	8		
994+33	LT	1	8	8		
994+54	RT	1	8	8		
995+00	LT	2	8	16		
996+75	LT	2	10	20		
997+54	RT	1	8	8		
997+75	LT	1	18	18		
998+58	LT	1	10	10		
999+95	LT	3	10	30		
1000+53	LT	1	10	10		
		1	6	6		
1001+10	LT	1	10	10		
		1	6	6		
1001+59	RT	6	6	36		
1001+61	LT	4	6	24		
		1	9	9		
1003+19	LT	1	15	15		

TREE REMOVAL						
STA	RT/ LT	NO.	IN	* Units 4 to 15	# Units 15 Plus	
1048+70	LT	1	8	8		
1053+00	LT	1	8	8		
1054+50	LT	2	8	16		
		1	6	6		
1070+07	RT	4	8	32		
1070+43	RT	1	36		36	
		2	6	12		
1073+60	LT	1	8	8		
1074+25	LT	11	6	66		
1075+70	LT	2	6	12		
1076+64	LT	8	8	64		
1078+36	LT	1	8	8		
1079+00	LT	1	14	14		
1019+71	RT	***				
1024+60	LT	***				
1056+00	RT/LT	***				
1060+00	LT	***				
1075+05	LT	2	6	12		
		1	8	8		
End Section 06-4 = 1080+00						
Begin Section 06-5 = 1080+00						
1082+10	LT	1	10	10		
1082+13	LT	2	6	12		
1083+22	LT	1	6	6		
		1	8	8		
1084+55	LT	1	16		16	
		1	14	14		
1085+30	LT	1	10	10		
1085+34	LT	2	6	12		
1087+75	LT	2	6	12		
		1	14	14		
		1	10	10		
1088+98	LT	1	6	6		
1089+57	LT	2	6	12		
1092+11	LT	1	30		30	
1095+65	RT	3	8	24		
1095+93	RT	1	24		24	
1096+19	RT	3	8	24		
1096+50	RT	1	20		20	
1096+82	RT	1	15	15		
1097+40	LT	1	20		20	
1098+55	LT	3	10	30		
1100+00	LT	2	10	20		
		3	8	24		
		1	6	6		
1100+79	Left	1	7	7		
1100+96	RT	1	20		20	
1101+00	RT	1	24		24	
1102+42	LT	1	5	5		
		2	6	12		
1102+59	RT	1	30		30	
1102+98	RT	1	14	14		
1103+36	RT	3	6	18		
1103+90	LT	1	24		24	
1104+25	LT	4	6	24		
		1	8	8		
		1	10	10		
		2	5	10		
1111+65	LT	1	8	8		
1113+67	LT	4	6	24		
1113+85	LT	2	6	12		
1114+00	LT	2	8	16		
		2	6	12		
End Section 06-5 = 1320+00						
Begin Section 06-6 = 1320+00						
1325+50	LT	1	18		18	
1329+60	LT	2	12	24		
		2	6	12		
1334+00	RT	1	24		24	
1339+97	LT	2	8	16		
1342+69	LT	1	15	15		
1343+69	LT	1	21		21	
1344+25	LT	1	24		24	
1346+000	RT/LT	2	10	20		
		2	6	12		

TREE REMOVAL						
STA	RT/ LT	NO.	IN	* Units 4 to 15	# Units 15 Plus	
1161+50	LT	3	8		24	
1165+00	LT	1	24		24	
1167+00	LT	1	24		24	
		1	18		18	
		3	6	18		
169+74	RT	6	6	36		
1171+70	LT	10	8	80		
1172+55	LT	1	6	6		
1177+31	RT	5	6	30		
1177+99	RT	8	6	48		
1183+44	RT	1	20		20	
1192+50	LT	3	7	21		
1196+37	LT	6	6	36		
1198+23	LT	1	8	8		
		1	20		20	
1200+40	LT	2	6	12		
1210+75	LT	1	27		27	
		1	21		21	
1212+47	LT	1	10	10		
1216+00	RT	***				
1219+90.83	MED	1	10	10		
1247+00	RT/LT	1	36		36	
		4	18		72	
		2	10	20		
1251+99	LT	4	6	24		
1258+05	RT	2	30		60	
1260+05	LT	1	24		24	
1268+12	RT	2	6	12		
1268+45	LT	1	8	8		
1278+77	LT	1	30		30	
1279+66	RT	3	6	18		
		1	8	8		
		1	24		24	
1282+15	LT	1	15	15		
		30	6	180		
		3	8	24		
1282+68	RT	1	15	15		
1283+53	RT	2	8	16		
		3	6	18		
		1	12	12		
1284+11	RT	1	30		30	
1284+66	RT	1	15	15		
1285+39	RT	4	6	24		
1290+01	RT	1	12	12		
1290+94	RT	3	7	21		
1291+48	RT	1	12	12		
		1	15	15		
		12	6	72		
1292+12	RT	1	15	15		
		3	7	21		
1298+24	RT	1	12	12		
1302+47	RT	1	12	12		
1303+54	RT	1	8	8		
1305+70	LT	1	24		24	
		1	30		30	
1312+70	LT	25	6	150		
1314+65	LT	1	30		30	
1316+25	LT	20	6	120		
1317+64	RT	3	6	18		
		2	24		48	
1318+25	LT	1	30		30	
1318+61	RT	1	15	15		
End Section 06-6 = 1320+00						
Begin Section 06-7 = 1320+00						
1325+50	LT	1	18		18	
1329+60	LT	2	12	24		
		2	6	12		
1334+00	RT	1	24		24	
1339+97	LT	2	8	16		
1342+69	LT	1	15	15		
1343+69	LT	1	21		21	
1344+25	LT	1	24		24	
1346+000	RT/LT	2	10	20		
		2	6	12		

TREE REMOVAL						
STA	RT/ LT	NO.	IN	* Units 4 to 15	# Units 15 Plus	
1347+79	RT	2	6	12		
		1	10	10		
1349+15	RT	1	10	10		
		3	6	18		
1350+31	RT	1	14	14		
1352+47	LT	1	8	8		
1353+51	RT	2	25		50	
1356+72	LT	2	10	20		
1362+65	LT	1	24		24	
1363+06	LT	1	12	12		
1363+88	LT	1	21		21	
1364+30	LT	1	24		24	
1366+75	LT	1	21		21	
1383+67	RT	12	6	72		
		1	8	8		
1384+56	RT	12	6	72		
1386+77	RT	12	6	72		
13						

TREE REMOVAL					
STA	RT/ LT	NO.	IN	# Units	# Units
				4 to 15	15 Plus
1663+99	LT	1	15	15	
		1	8	8	
		1	10	10	
		1	12	12	
1664+59	LT	1	12	12	
1671+00	LT	•••			
1675+25	RT	1	10	10	
1701+31	RT	1	15	15	
1702+00	RT	2	24		48
1726+40	RT	6	6	36	
1727+00	RT	1	10	10	
1749+90	LT	1	8	8	
		1	10	10	
1753+48	LT	1	18		18
		1	12	12	
1767+98	LT	1	8	8	
1768+57	LT	1	8	8	
		1	10	10	
1770+10	LT	1	8	8	
1773+78-	RT/LT	•••			
1780+30	LT	1	24		24
		1	20		20
		5	12	60	
		12	10	120	
		15	8	120	
		13	6	78	
		3	5	15	
1783+30	LT	2	8	16	
		1	6	6	
1792+20	LT	1	11	11	
1792+89	LT	2	6	12	
1794+20	LT	1	14	14	
		2	10	20	
		3	8	24	
		3	6	18	
1795+68	LT	2	12	24	
		1	10	10	
		1	6	6	
		1	16		16
1811+38	LT	2	15	30	
1814+71	LT	1	12	12	
End Section 06-7 = 1815+21.64 BK					
Begin Section 06, 50-8 = 275+00 AH					
277+50	LT	1	10	10	
278+25	LT	1	6	6	
280+00	RT	6	10	60	
		1	12	12	
281+0	RT	1	10	10	
283+60	LT	1	10	10	
284+57	RT	Sign			
286+50	LT	1	20		20
299+15	LT	1	8	8	
344+00	LT	1	6	6	
351+20	RT	Sign			
353+90	LT	2	5	10	
359+75	LT	1	10	10	
361+42	LT	1	14	14	
		1	7	7	
365+00	LT	8	6	48	
		2	8	16	
		1	5	5	
		5	10	50	
369+45	LT	1	10	10	
369+54	RT	Sign			
376+70	LT	2	6	12	
381+66	LT	1	7	7	
384+50	LT	1	12	12	
		1	16		16
		2	10	20	
		3	8	24	
		7	5	35	

TREE REMOVAL					
STA	RT/ LT	NO.	IN	# Units	# Units
				4 to 15	15 Plus
		11	6	66	
384+70	RT/LT	•••			
		1	8	8	
		7	6	42	
		1	12	12	
		1	18		18
401+55	LT	2	8	16	
406+69	LT	1	8	8	
414+62	LT	•••			
424+78	LT	1	6	6	
430+00	RT	2	8	16	
433+06	LT	1	6	6	
433+42	LT	1	5	5	
442+38	LT	1	5	5	
453+86	LT	1	6	6	
		1	10	10	
Bureau/LaSalle County Line = 462+39					
465+97	LT	2	5	10	
468+85	LT	1	8	8	
		1	6	6	
482+35	LT	1	7	7	
483+76	LT	1	5	5	
513+70	LT	1	8	8	
514+50	LT	1	6	6	
522+00	LT	1	6	6	
522+30	LT	1	14	14	
522+65	LT	1	16		16
526+26	LT	1	10	10	
526+50	LT	2	6	12	
		2	8	16	
528+75	LT	2	6	12	
		1	5	5	
531+39	LT	1	6	6	
		1	8	8	
End Section 06, 50-8 = 549+00					
PROJECT	TOTALS			Units 4-15 17263	Units > 15 3648

FILE NAME = c:\projects\ved\1128\details.dgn

USER NAME = braboypo  
 PLOT SCALE = 50.0000' / IN.  
 PLOT DATE = Oct 24, 2007 - 02:12:13 PM

DESIGNED - ---  
 DRAWN - ---  
 CHECKED - ---  
 DATE - ---  
 REVISED - ---  
 REVISED - ---  
 REVISED - ---  
 REVISED - ---

STATE OF ILLINOIS  
 DEPARTMENT OF TRANSPORTATION

SCHEDULES

SCALE: \_\_\_\_\_ SHEET NO. \_\_\_ OF \_\_\_ SHEETS STA. \_\_\_\_\_ TO STA. \_\_\_\_\_

F.A.I. RTE.	SECTION	COUNTY	TOTAL SHEETS	SHEET NO.
80	*	BUREAU	6	6
D3 INTERSTATE SAFETY 2008-1		CONTRACT NO. 66739		
FED. ROAD DIST. NO. ILLINOIS FED. AID PROJECT				