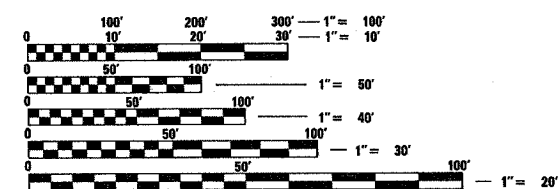


INDEX OF SHEETS

- 1 COVERSHEET
- 2 GENERAL NOTES & TYPICAL
- 3 SUMMARY
- 4-5 SCHEDULES
- 6-8 DETAILS

- STANDARDS
- 000001-05 STANDARD SYMBOLS, ABBREVIATIONS AND PATTERNS
 - 001001-01 AREAS OF REINFORCEMENT BARS
 - 606001-03 CONCRETE CURB TYPE B AND COMBINATION CONCRETE CURB AND CUTTER
 - 630001-07 STEEL PLATE BEAM GUARDRAIL
 - 630301-04 SHOULDER WIDENING FOR TYPE 1 (SPECIAL) GUARDRAIL TERMINALS
 - 631031-06 TRAFFIC BARRIER TERMINAL, TYPE 6
 - 635006-02 REFLECTOR AND TERMINAL MARKER PLACEMENT
 - 635011-01 REFLECTOR MARKER AND MOUNTING DETAILS
 - 701101-01 OFF-ROAD OPERATIONS MULTILANE, 4.5 m (15') TO 600 mm (24") FROM PAVEMENT EDGE
 - 701106-01 OFF-ROAD OPERATIONS, MULTILANE, MORE THAN 4.5 m (15') AWAY
 - 701400-02 APPROACH TO LANE CLOSURE, FREEWAY/EXPRESSWAY
 - 701401-04 LANE CLOSURE, FREEWAY/EXPRESSWAY
 - 701411-04 LANE CLOSURE, MULTILANE, AT ENTRANCE OR EXIT RAMP FOR SPEEDS P 45 MPH
 - 701901 TRAFFIC CONTROL DEVICES

MICROFILMED _____
 REEL NUMBER _____
 AWARDED _____
 RESIDENT ENGINEER _____
 AS BUILT CHANGES WERE MADE
 ON THE FOLLOWING SHEETS _____



FULL SIZE PLANS HAVE BEEN PREPARED USING STANDARD ENGINEERING SCALES. REDUCED SIZED PLANS WILL NOT CONFORM TO STANDARD SCALES. IN MAKING MEASUREMENTS ON REDUCED PLANS, THE ABOVE SCALES MAY BE USED.

J.U.L.I.E.
 JOINT UTILITY LOCATION INFORMATION FOR EXCAVATION
 1-800-892-0123
 OR 811

PROJECT ENGINEER JOE KANNEL
UNIT CHIEF PATRICK BRABOY
 DISTRICT 3 NO. (815) 434-6131
CONTRACT NO. 66740

STATE OF ILLINOIS
DEPARTMENT OF TRANSPORTATION
DIVISION OF HIGHWAYS

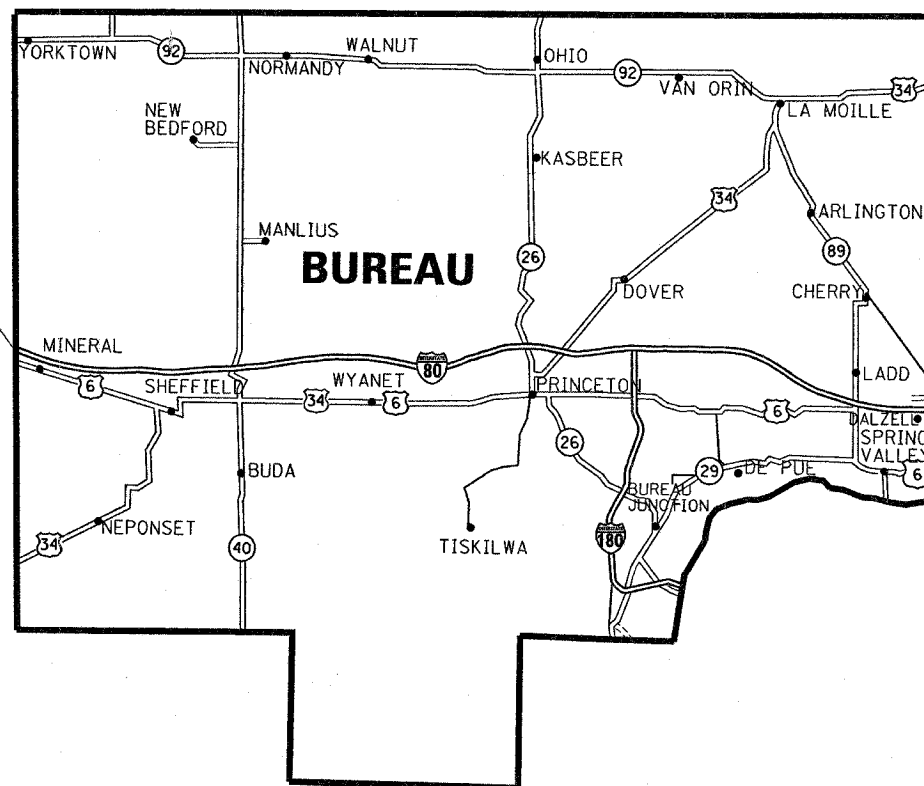
PROPOSED
HIGHWAY PLANS

FAI ROUTE I-80
SECTION D3 INTERSTATE SAFETY 2008-2
PROJECT ACHSIP-080-1(143)040
BUREAU COUNTY

C - 93 - 020 - 08

PROJECT DESCRIPTION

HENRY COUNTY LINE TO LASALLE COUNTY LINE
GUARDRAIL, END SECTIONS, ATTENUATORS



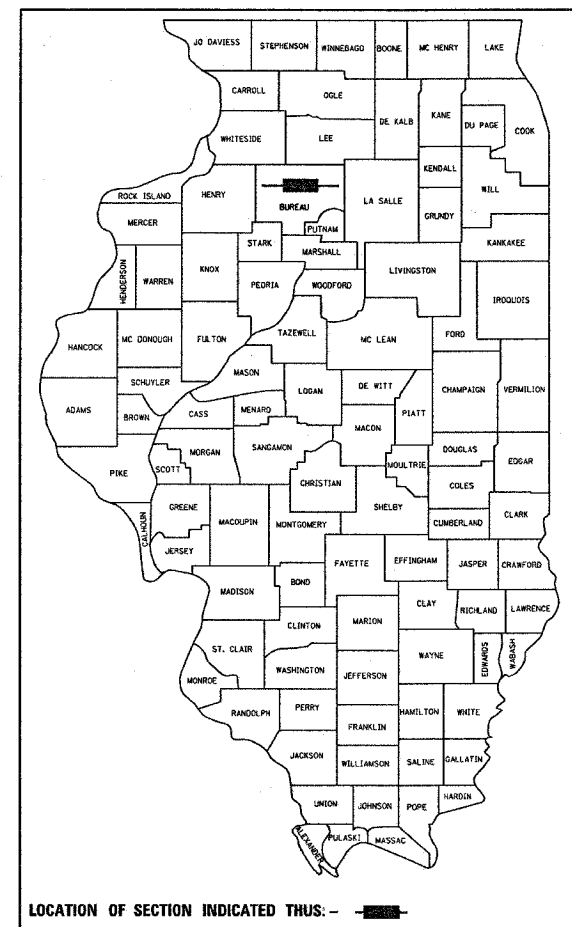
BEGIN PROJECT @
 HENRY COUNTY LINE

END PROJECT @
 LASALLE COUNTY LINE

LOCATION MAP
 NOT TO SCALE

NET LENGTH = 37.04 MI

F.A.I. RTE.	SECTION	COUNTY	TOTAL SHEETS	SHEET NO.
80	*	BUREAU	8	1
FED. ROAD DIST. NO.	ILLINOIS	CONTRACT NO. 66740		
* D3 INTERSTATE SAFETY 2008-2		8+4=12		
D-93-012-08				



LOCATION OF SECTION INDICATED THUS: -

FUNCTION CLASSIFICATION

2005 ADT = 22,950
 P.V. = 59.2% S.U. = 4.4% M.U. = 36.4%

STATE OF ILLINOIS
 DEPARTMENT OF TRANSPORTATION
 DIVISION OF HIGHWAYS

SUBMITTED 12/3 2007

George Rogers
 DEPUTY DIRECTOR OF HIGHWAYS, REGION ENGINEER

December 7, 2007
Eric E. Horak
 INTERIM ENGINEER OF DESIGN AND ENVIRONMENT

December 7, 2007
Christine M. Reed
 DIRECTOR OF HIGHWAYS, CHIEF ENGINEER

PRINTED BY THE AUTHORITY
OF THE STATE OF ILLINOIS

PLOT DATE = Dec 03, 2007 - 07:40:48 AM
 FILE NAME = c:\projects\ed01208\details.dgn
 PLOT SCALE = 50,0486 / IN.
 USER NAME = BRABOYPC