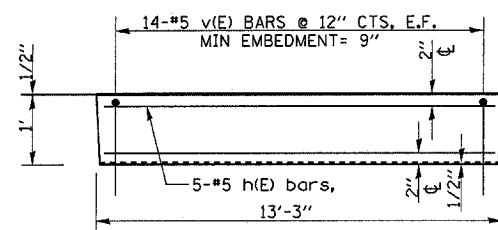
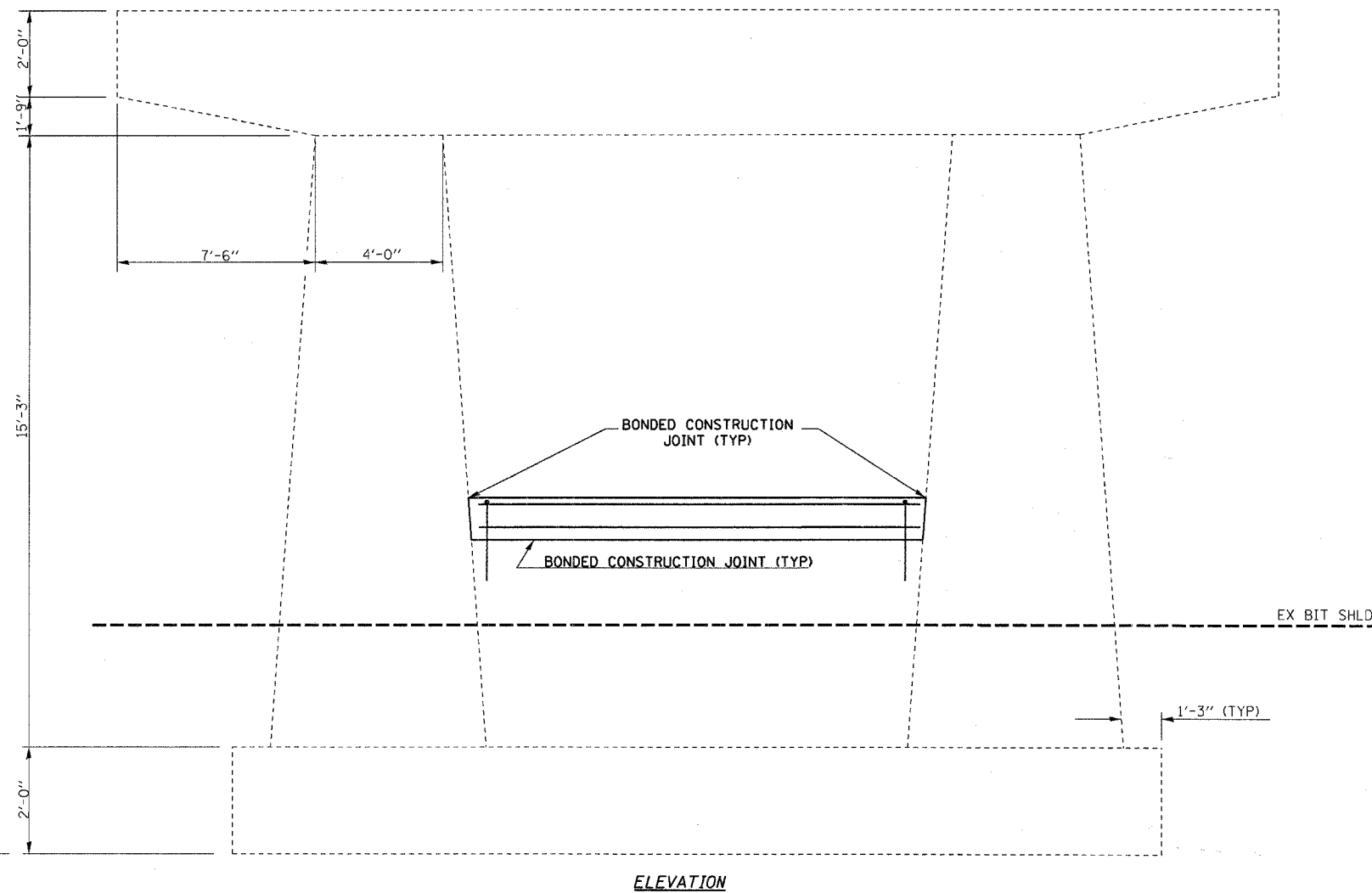
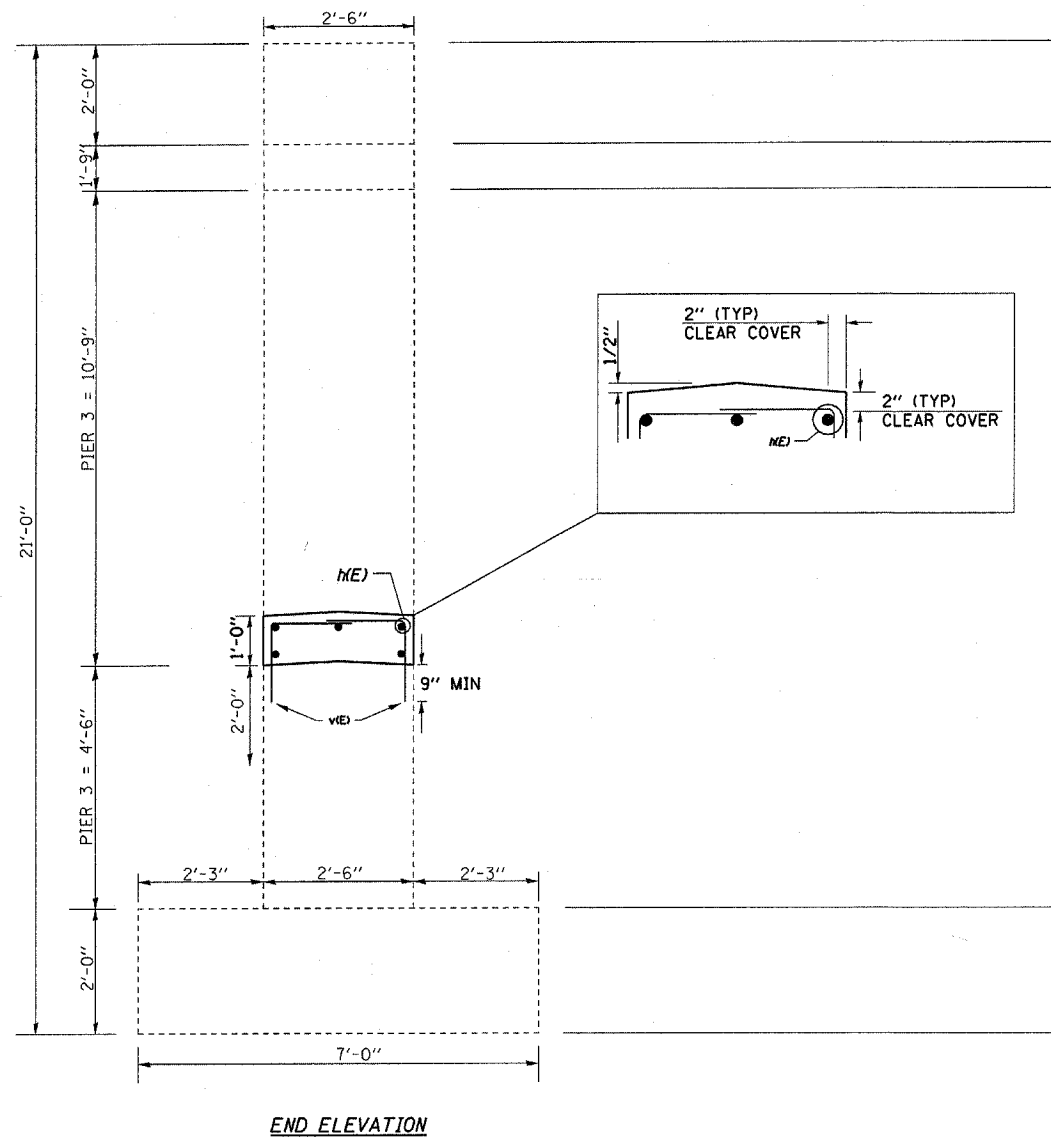
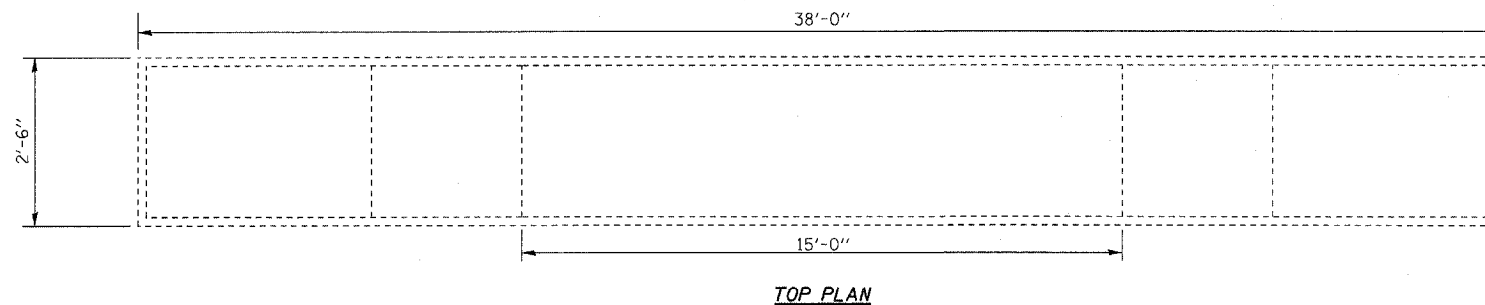


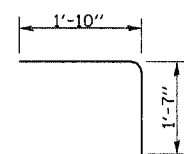
NOTE:

- 1.) DRILL & EPOXY GROUT v(E) BARS IN 9" (MIN) DRILLED HOLES ACCORDING TO SECTION 584 OF THE STANDARD SPECIFICATIONS.
- 2.) USE EXISTING PLANS INCLUDED TO AVOIDED DAMAGING LONGITUDINAL REINFORCEMENT IN THE EXISTING CRASHWALL WHILE DRILLING & EPOXY GROUTING v(E) BARS.
- 3.) ALL CRASH WALLS MUST BE A MINIMUM OF 2'-5" AND RAISED A MINIMUM OF 1'-0".



BAR	NO	SIZE	LENGTH	SHAPE
h(E)	5	#5	12'-11"	—
v(E)	28	#5	3'-5"	└
ITEM		UNIT	Quantity	
CONCRETE STRUCTURES		CU YDS	1.4	
REINFORCEMENT BARS, EPOXY COATED		POUNDS	167	

BILL OF MATERIAL



fc = 3,500 psi
FY = 60,000 PSI (REINFORCEMENT)

DESIGN STRESSES (NEW)

FAI RTE 80
INTERSTATE SAFETY 2008-2
BUREAU CO / STA 1038+66.70
SN 006-0116

PIER 3
CRASH WALL EXTENSION

FILE NAME	USER NAME	DESIGNED -	REVISED -	STATE OF ILLINOIS DEPARTMENT OF TRANSPORTATION	GENERAL NOTES	F.A.I. RTE.	SECTION	COUNTY	TOTAL SHEETS	SHEET NO.	
ci:\projects\ed01208\details	braboypc	DRAWN -	REVISED -			80	*	BUREAU	8	7	
		CHECKED -	REVISED -			D3 INTERSTATE SAFETY 2008-2 CONTRACT NO. 66740					
		REVISIONS	REVISED -			FED. ROAD DIST. NO. ILLINOIS FED. AID PROJECT					

SCALE: _____ SHEET NO. ____ OF ____ SHEETS STA. 1038+66.70