

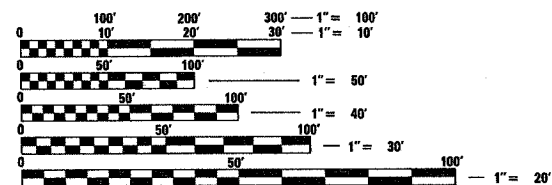
INDEX OF SHEETS

- 1 COVERSHEET
- 2 GENERAL NOTES & TYPICAL
- 3 SUMMARY
- 4-5 SCHEDULES
- 6-8 DETAILS

STANDARDS

- 000001-05 STANDARD SYMBOLS, ABBREVIATIONS AND PATTERNS
- 001001-01 AREAS OF REINFORCEMENT BARS
- 606001-03 CONCRETE CURB TYPE B AND COMBINATION CONCRETE CURB AND CUTTER
- 630001-07 STEEL PLATE BEAM GUARDRAIL
- 630301-04 SHOULDER WIDENING FOR TYPE 1 (SPECIAL) GUARDRAIL TERMINALS
- 631031-06 TRAFFIC BARRIER TERMINAL, TYPE 6
- 635006-02 REFLECTOR AND TERMINAL MARKER PLACEMENT
- 635011-01 REFLECTOR MARKER AND MOUNTING DETAILS
- 701101-01 OFF-ROAD OPERATIONS MULTILANE, 4.5 m (15') TO 600 mm (24") FROM PAVEMENT EDGE
- 701106-01 OFF-ROAD OPERATIONS, MULTILANE, MORE THAN 4.5 m (15') AWAY
- 701400-02 APPROACH TO LANE CLOSURE, FREEWAY/EXPRESSWAY
- 701401-04 LANE CLOSURE, FREEWAY/EXPRESSWAY
- 701411-04 LANE CLOSURE, MULTILANE, AT ENTRANCE OR EXIT RAMP FOR SPEEDS P 45 MPH
- 701901 TRAFFIC CONTROL DEVICES

MICROFILMED _____
 REEL NUMBER _____
 AWARDED _____
 RESIDENT ENGINEER _____
 AS BUILT CHANGES WERE MADE
 ON THE FOLLOWING SHEETS _____



FULL SIZE PLANS HAVE BEEN PREPARED USING STANDARD ENGINEERING SCALES. REDUCED SIZED PLANS WILL NOT CONFORM TO STANDARD SCALES. IN MAKING MEASUREMENTS ON REDUCED PLANS, THE ABOVE SCALES MAY BE USED.

J.U.L.I.E.
 JOINT UTILITY LOCATION INFORMATION FOR EXCAVATION
 1-800-892-0123
 OR 811

PROJECT ENGINEER JOE KANNEL
UNIT CHIEF PATRICK BRABOY
 DISTRICT 3 NO. (815) 434-6131
CONTRACT NO. 66740

STATE OF ILLINOIS
DEPARTMENT OF TRANSPORTATION
DIVISION OF HIGHWAYS

PROPOSED
HIGHWAY PLANS

FAI ROUTE I-80
SECTION D3 INTERSTATE SAFETY 2008-2
PROJECT ACHSIP-080-1(143)040
BUREAU COUNTY

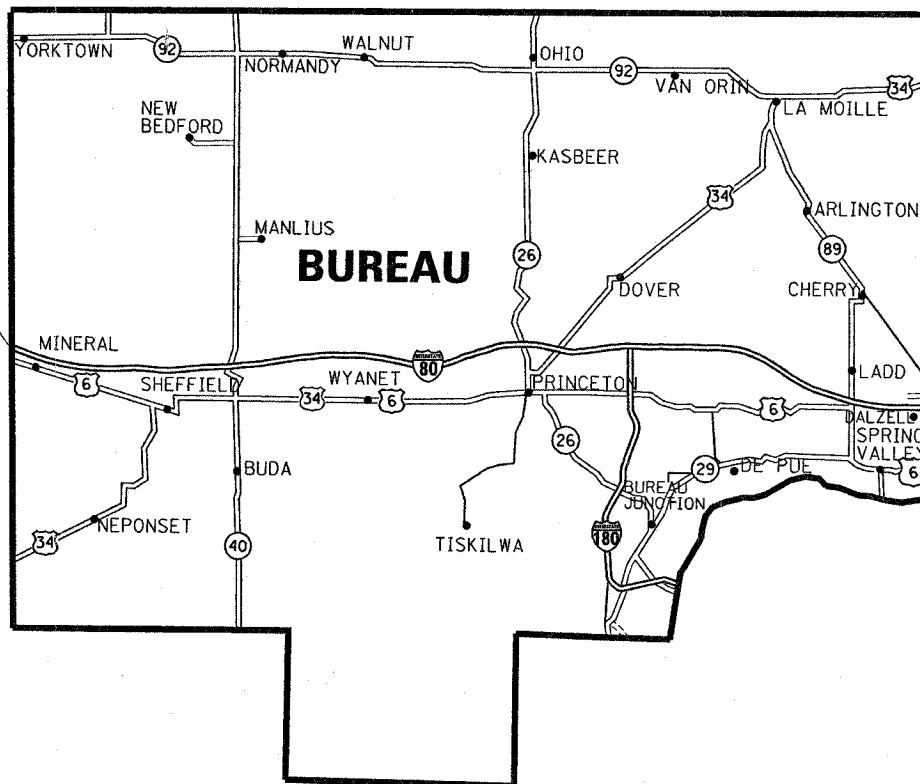
C - 93 - 020 - 08

PROJECT DESCRIPTION

HENRY COUNTY LINE TO LASALLE COUNTY LINE
GUARDRAIL, END SECTIONS, ATTENUATORS

BEGIN PROJECT @
HENRY COUNTY LINE

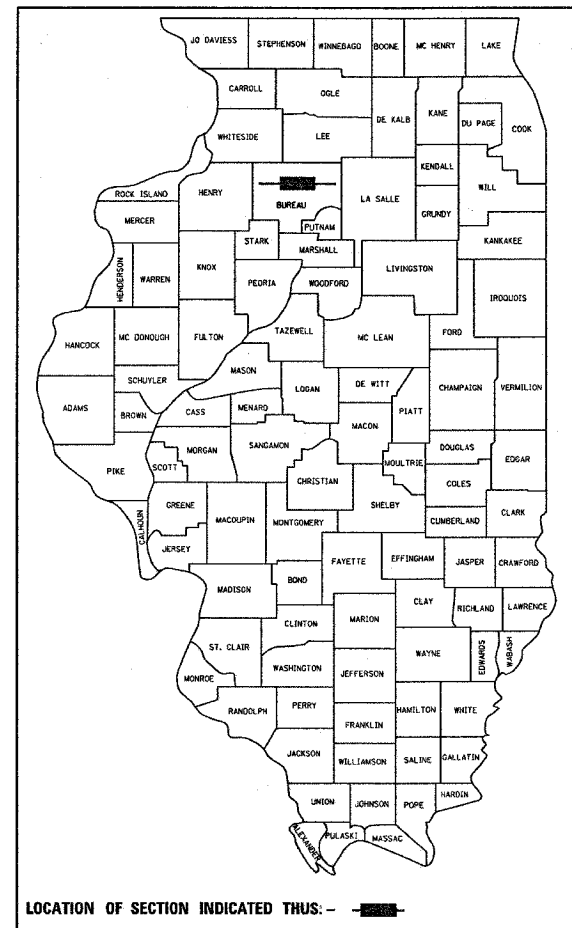
END PROJECT @
LASALLE COUNTY LINE



LOCATION MAP
NOT TO SCALE

NET LENGTH = 37.04 MI

F.A.I. RTE.	SECTION	COUNTY	TOTAL SHEETS	SHEET NO.
80	*	BUREAU	8	1
FED. ROAD DIST. NO.	ILLINOIS	CONTRACT NO. 66740		
* D3 INTERSTATE SAFETY 2008-2		8+4=12		
D-93-012-08				



FUNCTION CLASSIFICATION

2005 ADT = 22,950
 P.V. = 59.2% S.U. = 4.4% M.U. = 36.4%

STATE OF ILLINOIS
 DEPARTMENT OF TRANSPORTATION
 DIVISION OF HIGHWAYS

SUBMITTED 12/3 2007
George Dizon
 DEPUTY DIRECTOR OF HIGHWAYS, REGION ENGINEER

December 7, 2007
Eric E. Horak
 INTERIM ENGINEER OF DESIGN AND ENVIRONMENT

December 7, 2007
Christine M. Reed
 DIRECTOR OF HIGHWAYS, CHIEF ENGINEER

PRINTED BY THE AUTHORITY
OF THE STATE OF ILLINOIS

PLOT DATE = Dec 03, 2007 - 07:40:48 AM
 FILE NAME = c:\projects\ed01208\details.dgn
 PLOT SCALE = 50.0486' / IN.
 USER NAME = BRABOYPC

GENERAL NOTES

SEEDING SHALL NOT BE PERMITTED AT ANY TIME WHEN THE GROUND IS FROZEN, WET, OR IN AN UNTILLABLE CONDITION. LOCATIONS TO BE SEEDED WILL BE DETERMINED BY THE ENGINEER.

ONLY THOSE TREES DESIGNATED BY THE ENGINEER OR LISTED IN THE TREE REMOVAL SCHEDULE SHALL BE REMOVED. THE CONTRACTOR SHALL PROTECT ALL REMAINING TREES FROM DAMAGE DUE TO HIS OPERATIONS.

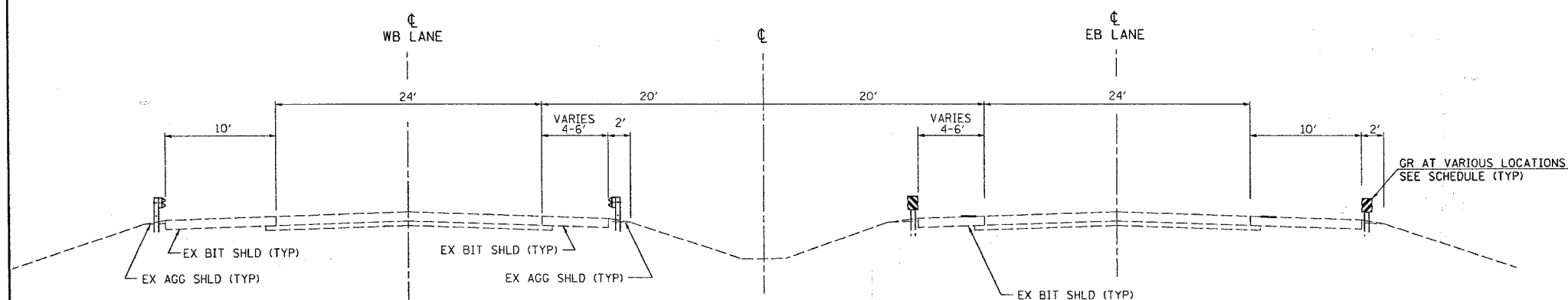
THE FINISHED EARTHWORK SHALL HAVE A VEGETATION SUSTAINING SOIL COVERING THE TOP FOUR INCHES IN AREAS TO BE SEEDED OR SODDED. THE FINISHED EARTHWORK SHALL ALSO BE SEEDED. THE VEGETATION SUSTAINING SOIL REQUIRED AND THE SEEDING WILL NOT BE PAID FOR SEPARATELY BUT SHALL BE INCLUDED IN THE COST OF FURNISHED EXCAVATION.

ABANDONED UNDERGROUND UTILITIES THAT CONFLICT WITH CONSTRUCTION SHALL BE DISPOSED OF OUTSIDE THE LIMITS OF THE RIGHT OF WAY ACCORDING TO ARTICLE 202.03 OF THE STANDARD SPECIFICATIONS AND AS DIRECTED BY THE ENGINEER. THIS WORK WILL NOT BE PAID FOR SEPARATELY, BUT SHALL BE INCLUDED IN THE COST OF EARTH EXCAVATION.

ANY REFERENCE TO A STANDARD IN THESE PLANS SHALL BE INTERPRETED TO MEAN THE EDITION AS INDICATED BY THE SUBNUMBER SHOWN IN THE LIST OF STANDARDS OR THE COPY INCLUDED IN THESE PLANS.

THE CONTRACTOR'S ATTENTION IS DIRECTED TO THE PRESENCE OF DEPARTMENT-OWNED UNDERGROUND ELECTRICAL CABLE WITHIN THE LIMITS OF THE PROPOSED IMPROVEMENT. THE CONTRACTOR SHALL REQUEST THE ILLINOIS DEPARTMENT OF TRANSPORTATION IN OTTAWA (815-434-8417) TO LOCATE THE UNDERGROUND FACILITIES, PROVIDING A MINIMUM OF 72 HOURS NOTICE. THE DEPARTMENT IS NOT A MEMBER OF THE JOINT UTILITY LOCATING INFORMATION FOR EXCAVATORS (JULIE) SYSTEM.

ALL DAMAGE TO DEPARTMENT OWNED UNDERGROUND FACILITIES, CAUSED BY THE CONTRACTOR SHALL BE REPAIRED TO THE SATISFACTION OF THE DEPARTMENT AT THE CONTRACTOR'S EXPENSE. THIS SHALL INCLUDE ALL TEMPORARY REPAIRS REQUIRED TO KEEP THE FACILITY OPERATIONAL WHILE MATERIAL IS BEING OBTAINED TO MAKE PERMANENT REPAIRS. SPLICING OF ELECTRIC CABLE SHALL NOT BE ALLOWED. ELECTRIC CABLE SHALL BE REPLACED FROM POLE TO POLE OR CONTROLLER.



**TYPICAL SECTION
FAI 80**

STATE OF ILLINOIS
DEPARTMENT OF TRANSPORTATION
DISTRICT THREE

PREPARED BY: Rich Powell
DISTRICT STUDIES & PLANS ENGINEER

DATE: 12/3/07

EXAMINED BY: Heidi Jones
DISTRICT CONSTRUCTION ENGINEER

James P. [Signature]
DISTRICT MATERIALS ENGINEER

[Signature]
DISTRICT OPERATIONS ENGINEER

FILE NAME = c:\projects\ed01208\detail.dgn	USER NAME = BRAD0YPC	DESIGNED -	REVISED -	STATE OF ILLINOIS DEPARTMENT OF TRANSPORTATION	GENERAL NOTES	F.A.I. RTE.	SECTION	COUNTY	TOTAL SHEETS	SHEET NO.
PLOT SCALE = 5/8"=1' @ 1/4"	CHECKED -	REVISED -	80			*	BUREAU	8	2	
PLOT DATE = Dec 03, 2007 - 07:04:45 AM	DATE -	REVISED -	D3 INTERSTATE SAFETY 2008-2			CONTRACT NO. 66740		FED. ROAD DIST. NO. ILLINOIS FED. AID PROJECT		
SCALE: _____ SHEET NO. _____ OF _____ SHEETS		STA. _____ TO STA. _____								

SUMMARY OF QUANTITIES

CODE NO.	ITEM	UNIT	90% FED 10% STATE TOTAL QUANTITY	SFTY-2A		
				RDWY SFTY-3J	BRIDGES	
					SN 006-0162	SN 006-0116
20400800	FURNISHED EXCAVATION	CU YD	225	225		
44000300	CURB REMOVAL	FOOT	80	80		
50300225	CONCRETE STRUCTURES	CU YD	6.4		5	1.4
50800205	REINFORCEMENT BARS, EPOXY COATED	POUND	842		675	167
54200220	PIPE CULVERTS, CLASS D, TYPE 1 15"	FOOT	150	150		
54215550	METAL END SECTIONS 15"	EACH	4	4		
60600605	CONCRETE CURB, TYPE B	FOOT	2532	2532		
63000000	STEEL PLATE BEAM GUARD RAIL, TYPE A	FOOT	3000	3000		
63100045	TRAFFIC BARRIER TERMINAL, TYPE 2	EACH	12	12		
63100085	TRAFFIC BARRIER TERMINAL, TYPE 6	EACH	56	56		
63100167	TRAFFIC BARRIER TERMINAL, TYPE 1 (SPECIAL) TANGENT	EACH	46	46		
63200310	GUARDRAIL REMOVAL	FOOT	11911	11911		
63301000	REMOVE AND RE-ERECT STEEL PLATE BEAM GUARD RAIL	FOOT	1080	1080		
67100100	MOBILIZATION	L SUM	1	1		
70100800	TRAFFIC CONTROL AND PROTECTION, STANDARD 701401	L SUM	1	1		
78200405	GUARDRAIL MARKERS	EACH	50	50		
78200500	BARRIER WALL MARKERS	EACH	50	50		
78201000	TERMINAL MARKER - DIRECT APPLIED	EACH	46	46		
X0325279	CLASS SI CONCRETE (MISCELLANEOUS)	CU YD	66	66		
X7011420	TRAFFIC CONTROL AND PROTECTION, STANDARD 701411	LSUM	1	1		
Z0030150	IMPACT ATTENUATORS (NON-REDIRECTIVE), TEST LEVEL 3	EACH	48	48		

SCOPE OF WORK

MILE POST	STR. NUMBER	LANE	GR REMOVAL	SPBGR TYPE A	TBT TYPE 1 SPEC (TANG)	TERM MKS DA	TBT T6	TBT T2	IMP ATTN NON-RE TL3	FURN FX	CONC STRUCT.	P.CULV. CL "D" TYPE 1, 15"	METAL END SECTIONS, 15"	REBAR EPOXY COATED	REM & REERECT GR	CURB REMOVAL	CLASS SI CONC (MISC)	CONC CURB TYPE B	SCOPE OF WORK (SEE LEGEND)	
			FOOT	FOOT	EACH	EACH	EACH	EACH	EACH	CU YD	CU YD	FOOT	EACH	POUNDS	FOOT	FOOT	CU YD	FOOT		
36.5	006-0001	EBDL	44				1	1								30	5	0.56	30	2,6,10
36.5	006-0001	FBPL	44				1	1								30	5	0.56	30	2,6,10
36.5	006-0002	WBDL	44				1	1								30	5	0.56	30	2,6,10
36.5	006-0002	WBPI	44				1	1								30	5	0.56	30	2,6,10
37.8	006-0115	EBDL	94		1		1			5								1.1	44	1,2,4,5
37.8	006-0115	MEDIAN	200						2											7
37.8	006-0115	WBDL	94		1		1			5								1.1	44	1,2,4,5
37.2	006-0003	EBDL	44				1	1							30	5	0.56	30	2,6,10	
37.2	006-0003	FBPL	44				1	1							30	5	0.56	30	2,6,10	
37.2	006-0004	WBDL	44				1	1							30	5	0.56	30	2,6,10	
37.2	006-0004	WBPI	44				1	1							30	5	0.56	30	2,6,10	
38.5	006-0122	FB	158		1		2			5								1.1	44	1,2,4,5
38.5	006-0122	MEDIAN	200						2											7
38.5	006-0122	WB	94		1		1			5								1.1	44	1,2,4,5
39.2	006-0005	EBDL	44				1	1							30	5	0.56	30	2,6,10	
39.2	006-0005	FBPL	44				1	1							30	5	0.56	30	2,6,10	
39.2	006-0006	WBDL	44				1	1							30	5	0.56	30	2,6,10	
39.2	006-0006	WBPI	44				1	1							30	5	0.56	30	2,6,10	
39.4	006-0007	EBDL	50		1					5										1,4
39.4	006-0007	FBPL	200	300	1		1			5										4,8
39.4	006-0008	WBDL	50		1					5										1,4
39.4	006-0008	WBPI	200	300	1					5										4,8
40.3	006-0121	FB	44				1											0.56	44	2,5
40.3	006-0121	MEDIAN	200						2											7
40.3	006-0121	WB	44		1		1			5								0.56	44	1,2,4,5
41	NO STRUCTURE	WBDL	50		1		1													1,4
42.2	006-0117	FB	44		1		1			5								0.56	44	1,2,4,5
42.2	006-0117	MEDIAN	200						2											7
42.2	006-0117	WB	44				1											0.56	44	2,5
43.5	006-0009	EBDL			1		1			5										1,4
43.5	006-0009	FBPL	200	300	1		1			5										4,8
43.5	006-0010	WBDL																		NO WORK
43.5	006-0010	WBPI																		NO WORK
44	006-0011	EBDL																		NO WORK
44	006-0011	FBPL																		NO WORK
44	006-0012	WBDL			1		1			5										1,4
44	006-0012	WBPI	200	300	1		1			5										4,8
45	006-0089	FB	158		1		1	2		5								2.2	88	1,2,4,5
45	006-0089	MEDIAN	260						2			75	2							7,11
45	006-0089	WB	108					2										2.2	88	1,2,4,5
45.1	006-0013	FB	44					1										1.1	44	2,5
45.1	006-0013	MEDIAN	340						2											7
45.1	006-0013	WB	158		1		1	2		5								2.2	44	1,2,4,5
47	NO STRUCTURE	EBDL	50		1		1													1,4
48.2	006-0123	FB	44				1											1.1	44	2,5
48.2	006-0123	MEDIAN	310						2											7
48.2	006-0123	WB	94		1		1	1		5								1.1	44	1,2,4,5
50.1	006-0112	FB	94		1		1	1		5								1.1	44	1,2,4,5
50.1	006-0112	MEDIAN	360						2											7
50.1	006-0112	WB	94		1		1	1		5								1.1	44	1,2,4,5

SCOPE OF WORK LEGEND: 1.REM DEFICIENT E.S. AND REPLACE W/TYPE 1 E.S. 2. REM DEFICIENT END SECTION/REPLACE W/TYPE 6 E.S. 3.ADD PIPE CULVERT NEAR PIER FOR DRAINAGE 4. ADD FURNISHED EXCAVATION FOR TBT, T1 (SP) TO MEET STD 630301
 5. PLACE TYPE B CURB UNDER EXIST. OR PROP. T6 END SECT 6. REMOVE 5' FO TAPERED CURB AND PLACE NEW C&G UNDER ALL OF TYPE 6 E.S. 7. REMOVE MEDIAN G.R. AND REPLACE W/IMP. ATTN.
 8. REMOVE TAPERED MEDIAN G.R, REPLACE WITH TANGENT G.R. AND TYPE 1 (SP) TANGENT E.S. 9. ADD CONCRETE TO PIER CAP 10. REMOVE AND RE-ERECT G.R. FOR TYPE B CURB PLACMENT 11. PLACE PIPE CULVERT AT CENTER PIER FOR DRAINAGE
 NOTE--EXISTING GR IN BITUMINOUS STABILIZATION FOR 006-0124 EBDL. REMOVE AND INSERT NEW END SECTION THROUGH EXISTING STABILIZATION-COST INCLUDED IN THE PRICE OF TBT, T1 (SP) TANG.
 NOTE- NO CURB TO BE PLACE NEAR STRUCTURES 006-0007,006-0008,006-0009,006-0010,006-0011,006-0012-THESE BRIDGES TO HAVE NEW DECKS WITH APPROACH PAVEMENT WITHIN A YEAR ON A SPERERATE CONTRACT

GUARDRAIL AND BARRIER WALL MARKERS		
LOCATION	GUARDRAIL	BARRIER
	MARKERS	WALL MARKERS
BUREAU COUNTY	EACH 50	EACH 50
TOTAL	50	50

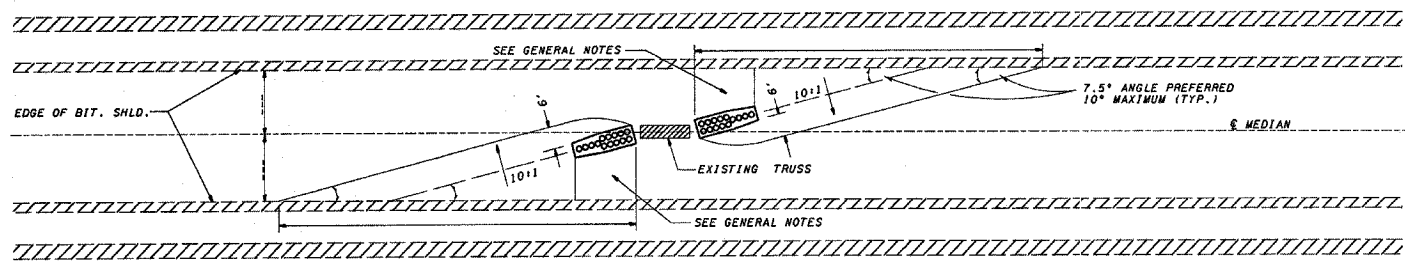
GUARDRAIL MARKERS ARE TO BE PLACED ON ALL NEW GUARDRAIL AND END SECTIONS ACCORDING TO STADARD 635006. ALSO, PLACE GUARDRAIL MARKERS, DELINATORS, AND BARRIER WALL MARKERS THROUGHOUT COUNTY TO REPLACE MISSING OR DAMAGED ONES. FINAL LOCATION TO BE DETERMINED BY THE RESIDENT ENGINEER

SCOPE OF WORK

MILE POST	STR. NUMBER	LANE	GR REMOVAL	SPBGR TYPE A	TBT TYPE 1 SPEC (TANG)	TERM MKS DA	TBT T6	TBT T2	IMP ATTN NON-RE T1 3	FURN EX	CONC STRUCT.	P.CULV. CL "D" TYPE 1, 15"	METAL END SECTIONS, 15"	REBAR EPOXY COATED	REM & REERECT GR	CURB REMOVAL	CLASS SI CONC (MISC)	CONC CURB TYPE B	SCOPE OF WORK
			FOOT	FOOT	FACH	FACH	FACH	FACH	FACH	FACH	CU YD	CU YD	FOOT	FACH	POUNDS	FOOT	FOOT	CU YD	FOOT
50.2	006-0014	EBDL	50		1	1				5					120		4.4	120	1,4,5,10
50.2	006-0014	FBPI	200	300	1	1				5					120		4.4	120	4,5,8,10
50.2	006-0015	WBPI	50		1	1				5					120		4.4	120	1,4,5,10
50.2	006-0015	WBPI	200	300	1	1				5					120		4.4	120	4,5,8,10
50.4	006-0016	EBDL	44		1	1	1			5					30	5	0.2	5	1,2,4,6,10
50.4	006-0016	FBPI	244	300	1	1	1			5					30	5	0.2	5	2,4,6,8,10
50.4	006-0017	WBPI	44		1	1	1			5					30	5	0.2	5	1,2,4,6,10
50.4	006-0017	WBPI	244	300	1	1	1			5					30	5	0.2	5	2,4,6,8,10
	006-0124	ER	44		1	1	1			5					30		1.1	44	1,2,4,5,10
	006-0124	MEDIAN	350						2										7
52.1	006-0124	WR	44				1								30		1.1	44	2,5,10
52.2	NO STRUCTURE	WBPI	50		1	1				5									1,4
54	006-0151	EBDL	44				1								30		1.1	44	2,5,10
54	006-0151	FBPI	200	300	1	1				5					30		1.1	44	1,4,5,10
54	006-0152	WBPI	44				2										1.1	44	1,2,5
54	006-0152	WBPI	200	300	1	1	1			5							1.1	44	1,2,4,5
	006-0116	ER	94		1	1	1			5	1.4			167			1.1	44	
	006-0116	MEDIAN	350						2										7
54.4	006-0116	WR	44				1										1.1	44	2,5
54.9	NO STRUCTURE	EBDL	50		1	1				5									1,4
55.2	NO STRUCTURE	WBPI	50		1	1													1,4
	006-0162	ER																	NO WORK
	006-0162	MEDIAN	400						2		5			675					7,9
56.3	006-0162	WR																	NO WORK
59.9	SIGN TRUSS	MEDIAN	150						2										7,11
	006-0131	ER	138		1	1	2			5							2.2	88	1,2,4,5
	006-0131	MEDIAN	285						2										7
60.3	006-0131	WR	94		1	1	1			5							1.1	44	1,2,4,5
60.5		EBDL	50		1	1				5									7,11
60.5	SIGN TRUSS	MEDIAN	150						2										NO WORK
	006-0038	ER																	7
	006-0038	MEDIAN	100						2										NO WORK
60.7	006-0038	WR																	NO WORK
	006-0039	ER																	NO WORK
	006-0039	MEDIAN	100						2										7
60.7	006-0039	WR																	NO WORK
61	SIGN TRUSS	MEDIAN	150						2										7,11
61.2	NO STRUCTURE	EBDL	50		1	1													1,4
	006-0127	ER	94		1	1	1			5							1.1	44	1,2,4,5
	006-0127	MEDIAN	360						2										7
62.2	006-0127	WR	94		1	1	1			5							1.1	44	1,2,4,5
62.3	SIGN TRUSS	MEDIAN	300						2										7
	006-0132	ER	44				1										1.1	44	2,5
	006-0132	MEDIAN	200						2										7
63.5	006-0132	WR	94		1	1	1			5							1.1	44	1,2,4,5
65.3	SIGN TRUSS	MEDIAN	150						2										7,11
	006-0129	ER	94		1	1	1			5							1.1	44	1,2,4,5
	006-0129	MEDIAN	290						2										7
66.4	006-0129	WR	88				2										2.2	88	2,5
	006-0133	ER	94		1	1	1			5							1.1	44	1,2,4,5
	006-0133	MEDIAN	400						2										7
67.5	006-0133	WR	94		1	1	1			5							1.1	44	1,2,4,5
72.9	SIGN TRUSS	MEDIAN	200						2	15		75	2						3,7,12
			11911	3000	46	46	56	12	48	225	6.4	150	4	842	1080	80	65.86	2532	

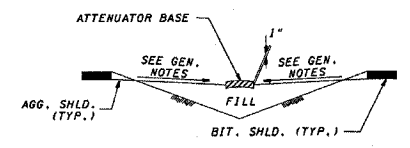
SCOPE OF WORK LEGEND: 1.REM DEFICIENT E.S. AND REPLACE W/TYPE 1 E.S. 2. REM DEFICIENT END SECTION/REPLACE W/TYPE 6 E.S. 3.ADD PIPE CULVERT NEAR PIER FOR DRAINAGE 4. ADD FURNISHED EXCAVATION FOR TBT, T1 (SP) TO MEET STD 630301
 5. PLACE TYPE B CURB UNDER EXIST. OR PROP. T6 END SECT 6. REMOVE 5' FO TAPERED CURB AND PLACE NEW C&G UNDER ALL OF TYPE 6 E.S. 7. REMOVE MEDIAN G.R. AND REPLACE W/IMP. ATTN.
 8. REMOVE TAPERED MEDIAN G.R. REPLACE WITH TANGENT G.R. AND TYPE 1 (SP) TANGENT E.S. 9. ADD CONCRETE TO PIER CAP 10. REMOVE AND RE-ERECT G.R. FOR TYPE B CURB PLACEMENT 11. PLACE PIPE CULVERT AT CENTER PIER FOR DRAINAGE
 12. PLACE EMBANKMENT FOR IMP. ATTN SO THEY WILL BE AT 1:10 SLOPE
 NOTE--EXISTING GR IN BITUMINOUS STABILIZATION FOR 006-0124 EBDL. REMOVE AND INSERT NEW END SECTION THROUGH EXISTING STABLIZATION-COST INCLUDED IN THE PRICE OF TBT, T1 (SP) TANG.
 NOTE- NO CURB TO BE PLACE NEAR STRUCTURES 006-0007,006-0008,006-0009,006-0010,006-0011,006-0012-THESE BRIDGES TO HAVE NEW DECKS WITH APPROACH PAVEMENT WITHIN A YEAR ON A SPERERATE CONTRACT

FILE NAME =	USER NAME = braboypa	DESIGNED -	REVISED -	STATE OF ILLINOIS DEPARTMENT OF TRANSPORTATION	SCHEDULES	F.A.I. RTE.	SECTION	COUNTY	TOTAL SHEETS	SHEET NO.	
ca:\projects\ed01208\details.dgn	PLOT SCALE = 50,0000' / IN.	DRAWN -	REVISED -			80	*	BUREAU	8	5	
PLOT DATE = Oct 25, 2007 - 01:24:06 PM	DATE -	CHECKED -	REVISED -			D3 INTERSTATE SAFETY 2008-2 CONTRACT NO. 66740					
		DATE -	REVISED -			FED. ROAD DIST. NO. - ILLINOIS FED. AID PROJECT					



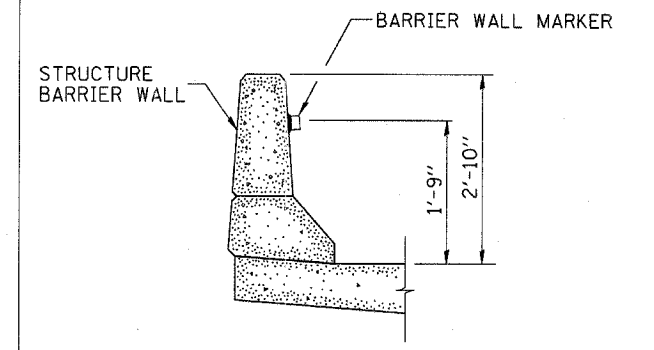
- GENERAL NOTES**
1. THE 10:1 SLOPE CONTROLS NOSE OF ATTENUATOR BASE ELEVATION.
 2. ATTENUATOR BASE GRADE PARALLELS EDGE OF PAVEMENT GRADE.
 3. SLOPE ADJACENT TO ATTENUATOR BASE SHALL BE 10:1 OR FLATTER.

INERTIAL BARRIER LAYOUT AND GRADING PLAN

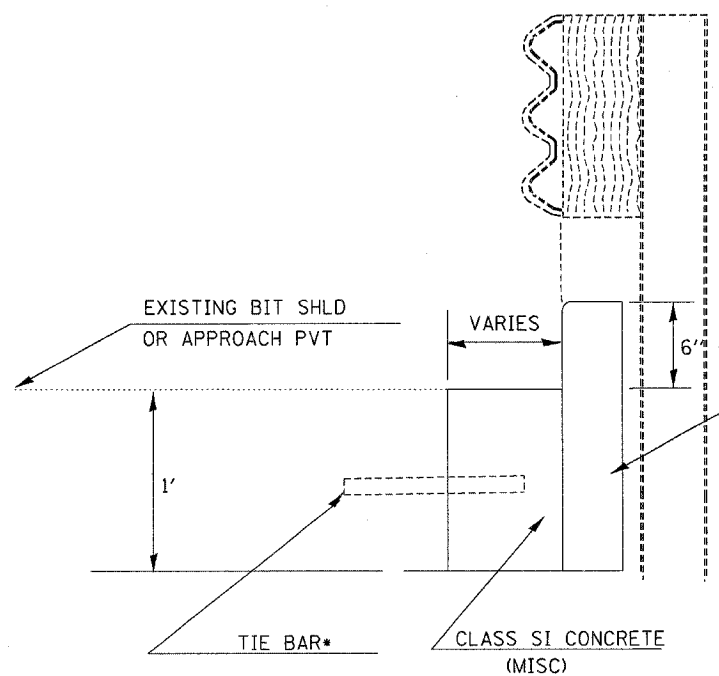


SECTION A - A

ALL EXISTING AREAS WHERE ATTENUATORS WILL BE PLACED SHOULD ALREADY MEET THESE GRADING REQUIREMENTS EXCEPT FOR THE TRUSS NEAR EXIT 73



BARRIER WALL MARKER

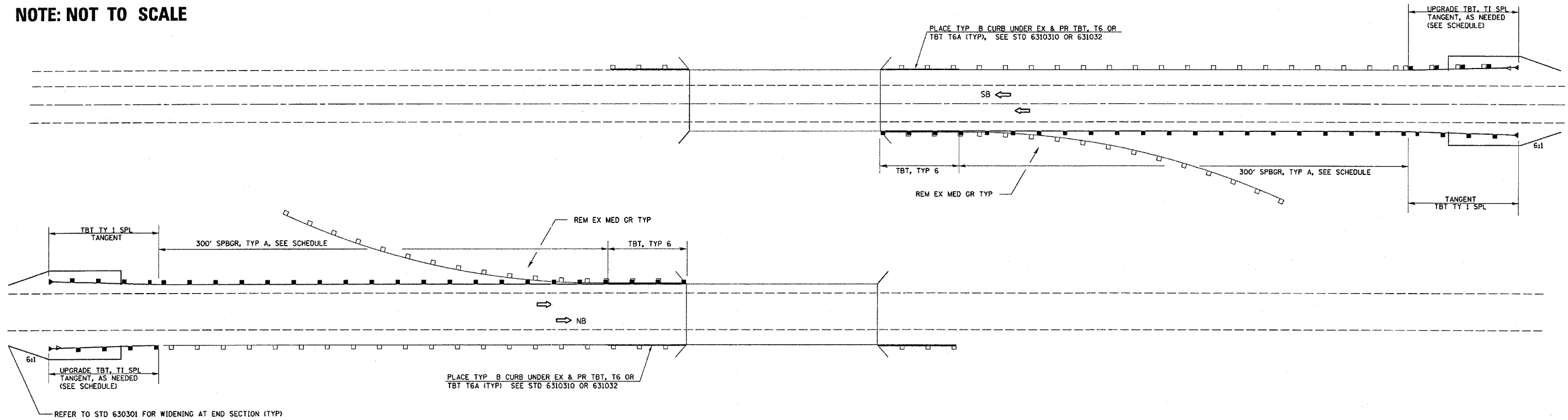


CLASS SI CONC (MISC)

*NEEDED ONLY WHEN ABUTTING CONCRETE OR COMPOSITE PAVEMENT NEEDED EVEN IF NO GUTTER IS NEEDED AND ONLY TYPE B CURB IS USED (INCLUDED IN THE PRICE OF TYPE B CURB OR CLASS SI CONC (MISC))

**6" AS SHOWN ON STANDARD EXCEPT AT PIER LOCATIONS WHERE IT SHALL BE 7 1/2" TO ACCOUNT FOR FUTURE OVERLAYS

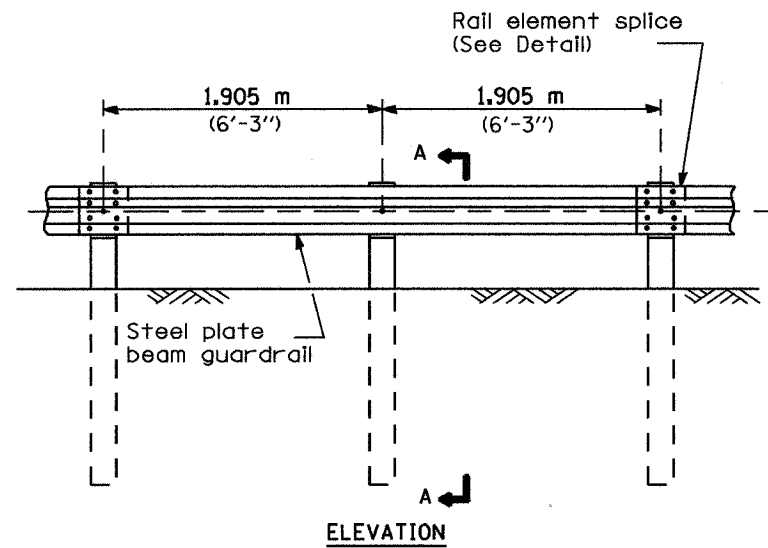
NOTE: NOT TO SCALE



TYPICAL GUARDRAIL AND CURB TREATMENT AT STRUCTURE

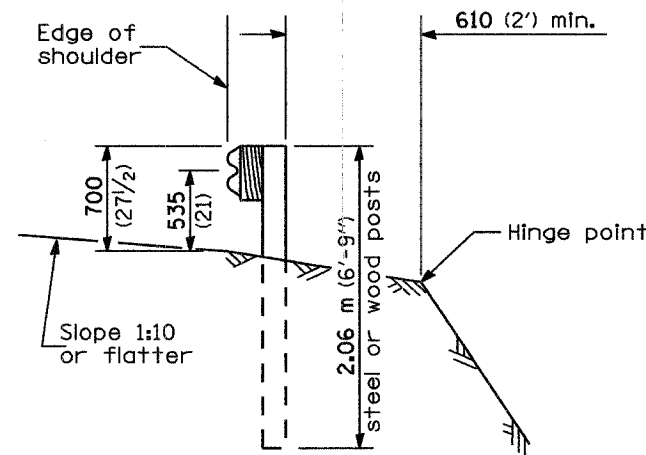
FILE NAME = c:\projects\ed81288\details.dgn	USER NAME = braboypc	DESIGNED - ---	REVISED - ---	STATE OF ILLINOIS DEPARTMENT OF TRANSPORTATION	GUARDRAIL DETAIL		F.A.I. RTE. 80	SECTION *	COUNTY BUREAU	TOTAL SHEETS 8	SHEET NO. 6
PLOT SCALE = 50,0000' / IN.	CHECKED - ---	REVISED - ---	REVISED - ---		SCALE: _____	SHEET NO. ___ OF ___ SHEETS	STA. _____ TO STA. _____	D3 INTERSTATE SAFETY 2008-2		CONTRACT NO. 66740	
PLOT DATE = Oct 25, 2007 - 01:24:17 PM	DATE - _____	REVISED - ---	REVISED - ---		FED. ROAD DIST. NO. _____ ILLINOIS FED. AID PROJECT						

F.A.R.T. RTE.	SECTION	COUNTY	TOTAL SHEETS	SHEET NO.
80	03 IMPROVEMENT SAFETY	BUREAU		6A
FED. ROAD DIST. NO.	ILLINOIS FED. AID PROJECT			
	CONTRACT # 66740			

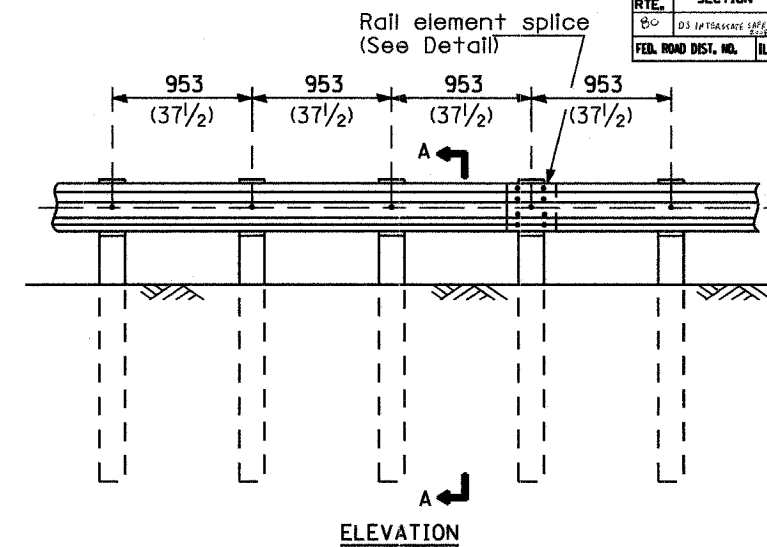


TYPE A

1.905 m (6'-3") Typical post spacing

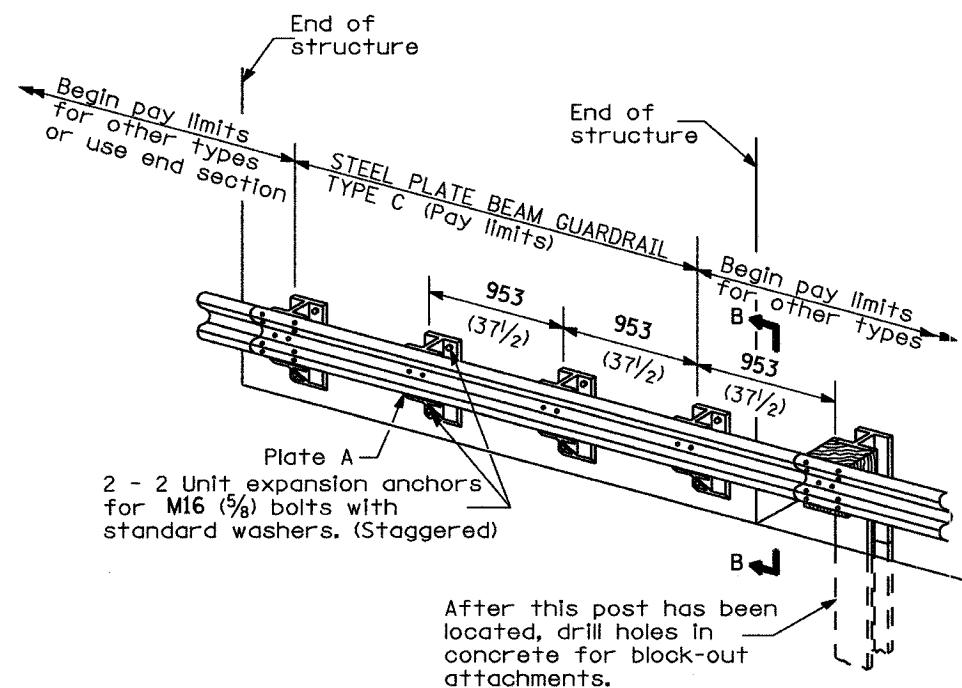


SECTION A-A



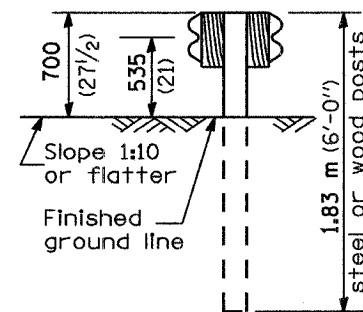
TYPE B

953 (37 1/2) Closed post spacing

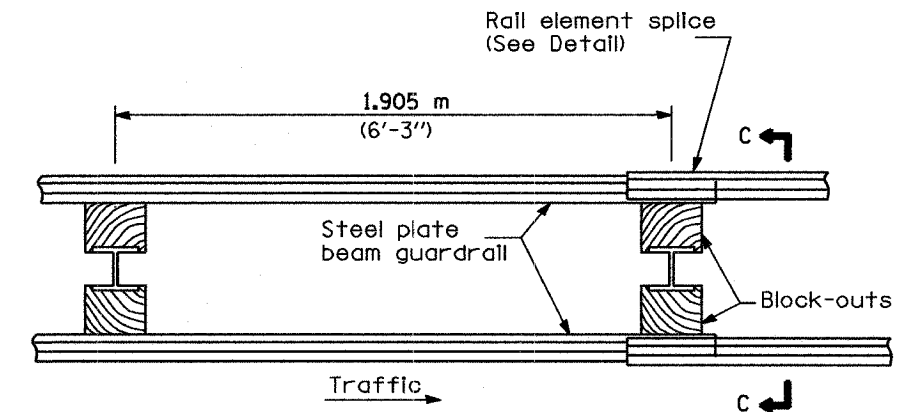


TYPE C

953 (37 1/2) Block-out spacing



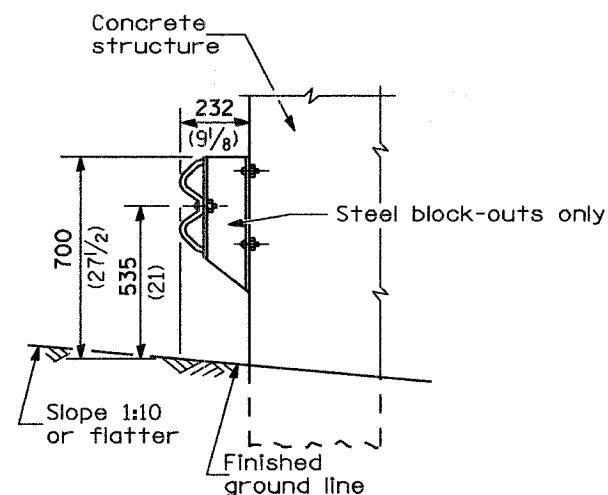
SECTION C-C



PLAN

TYPE D

Double steel plate beam guardrail
1.905 m (6'-3") typical post spacing



SECTION B-B

GENERAL NOTES

All slope ratios are expressed as units of vertical displacement to units of horizontal displacement (V:H).

All dimensions are in millimeters (inches) unless otherwise shown.

The existing steel posts may be drilled to match the bolt pattern shown herein for the wood block-out, or a new steel post shall be provided.

This detail is applicable to the guardrail system used prior to January 1, 2007. For details on the Midwest Guardrail System, see Standard 630001.

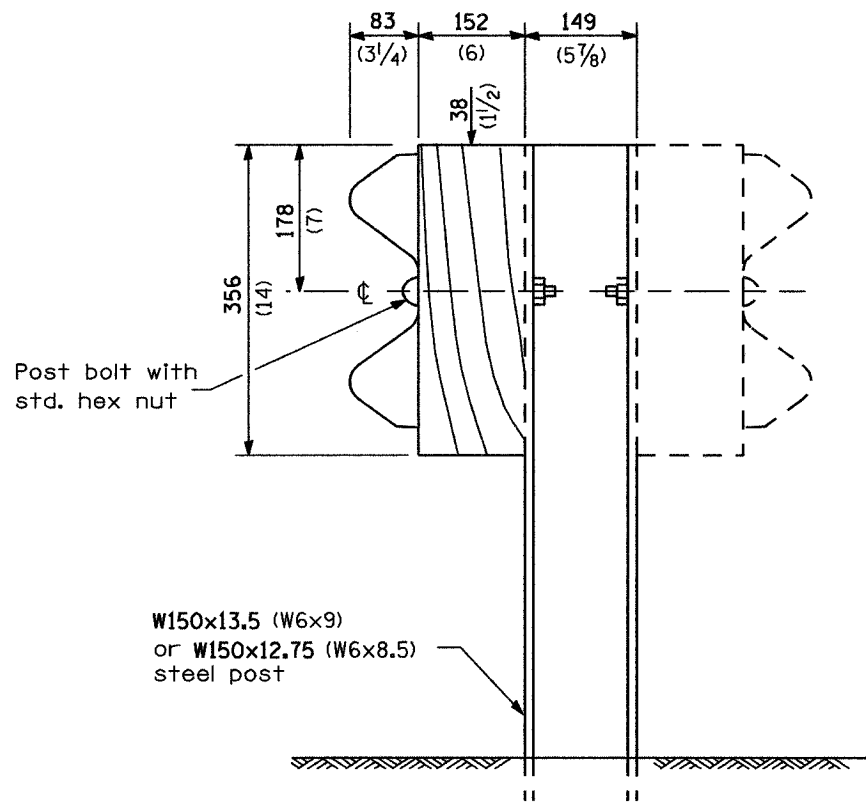
REMOVE AND REERECT STEEL PLATE BEAM GUARDRAIL

(Sheet 1 of 4)

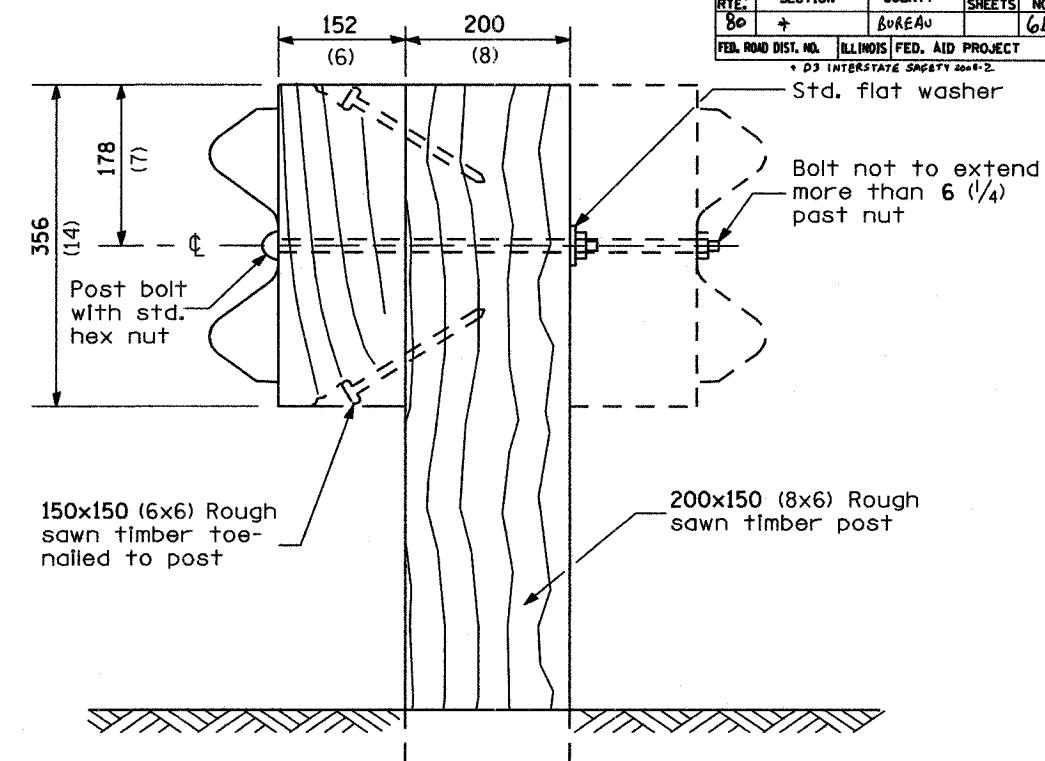
DETAIL

F.A.T. RTE.	SECTION	COUNTY	TOTAL SHEETS	SHEET NO.
80	+	BUREAU		6B

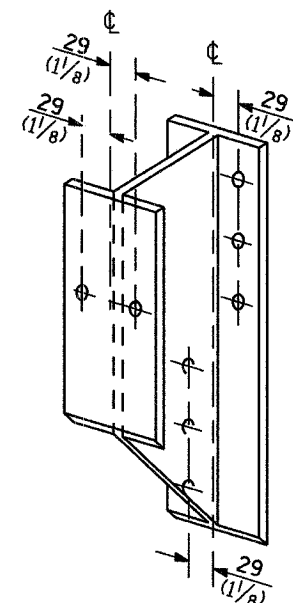
FEL. ROAD DIST. NO. ILLINOIS FED. AID PROJECT
 * D3 INTERSTATE SAFETY 2004-2



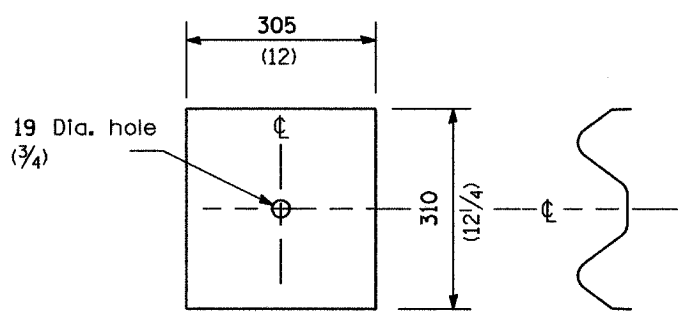
STEEL POST CONSTRUCTION



WOOD POST CONSTRUCTION



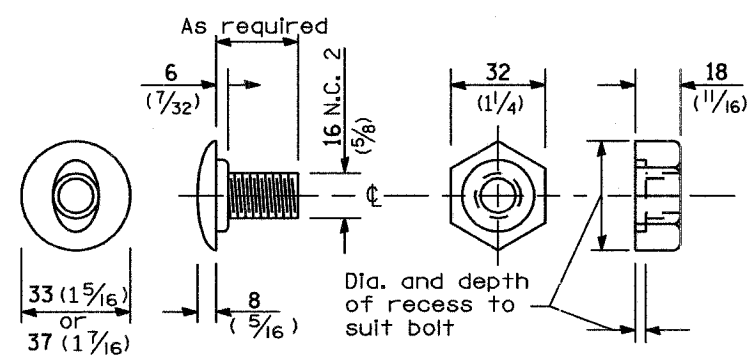
STEEL BLOCK-OUT DETAIL



NOTE

Plate A shall be placed between rail element and block-out at non-splice mounting points only when steel block-outs are used.

PLATE A



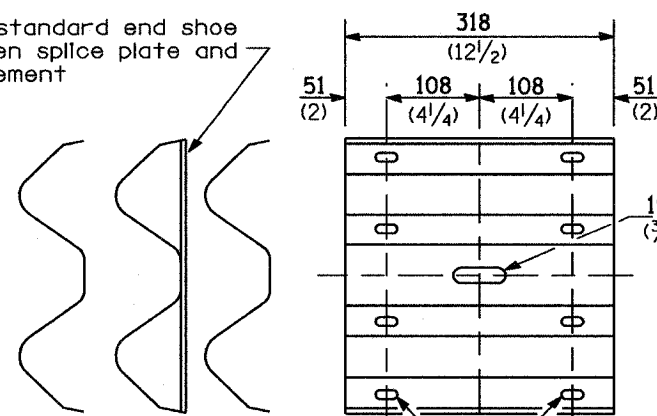
POST OR SPLICE BOLT & NUT

**REMOVE AND REERECT
 STEEL PLATE BEAM GUARDRAIL**
 (Sheet 2 of 4)

DETAIL

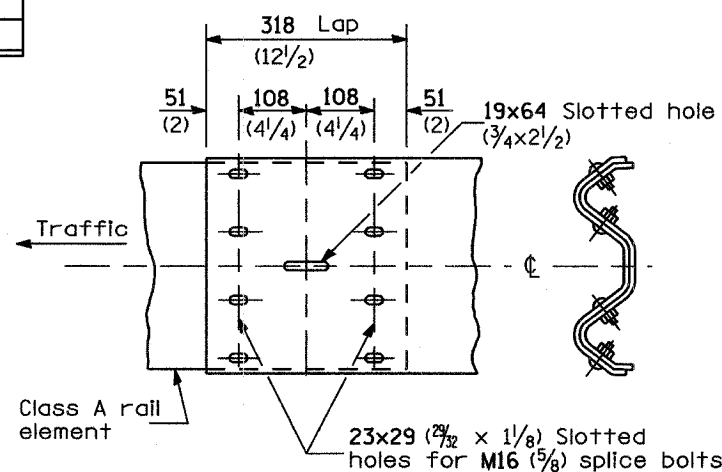
F.A.T. RITE.	SECTION	COUNTY	TOTAL SHEETS	SHEET NO.
80	*	BUREAU		6C
FED. ROAD DIST. NO.		ILLINOIS	FED. AID PROJECT	
* D3 INTERSTATE SAFETY 2008-L				

Place standard end shoe between splice plate and rail element

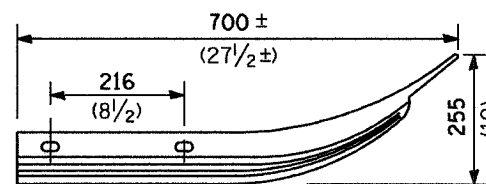


23x29 Slotted holes (7/32 x 1/8)

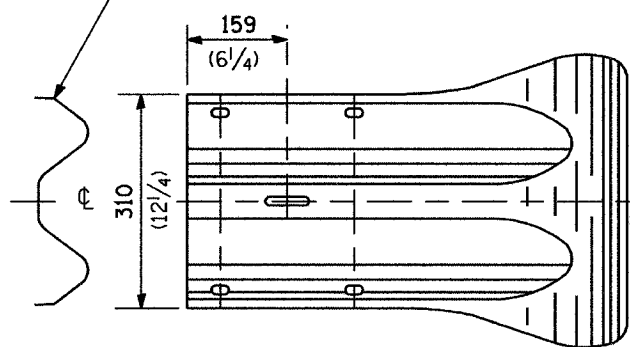
SPLICE PLATE



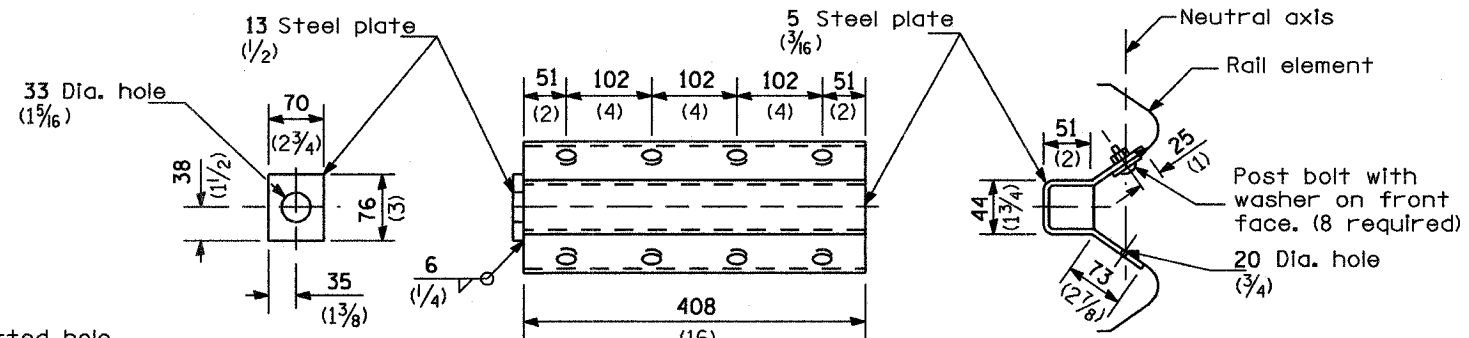
RAIL ELEMENT SPLICE



Class A rail element



END SECTION

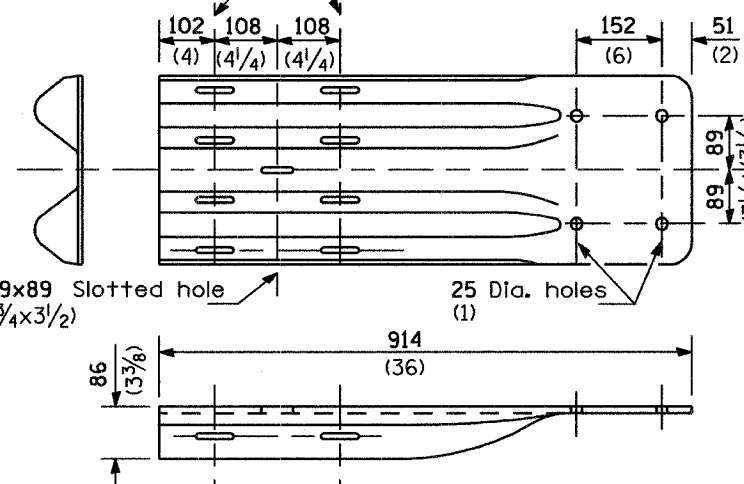


NOTE

Anchor plate T shall be used to attach cable assembly to guardrail when required on traffic barrier terminals.

ANCHOR PLATE T DETAILS

23x76 (7/32 x 3) Slots for splice bolts with std. galv. washer placed under locknut



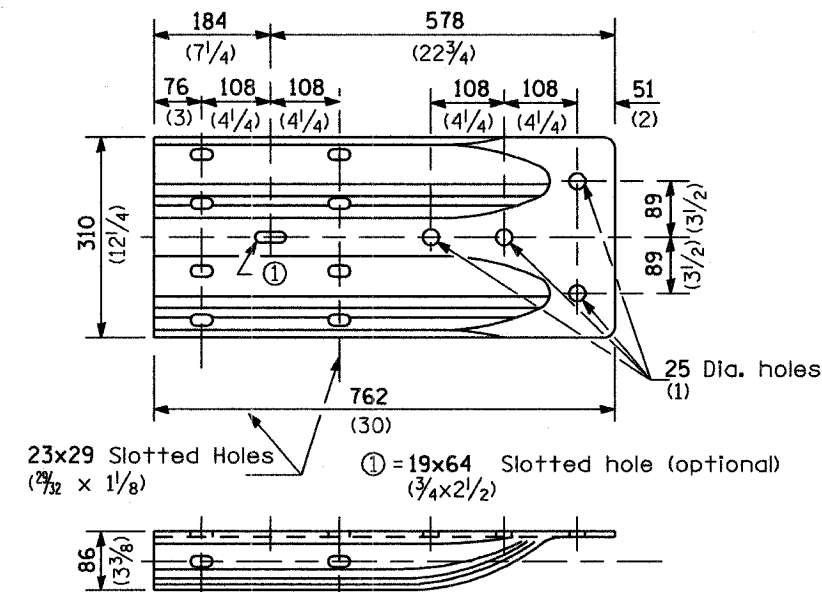
NOTE

When end shoe is attached to a bridge parapet which has an expansion joint, the bolts shall be provided with a locknut or double nut and shall be tightened only to a point that will allow guardrail movement.

The standard end shoe shall be attached to the concrete with pre-drilled or self-drilling anchor bolts. The anchor cone shall be set flush with the surface of the concrete.

Externally threaded studs protruding from the surface of the concrete will not be permitted.

END SHOE

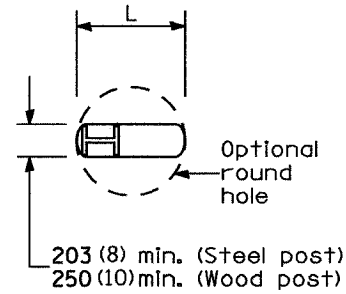


ALTERNATE END SHOE

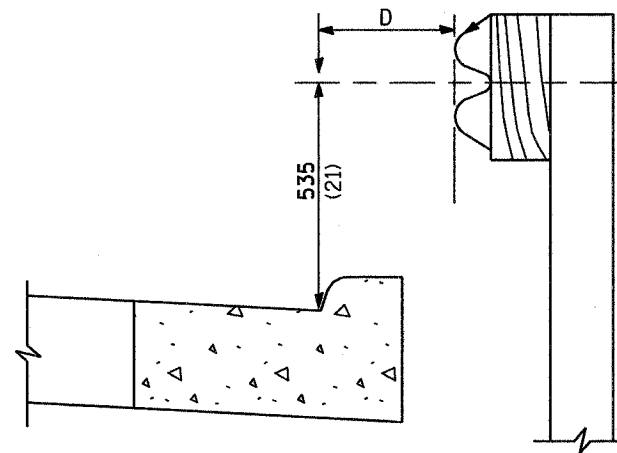
REMOVE AND REERECT STEEL PLATE BEAM GUARDRAIL

(Sheet 3 of 4)

DETAIL



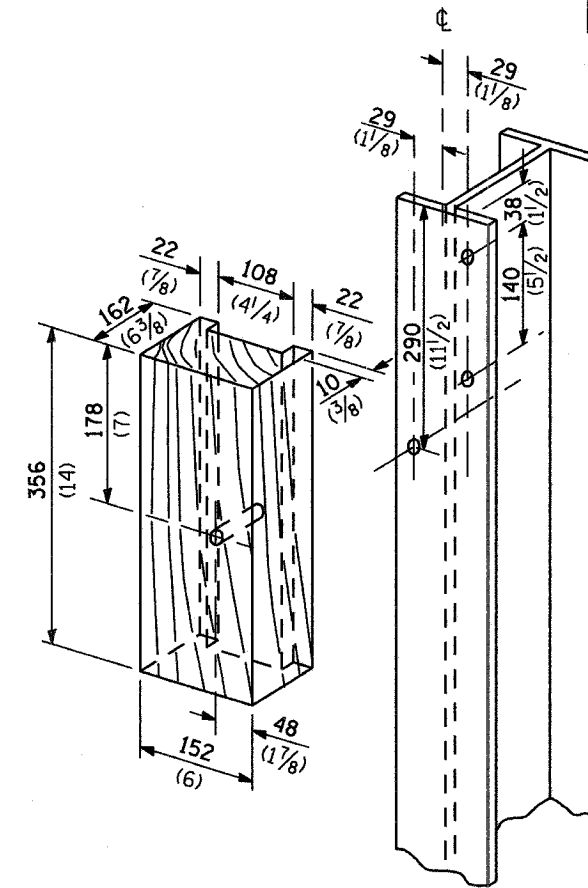
PLAN



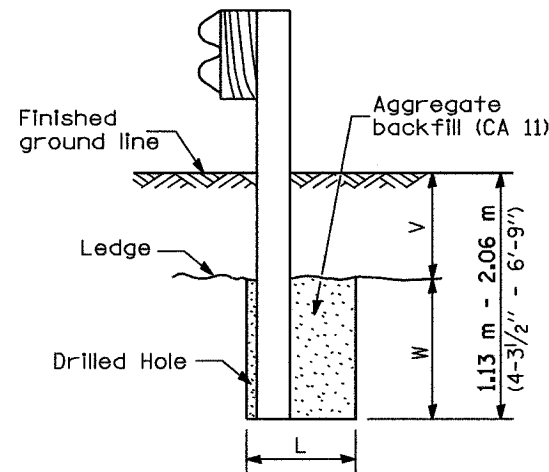
Note:
If it is necessary for D to be more than 300 (12) and less than 3.0 m (10'-0") type M-5 (M-2) curb and gutter (Std. 606001) shall be used in front of and in advance of the guardrail.

GUARDRAIL PLACED BEHIND CURB

(D = 0 desirable to 300 (12) maximum)



WOOD BLOCK-OUT AND STEEL POST DETAILS

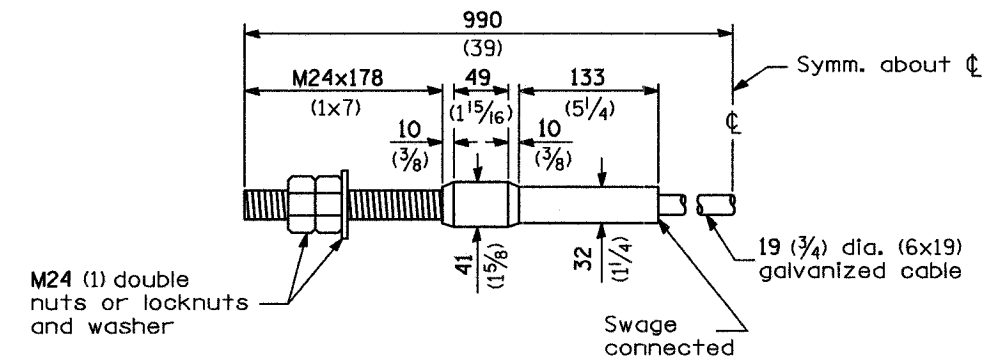


Note:
Ledge line is top of rock ledge or hard slag fill.

ELEVATION

FOOTING FOR POST WHEN IMPERVIOUS MATERIAL IS ENCOUNTERED

V	W	L	
		Steel Post	Wood Post
0 - 460 (0 - 18)	610 (24)	530 (21)	580 (23)
>460 - 825 (>18 - 41.5)	305 (12)	203 (8)	250 (10)
>825 - 1.13 m (>41.5 - 53.5)	305 - 0 (12 - 0)	203 (8)	250 (10)



CABLE ASSEMBLY

(18,100 kg (40,000 lbs.) min. breaking strength)
Tighten to taut tension.

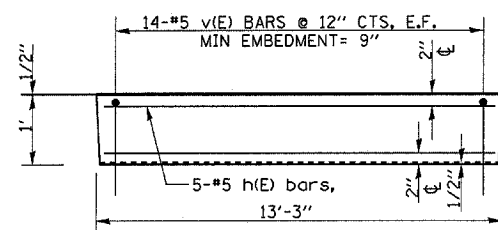
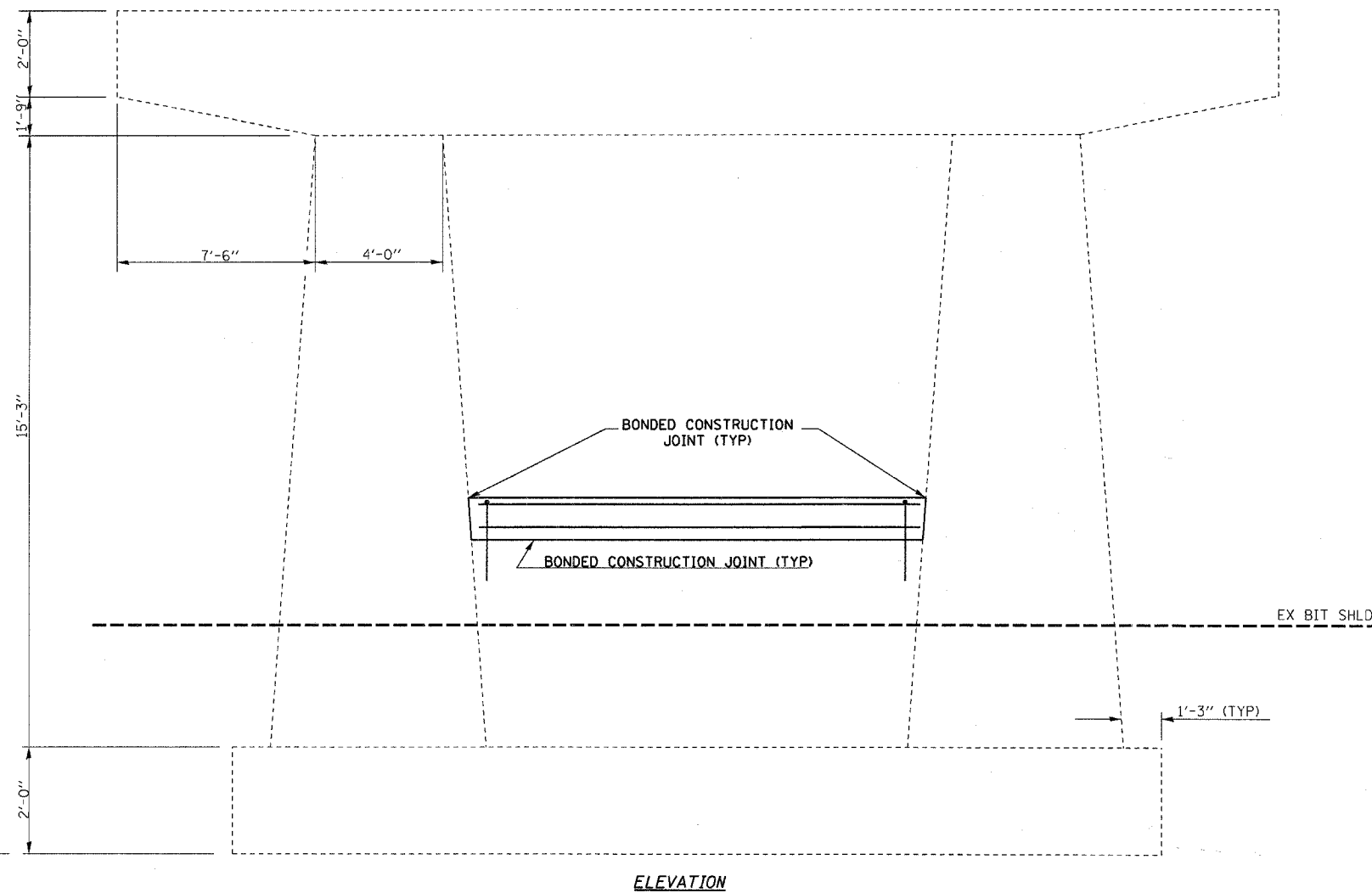
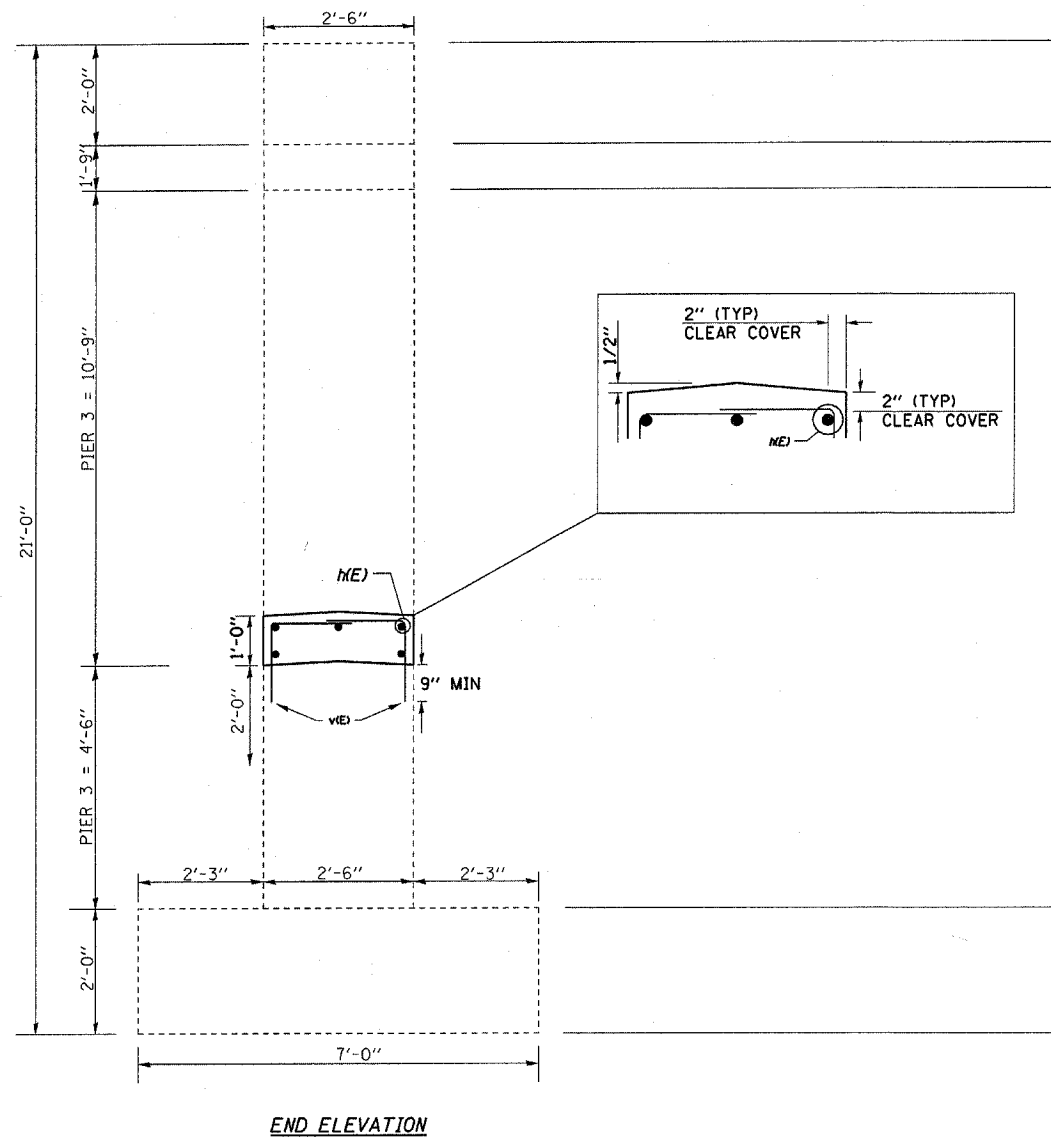
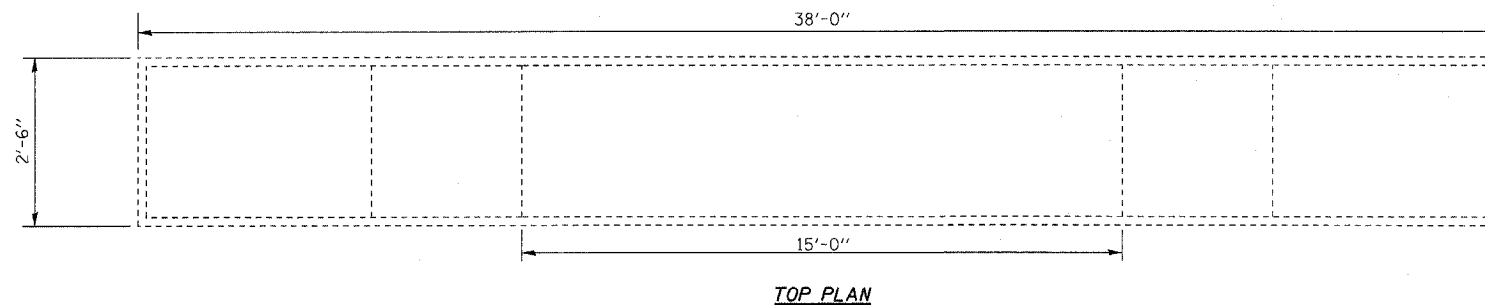
REMOVE AND REERECT STEEL PLATE BEAM GUARDRAIL

(Sheet 4 of 4)

DETAIL

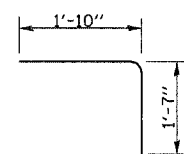
NOTE:

- 1.) DRILL & EPOXY GROUT v(E) BARS IN 9" (MIN) DRILLED HOLES ACCORDING TO SECTION 584 OF THE STANDARD SPECIFICATIONS.
- 2.) USE EXISTING PLANS INCLUDED TO AVOIDED DAMAGING LONGITUDINAL REINFORCEMENT IN THE EXISTING CRASHWALL WHILE DRILLING & EPOXY GROUTING v(E) BARS.
- 3.) ALL CRASH WALLS MUST BE A MINIMUM OF 2'-5" AND RAISED A MINIMUM OF 1'-0".



BAR	NO	SIZE	LENGTH	SHAPE
h(E)	5	#5	12'-11"	—
v(E)	28	#5	3'-5"	└
ITEM		UNIT	Quantity	
CONCRETE STRUCTURES		CU YDS	1.4	
REINFORCEMENT BARS, EPOXY COATED		POUNDS	167	

BILL OF MATERIAL



fc = 3,500 psi
FY = 60,000 PSI (REINFORCEMENT)

DESIGN STRESSES (NEW)

FAI RTE 80
INTERSTATE SAFETY 2008-2
BUREAU CO / STA 1038+66.70
SN 006-0116

PIER 3
CRASH WALL EXTENSION

FILE NAME	USER NAME	DESIGNED	REVISED
ci:\projects\ed01208\details	braboyco	dgn	-
PLOT SCALE	1/8" = 1'-0"	CHECKED	REVISED
PLOT DATE	01/25/2007	DATE	REVISED

STATE OF ILLINOIS
DEPARTMENT OF TRANSPORTATION

GENERAL NOTES

SCALE: _____ SHEET NO. ____ OF ____ SHEETS STA. 1038+66.70

F.A.I. RTE.	SECTION	COUNTY	TOTAL SHEETS	SHEET NO.
80	*	BUREAU	8	7
D3 INTERSTATE SAFETY 2008-2			CONTRACT NO. 66740	
FED. ROAD DIST. NO. ILLINOIS			FED. AID PROJECT	

