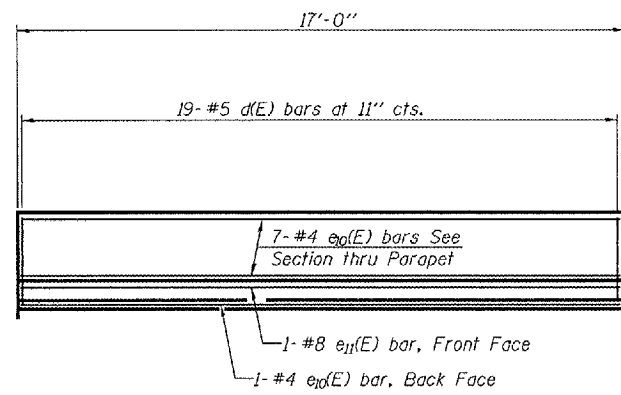


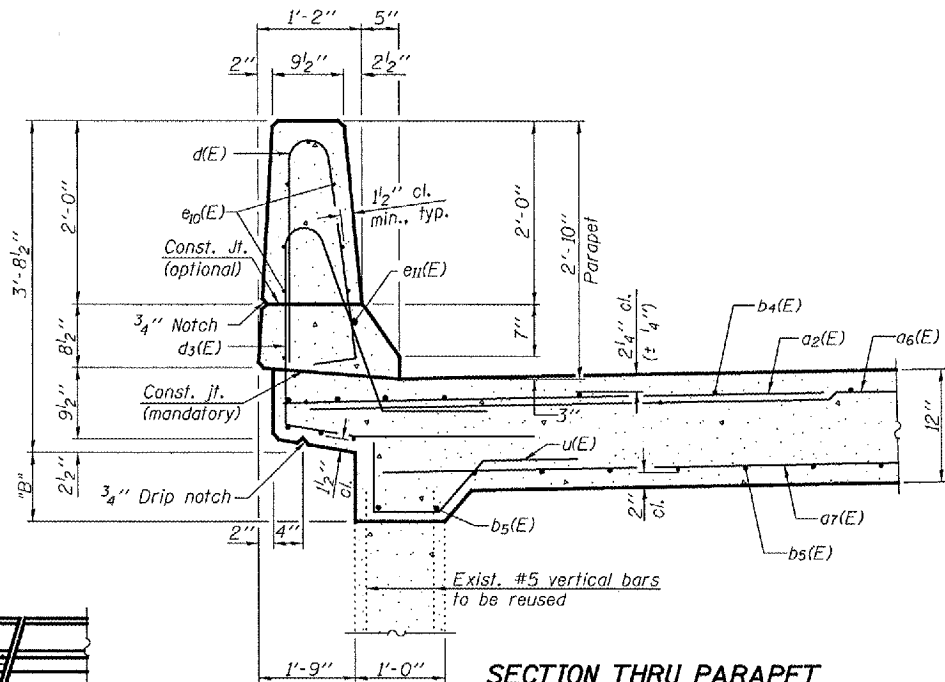
STATE OF ILLINOIS  
DEPARTMENT OF TRANSPORTATION

ROUTE NO.	SECTION	COUNTY	SHEET	SHEET	SHEET NO. 12
F.A.P. 313	18-HB	KNOX	70	35	23 SHEETS
FED. ROAD DIST. NO. 7		ILLINOIS	FED. AID PROJECT		
Contract #68190					

\*\*For v(E) bars see sheet 21 of 23. (v(E) billed with abut.)



INSIDE ELEVATION OF PARAPET

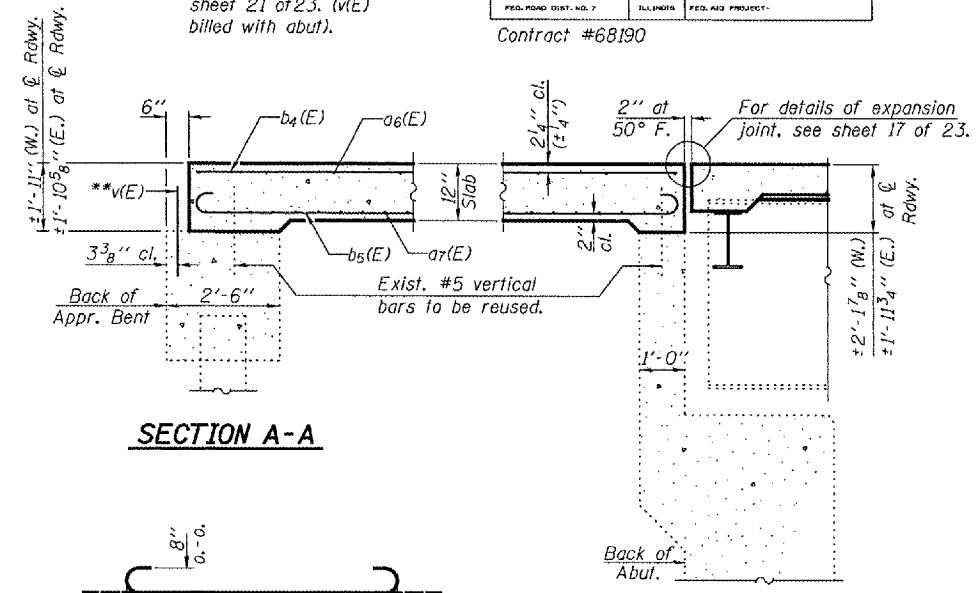


SECTION THRU PARAPET  
See table for dimension "B"

TABLE FOR DIMENSION "B"

Location	*B*
West Vault	North Side Varies from $\pm 10\frac{1}{8}$ " to $\pm 1'-0\frac{1}{8}$ "
South Side	Varies from $\pm 9\frac{1}{2}$ " to $\pm 1'-0\frac{3}{8}$ "
East Vault	North Side Varies from $\pm 9\frac{3}{8}$ " to $\pm 10\frac{3}{8}$ "
South Side	Varies from $\pm 9\frac{1}{2}$ " to $\pm 10\frac{1}{2}$ "

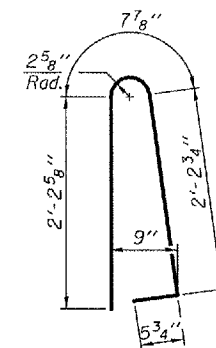
\*Dimension shown varies from beginning of approach span at bent to end of approach span at back of abutment.



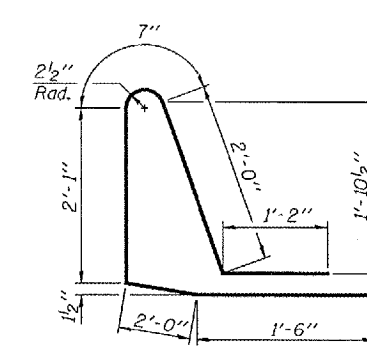
SECTION A-A

SECTION B-B

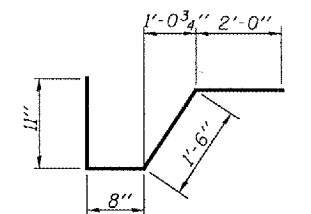
BAR b5(E)



BAR d(E)



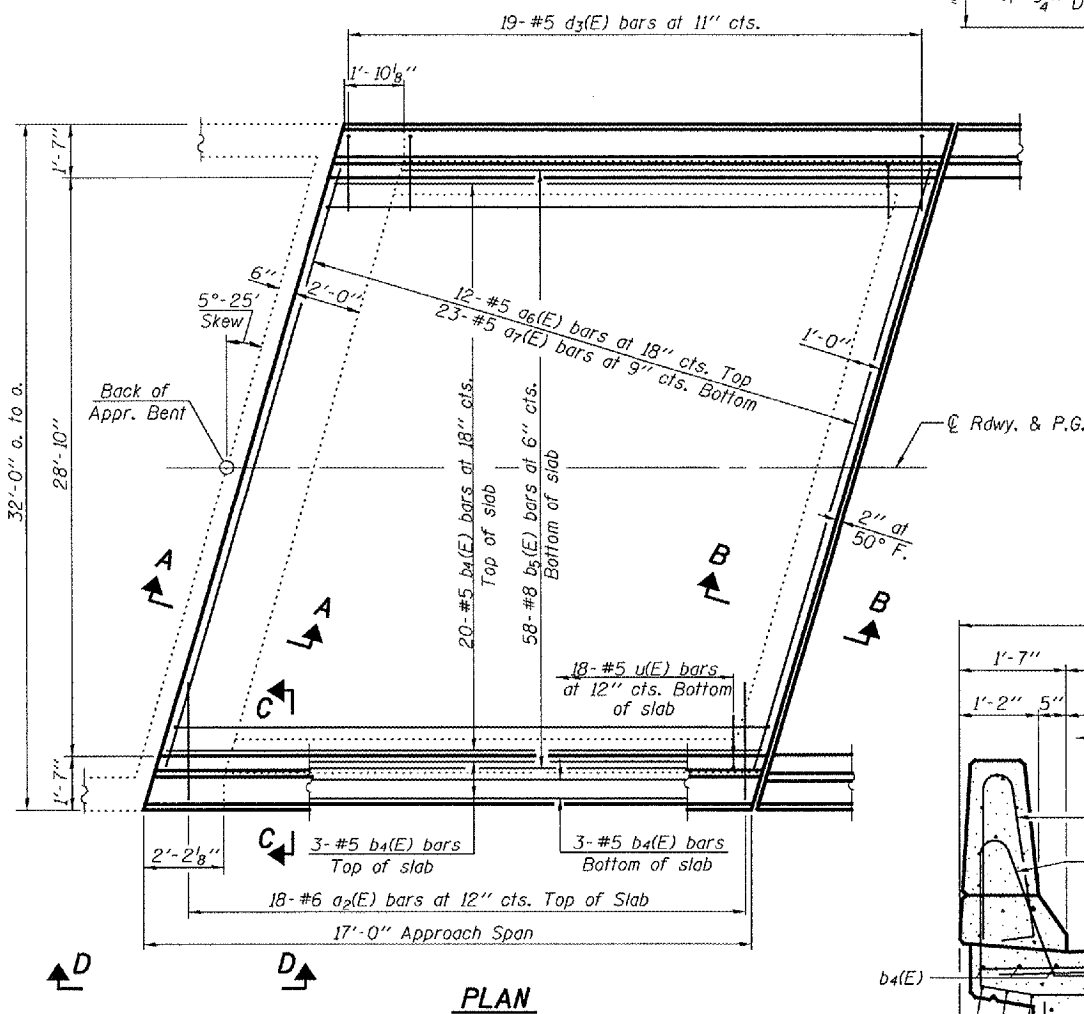
BAR d3(E)



BAR u(E)

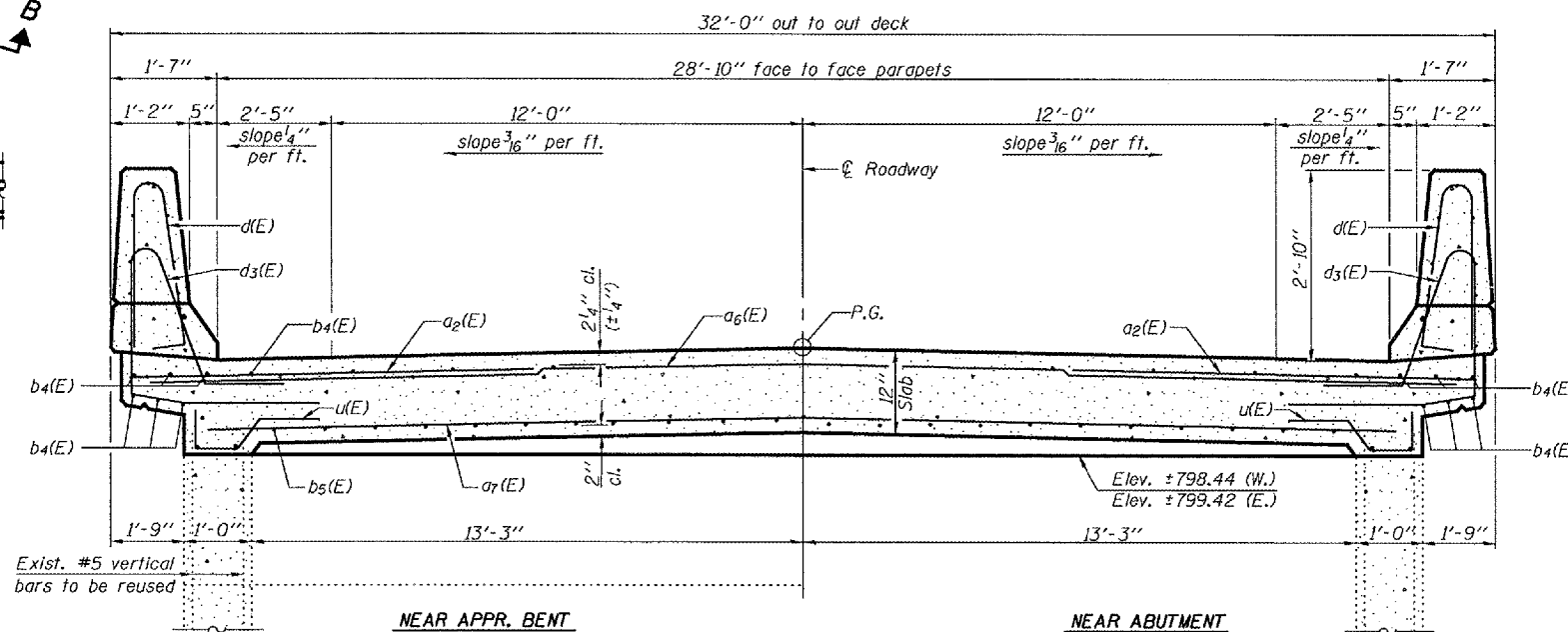
TWO APPROACH SPANS  
BILL OF MATERIAL

Bar	No.	Size	Length	Shape
a2(E)	72	#6	6'-0"	—
a6(E)	24	#5	31'-5"	—
a7(E)	46	#5	28'-4"	—
b4(E)	64	#5	16'-8"	—
b5(E)	116	#8	18'-6"	—
d(E)	76	#5	5'-7"	—
d3(E)	76	#5	9'-4"	—
ep(E)	32	#4	16'-8"	—
ep(E)	4	#8	16'-8"	—
u(E)	72	#5	5'-1"	—
Reinforcement Bars, Epoxy Coated		Pound	11740	
Concrete Superstructure		Cu. Yd.	57.0	



PLAN

Note: See sheet 13 of 23 for Section C-C and View D-D.



CROSS SECTION

DESIGNED Stephen M. Ryan	Nov. 20 2007
CHECKED Phillip R. Litchfield	EXAMINED Thomas J. Damagali
DRAWN R. Sommer	PASSED Ralph E. Anderson
CHECKED SMR/SEM	

APPROACH SPAN  
F.A.P. RT. 313 SECTION 18-HB  
KNOX COUNTY  
STATION 20+11.14  
STRUCTURE NO. 048-0069