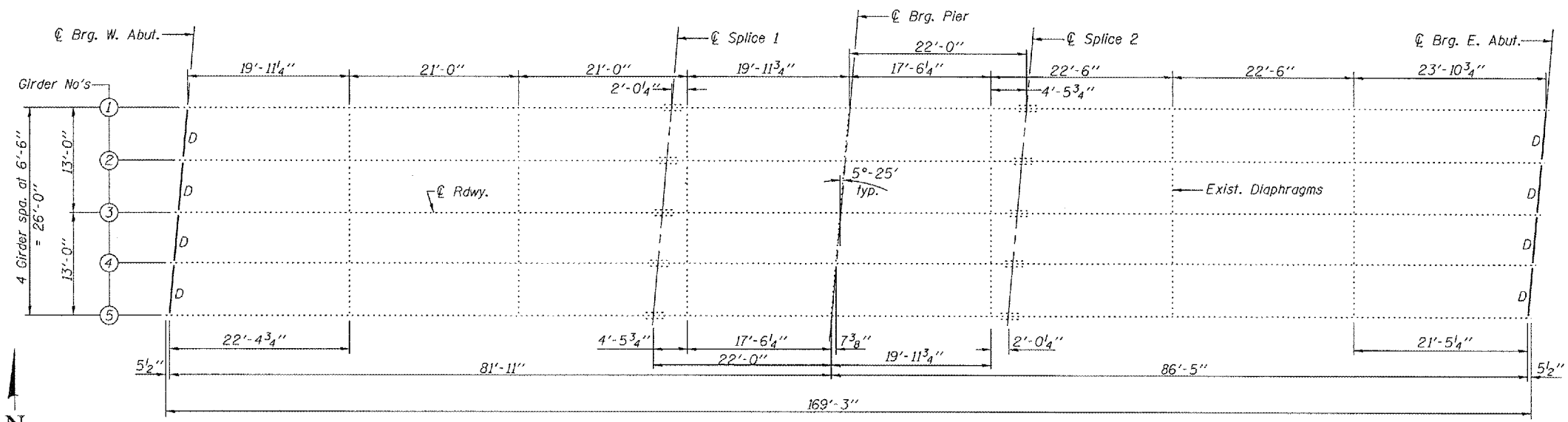


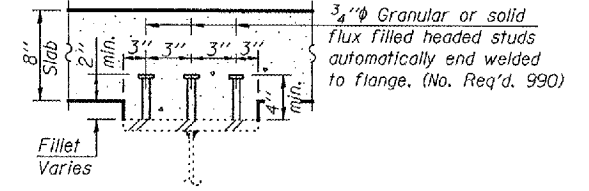
STATE OF ILLINOIS
DEPARTMENT OF TRANSPORTATION

ROUTE NO.	SECTION	COUNTY	SHEETS	NO.	SHEET NO. 15
F.A.P. 313	18-HB	KNOX	70	38	23 SHEETS
FED. ROAD DIST. NO. 7		ILLINOIS	FED. AID PROJECT		

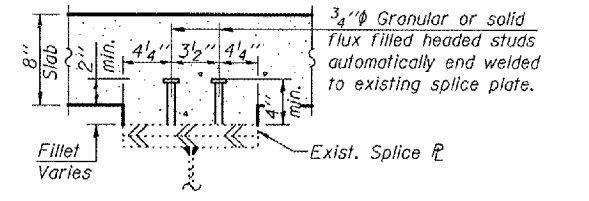
Contract #68190



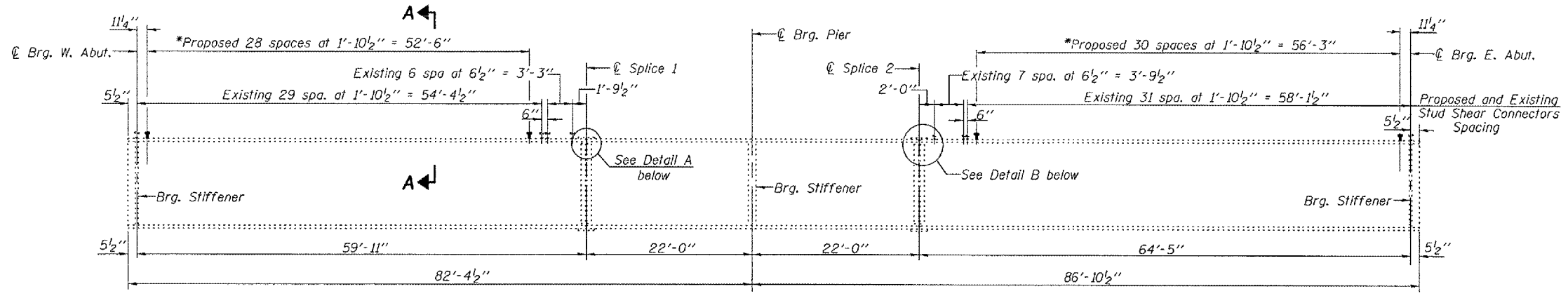
FRAMING PLAN



SECTION A-A

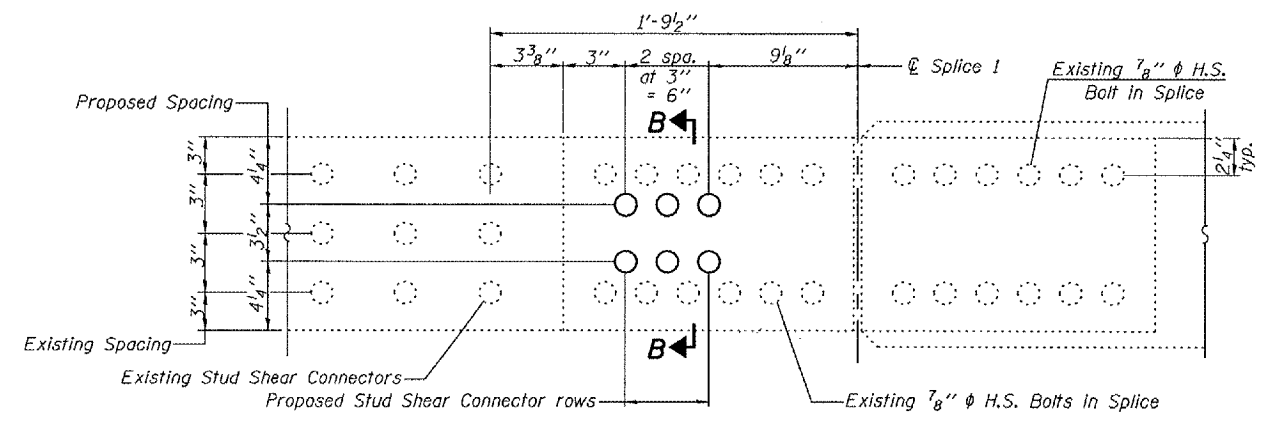


SECTION B-B



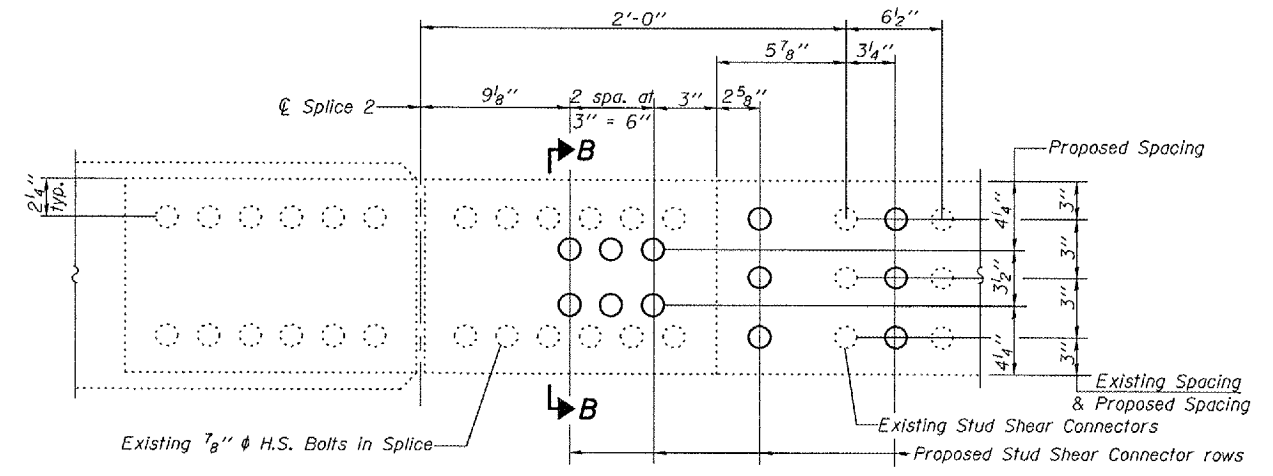
EXISTING GIRDER ELEVATION

*Place proposed stud shear connectors at mid-point between existing stud shear connectors for an alternating proposed and existing stud shear connector spacing of 11 1/4".



DETAIL A

(Plan View of Splice 1)



DETAIL B

(Plan View of Splice 2)

DESIGNED	Stephen M. Ryan
CHECKED	Phillip R. Litchfield
DRAWN	R. Sommer
CHECKED	SMR/SEM

Nov. 20 2007
EXAMINED *Thomas J. Demasalebi*
PASSED *Ralph E. Anderson*

STRUCTURAL STEEL
F.A.P. RT. 313 SECTION 18-HB
KNOX COUNTY
STATION 20+11.14
STRUCTURE NO. 048-0069