

F.A.P. RTE.	SECTION	COUNTY	TOTAL SHEETS	SHEET NO.
840	(121,122)RS-3	VERMILION	89	1

+4
93

STATE OF ILLINOIS
DEPARTMENT OF TRANSPORTATION
DIVISION OF HIGHWAYS

**PROPOSED
HIGHWAY PLANS**

FAP ROUTE 840 (IL 49)
SECTION (121,122)RS-3
VERMILION COUNTY
PROJECT NO. ACF-0840(057)

C-95-120-00

RESURFACING (3P) FROM FAST CREEK 2.1 MI. (S) OF
IROQUIOS CO. LINE TO US 136 (W) AND
BRIDGE REPAIR S.N. 092-0101
OVER UP RR 1.8 MI N OF US 136



LOCATION OF SECTION INDICATED THIS: -

STATE OF ILLINOIS
DEPARTMENT OF TRANSPORTATION
DIVISION OF HIGHWAYS

SUBMITTED 11/16 20 07

Joseph E. Cowell
DEPUTY DIRECTOR OF HIGHWAYS, REGION ENGINEER

Dec 7, 2007
Eric E. Haron
ENGINEER OF DESIGN AND ENVIRONMENT

Dec 7, 2007
Christine M. Reed
DIRECTOR OF HIGHWAYS, CHIEF ENGINEER

**PRINTED BY THE AUTHORITY
OF THE STATE OF ILLINOIS**

PROJECT ENGINEER: KEVIN TRAPP

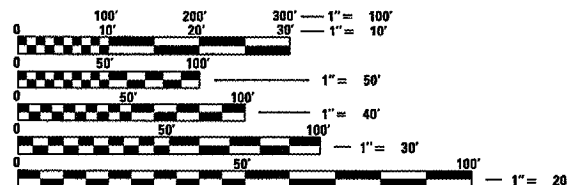
SQUAD LEADER: JEFF SHERER

DESIGNER: JULIE WEGER

FOR INDEX OF SHEETS, SEE SHEET NO. 2
FOR SUMMARY OF QUANTITIES, SEE SHEET NO. 4

CURRENT ADT
MINOR ARTERIAL
FAP 840 (IL 49) = 1,400 (2006)

DESIGN DESIGNATION
N/A



FULL SIZE PLANS HAVE BEEN PREPARED USING STANDARD
ENGINEERING SCALES. REDUCED SIZED PLANS WILL NOT
CONFORM TO STANDARD SCALES. IN MAKING MEASUREMENTS
ON REDUCED PLANS, THE ABOVE SCALES MAY BE USED.

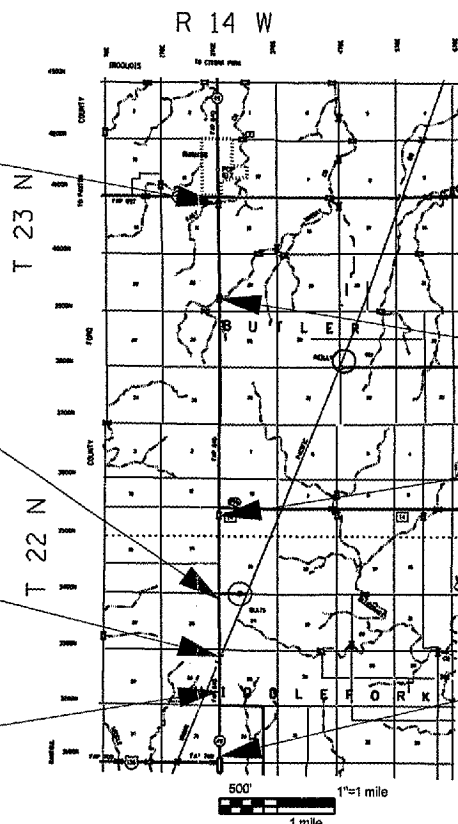
J.U.L.I.E.
JOINT UTILITY LOCATION INFORMATION FOR EXCAVATION
1-800-892-0123

END IMPROVEMENT
STA. 1280+10

STATION EQUATION
STA. 870+00(BK)=STA. 870+71(AH)

S.N. 092-0101 (BRIDGE REPAIR)
STA. 854+78 - 861+60

STATION EQUATION
STA. 837+24(BK)=STA. 837+20(AH)



S.N. 092-2026
(HMA RESURFACING)
STA. 1194+24

S.N. 092-2035
(HMA RESURFACING)
STA. 991+00

BEGIN IMPROVEMENT
STATION 765+00

TOTAL LENGTH = 51443.00 ft = 9.743 miles
NET LENGTH = 50761.00 ft = 9.614 miles