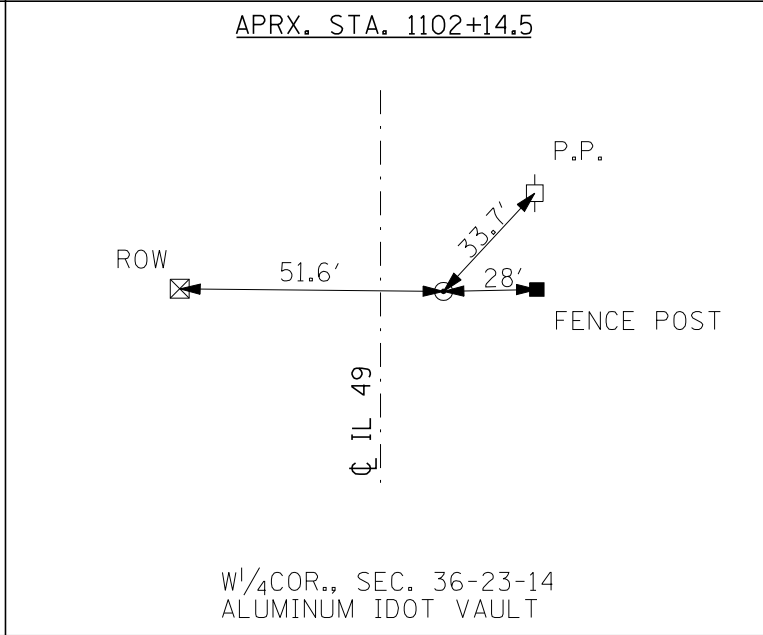
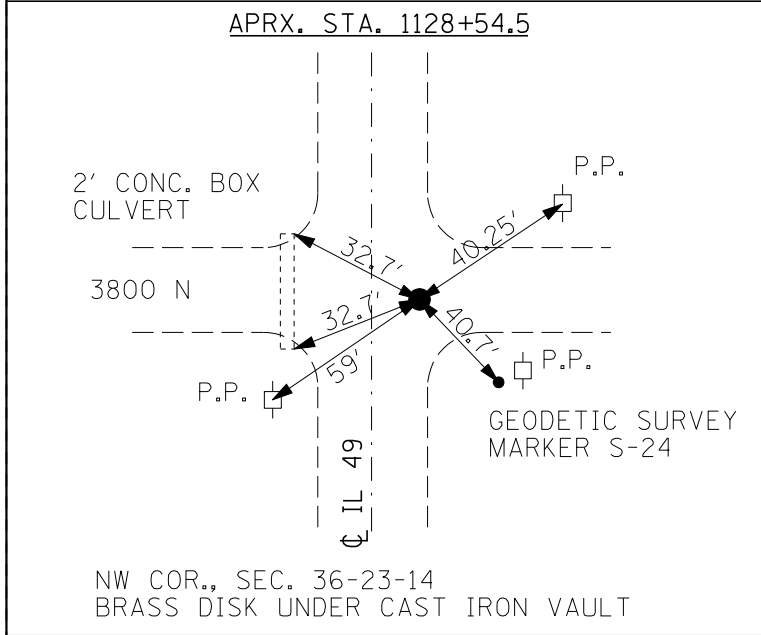
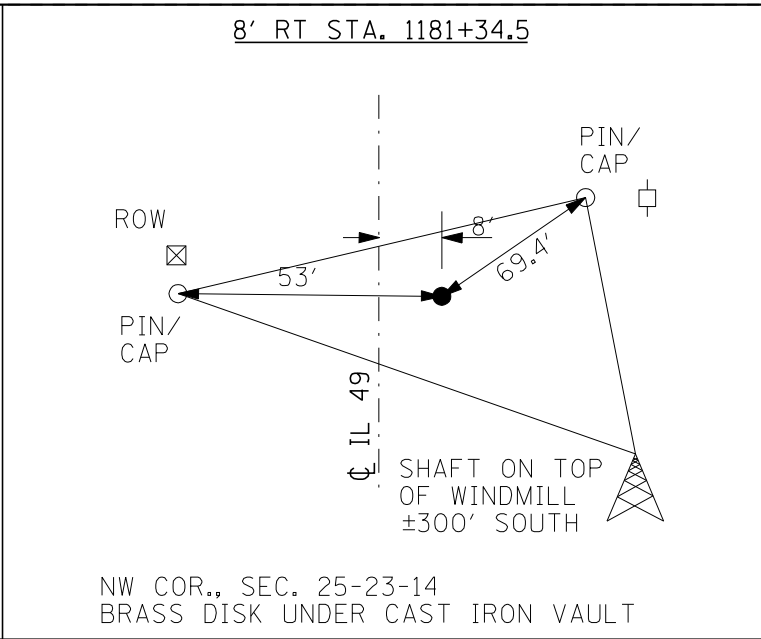
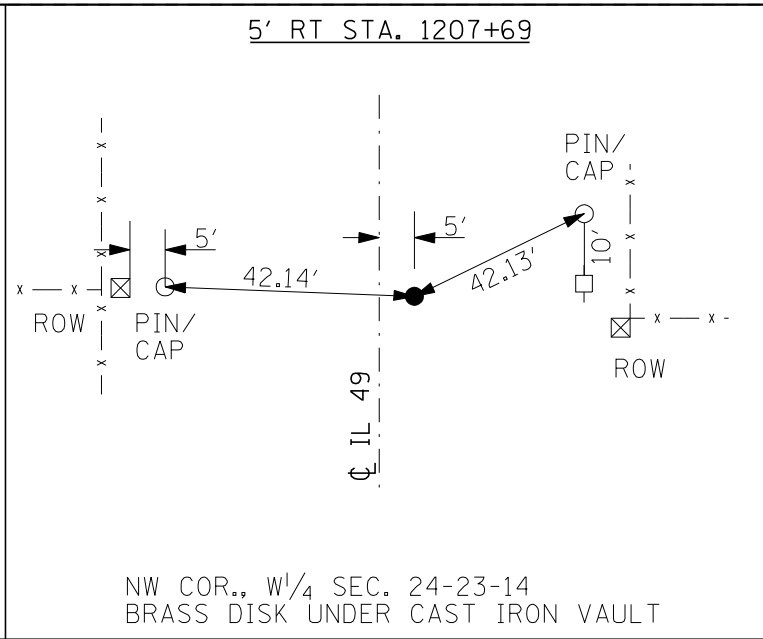
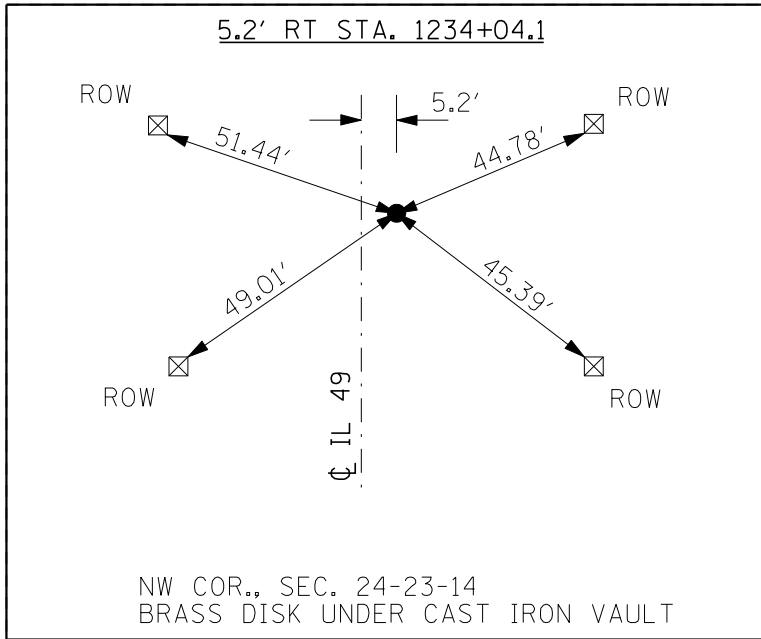


F.A.P. RTE.	SECTION	COUNTY	TOTAL SHEETS	SHEET NO.
840	(121,122)RS-3	VERMILION	89	17
STA.		TO STA.		
FED. ROAD DIST. NO.	ILLINOIS	FED. AID PROJECT		



BENCHMARK:
CHISLED SQUARE ON TOP OF THE NORTHWEST WINGWALL OF BRIDGE
STA. 1281+22.81
ELEVATION = 716.459

PLOT DATE = 11/15/2007
FILE NAME = c:\projects\4595800 (v8)\rev.plmaha.dgn
PLOT SCALE = 42.3525' / IN.
USER NAME = collierb

REVISIONS	
NAME	DATE

ILLINOIS DEPARTMENT OF TRANSPORTATION

TIE POINTS / BENCHMARKS

SCALE: VERT. / HORIZ.
DATE

DRAWN BY
CHECKED BY