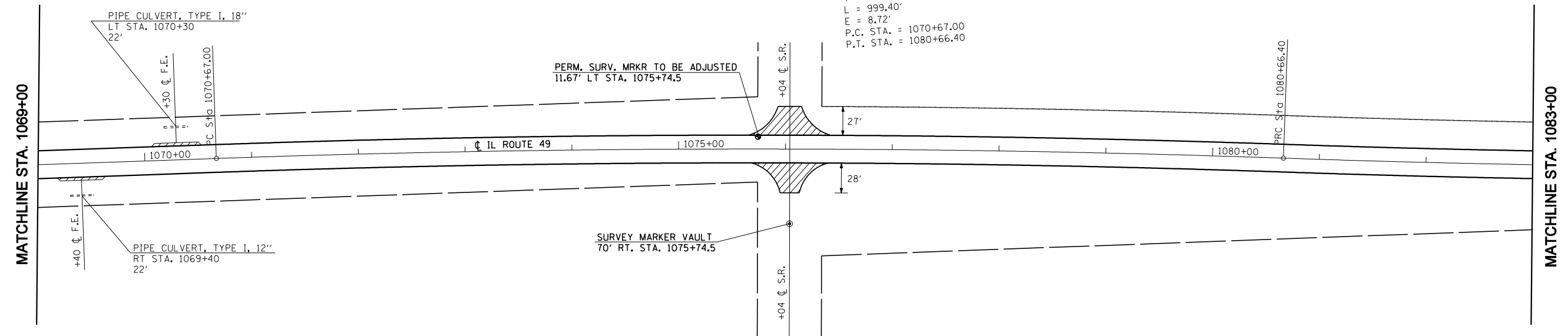


F.A.P. RTE.	SECTION	COUNTY	TOTAL SHEETS	SHEET NO.
840	(121,122)RS-3	VERMILION	89	30
STA. 1069+00		TO STA. 1097+00		
FED. ROAD DIST. NO.	ILLINOIS	FED. AID PROJECT		

SEC. 35, T 23 N, R 14 W

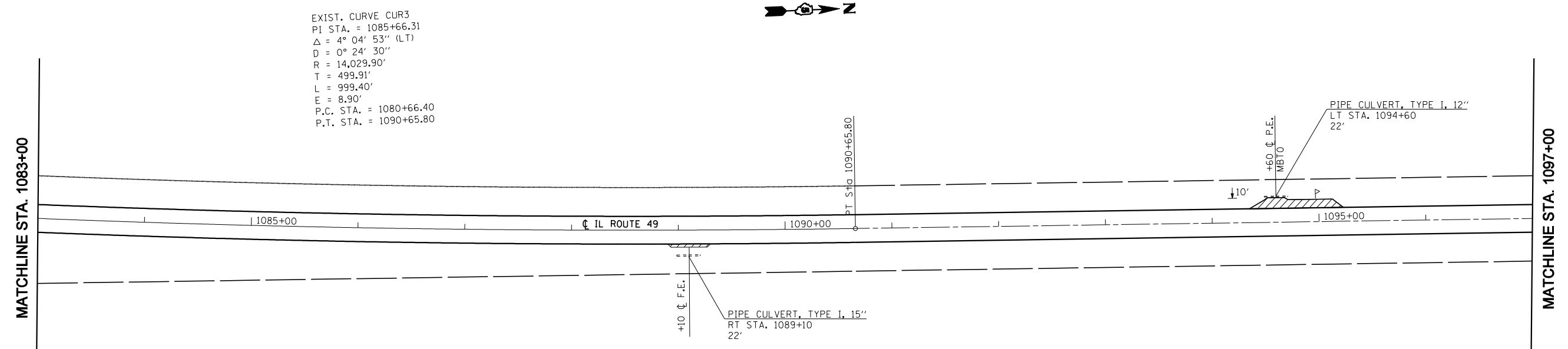


EXIST. CURVE CUR2
 PI STA. = 1075+66.90
 $\Delta = 3^\circ 59' 57''$ (RT)
 $D = 0^\circ 24' 01''$
 $R = 14,318.20'$
 $T = 499.90'$
 $L = 999.40'$
 $E = 8.72'$
 P.C. STA. = 1070+67.00
 P.T. STA. = 1080+66.40

INCIDENTAL HMA RESURFACING

SEC. 36, T 23 N, R 14 W

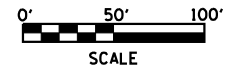
SEC. 35, T 23 N, R 14 W



EXIST. CURVE CUR3
 PI STA. = 1085+66.31
 $\Delta = 4^\circ 04' 53''$ (LT)
 $D = 0^\circ 24' 30''$
 $R = 14,029.90'$
 $T = 499.91'$
 $L = 999.40'$
 $E = 8.90'$
 P.C. STA. = 1080+66.40
 P.T. STA. = 1090+65.80

INCIDENTAL HMA RESURFACING

SEC. 36, T 23 N, R 14 W



REVISIONS	
NAME	DATE

ILLINOIS DEPARTMENT OF TRANSPORTATION
**EXISTING / PROPOSED
 PLAN SHEETS**
STA. 1069+00 - 1097+00
 SCALE: VERT. / HORIZ.
 DATE: DRAWN BY: CHECKED BY:

PLOT DATE = 11/15/2007
 FILE NAME = c:\projects\0595800 (v8)\rev.planshts.dgn
 PLOT SCALE = 1/8"=1'-0" / IN.
 USER NAME = collierb