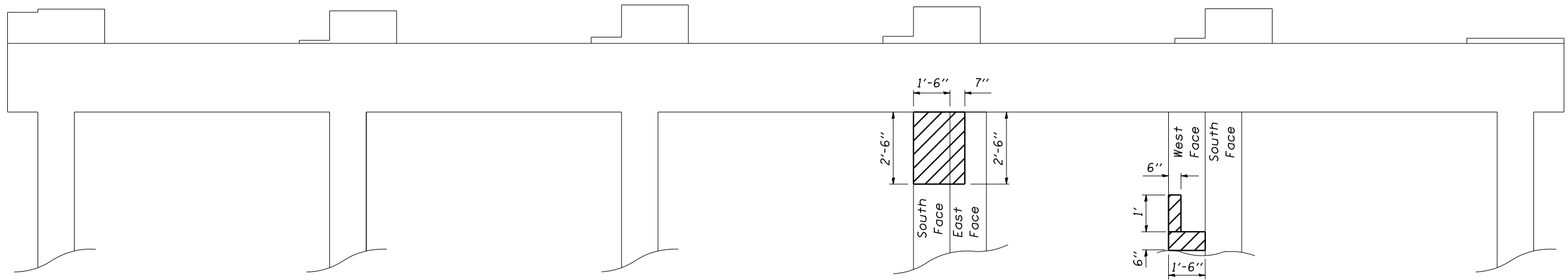


F.A.P. RTE.	SECTION	COUNTY	TOTAL SHEETS	SHEET NO.
840	(121,122)RS-3	VERMILION	89	44
STA.		TO STA.		
FED. ROAD DIST. NO.	ILLINOIS	FED. AID PROJECT		

# STRUCTURAL REPAIR OF CONCRETE SOUTH FACE OF BENT 5

## S.N. 092-0101

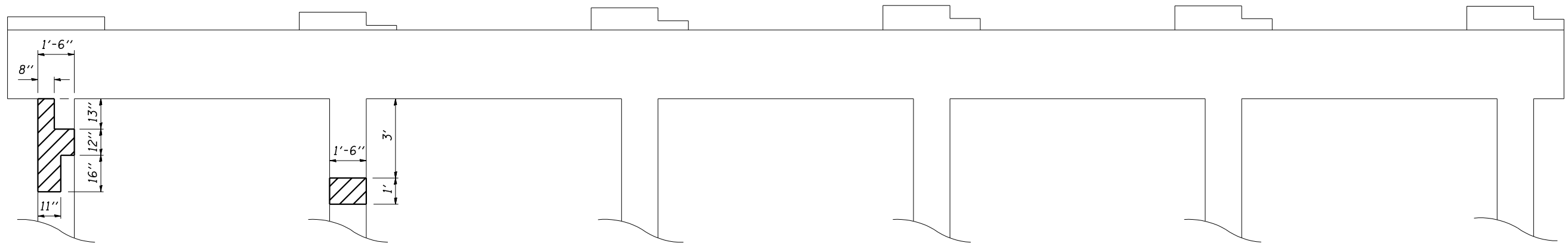
SHEET 7 OF 7



*Note:*  
See Special Provision for  
Structural Repair of Concrete.

# STRUCTURAL REPAIR OF CONCRETE NORTH FACE OF BENT 5

## S.N. 092-0101



*SN 092-0101*

ILLINOIS DEPARTMENT OF TRANSPORTATION  
**STRUCTURAL REPAIR OF CONCRETE**  
**BENT 5**

F.A.P. ROUTE 840  
SECTION (121,122)RS-3  
VERMILION COUNTY

SCALE: NA      DRAWN BY: JW/JRP  
DATE: 05-15-07      CHECKED BY:

PLOT DATE : 11/16/2007  
 FILE NAME : c:\projects\45955800 (v8)\70128b-1.dgn  
 PLOT SCALE : 4.23524 / IN.  
 USER NAME : collierb