

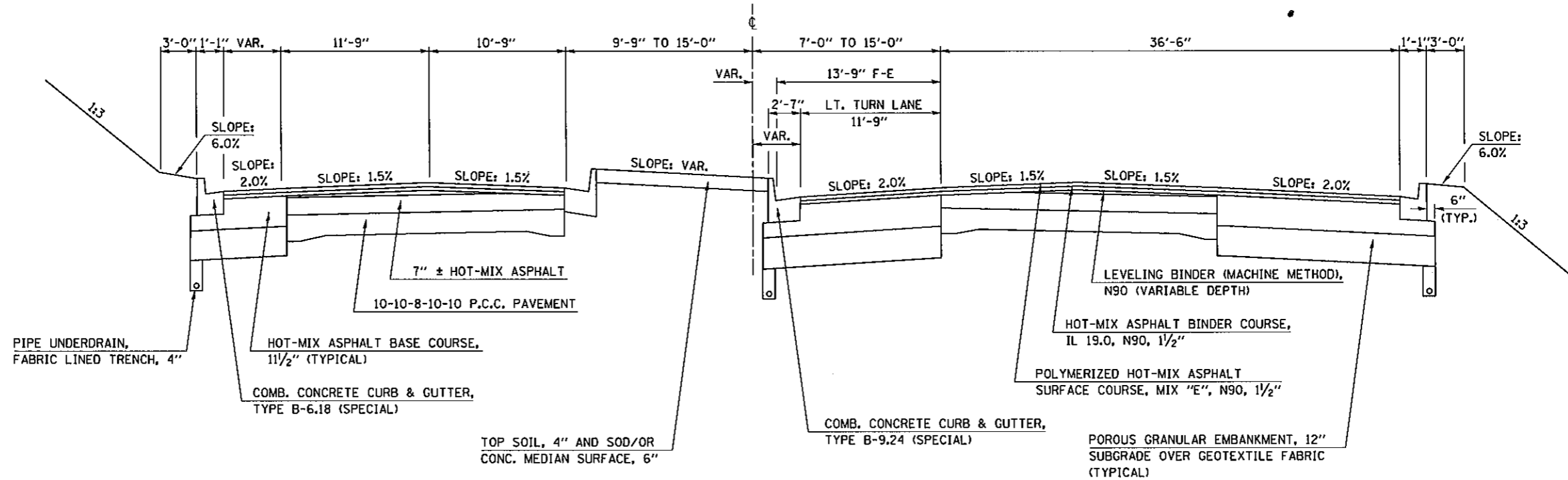
F.A. RTE.	SECTION	COUNTY	TOTAL SHEETS	SHEET NO.
VAR.	*	**	35	21

\* D5 CRACK & JOINT SEAL 2008-1  
\*\* DEWITT/PIATT/MCLEAN

LOCATION #3  
SHEET 3 OF 6

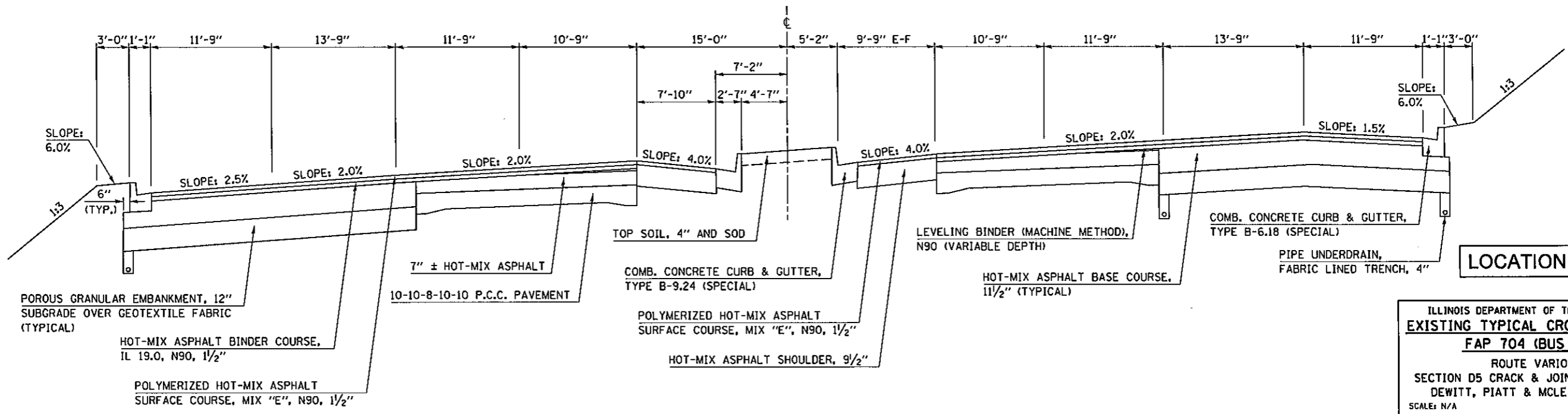
# EXISTING TYPICAL CROSS SECTION - FAP 704 (BUS I-55) 5

STATION 91+64.21 TO STATION 95+94.00



# EXISTING TYPICAL CROSS SECTION - FAP 704 (BUS I-55) 6

WITH RIGHT TURN LANES  
(SUPERELEVATED SECTION)



LOCATION #3

ILLINOIS DEPARTMENT OF TRANSPORTATION  
EXISTING TYPICAL CROSS SECTIONS  
FAP 704 (BUS I-55)  
ROUTE VARIOUS  
SECTION D5 CRACK & JOINT SEAL 2008-1  
DEWITT, PIATT & MCLEAN COUNTIES  
SCALE: N/A  
DATE: 08/23/07  
DRAWN BY: JRP  
CHECKED BY:

PLT DATE = 9/21/2007  
FILE NAME = c:\projects\70658\70658.dgn  
PLT SCALE = 43.1981 / 1  
USER NAME = collins-b