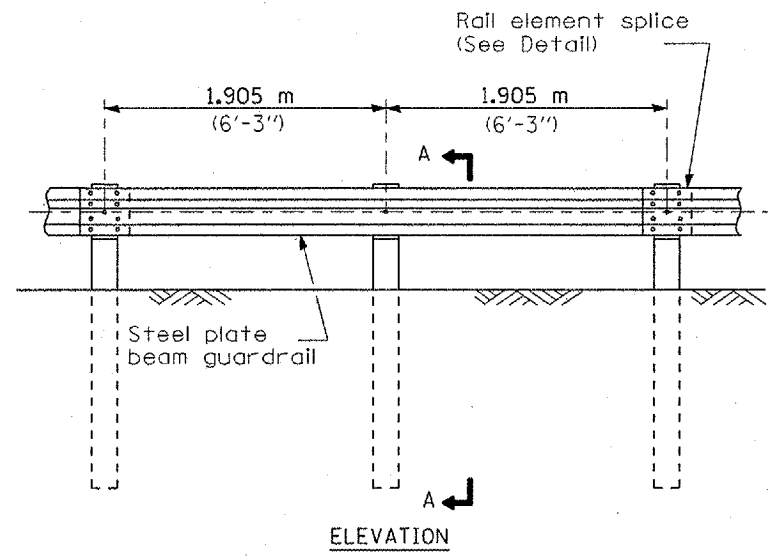
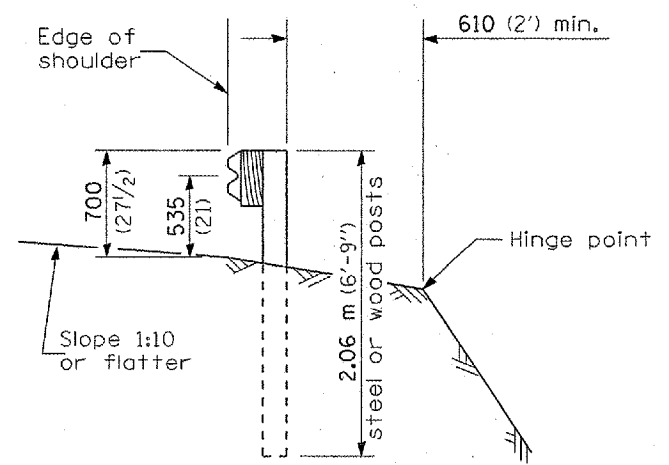


F.A. RTE.	SECTION	COUNTY	TOTAL SHEETS	SHEET NO.
*	**	SANGAMON	248	193A
STA.		TO STA.		
FED. ROAD DIST. NO.		ILLINOIS FED. AID PROJECT		
* FA155(I-55), FA172(I-72), FAP666(I-55 BUS)				
** D6 INTERSTATE RS,BR,M CAB 2008				

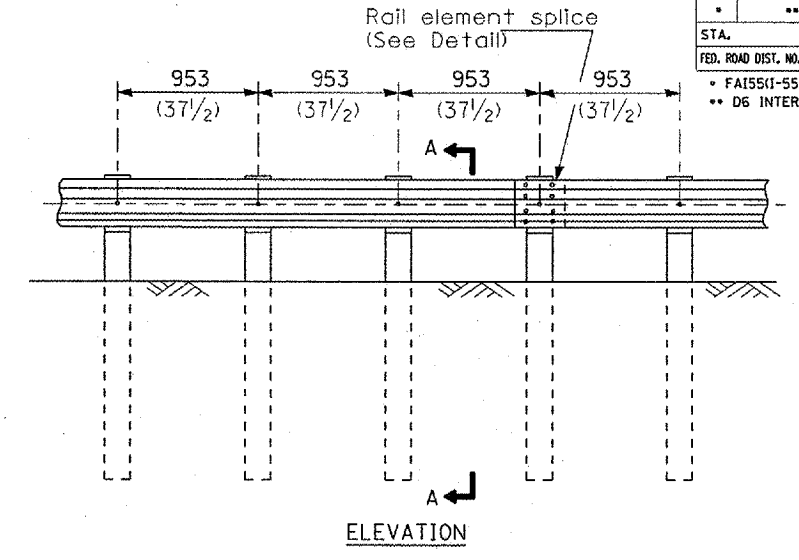


**TYPE A**

1.905 m (6'-3") Typical post spacing

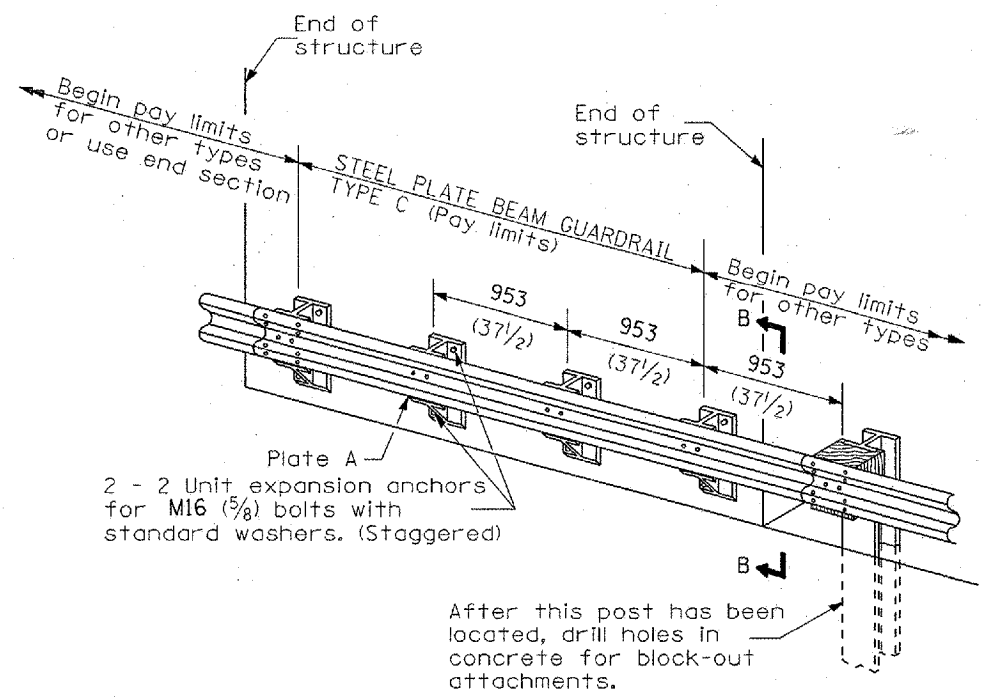


**SECTION A-A**



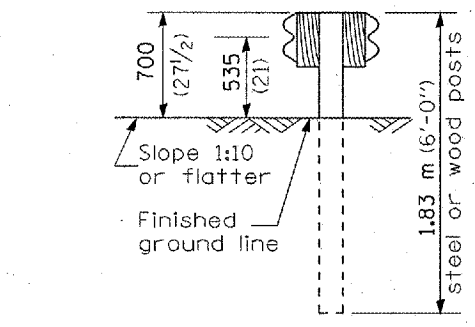
**TYPE B**

953 (37 1/2) Closed post spacing

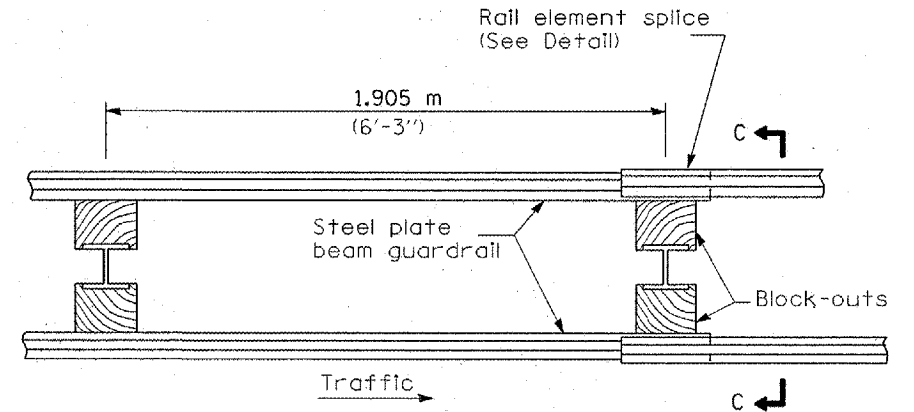


**TYPE C**

953 (37 1/2) Block-out spacing

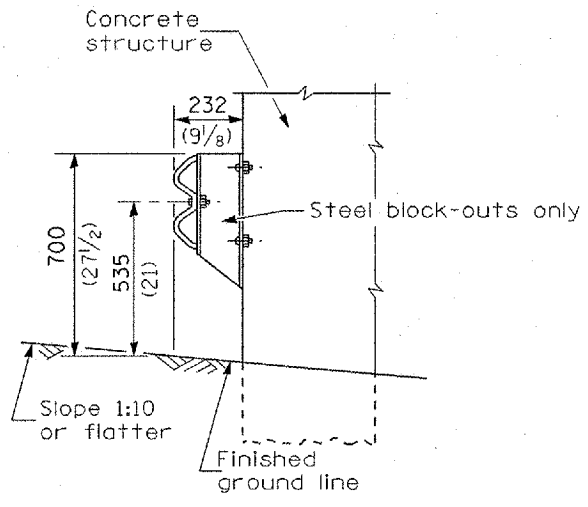


**SECTION C-C**



**TYPE D**

Double steel plate beam guardrail  
1.905 m (6'-3") typical post spacing



**SECTION B-B**

**GENERAL NOTES**

**NOTE:**  
THIS DETAIL SHALL BE USED FOR GUARDRAIL REPAIRS WHERE NEW STEEL PLATE BEAM GUARDRAIL WILL BE TIED INTO EXISTING STEEL PLATE BEAM GUARDRAIL, AS WELL AS FOR REMOVING AND RE-ERECTING THE RAIL ELEMENT.

All slope ratios are expressed as units of vertical displacement to units of horizontal displacement (V:H).  
All dimensions are in millimeters (inches) unless otherwise shown.  
The existing steel posts may be drilled to match the bolt pattern shown herein for the wood block-out, or a new steel post shall be provided.  
This detail is applicable to the guardrail system used prior to January 1, 2007. For details on the Midwest Guardrail System, see Standard 630001.

REVISIONS	
NAME	DATE

ILLINOIS DEPARTMENT OF TRANSPORTATION

**STEEL PLATE BEAM GUARDRAIL DETAILS**  
(Sheet 1 of 4)

SCALE: VERT. DATE: HORIZ. DRAWN BY: CHECKED BY:

Added Sheet 1-B-08

PLOT DATE = 10-08-2008 07:06:55AM  
 FILE NAME = C:\p0202\text\renew\renew\_guardrail.dgn  
 PLOT SCALE = 0.8534 / IN.  
 USER NAME = laughtin1