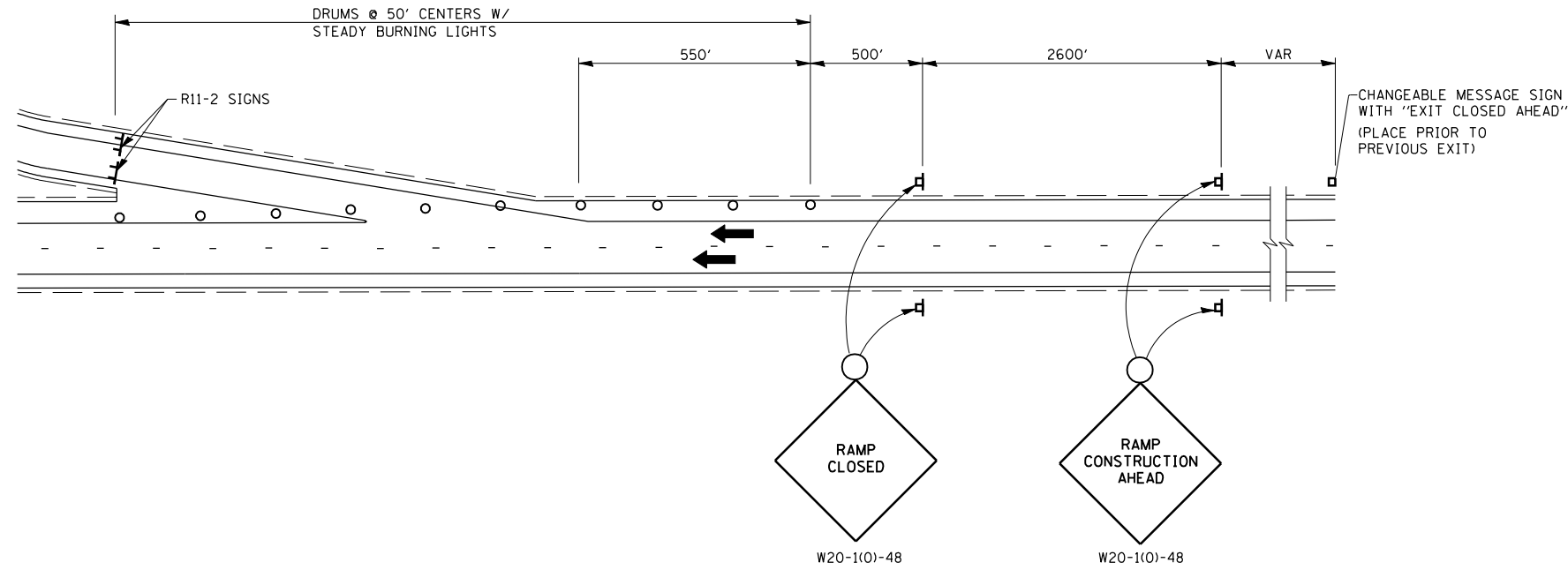
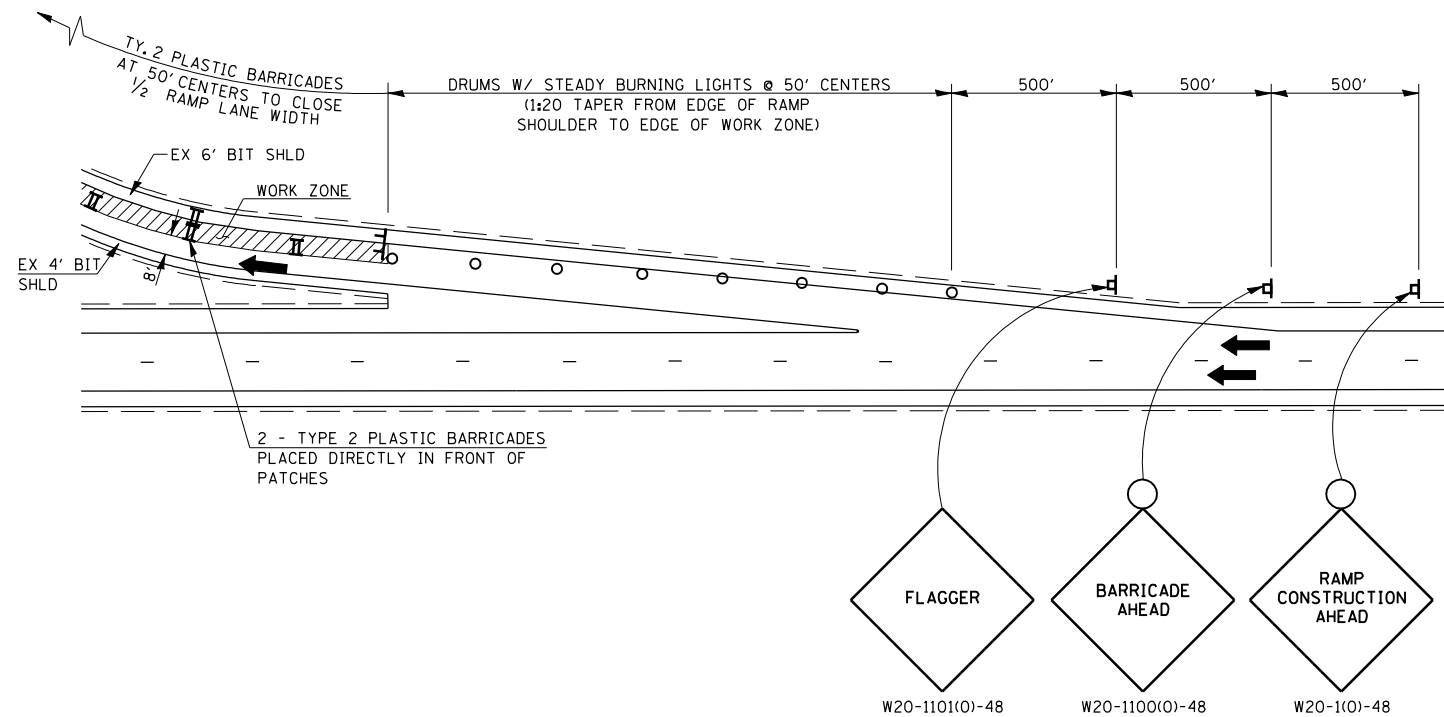


F.A.I. RTE.	SECTION	COUNTY	TOTAL SHEETS	SHEET NO.
*	**	SANGAMON	248	189
STA.		TO STA.		
FED. ROAD DIST. NO.	ILLINOIS	FED. AID PROJECT		
* FA155(I-55), FA172(I-72), FAP666(I-55 BUS) ** D6 INTERSTATE RS,BR,M, CAB 2008				



**EXIT RAMP CLOSURE DETAIL**  
FOR PAVEMENT MILLING, HMA RESURFACING,  
AND AGGREGATE SHOULDERS



**TRAFFIC CONTROL PLAN**  
FOR PATCHING ON EXIT RAMP

- SYMBOLS**
- ▣ SIGN ON PORTABLE OR PERMANENT SUPPORT
  - ⚡ TYPE 3 BARRICADE WITH TWO FLASHING AMBER LIGHTS AND ROAD CLOSURE SIGN
  - DRUM WITH STEADY BURNING LIGHT
  - FLAGGER WITH TRAFFIC CONTROL SIGN
  - ➔ TRAFFIC FLOW
  - ▬ TYPE 2 PLASTIC BARRICADE

REVISIONS	
NAME	DATE

ILLINOIS DEPARTMENT OF TRANSPORTATION  
**TRAFFIC CONTROL & PROTECTION FOR RAMP**  
 FA155(I-55), FA172(I-72), FAP666(I-55 BUS)  
 SECTION D6 INTERSTATE RS,BR,M, CAB 2008  
 SANGAMON COUNTY

SCALE: \_\_\_\_\_ DRAWN BY \_\_\_\_\_  
 DATE: \_\_\_\_\_ CHECKED BY \_\_\_\_\_