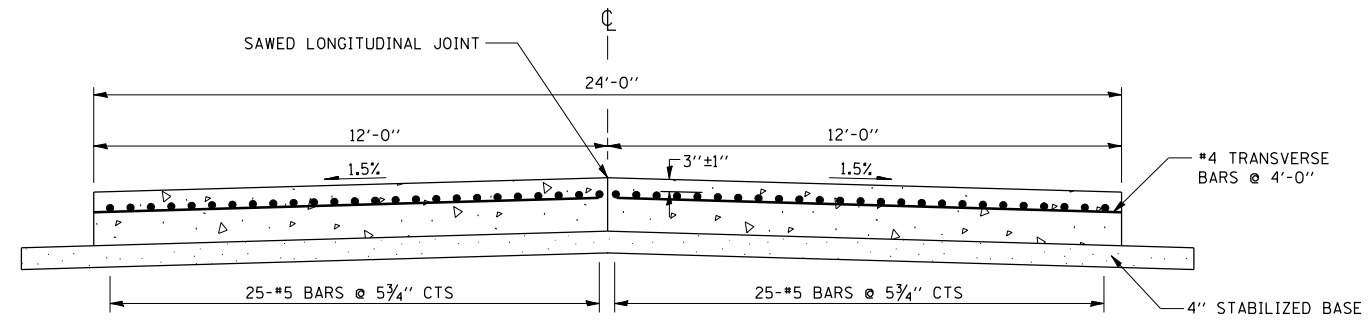
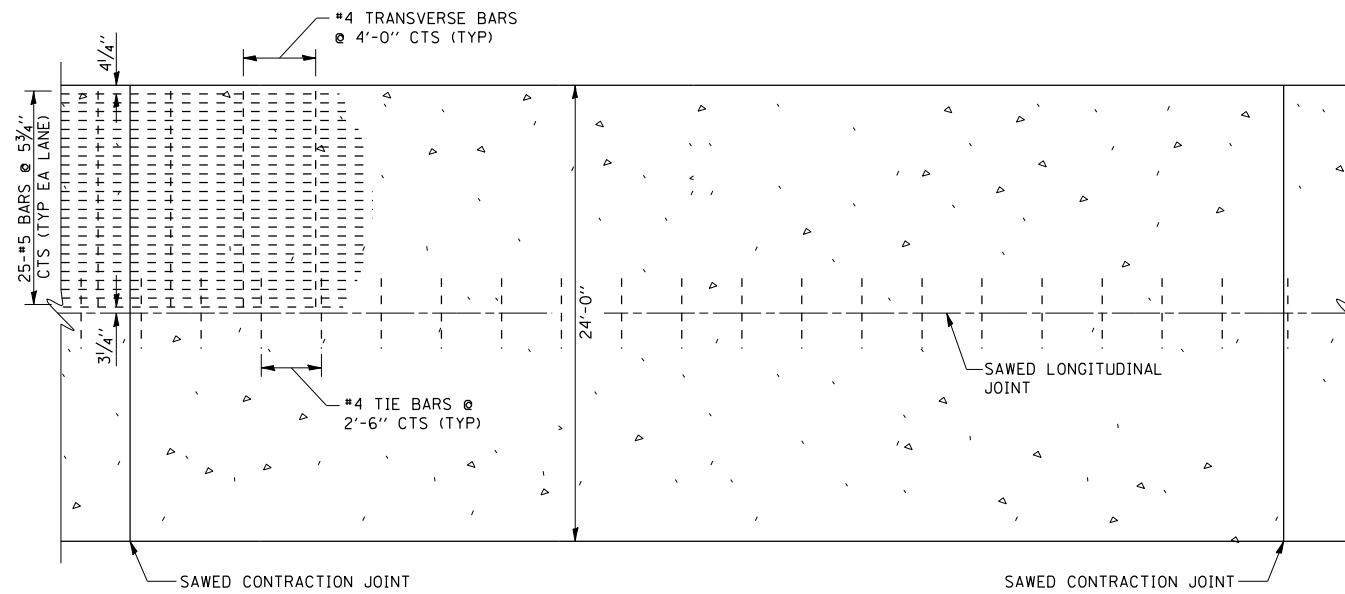


F.A.I. RTE.	SECTION	COUNTY	TOTAL SHEETS	SHEET NO.
*	**	SANGAMON	248	197

STA. TO STA.
 FED. ROAD DIST. NO. ILLINOIS FED. AID PROJECT
 * FA155(I-55), FA172(I-72), FAP666(I-55 BUS)
 ** D6 INTERSTATE RS,BR,M CAB 2008



CROSS-SECTION OF EXISTING CRC PAVEMENT ON I-72



PLAN OF EXISTING CRC PAVEMENT ON I-72

REVISIONS	
NAME	DATE

ILLINOIS DEPARTMENT OF TRANSPORTATION
 EXISTING PAVEMENT REINFORCEMENT
 FA155(I-55), FA172(I-72), FAP666(I-55 BUS)
 SECTION D6 INTERSTATE RS,BR,M CAB 2008
 SANGAMON COUNTY
 SCALE: DRAWN BY
 DATE CHECKED BY