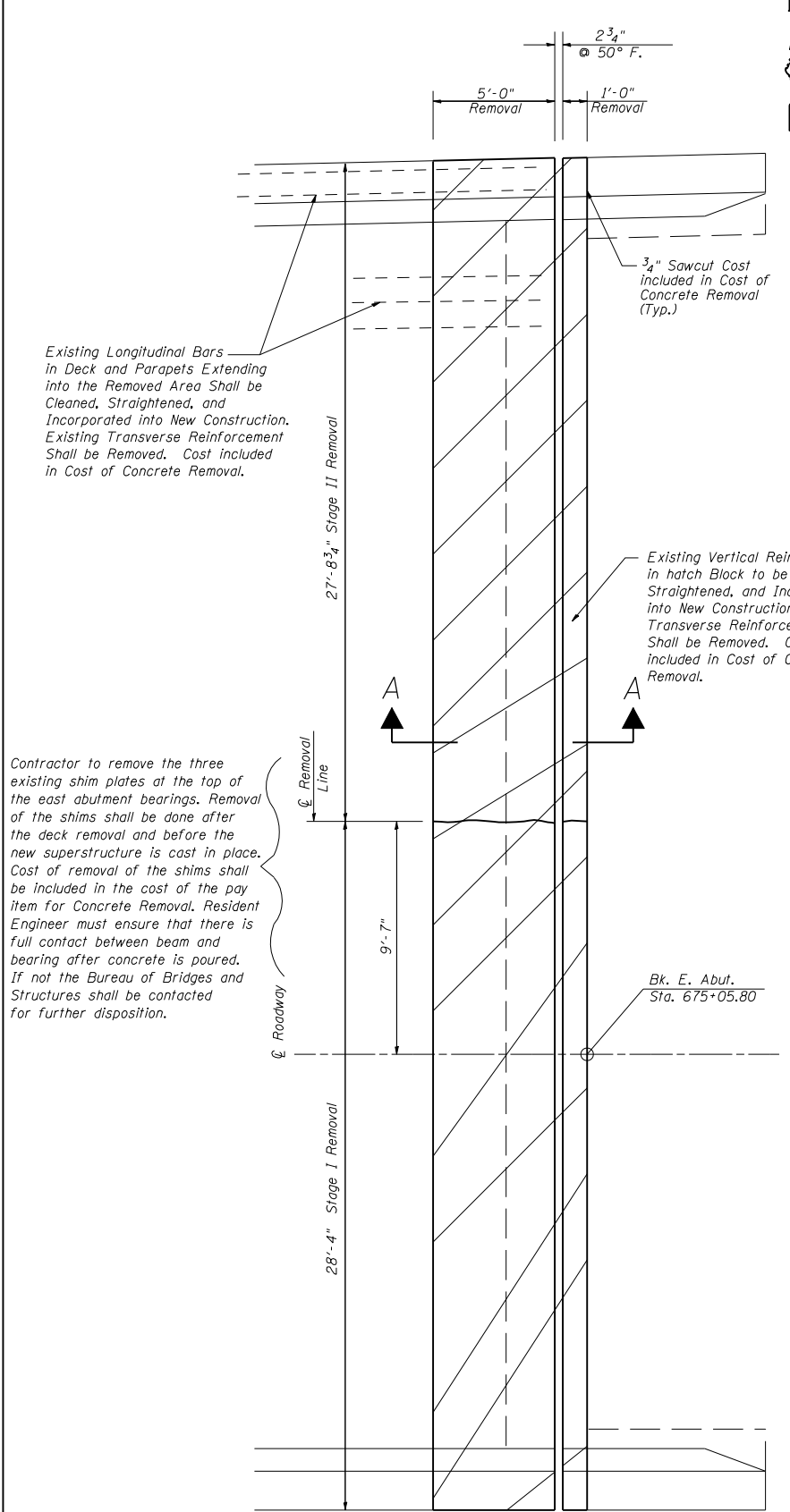


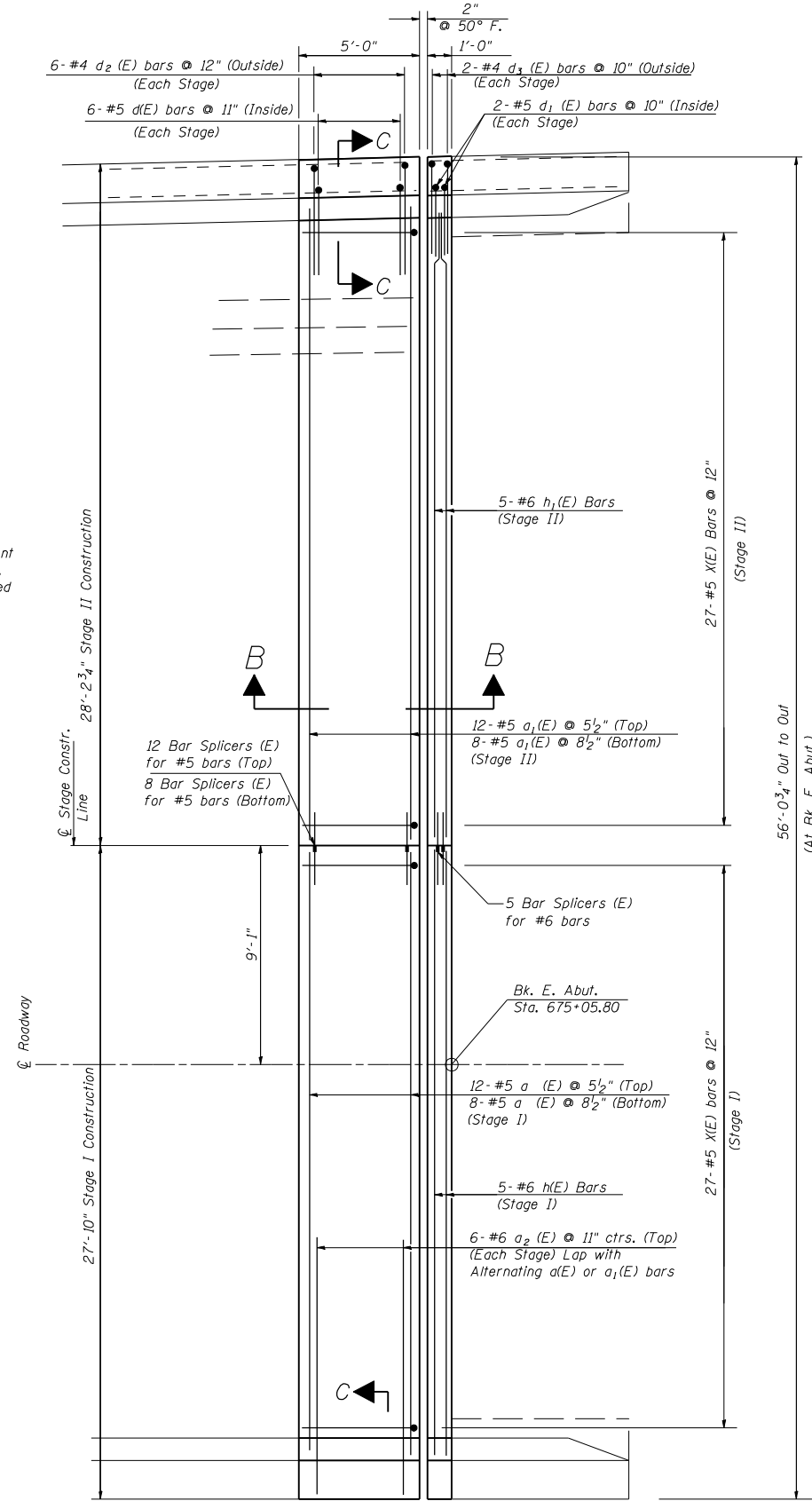
STATE OF ILLINOIS
DEPARTMENT OF TRANSPORTATION

CONTRACT NO. T2659				
F.A.I. RTE.	SECTION	COUNTY	TOTAL SHEETS	SHEET NO.
*	**	SANGAMON	248	216
FED. ROAD DIST. NO. ILLINOIS FED. AID PROJECT				
* F.A.I. 55, F.A.I. 72, F.A.P. 666				
** D6 Interstate R5, BR, M CAB 2008				

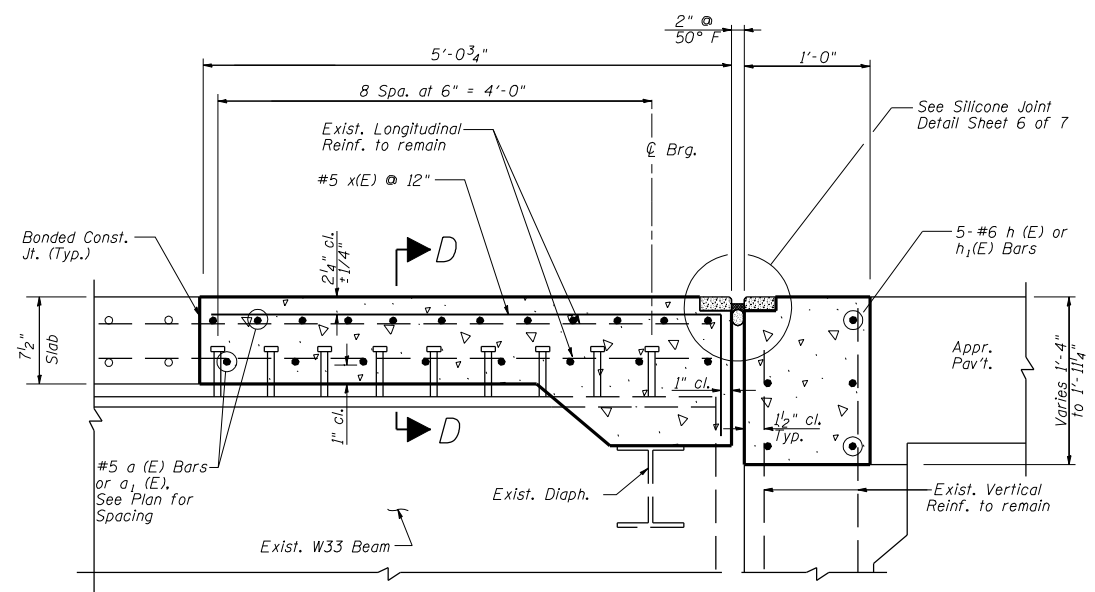
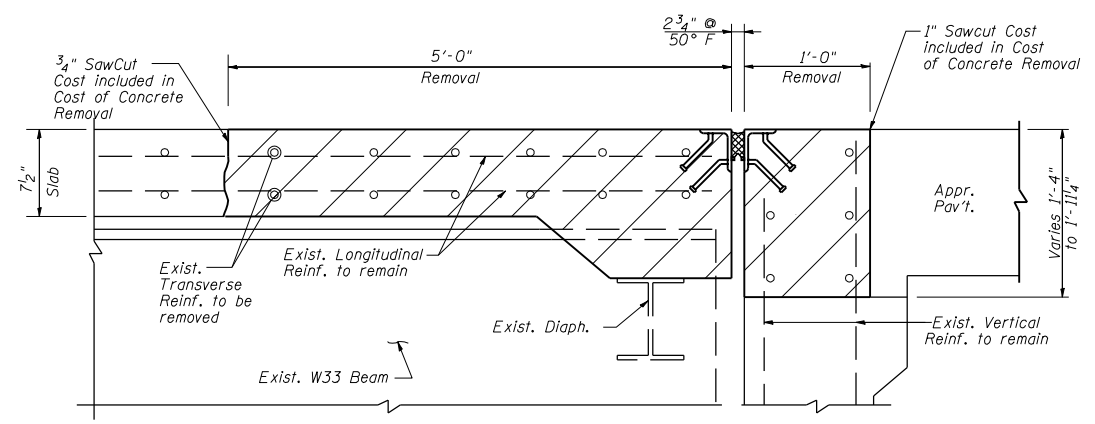
Sheet No. 4
of 7 Sheets



CONCRETE REMOVAL PLAN
(E. Abutment)



CONCRETE REPLACEMENT PLAN
(E. Abutment)



- NOTES:**
1. Work this Sheet with Sheet 6 of 7.
 2. Hatched areas indicate location of Concrete Removal.
 3. For Section C-C and D-D. See sheet 6 of 7.

EAST ABUTMENT DECK REPAIRS
F.A.I. 55, F.A.I. 72, F.A.P. 666
Section D6 Interstate, R5, BR, M CAB 2008
Sangamon County
WB 1-72 Over BU-55
S.N. 084-0076