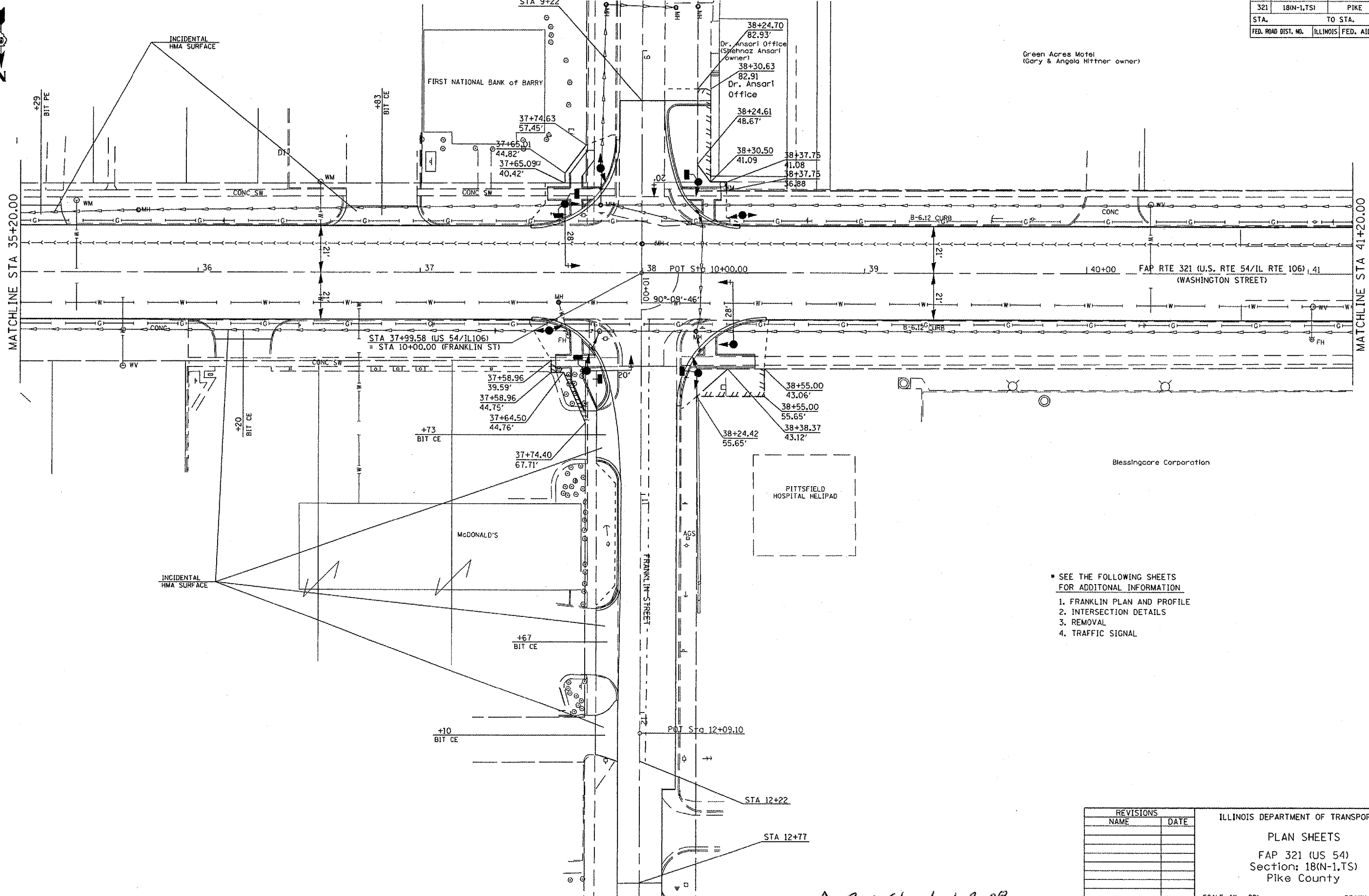


F.A.P. RTE.	SECTION	COUNTY	TOTAL SHEETS	SHEET NO.
321	18(N-1,TS)	PIKE	55	15
STA.		TO STA.		
FED. ROAD DIST. NO.		ILLINOIS FED. AID PROJECT		



- SEE THE FOLLOWING SHEETS FOR ADDITIONAL INFORMATION
- 1. FRANKLIN PLAN AND PROFILE
- 2. INTERSECTION DETAILS
- 3. REMOVAL
- 4. TRAFFIC SIGNAL

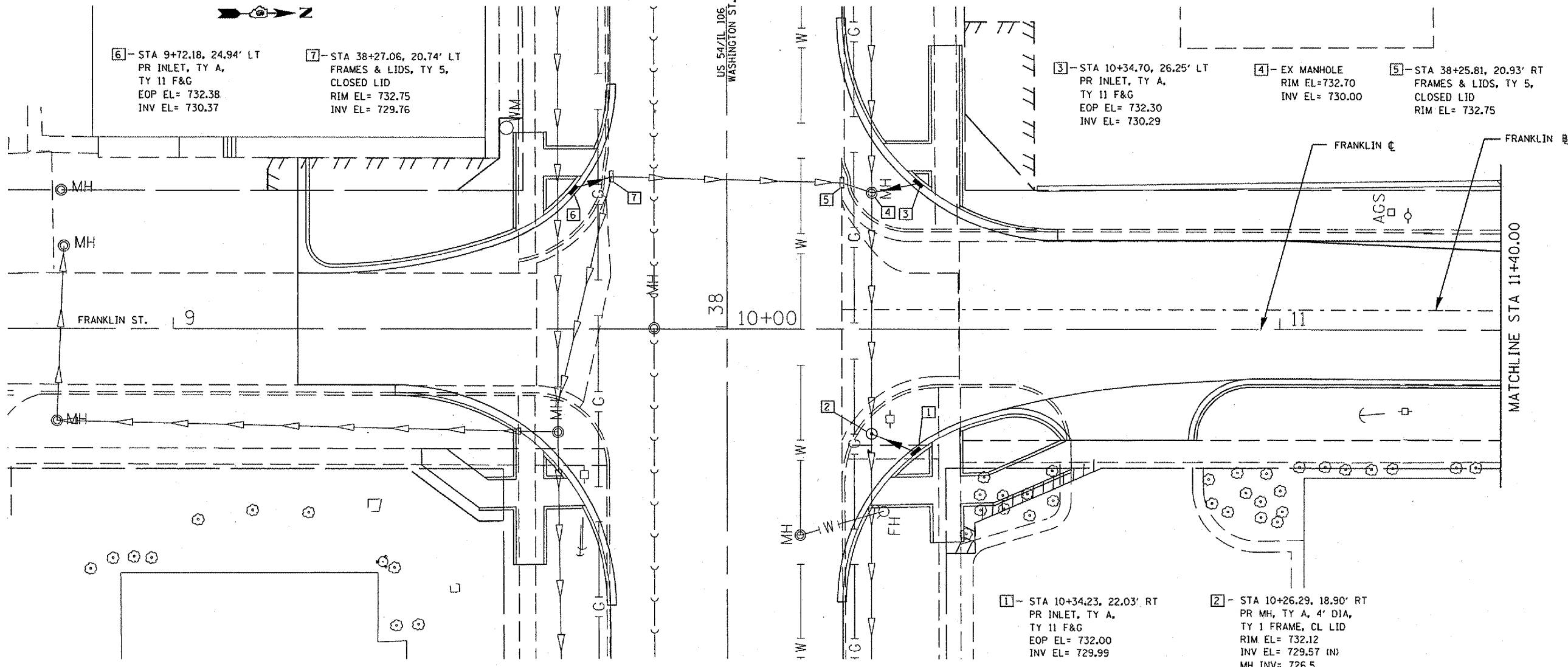
REVISIONS	
NAME	DATE

ILLINOIS DEPARTMENT OF TRANSPORTATION  
 PLAN SHEETS  
 FAP 321 (US 54)  
 Section: 18(N-1,TS)  
 Pike County  
 SCALE: 1" = 20'  
 DATE \_\_\_\_\_ DRAWN BY \_\_\_\_\_  
 CHECKED BY \_\_\_\_\_

Rev. Sheet 1-2-08

Plot Date: Dec-11-2007 07:43:55AM  
 File Name: c:\projects\72933\18n1\plan15.dgn  
 Plot Scale: 1/4" = 20'  
 User Name: baughman

F.A.P. RTE.	SECTION	COUNTY	TOTAL SHEETS	SHEET NO.
321	18(N-1,TS)	PIKE	55	18
STA.		TO STA.		
FED. ROAD DIST. NO.	ILLINOIS	FED. AID PROJECT		



6 - STA 9+72.18, 24.94' LT  
PR INLET, TY A,  
TY 11 F&G  
EOP EL= 732.38  
INV EL= 730.37

7 - STA 38+27.06, 20.74' LT  
FRAMES & LIDS, TY 5,  
CLOSED LID  
RIM EL= 732.75  
INV EL= 729.76

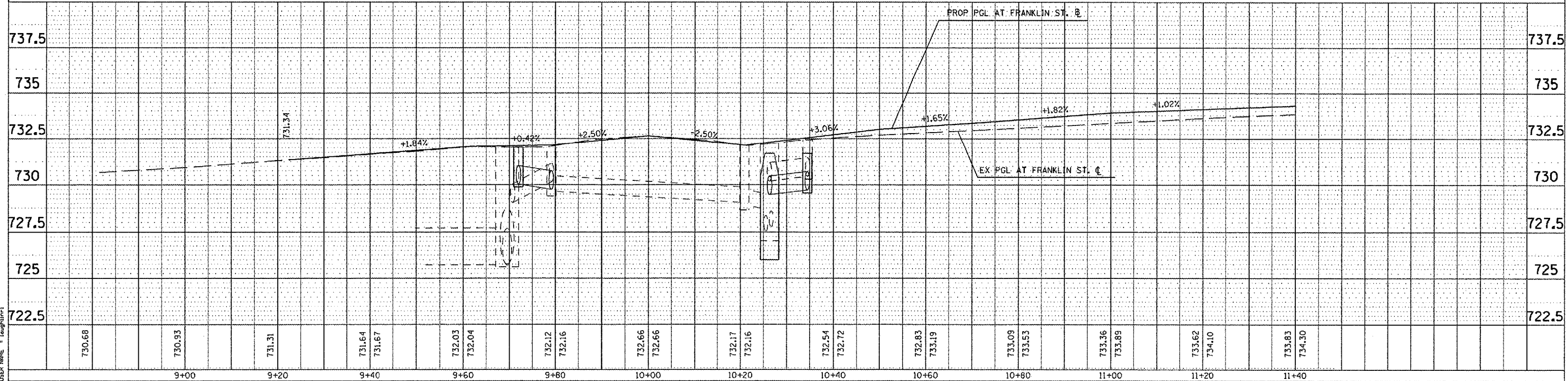
3 - STA 10+34.70, 26.25' LT  
PR INLET, TY A,  
TY 11 F&G  
EOP EL= 732.30  
INV EL= 730.29

4 - EX MANHOLE  
RIM EL=732.70  
INV EL= 730.00

5 - STA 38+25.81, 20.93' RT  
FRAMES & LIDS, TY 5,  
CLOSED LID  
RIM EL= 732.75

1 - STA 10+34.23, 22.03' RT  
PR INLET, TY A,  
TY 11 F&G  
EOP EL= 732.00  
INV EL= 729.99

2 - STA 10+26.29, 18.90' RT  
PR MH, TY A, 4' DIA,  
TY 1 FRAME, CL LID  
RIM EL= 732.12  
INV EL= 729.57 (N)  
MH INV= 726.5



Rev. Sheet 1-B-08

FRANKLIN ST

PLOTTED: [ ]  
 ALIGNED: [ ]  
 RT. OF WAY: [ ]  
 CHECKED: [ ]  
 DATE: [ ]  
 FILE NAME: [ ]  
 PLOT SCALE: 1/8" = 1'-0"  
 USER NAME: [ ]

PLOTTED: [ ]  
 GRADES: [ ]  
 S.M.: [ ]  
 STRUCTURE: [ ]  
 STATUS: [ ]  
 CHECKED: [ ]  
 DATE: [ ]  
 FILE NAME: [ ]  
 PLOT SCALE: 1/8" = 1'-0"  
 USER NAME: [ ]

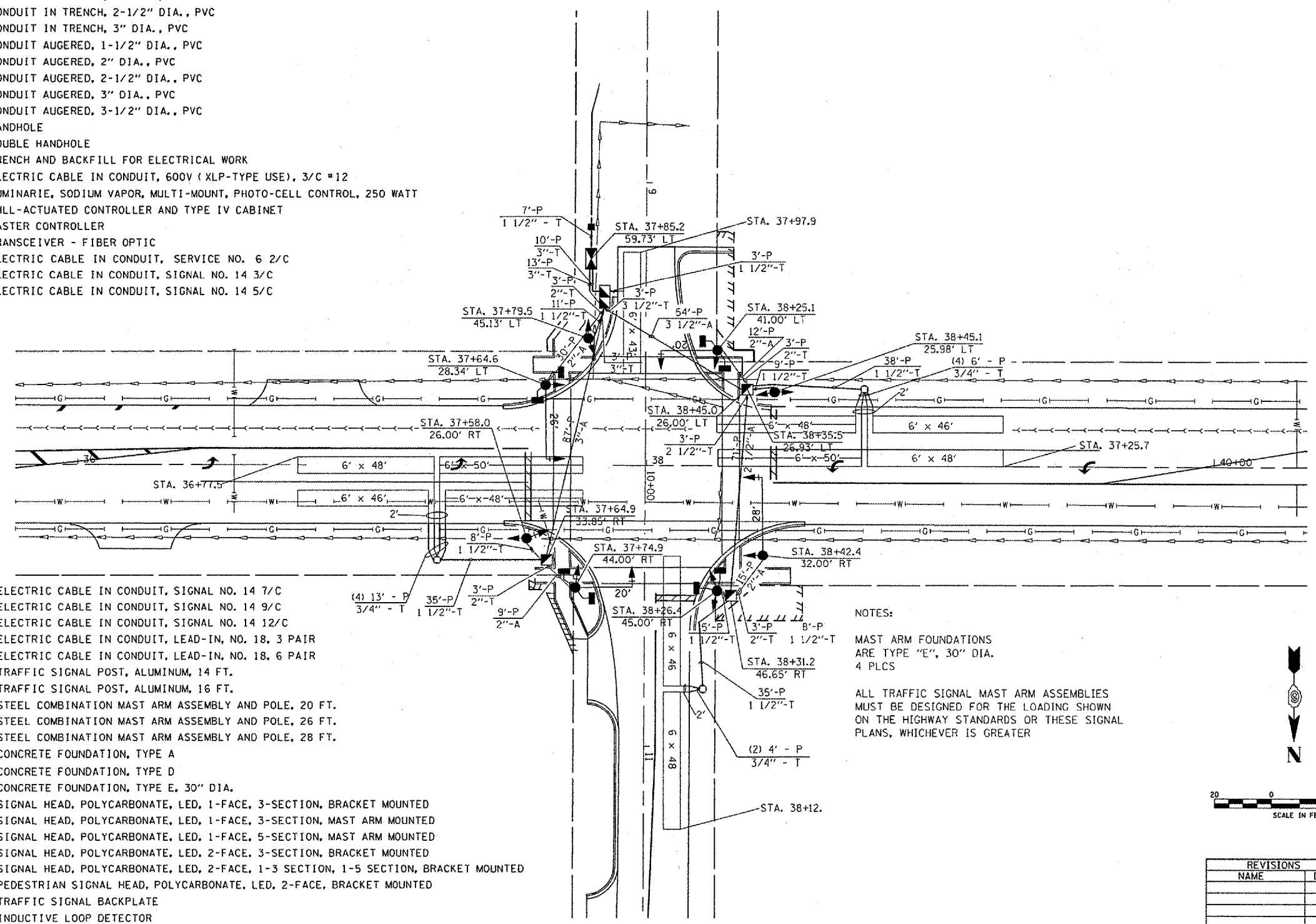
PLOT DATE: 11-28-87 07:46:31 AM  
 FILE NAME: c:\p2\projects\72933\11a\11a.p2.dgn  
 PLOT SCALE: 1/8" = 1'-0"  
 USER NAME: [ ]

TRAFFIC SIGNAL QUANTITIES

LOCATION: FRANKLIN AND WASHINGTON

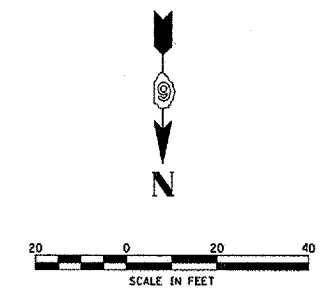
QUANTITY	UNIT	ITEM
58.0	50 FT	SIGN PANEL - TYPE 2
1	EACH	SERVICE INSTALLATION, TYPE A
1	EACH	WOOD POLE, 25 FT., CLASS 4
84	FOOT	CONDUIT IN TRENCH, 3/4" DIA., PVC
132	FOOT	CONDUIT IN TRENCH, 1-1/2" DIA., PVC
12.0	FOOT	CONDUIT IN TRENCH, 2" DIA., PVC
3.0	FOOT	CONDUIT IN TRENCH, 2-1/2" DIA., PVC
26.0	FOOT	CONDUIT IN TRENCH, 3" DIA., PVC
3.0	FOOT	CONDUIT AUGERED, 1-1/2" DIA., PVC
66.0	FOOT	CONDUIT AUGERED, 2" DIA., PVC
71.0	FOOT	CONDUIT AUGERED, 2-1/2" DIA., PVC
110.0	FOOT	CONDUIT AUGERED, 3" DIA., PVC
54.0	FOOT	CONDUIT AUGERED, 3-1/2" DIA., PVC
3	EACH	HANDHOLE
1	EACH	DOUBLE HANDHOLE
257.0	FOOT	TRENCH AND BACKFILL FOR ELECTRICAL WORK
696.0	FOOT	ELECTRIC CABLE IN CONDUIT, 600V (XLP-TYPE USE), 3/C #12
4	EACH	LUMINARIE, SODIUM VAPOR, MULTI-MOUNT, PHOTO-CELL CONTROL, 250 WATT
1	EACH	FULL-ACTUATED CONTROLLER AND TYPE IV CABINET
1	EACH	MASTER CONTROLLER
1	EACH	TRANSCEIVER - FIBER OPTIC
16.0	FOOT	ELECTRIC CABLE IN CONDUIT, SERVICE NO. 6 2/C
515	FOOT	ELECTRIC CABLE IN CONDUIT, SIGNAL NO. 14 3/C
534	FOOT	ELECTRIC CABLE IN CONDUIT, SIGNAL NO. 14 5/C

CONTRACT NO. 72933				
F.A.P. RTE.	SECTION	COUNTY	TOTAL SHEETS	SHEET NO.
321	18(N-1,TS)	PIKE	54	31
STA.		TO STA.		
FED. ROAD DIST. NO.		ILLINOIS FED. AID PROJECT		



389.5	FOOT	ELECTRIC CABLE IN CONDUIT, SIGNAL NO. 14 7/C
614.5	FOOT	ELECTRIC CABLE IN CONDUIT, SIGNAL NO. 14 9/C
193	FOOT	ELECTRIC CABLE IN CONDUIT, SIGNAL NO. 14 12/C
165.0	FOOT	ELECTRIC CABLE IN CONDUIT, LEAD-IN, NO. 18, 3 PAIR
202.0	FOOT	ELECTRIC CABLE IN CONDUIT, LEAD-IN, NO. 18, 6 PAIR
2	EACH	TRAFFIC SIGNAL POST, ALUMINUM, 14 FT.
2	EACH	TRAFFIC SIGNAL POST, ALUMINUM, 16 FT.
2	EACH	STEEL COMBINATION MAST ARM ASSEMBLY AND POLE, 20 FT.
1	EACH	STEEL COMBINATION MAST ARM ASSEMBLY AND POLE, 26 FT.
1	EACH	STEEL COMBINATION MAST ARM ASSEMBLY AND POLE, 28 FT.
12.0	FOOT	CONCRETE FOUNDATION, TYPE A
3.0	FOOT	CONCRETE FOUNDATION, TYPE D
40.0	FOOT	CONCRETE FOUNDATION, TYPE E, 30" DIA.
4	EACH	SIGNAL HEAD, POLYCARBONATE, LED, 1-FACE, 3-SECTION, BRACKET MOUNTED
2	EACH	SIGNAL HEAD, POLYCARBONATE, LED, 1-FACE, 3-SECTION, MAST ARM MOUNTED
2	EACH	SIGNAL HEAD, POLYCARBONATE, LED, 1-FACE, 5-SECTION, MAST ARM MOUNTED
2	EACH	SIGNAL HEAD, POLYCARBONATE, LED, 2-FACE, 3-SECTION, BRACKET MOUNTED
2	EACH	SIGNAL HEAD, POLYCARBONATE, LED, 2-FACE, 1-3 SECTION, 1-5 SECTION, BRACKET MOUNTED
4	EACH	PEDESTRIAN SIGNAL HEAD, POLYCARBONATE, LED, 2-FACE, BRACKET MOUNTED
6	EACH	TRAFFIC SIGNAL BACKPLATE
12	EACH	INDUCTIVE LOOP DETECTOR
1469.0	EACH	DETECTOR LOOP, TYPE 1
8.0	EACH	PEDESTRIAN PUSHBUTTON
400.0	FOOT	ELECTRIC CABLE IN CONDUIT, GROUND, #6 1/C (GREEN)

NOTES:  
 MAST ARM FOUNDATIONS ARE TYPE "E", 30" DIA. 4 PLCS  
 ALL TRAFFIC SIGNAL MAST ARM ASSEMBLIES MUST BE DESIGNED FOR THE LOADING SHOWN ON THE HIGHWAY STANDARDS OR THESE SIGNAL PLANS, WHICHEVER IS GREATER



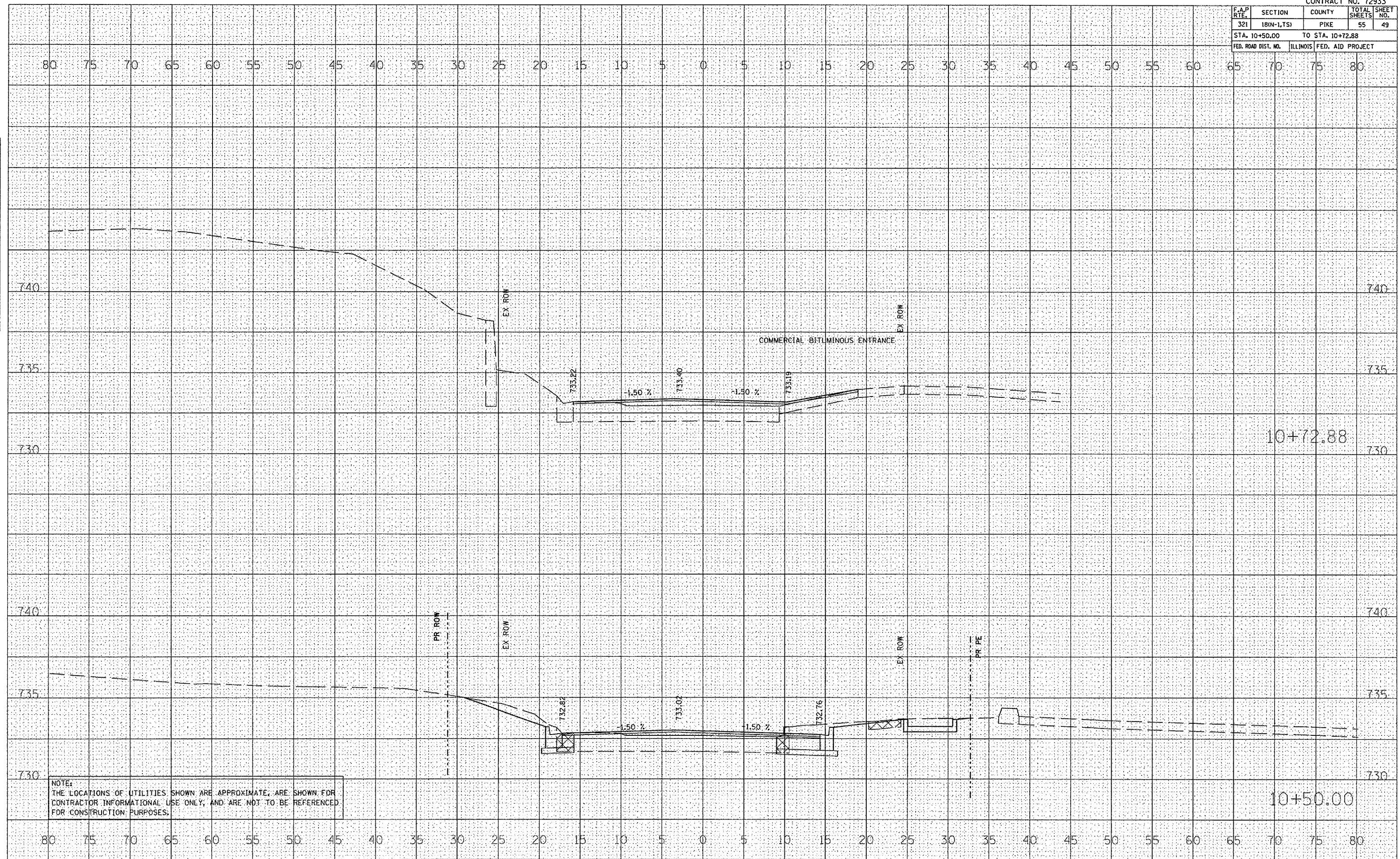
REVISIONS	
NAME	DATE

ILLINOIS DEPARTMENT OF TRANSPORTATION  
 PROPOSED TRAFFIC SIGNALS  
 FAP 321 (US 54)  
 SECTION 18(N-1,TS)  
 PIKE COUNTY  
 SCALE: VERT. \_\_\_\_\_  
 HORIZ. \_\_\_\_\_  
 DATE \_\_\_\_\_  
 DRAWN BY \_\_\_\_\_  
 CHECKED BY \_\_\_\_\_

Rev. Sheet 1-8-08

PLOT DATE : Dec-11-2007 07:45:19 AM  
 FILE NAME : c:\projects\655181\traffic\signal.dgn  
 PLOT SCALE : 42.3528 / IN  
 USER NAME : laughton1

CONTRACT NO. 72933				
F.A.P. RITE	SECTION	COUNTY	TOTAL SHEETS	SHEET NO.
321	18(N-1,TS)	PIKE	55	49
STA. 10+50.00		TO STA. 10+72.88		
FED. ROAD DIST. NO.		ILLINOIS FED. AID PROJECT		



NOTE:  
 THE LOCATIONS OF UTILITIES SHOWN ARE APPROXIMATE, ARE SHOWN FOR CONTRACTOR INFORMATIONAL USE ONLY, AND ARE NOT TO BE REFERENCED FOR CONSTRUCTION PURPOSES.

△ Rev. Sheet 1-8-08