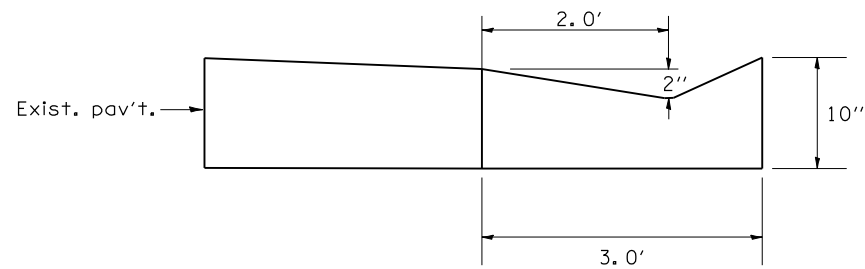
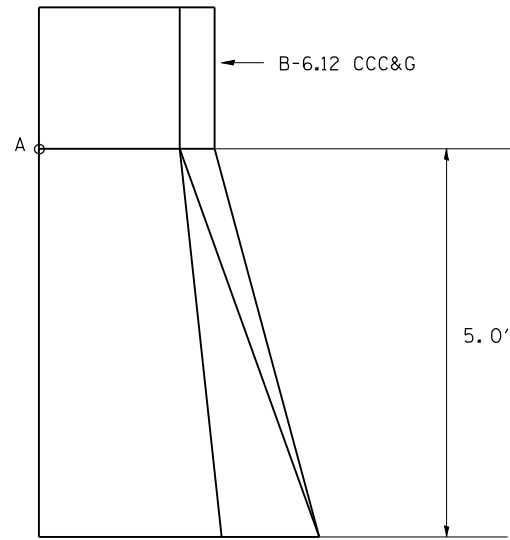
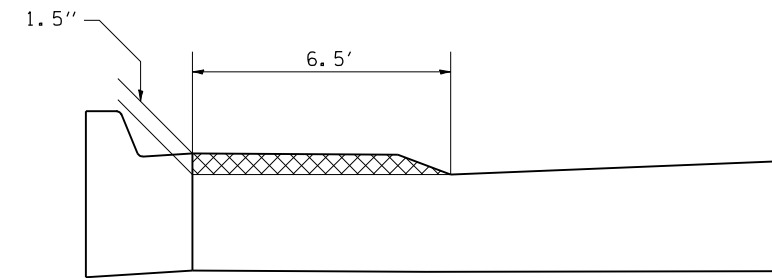


F.A.P. RTE.	SECTION	COUNTY	TOTAL SHEETS	SHEET NO.
321	18(N-1,TS)	PIKE	55	35
STA.		TO STA.		
FED. ROAD DIST. NO.	ILLINOIS	FED. AID PROJECT		



INLET/OUTLET DETAIL FOR COMB. CONC. CURB & GUTTER, CLINTON ST.

- PT. A —
- SE QUAD STA 9+27
 - SW QUAD STA 9+51
 - NE QUAD STA 10+49
 - NW QUAD STA 10+49



MILLING DETAIL
FRANKLIN ST. NW QUAD
STA 10+42 TO STA 12+34

DUE TO MONOLTHIC LIP AT EDGE OF PAVEMENT
MILL OUTSIDE 6.5' OF PAVEMENT ON THE NW QUAD
OF FRANKLIN 1.5" DEEP. MILLING PAID FOR AS HMA
SURFACE REMOVAL, VARIABLE DEPTH.

PLOT DATE : 04-24-2007 01:06:24PM
FILE NAME : c:\p\projects\655184\details.dgn
PLOT SCALE : 42,352% / IN.
USER NAME : laughlin-1

REVISIONS	
NAME	DATE

ILLINOIS DEPARTMENT OF TRANSPORTATION
DETAILS SHEET
FAP 321 (US 54)
SECTION 18(N-1,TS)
PIKE COUNTY

SCALE: VERT.
HORIZ.
DATE

DRAWN BY
CHECKED BY