

F.A.P. RTE.	SECTION	COUNTY	TOTAL SHEETS	SHEET NO.
304		PIKE	5	1
FED. ROAD DIST. NO.	ILLINOIS	CONTRACT NO. 72B31		
• D-6 GUARDRAIL TERM ENDS 2008				

STATE OF ILLINOIS
DEPARTMENT OF TRANSPORTATION
DIVISION OF HIGHWAYS

PROPOSED
HIGHWAY PLANS

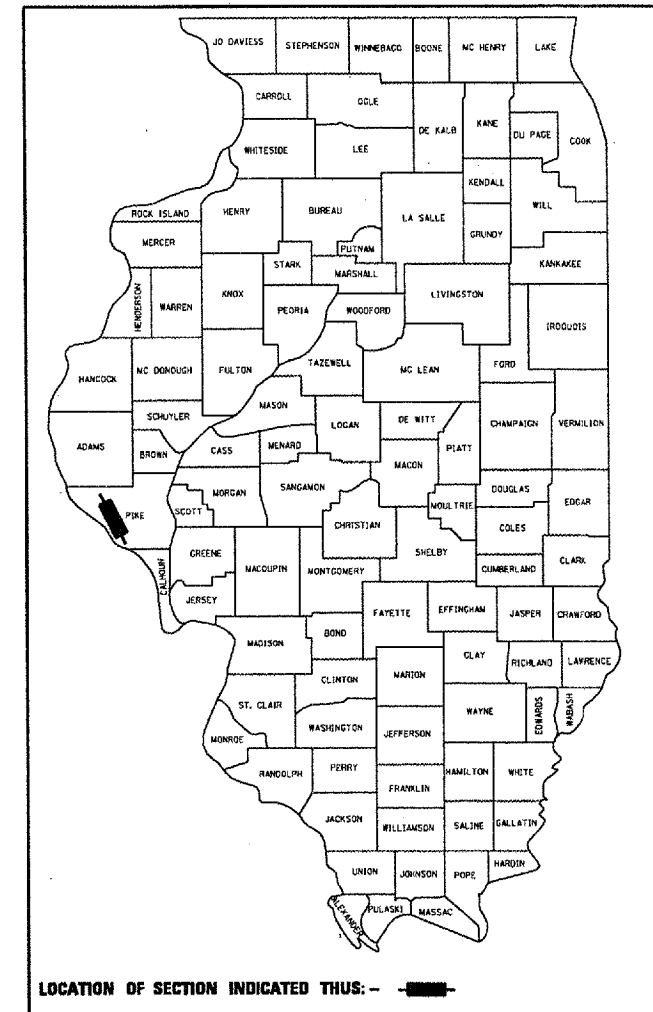
FAP ROUTE 304 (IL 96)
SECTION D-6 GUARDRAIL TERM ENDS 2008
PROJECT: ACHSIP-000S (551)

PIKE COUNTY
C-96-108-07

INDEX OF SHEETS

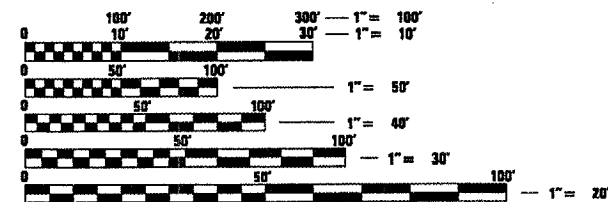
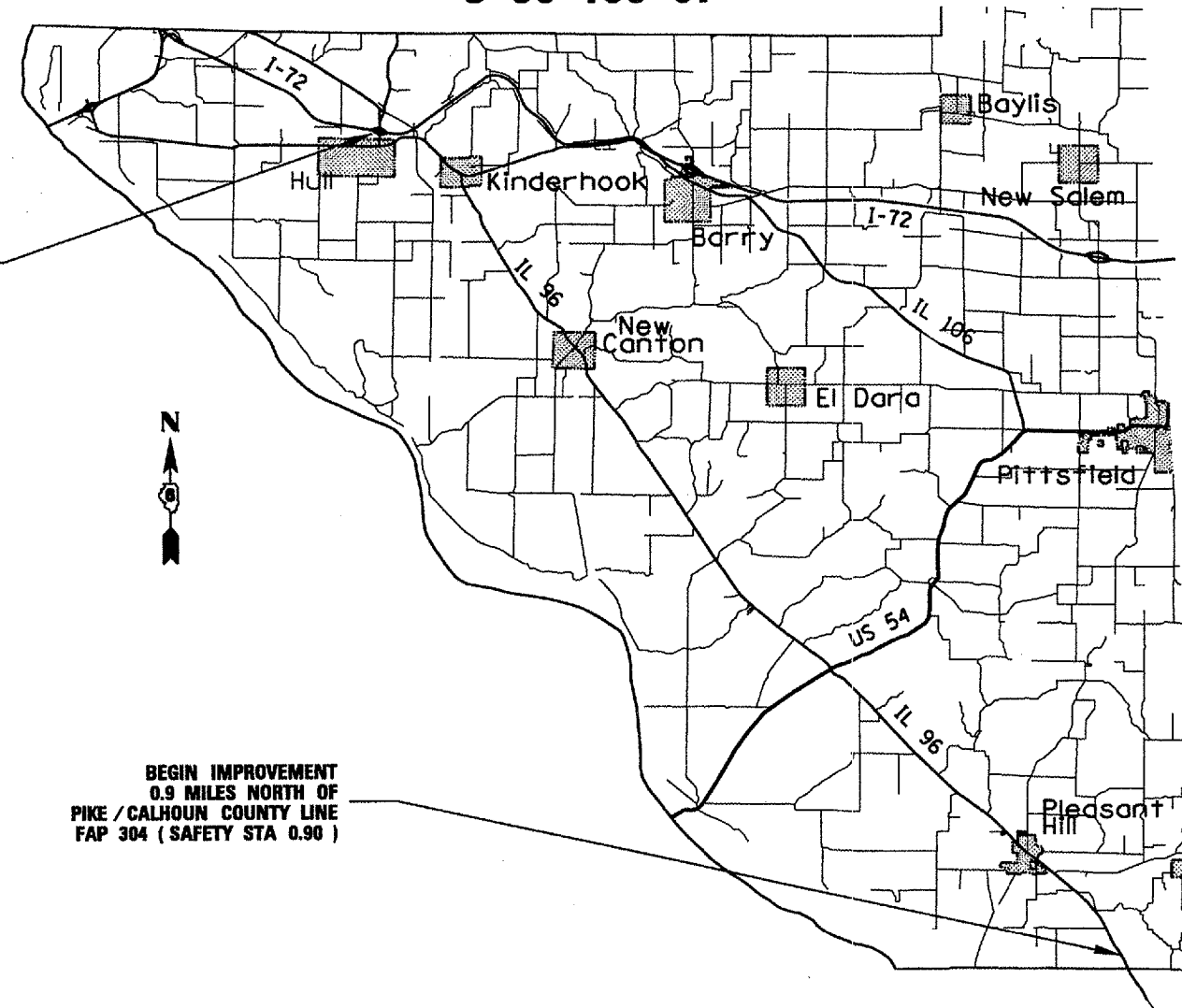
1. COVER SHEET
2. GENERAL NOTES
3. SUMMARY OF QUANTITIES
4. SCHEDULES
5. PLAN SHEET

FOR LIST OF STANDARDS, SEE SHEET NO. 2



END IMPROVEMENT
 IL 96 / I-72 INTERCHANGE
 FAP 304 (SAFETY STA 30.96)

BEGIN IMPROVEMENT
 0.9 MILES NORTH OF
 PIKE / CALHOUN COUNTY LINE
 FAP 304 (SAFETY STA 0.90)



FULL SIZE PLANS HAVE BEEN PREPARED USING STANDARD ENGINEERING SCALES. REDUCED SIZED PLANS WILL NOT CONFORM TO STANDARD SCALES. IN MAKING MEASUREMENTS ON REDUCED PLANS, THE ABOVE SCALES MAY BE USED.

J.U.L.I.E.
 JOINT UTILITY LOCATION INFORMATION FOR EXCAVATION
 1-800-892-0123
 OR 811

PROJECT ENGINEER: BRIAN GALLOWAY 217-557-7897
 PROJECT MANAGER: JOHN NEGANGARD 217-782-6990

CONTRACT NO. 72B31

STATE OF ILLINOIS
 DEPARTMENT OF TRANSPORTATION
 DIVISION OF HIGHWAYS

SUBMITTED Oct 11, 2007
[Signature]
 DEPUTY DIRECTOR OF HIGHWAYS, REGION ENGINEER

Dec 7, 2007
[Signature]
 ENGINEER OF DESIGN AND ENVIRONMENT

Dec 7, 2007
[Signature]
 DIRECTOR OF HIGHWAYS, CHIEF ENGINEER

PRINTED BY THE AUTHORITY
OF THE STATE OF ILLINOIS

INDEX OF SHEETS:

1. COVER SHEET
2. GENERAL NOTES
3. SUMMARY OF QUANTITIES
4. SCHEDULES
5. PLAN SHEET

LIST OF STANDARDS:

630001-07	635011-01
630101-07	701001-01
630301-04	701006-02
631031-06	701201-02
635006-02	701901

GENERAL NOTES:

1. ANY REFERENCE TO THE STANDARDS THROUGHOUT THE PLANS SHALL BE INTERPRETED TO BE THE LATEST STANDARDS OF THE DEPARTMENT AS INCLUDED IN THE PLANS.
2. NO EXCAVATION IS ANTICIPATED ON THIS PROJECT WHICH WOULD AFFECT UTILITIES. SHOULD NOTIFICATION BE NECESSARY, THE CONTRACTOR IS RESPONSIBLE FOR CONTACTING J.U.L.I.E. A MINIMUM OF 48 HOURS PRIOR TO COMMENCING WORK - (800) 892-0123.
3. THE CONTRACTOR WILL BE REQUIRED TO CONTACT THE OPERATIONS ENGINEER (217) 782-7314 AT LEAST 72 HOURS PRIOR TO DRIVING ANY POSTS. TO MAKE SURE STATE OWNED UTILITIES ARE NOT IN THE WAY.
4. THE CONTRACTOR WILL BE REQUIRED TO REPAIR ANY AREAS OF TURF THAT ARE DAMAGED DURING THE EXECUTION OF THIS CONTRACT. THIS WORK WILL NOT BE MEASURED FOR PAYMENT AND WILL BE CONSIDERED INCIDENTAL TO THE CONTRACT.
5. ALL GUARDRAIL SHALL HAVE A PRELIMINARY LAYOUT. GUARDRAIL POSTS SHALL BE ADJUSTED SO AS TO MISS ANY SHOULDER DRAINS, INLETS, PIPE CULVERTS, STORM SEWER OR ANY OTHER HAZARD THAT MAY INTERFERE WITH GUARDRAIL CONSTRUCTION.

EXAMINED <u>Sept 13</u> 20 <u>07</u>
<u>W.B. J.</u>
PROGRAM IMPLEMENTATION ENGINEER
EXAMINED <u>Sept 13</u> 20 <u>07</u>
<u>W.B. J.</u>
PROGRAM DEVELOPMENT ENGINEER

DISTRICT SIX
EXAMINED <u>August 31</u> 20 <u>07</u>
<u>[Signature]</u>
OPERATIONS ENGINEER

FILE NAME =
c:\projects\d610807\ahsq.dgn

USER NAME = gallowaybj
PLOT SCALE = 100.0000' / IN.
PLOT DATE = Oct-02-2007 01:17:23PM

DESIGNED -
DRAWN -
CHECKED -
DATE -

REVISED -
REVISED -
REVISED -
REVISED -

**STATE OF ILLINOIS
DEPARTMENT OF TRANSPORTATION**

----- GENERAL NOTES -----

SCALE: 50' SHEET NO. 2 OF 5 SHEETS STA. TO STA.

• D-6 GUARDRAIL TERM ENDS 2008

F.A. RTE.	SECTION	COUNTY	TOTAL SHEETS	SHEET NO.
-305	*		5	2
			CONTRACT NO. 72831	

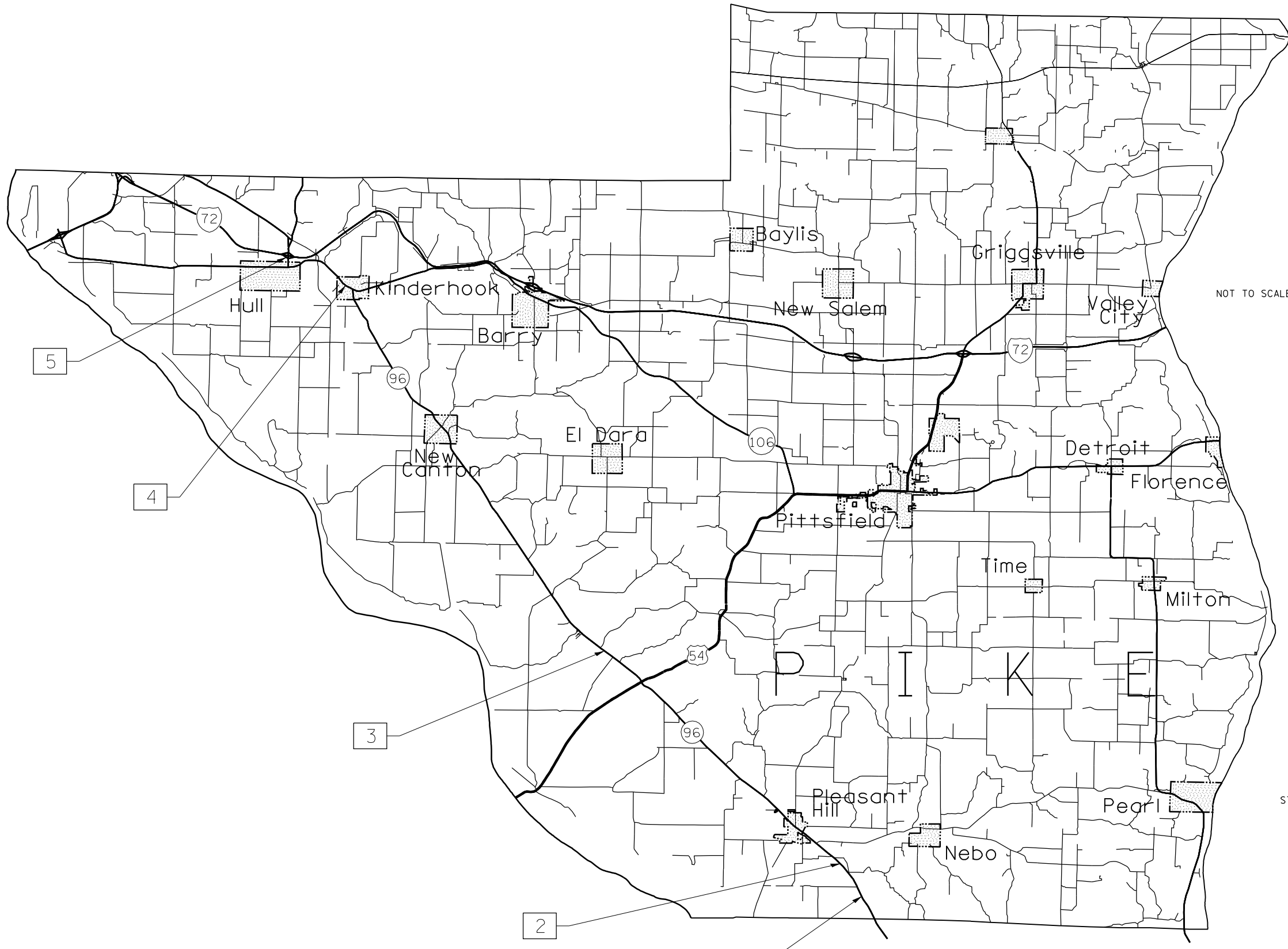
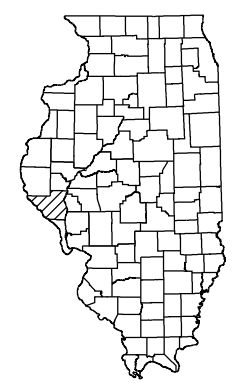
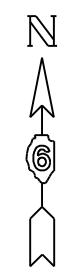
FFD. ROAD DIST. NO. ILLINOIS FFD. AIR PROJECT

GUARDRAIL SCHEDULE

LOCATION NUMBER	STRUCTURE NUMBER	DESCRIPTION OF LOCATION	GENERAL LOCATION	IL 96 SAFETY STATION OF HAZARD	GUARDRAIL REMOVAL	SPBGR TYPE A	SPBGR ATTACHED TO STRUCTURE	GUARDRAIL REFLECTORS	TRAFFIC BARRIER TERMINAL TYPE 1, SPL (TANGENT)	TERMINAL MARKER - DIRECT APPLIED	TRAFFIC BARRIER TERMINAL TYPE 6
				(MILE STA)	(FOOT)	(FOOT)	(FOOT)	(EACH)	(EACH)	(EACH)	(EACH)
IL 96 PIKE COUNTY											
1	BOX CULVERT	0.90 MI. N. OF CALHOUN CO. LINE	WEST SIDE OF IL 96	0.90	100.0	162.5	25.0	4	2	2	--
1	BOX CULVERT	0.90 MI. N. OF CALHOUN CO. LINE	EAST SIDE OF IL 96	0.90	100.0	25.0	25.0	4	2	2	--
2	075-0048 SE QUAD	1.44 MI. N. OF CALHOUN CO. LINE	OVER BAY CREEK	2.41	187.5	75.0	--	4	1	1	1.0
2	075-0048 SW QUAD	1.44 MI. N. OF CALHOUN CO. LINE	OVER BAY CREEK	2.41	125.0	12.5	--	4	1	1	1.0
2	075-0048 NE QUAD	1.44 MI. N. OF CALHOUN CO. LINE	OVER BAY CREEK	2.45	162.5	62.5	--	4	1	1	1.0
2	075-0048 NW QUAD	1.44 MI. N. OF CALHOUN CO. LINE	OVER BAY CREEK	2.45	187.5	75.0	--	4	1	1	1.0
3	BOX CULVERT	2.71 MI. N. OF IL 96/US 54 INT.	WEST SIDE OF IL 96	13.91	50.0	--	--	--	2.0	2.0	--
3	BOX CULVERT	2.71 MI. N. OF IL 96/US 54 INT.	EAST SIDE OF IL 96	13.91	50.0	--	--	--	2.0	2.0	--
4	BOX CULVERT	0.33 MI. W. OF KINDERHOOK	SOUTH SIDE OF IL 96	--	125.0	62.5	--	4	2	2	--
5	075-0089 SE QUAD	STRUCTURE OVER I-72	I-72/IL 96 INTERCHANGE	30.95	25.0	--	--	--	1	1	--
5	075-0089 NW QUAD	STRUCTURE OVER I-72	I-72/IL 96 INTERCHANGE	30.96	25.0	--	--	--	1	1	--
					1137.5	475.0	50.0	28.0	16.0	16.0	4.0

* D-6 GUARDRAIL TERM ENDS 2008

FILE NAME = c:\Projects\d610807\shsch.dgn	USER NAME = laughlin1	DESIGNED -	REVISED -	STATE OF ILLINOIS DEPARTMENT OF TRANSPORTATION	SCHEDULE OF QUANTITIES			F.A.P. RTE.	SECTION	COUNTY	TOTAL SHEETS	SHEET NO.
	PLOT SCALE = 100.0000' / IN.	CHECKED -	REVISED -					304	*	PIKE	5	4
PLOT DATE = Oct-10-2007 11:38:28AM	DATE -	REVISED -	SCALE: 50			SHEET NO. 4 OF 5 SHEETS	STA.	TO STA.	CONTRACT NO. 72B31			
							FED. ROAD DIST. NO.	ILLINOIS	FED. AID PROJECT			



NOT TO SCALE

LEGEND

- FEDERAL-AID INTERSTATE HIGHWAY
- STATE PRIMARY HIGHWAY (U.S. & ILL.)
- MUNICIPALITY
- LOCATION OF PROPOSED IMPROVEMENT

NOTE: SEE SCHEDULE OF QUANTITIES SHEETS FOR DESCRIPTION OF INDIVIDUAL LOCATIONS.

* D-6 GUARDRAIL TERM ENDS 2008

FILE NAME = ct:\Projects\d610807\shplenschematic.dgn	USER NAME = laughtnrl PLOT SCALE = 100.0000' / IN. PLOT DATE = Oct-10-2007 11:38:32AM	DESIGNED - DRAWN - CHECKED - DATE -	REVISED - REVISED - REVISED - REVISED -	STATE OF ILLINOIS DEPARTMENT OF TRANSPORTATION	PLAN SHEET	F.A.P. RTE. 304 SECTION * COUNTY PIKE TOTAL SHEETS 5 SHEET NO. 5 CONTRACT NO. 72B31 FED. ROAD DIST. NO. ILLINOIS FED. AID PROJECT
				SCALE: 50	SHEET NO. 5 OF 5 SHEETS	STA. TO STA.