

FAP RTE.	SECTION	COUNTY	TOTAL SHEETS	SHEET NO.
662	H(B-2)I	SANGAMON	5	1

STATE OF ILLINOIS
DEPARTMENT OF TRANSPORTATION
DIVISION OF HIGHWAYS

**PROPOSED
HIGHWAY PLANS**

FAP 662 (IL RTE. 4)
SECTION H(B-2)I

SANGAMON COUNTY
C-96-107-08

INDEX OF SHEETS:

- 1 COVER SHEET
- 2 GENERAL NOTES
- 3 SUMMARY OF QUANTITIES
- 4, 5 STRUCTURAL PLANS

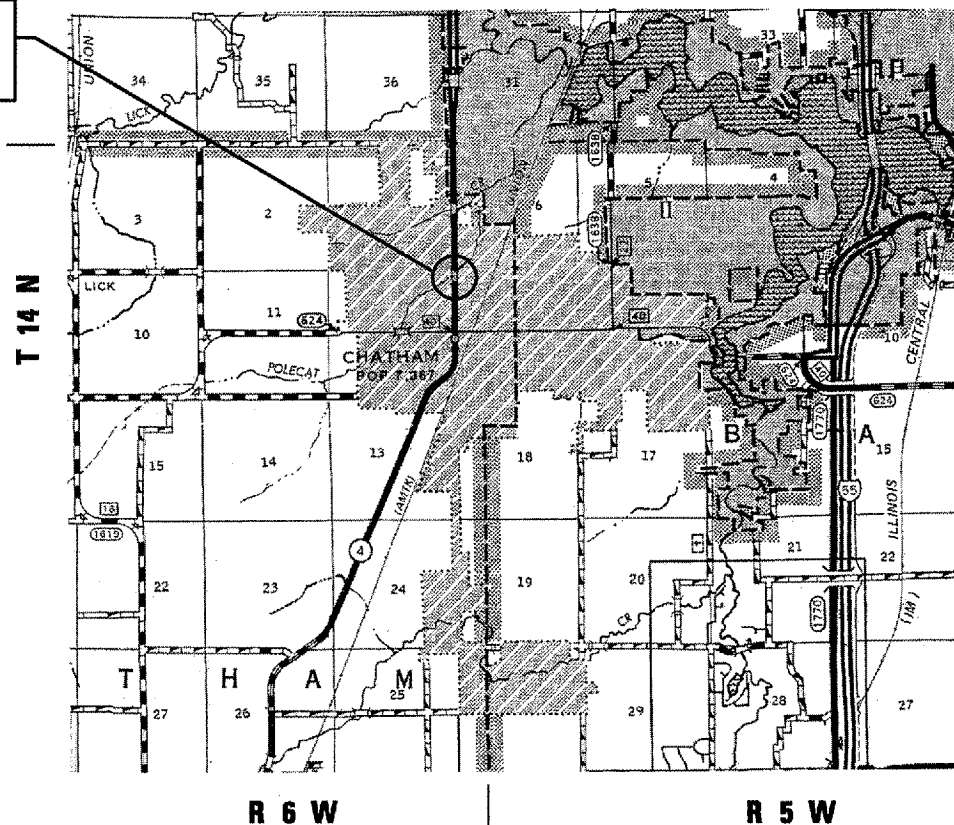
HIGHWAY STANDARDS

000001-05
701101-01
701106-01
701901

D-96-007-08

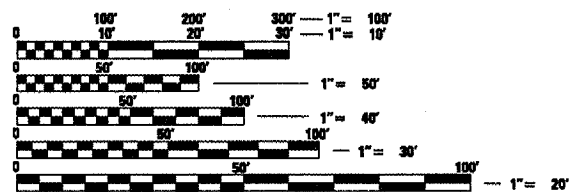


PROJECT LOCATION
S.N. 084-0172
IL RTE. 4 OVER POLECAT CREEK



LOCATION MAP

A.D.T. = 15,800 (YEAR 2007)



FULL SIZE PLANS HAVE BEEN PREPARED USING STANDARD ENGINEERING SCALES. REDUCED SIZED PLANS WILL NOT CONFORM TO STANDARD SCALES. IN MAKING MEASUREMENTS ON REDUCED PLANS, THE ABOVE SCALES MAY BE USED.

J.U.L.I.E.
JOINT UTILITY LOCATION INFORMATION FOR EXCAVATION
1-800-892-0123

CONTRACT NO. 72B51

STATE OF ILLINOIS
DEPARTMENT OF TRANSPORTATION
DIVISION OF HIGHWAYS

SUBMITTED *Oct 3, 2007*
Christine M. Reed
DEPUTY DIRECTOR OF HIGHWAYS, REGION ENGINEER

Dec 7, 2007
Eric E. Harn
INTERIM ENGINEER OF DESIGN AND ENVIRONMENT

Dec 7, 2007
Christine M. Reed
DIRECTOR OF HIGHWAYS, CHIEF ENGINEER

**PRINTED BY THE AUTHORITY
OF THE STATE OF ILLINOIS**

Rev.

PROJECT ENGINEER: SAL MADONIA (217) 782-4761
SQUAD LEADER: MARCUS BRUCE (217) 524-0946

GENERAL NOTES:

ANY REFERENCE TO THE STANDARDS THROUGHOUT THE PLANS SHALL BE INTERPETED TO BE THE LATEST STANDARD OF THE DEPARTMENT AS INCLUDED IN THE PLANS.

THE CONTRACTOR IS RESPONSIBLE FOR CONTACTING J. U. L. I. E. A MINIMUM OF 72 HOURS PRIOR TO COMMENCING WORK - (800) 892-0123

PLAN DIMENSIONS AND DETAILS RELATIVE TO THE EXISTING STRUCTURE HAVE BEEN TAKEN FROM EXISTING PLANS AND ARE SUBJECT TO NOMINAL CONSTRUCTION VARIATIONS. IT SHALL BE THE CONTRACTOR'S RESPONSIBILITY TO VERIFY SUCH DIMENSIONS AND DETAILS IN THE FIELD AND MAKE NECESSARY APPROVED ADJUSTMENTS PRIOR TO CONSTRUCTION OR ORDERING OF MATERIALS. SUCH VARIATIONS SHALL NOT BE CAUSE FOR ADDITIONAL COMPENSATION OR A CHANGE IN THE SCOPE OF WORK, HOWEVER, THE CONTRACTOR WILL BE PAID FOR THE QUANTITY ACTUALLY FURNISHED AT THE UNIT PRICE FOR THE WORK.

DISTRICT SIX	
EXAMINED <u>October 3</u> 20 <u>07</u>	<i>[Signature]</i>
OPERATIONS ENGINEER	
EXAMINED <u>Oct 3</u> 20 <u>07</u>	<i>[Signature]</i>
PROGRAM IMPLEMENTATION ENGINEER	
EXAMINED <u>Oct 3</u> 20 <u>07</u>	<i>[Signature]</i>
PROGRAM DEVELOPMENT ENGINEER	

FILE NAME =	USER NAME = aiegler-t	DESIGNED -	REVISED -
ci:\projects\660788\ahsgennotes.dgn		DRAWN -	REVISED -
	PLOT SCALE = 100.0000 / IN.	CHECKED -	REVISED -
	PLOT DATE = Sep-27-2007 10:53:14AM	DATE -	REVISED -

**STATE OF ILLINOIS
DEPARTMENT OF TRANSPORTATION**

GENERAL NOTES	
SCALE: _____	SHEET NO. 1 OF 1 SHEETS
STA. _____	TO STA. _____

FAP RTE.	SECTION	COUNTY	TOTAL SHEETS	SHEET NO.
662	HRB-211	SANGAMON	5	2
				CONTRACT NO. 72851

SUMMARY OF QUANTITIES

CODE #	PAY ITEM	UNIT	<i>SFTY-2A</i> 100% STATE QUANTITY
50500405	FURNISHING AND ERECTING STRUCTURAL STEEL	POUND	26890
67100100	MOBILIZATION	L SUM	1
70103700	TRAFFIC CONTROL COMPLETE	L SUM	1

STATE OF ILLINOIS
DEPARTMENT OF TRANSPORTATION

ROUTE NO.	SECTION	COUNTY	SHEETS	SHEET	SHEET NO. 1
		Sangamon	5	4	2 SHEETS
FED. ROAD DIST. NO. 7	ILLINOIS	FED. AID PROJECT			

Contract Number: 72B51

GENERAL NOTES

All structural steel shall conform to AASHTO Classification M-270 Gr. 36, unless otherwise noted.
Plan dimensions and details relative to existing plans are subject to routine variations. The Contractor shall field verify existing dimensions and details affecting new construction and make necessary approved adjustments prior to construction or ordering of materials. Such variations shall not be cause for additional compensation for a change in scope of the work, however, the Contractor will be paid for the quantity actually furnished based upon the unit price bid for the work.

The contractor is advised that the existing PPC Deck Beams are in a deteriorated condition with reduced load carrying capacity. It is the contractor's responsibility to account for the condition of the beams when developing construction procedures.

See Section 584 of the Standard Specifications for Epoxy Grouting of Threaded Rods; Minimum embedment 9".

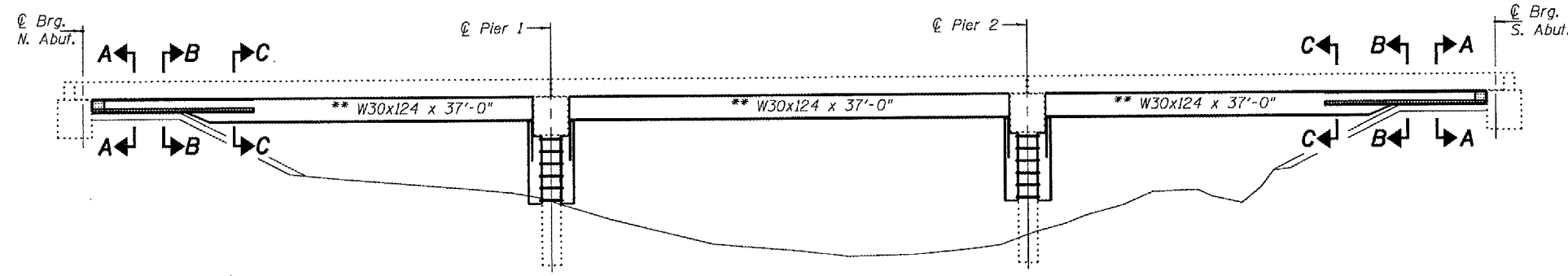
If the contractor's procedure for placement of beams involves placement of cranes or other heavy equipment on the bridge, a detailed procedure shall be submitted to the Engineer for approval. The procedure shall include calculations, prepared and sealed by an Illinois Licensed Structural Engineer, verifying that the equipment and procedure used will not overstress the existing beams. To distribute load to multiple beams and protect the existing surface, in all cases a double layer mat of heavy timbers shall be used at all times under crane tracks or wheels and any outriggers in the down position. If necessary, shims shall be used under the crane mat to ensure uniform contact with the underlying beams.

The cost of epoxy grouting threaded rods on the pier cap and beams shall be included with Furnishing and Erecting Structural Steel.

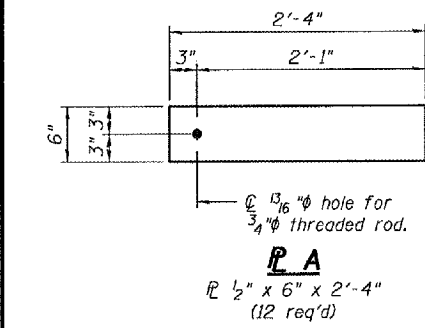
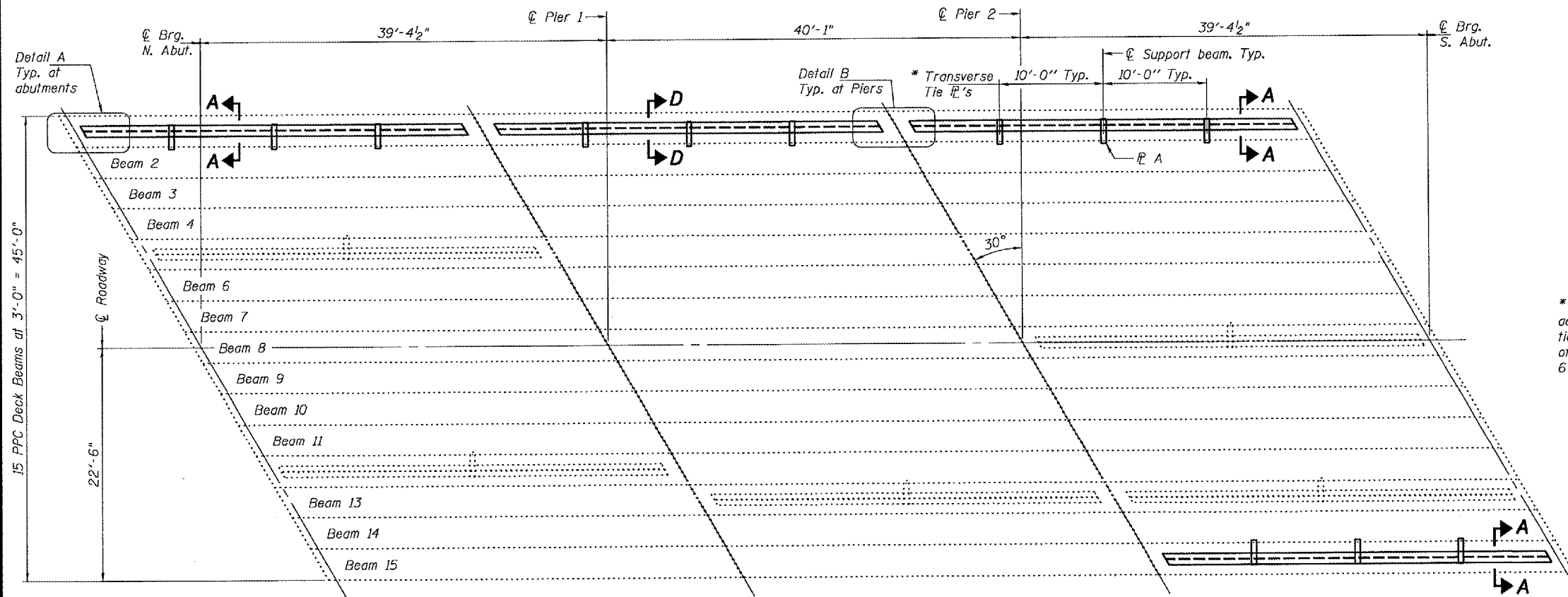
The cost of any excavation required shall be included with Furnishing and Erecting Structural Steel.

The Contractor has the option of using used steel. See Special Provisions. For Section D-D see Sheet 2 of 2.

* @ Transverse tie @'s (3 per span). Place additional shims at midpoints between tie @'s. Securely weld shims to top flange of support beam. Min. shim size is 6" x flange width.



ELEVATION



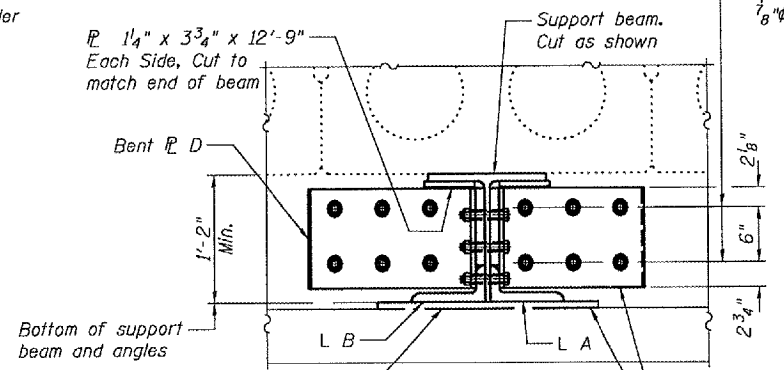
**Contractor is to verify beam length prior to ordering material. Other sections meeting the section modulus requirements shown may be allowed subject to approval by the Bureau of Bridges and Structures. Maximum Girder depth = 33". No additional payment will be allowed if the contractor chooses a heavier steel section than the one specified in the plans



DESIGNED: *Ralph E. Anderson*
 CHECKED: *Alvin J. Holloway*
 DRAWN: *[Signature]*
 CHECKED: *[Signature]*
 November 1, 2007
 EXAMINED: *[Signature]*
 PASSED: *[Signature]*
 ENGINEER OF BRIDGES AND STRUCTURES

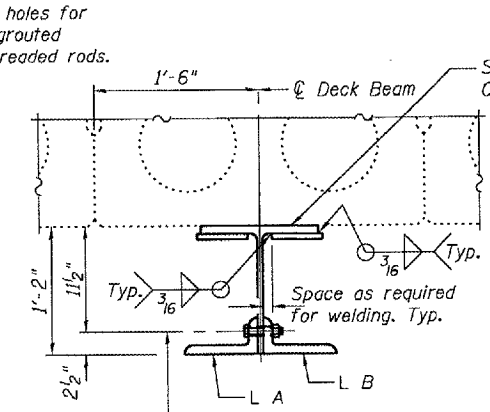
Expires: November 30, 2008

PLAN

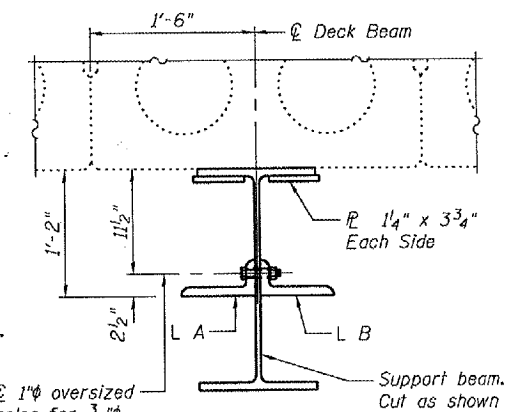


SECTION A-A

1'-0" x 2'-0" @ of thickness required to shim tightly between beam and neoprene pad. (To remain in place).
 1'-0" x 2'-0" Neoprene leveling pad on slopewall



SECTION B-B



SECTION C-C

TOTAL BILL OF MATERIAL

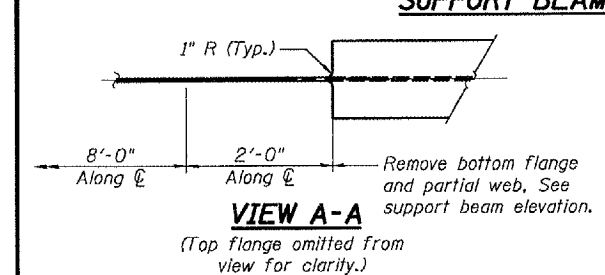
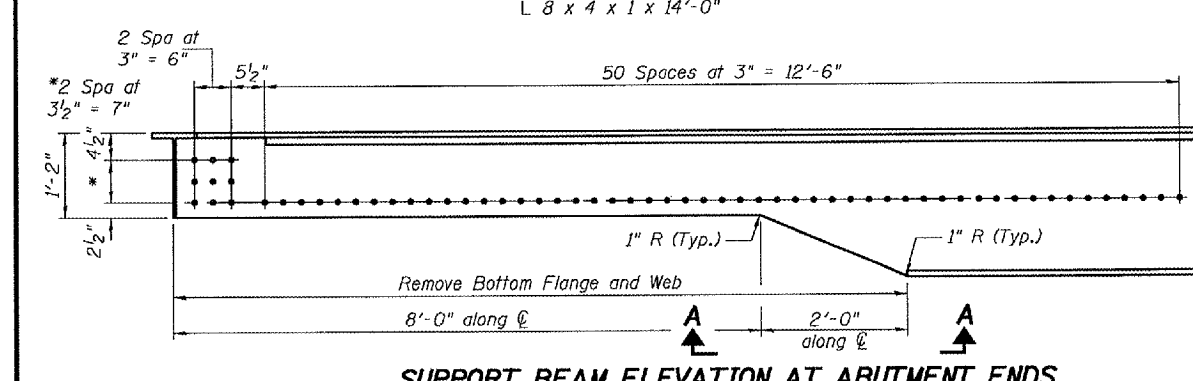
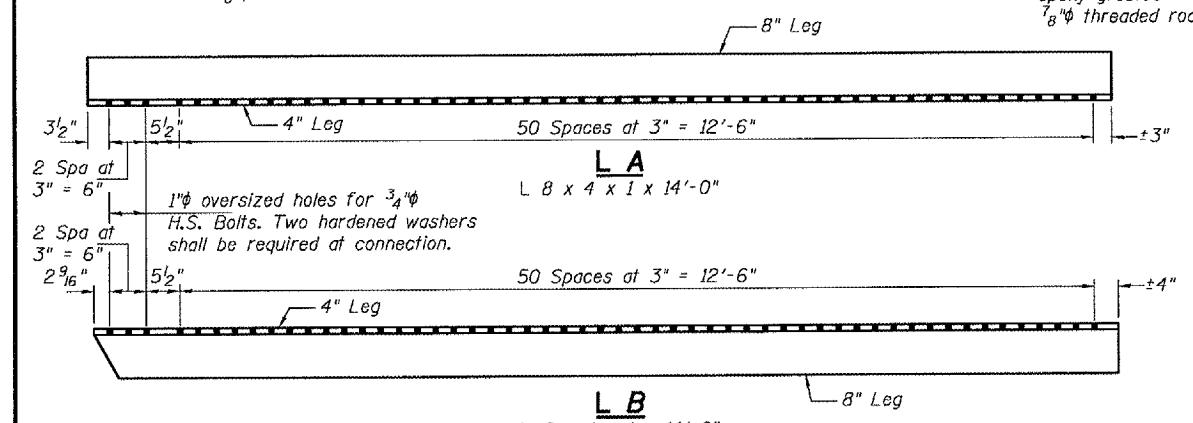
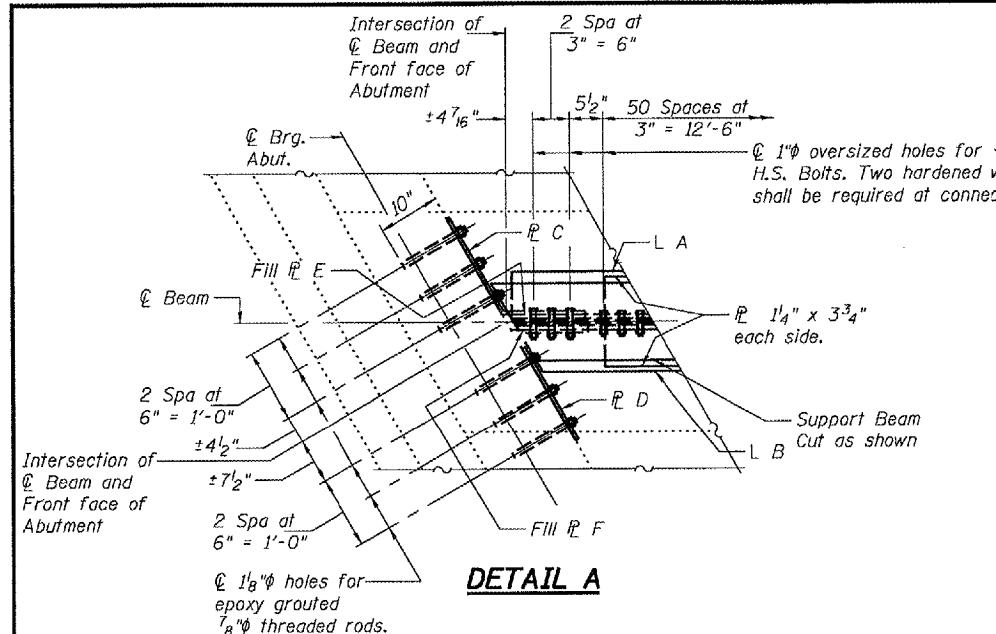
ITEM	UNIT	QUANTITY
Furnishing and Erecting Structural Steel	Pound	26,890

**PLAN AND ELEVATION
RT 4 OVER POLECAT CREEK
SANGAMON COUNTY
SN 084-0172**

STATE OF ILLINOIS
DEPARTMENT OF TRANSPORTATION

ROUTE NO.	SECTION	COUNTY	TOTAL SHEETS	SHEET NO.	SHEET NO. 2
		Sangamon	5	5	2 SHEEYS
FED. ROAD DIST. NO. 7	ILLINOIS	FED. AID PROJECT			

Contract Number: 72B51

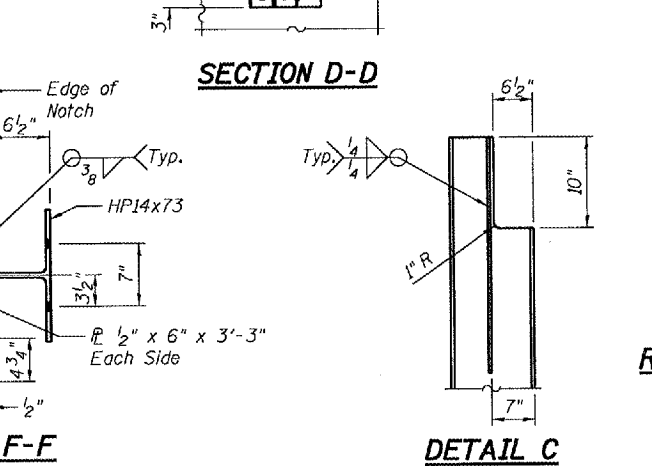
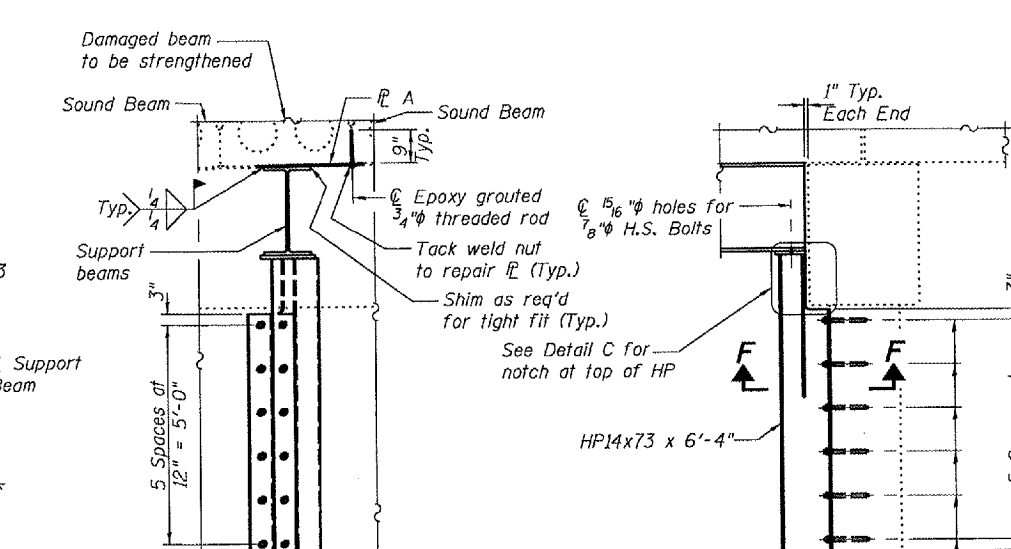
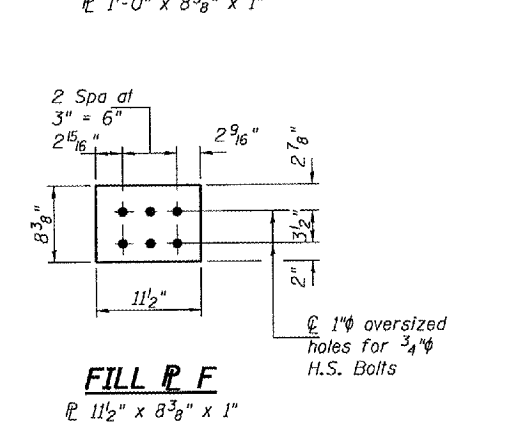
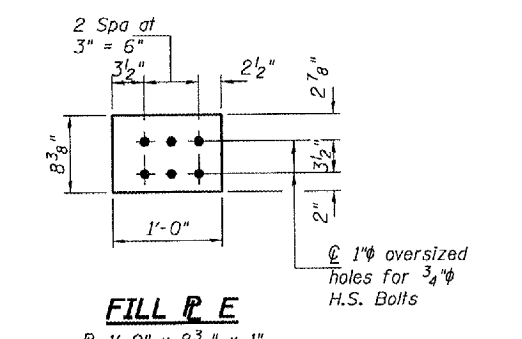
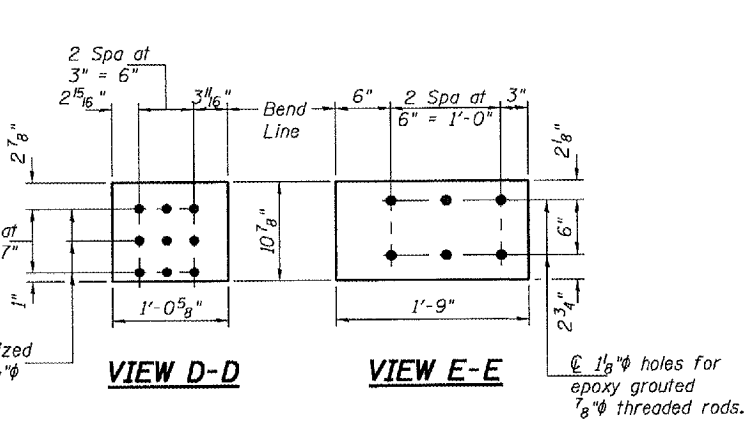
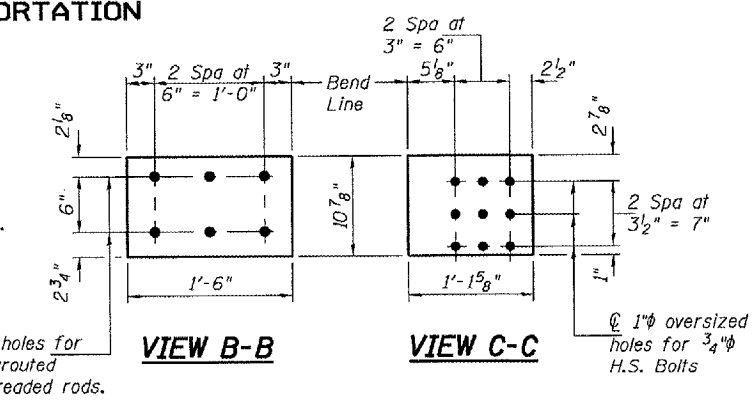
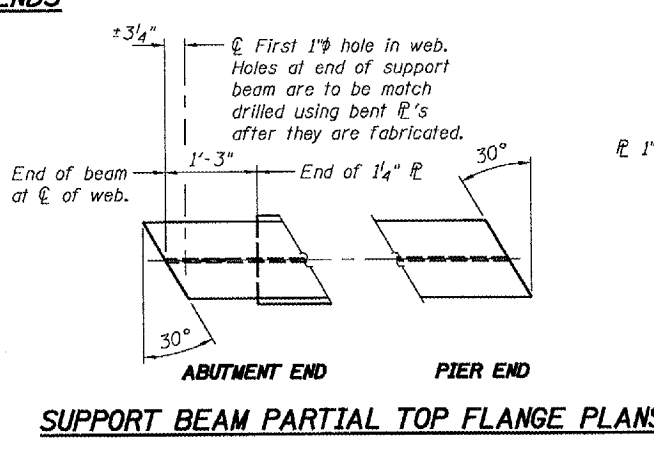
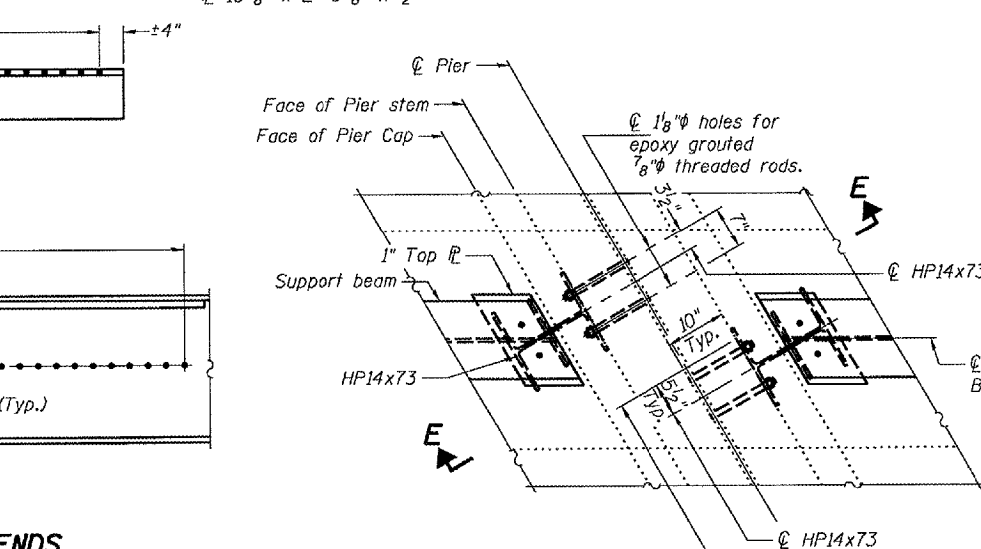
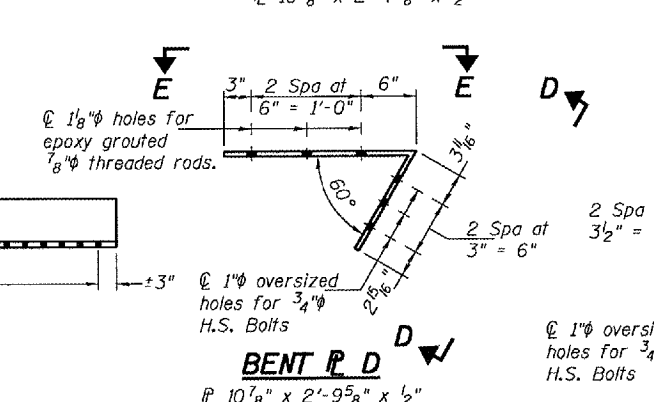
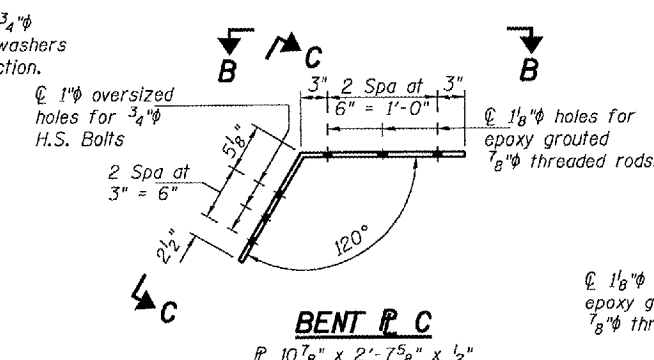


DESIGNED	D.A.B.
CHECKED	A.T.H.
DRAWN	Drew Christopher
CHECKED	D.A.B. A.T.H.

November 1, 2007

EXAMINED *Carl Prosser*
ENGINEER OF STRUCTURAL SERVICES

PASSED *Ralph E. Anderson*
ENGINEER OF BRIDGES AND STRUCTURES



REPAIR DETAILS
RT 4 OVER POLECAT CREEK
SANGAMON COUNTY
SN 084-0172