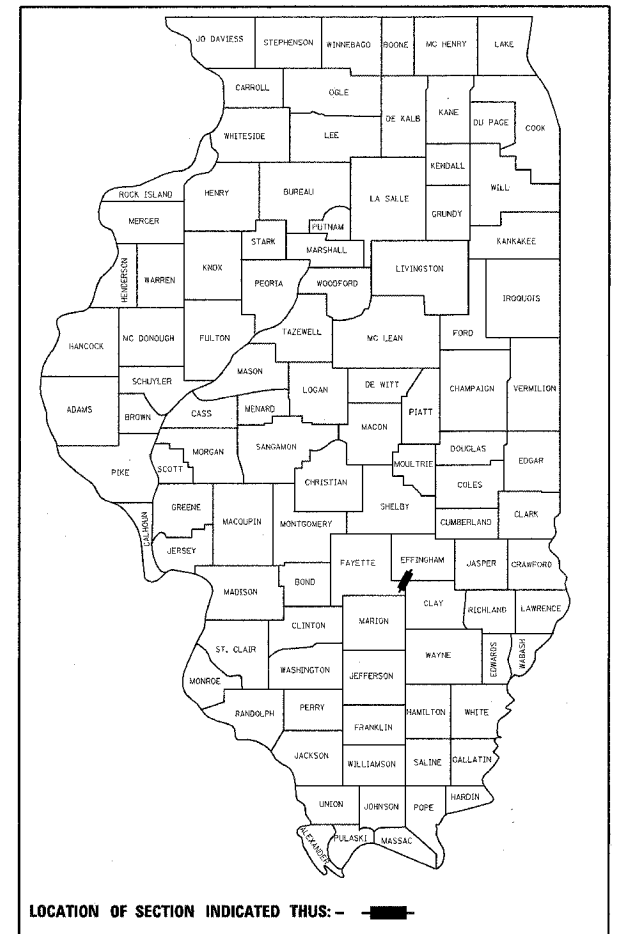


F.A.I. RTE.	SECTION	COUNTY	TOTAL SHEETS	SHEET NO.
57	*	**	86	1

• D7 SAFETY 2008-1  
 \*\* EFFINGHAM, CLAY, AND FAYETTE

D-97-038-07



STATE OF ILLINOIS  
 DEPARTMENT OF TRANSPORTATION  
 DIVISION OF HIGHWAYS

**PROPOSED  
 HIGHWAY PLANS**

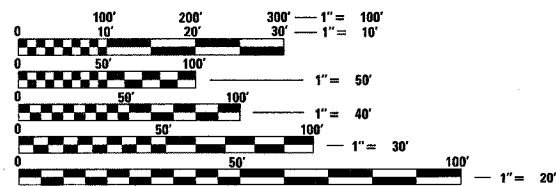
FAI ROUTE 57 (I-57)  
 SECTION D7 SAFETY 2008-1  
 PROJECT: ACHSIP-057-3 (157)145  
 EFFINGHAM, CLAY, AND FAYETTE COUNTIES

C-97-068-07

FOR INDEX OF SHEETS, SEE SHEET NO. 2

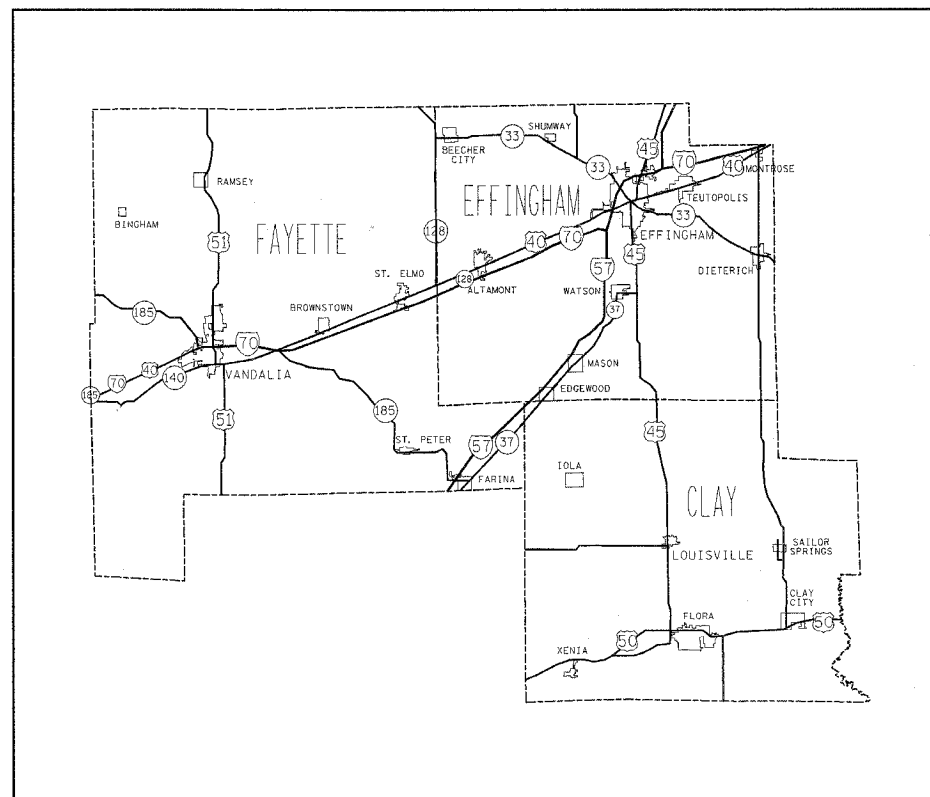
LOCATION	STRUCTURE NO.	STATION
1	025-0060	4889+51.3
2	025-0053	4780+17.28
3	025-0061	4726+61.05
4	025-0042	4646+79.77
5	025-0073	4481+40
6	025-0043	4430+53.37
7	013-0027	4204+75
8	026-0082	3201+00
9	026-0081	3089+00
10	026-0053	3045+98.8
11	026-0071	2935+23.51
SIGN TRUSS	M. P. 157.84	4974+48
SIGN TRUSS	M. P. 157.30	4946+98

CURRENT ADT  
 FAI 57 (I-57) = 15,300 (2006)



FULL SIZE PLANS HAVE BEEN PREPARED USING STANDARD ENGINEERING SCALES. REDUCED SIZED PLANS WILL NOT CONFORM TO STANDARD SCALES. IN MAKING MEASUREMENTS ON REDUCED PLANS, THE ABOVE SCALES MAY BE USED.

J.U.L.I.E.  
 JOINT UTILITY LOCATION INFORMATION FOR EXCAVATION  
 1-800-892-0123



LOCATION MAP

PROJECT ENGINEER : MARK DALGHERTY  
 SQUAD LEADER : JOYCE HEMMEN  
 DESIGNER : BRIAN BIERMAN  
 TELEPHONE : 217/342-3951 EX

CONTRACT NO. 74248

STATE OF ILLINOIS  
 DEPARTMENT OF TRANSPORTATION  
 DIVISION OF HIGHWAYS

SUBMITTED *October 25* 2007  
*Christine M. Reed*  
 DEPUTY DIRECTOR OF HIGHWAYS, REGION ENGINEER

*December 7, 2007*  
*Eric E. Harman*  
 ENGINEER OF DESIGN AND ENVIRONMENT

*December 7, 2007*  
*Christine M. Reed*  
 DIRECTOR OF HIGHWAYS, CHIEF ENGINEER

PRINTED BY THE AUTHORITY  
 OF THE STATE OF ILLINOIS