

STATE OF ILLINOIS
 DEPARTMENT OF TRANSPORTATION
 DIVISION OF HIGHWAYS
**PROPOSED
 HIGHWAY PLANS**

F.A.U. RTE.	SECTION	COUNTY	TOTAL SHEETS	SHEET NO.
9296	65BR	MONROE	22	1

CONTRACT NO. 76387

INDEX OF SHEETS

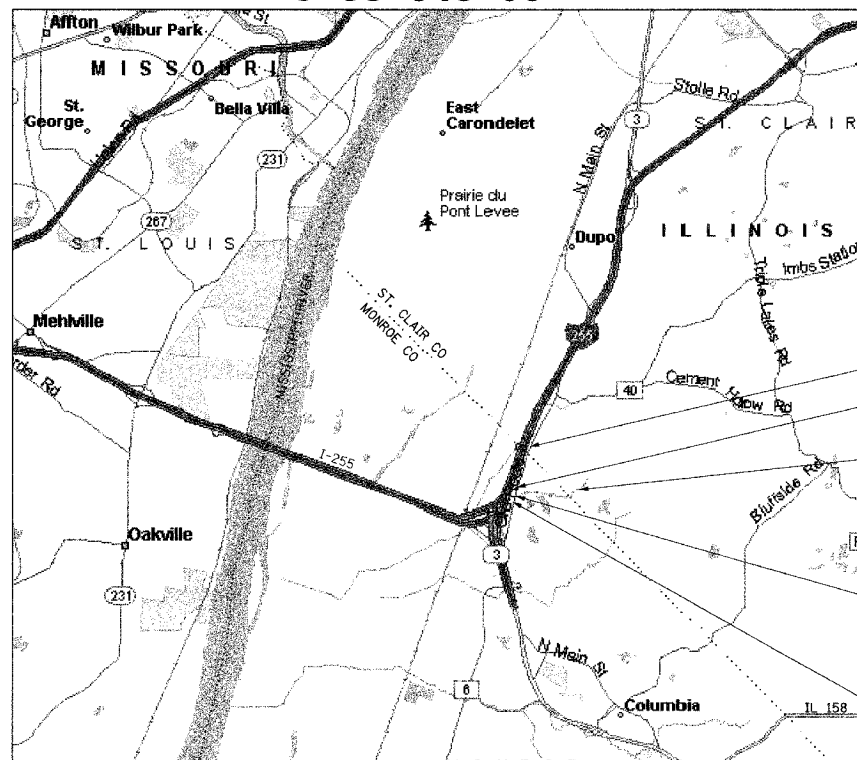
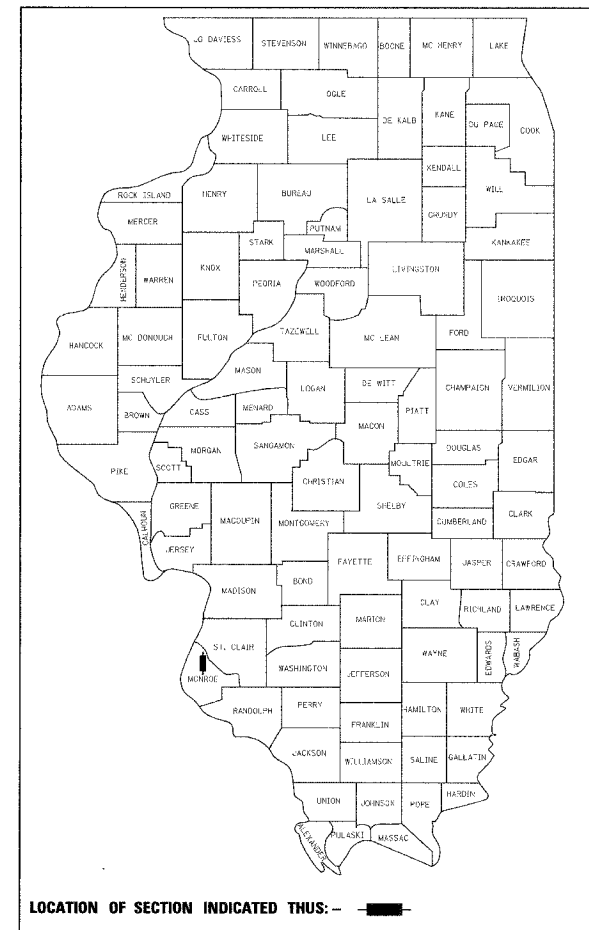
- 1 COVER SHEET
- 2 INDEX, STANDARDS, & GENERAL NOTES
- 3 SUMMARY OF QUANTITIES
- 4-5 SCHEDULE OF QUANTITIES
- 6 TYPICAL SECTION
- 7 PLAN & PROFILE
- 8 DETOUR ROUTE & TRAFFIC CONTROL
- 9-13 STRUCTURE PLANS
- 14 PAVEMENT REMOVAL DETAIL
- 15 SOIL BORINGS
- 16 ENTRANCE DETAILS
- 17-22 CROSS-SECTIONS

TRAFFIC DATA

ADT = 3800 (2004)
 ADT = 5100 (2024)
 SU = 5.2%
 MU = 3.2%

F.A.U. ROUTE 9296 (OLD IL RTE 3)
 SECTION 65BR
~~PROJECT NO. ()~~
 BRIDGE REPLACEMENT
 MONROE COUNTY

C-98-048-06



OLD IL RTE 3
 BEGIN IMPROVEMENTS
 STA 24+84
 HILL LAKE CREEK
 PROP THREE SIDED PRECAST
 CONCRETE STRUCTURE
 SN 067-0041
 STA 26+34
 END IMPROVEMENTS
 STA 27+84

STATE OF ILLINOIS
 DEPARTMENT OF TRANSPORTATION
 DIVISION OF HIGHWAYS

SUBMITTED October 25, 2007

Mary C. Jamie
 DEPUTY DIRECTOR OF HIGHWAYS, REGION 5 ENGINEER

December 7, 2007

Eric S. Haral
 INTERIM ENGINEER OF DESIGN AND ENVIRONMENT

December 7, 2007

Christine M. Reed
 DIRECTOR OF HIGHWAYS, CHIEF ENGINEER

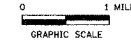
Benton and Associates, Inc.
 CONSULTING ENGINEERS / LAND SURVEYORS
 JACKSONVILLE, ILLINOIS 62650
 JANUARY 2007

**PRINTED BY THE AUTHORITY
 OF THE STATE OF ILLINOIS**



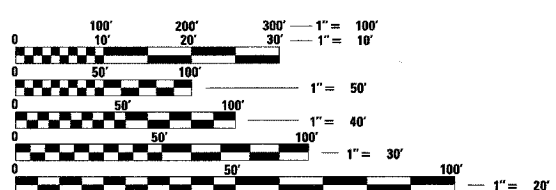
William J. Sleeman 11/30/07
 ILLINOIS PROFESSIONAL NO. 048605 EXPIRES

LOCATION MAP



GROSS AND NET LENGTH OF PROJECT: 300 FEET (0.0568 MILES)

LATITUDE X: 38°28' 41"
 LONGITUDE Y: 90°13' 18"



FULL SIZE PLANS HAVE BEEN PREPARED USING STANDARD ENGINEERING SCALES. REDUCED SIZED PLANS WILL NOT CONFORM TO STANDARD SCALES. IN MAKING MEASUREMENTS ON REDUCED PLANS, THE ABOVE SCALES MAY BE USED.

J.U.L.I.E.
 JOINT UTILITY LOCATION INFORMATION FOR EXCAVATION
 1-800-892-0123

CONTRACT NO. 76387

PROJECT ENGINEER: PATTI LEBEAU (618)346-3179
 SQUAD CONTACT: ARTHUR MUEHLFELD (618) 346-3209