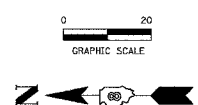
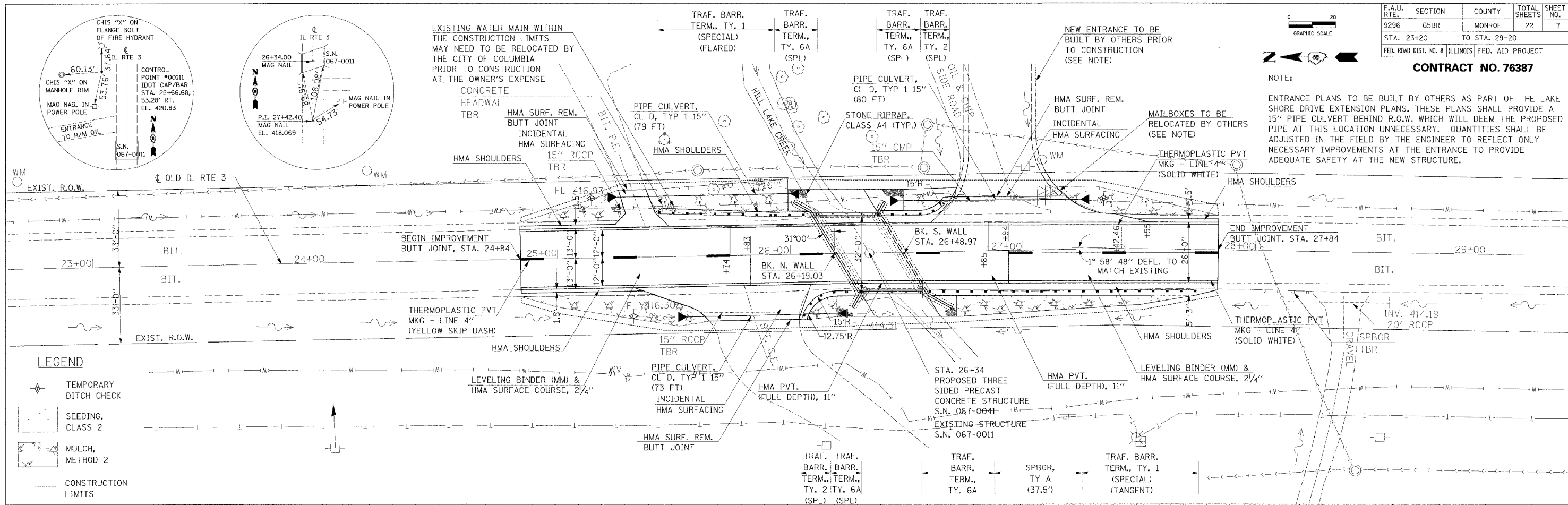


F.A.U. RTE.	SECTION	COUNTY	TOTAL SHEETS	SHEET NO.
9296	65BR	MONROE	22	7
STA. 23+20		TO STA. 29+20		
FED. ROAD DIST. NO. 8		ILLINOIS		FED. AID PROJECT

CONTRACT NO. 76387



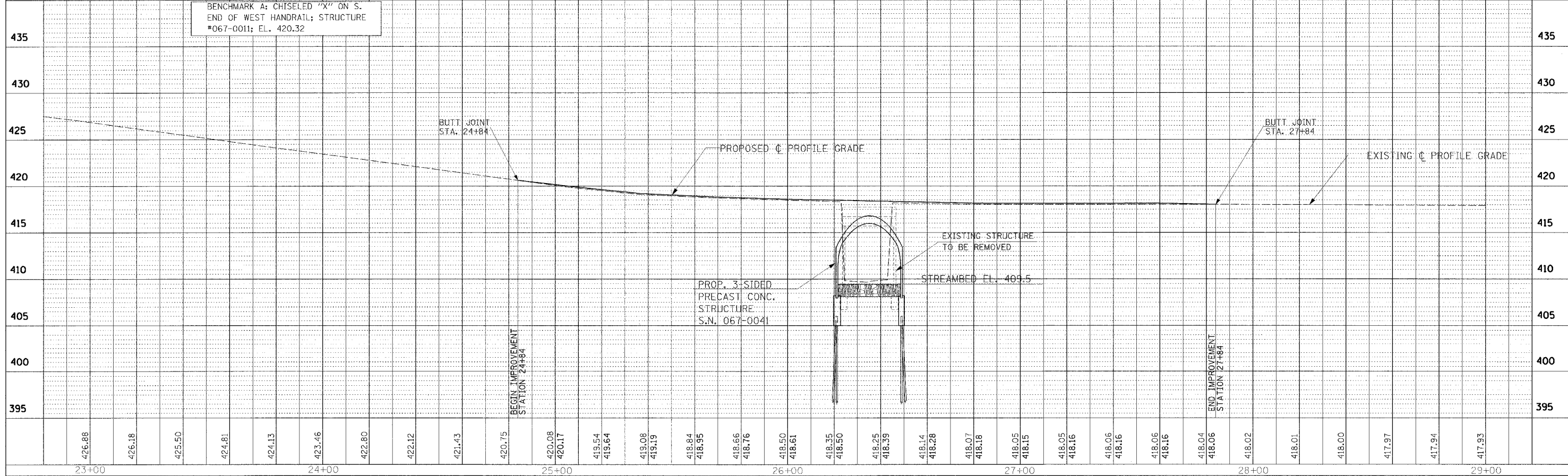
NOTE:
ENTRANCE PLANS TO BE BUILT BY OTHERS AS PART OF THE LAKE SHORE DRIVE EXTENSION PLANS. THESE PLANS SHALL PROVIDE A 15" PIPE CULVERT BEHIND R.O.W. WHICH WILL DEEM THE PROPOSED PIPE AT THIS LOCATION UNNECESSARY. QUANTITIES SHALL BE ADJUSTED IN THE FIELD BY THE ENGINEER TO REFLECT ONLY NECESSARY IMPROVEMENTS AT THE ENTRANCE TO PROVIDE ADEQUATE SAFETY AT THE NEW STRUCTURE.



- LEGEND**
- TEMPORARY DITCH CHECK
 - SEEDING, CLASS 2
 - MULCH, METHOD 2
 - CONSTRUCTION LIMITS

DATE	BY
DATE	BY
DATE	BY

DATE	BY
DATE	BY
DATE	BY



STA. 23+00 TO 29+00