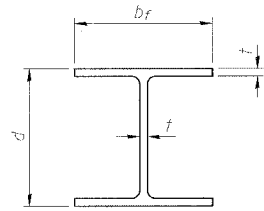


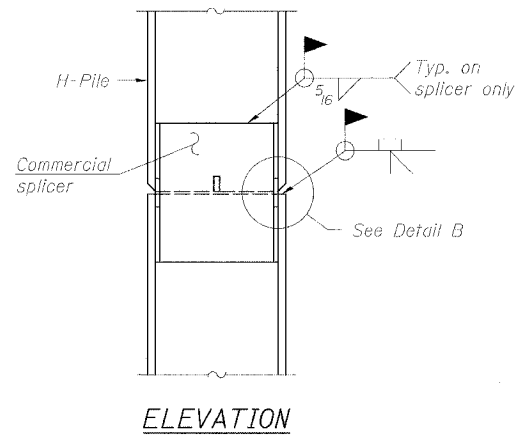
STATE OF ILLINOIS
DEPARTMENT OF TRANSPORTATION

ROUTE NO.	SECTION	COUNTY	TOTAL SHEETS	SHEET NO.	SHEET NO. 5 5 SHEETS
FAU 9296	65BR	MONROE	22	13	
FED. ROAD DIST. NO. 7		MILLING		F.S.A. NO. PROJECT	
Contract # 76381					

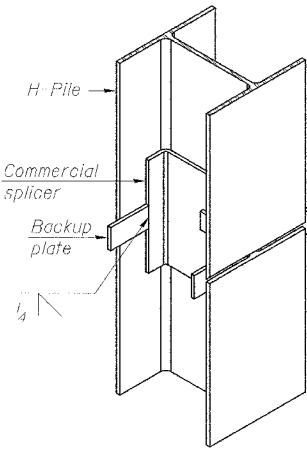


STEEL PILE TABLE

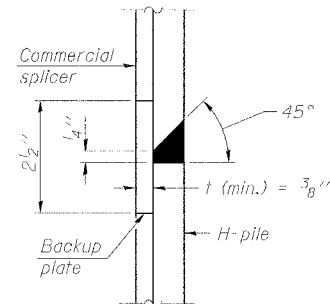
Designation	Depth d	Flange width br	Web and Flange thickness t	Encasement diameter A
HP 14x117	14 1/4"	14 7/8"	13/16"	30"
x102	14"	14 3/4"	5/16"	30"
x89	13 7/8"	14 3/4"	5/8"	30"
x73	13 5/8"	14 5/8"	1/2"	30"
HP 12x84	12 1/4"	12 1/4"	5/16"	24"
x74	12 1/8"	12 1/4"	5/8"	24"
x63	12"	12 1/8"	1/2"	24"
x53	11 3/4"	12"	7/16"	24"
HP 10x57	10"	10 1/2"	9/16"	24"
x42	9 3/4"	10 8/8"	7/16"	24"
HP 8x36	8"	8 1/8"	7/16"	18"



ELEVATION

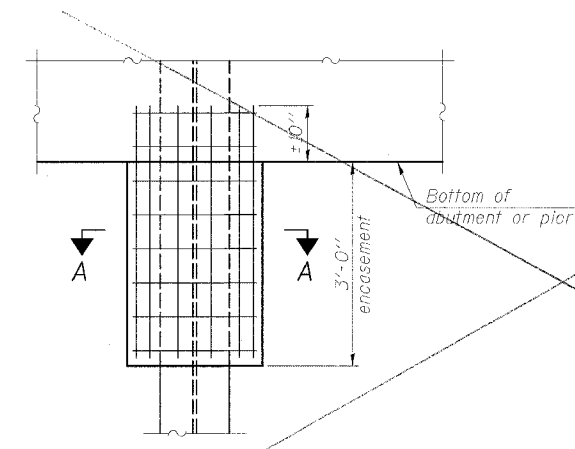


ISOMETRIC VIEW



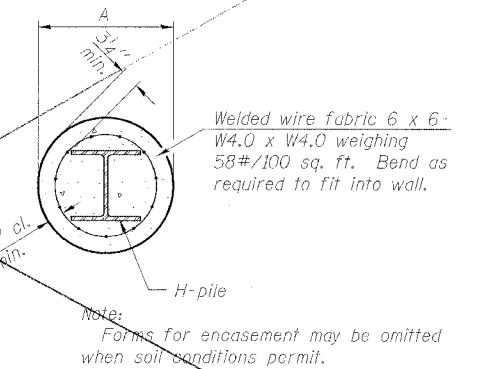
DETAIL "B"

WELDED COMMERCIAL SPLICE

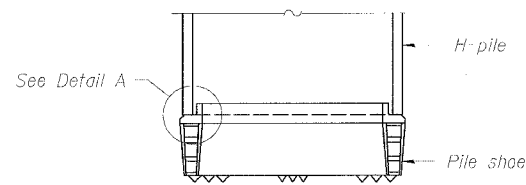


ELEVATION

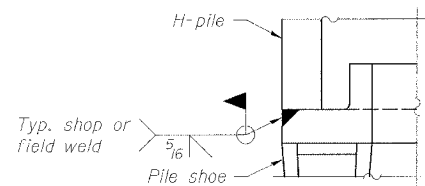
PILE ENCASEMENT



SECTION A-A

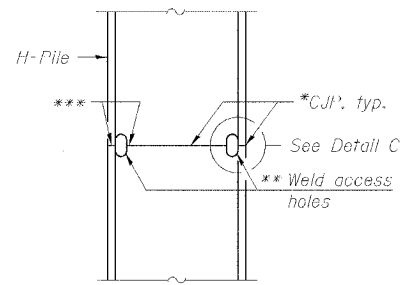


ELEVATION

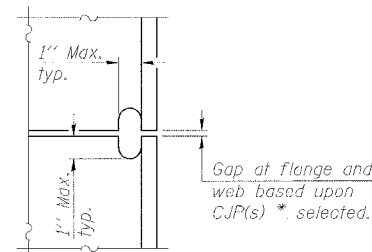


DETAIL A

H-PILE SHOE ATTACHMENT

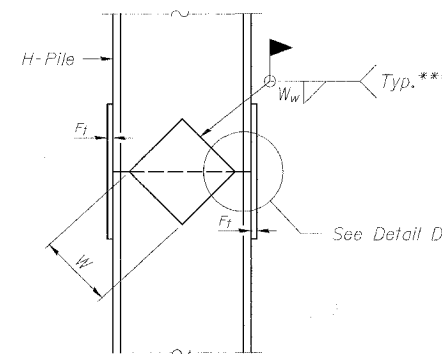


ELEVATION

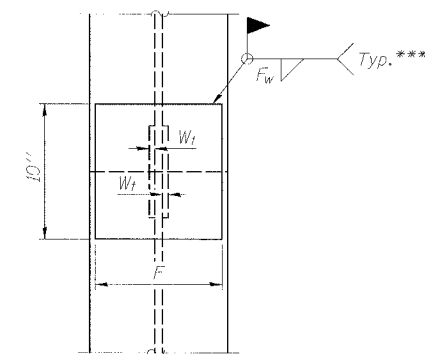


DETAIL C

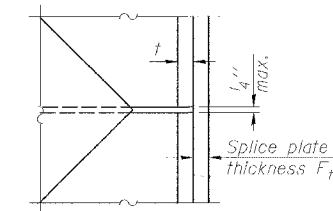
COMPLETE PENETRATION WELD SPLICE



ELEVATION



END VIEW



DETAIL D

WELDED PLATE FIELD SPLICE

Designation	F	Ft	Fw	W	Wt	Ww
HP 12x53	10"	5/8"	1/2"	6 1/2"	1/2"	3/8"

STEEL H-PILE DETAIL
OLD IL ROUTE 3
OVER
HILL LAKE CREEK
F.A.U. ROUTE 9296
SECTION 65BR
MONROE COUNTY
STATION 26+34
STRUCTURE NO. 067-0041

DESIGNED	LEL
CHECKED	REG
DRAWN	LEL
CHECKED	-

F-HP

11-1-06

- * Use joint conforming to Figure 3.4 in AWS D1.1, Structure Welding Code - Steel.
- ** Preparation per Fig. 5.2 in AWS D1.1, Structure Welding Code - Steel.
- *** Interrupt welds 1/4" from end of each pile.

Note:
The steel H-piles shall be according to
AASHTO M270 Grade 50.

BA BENTON & ASSOCIATES, INC.
Consulting Engineers / Land Surveyors
1970 West Lafayette Ave. Jacksonville, IL 62650
Phone: 217-245-4146 Fax: 217-245-4149
IL Design Firm Registration No. 184-000852