

F.A.E. RTE.	SECTION	COUNTY	TOTAL SHEETS	SHEET NO.
310	60-15HB	MADISON	185	13
STA.	TO STA.			
FED. ROAD DIST. NO.	ILLINOIS	FED. AID PROJECT		
CONTRACT NO. 76626				

FAP ROUTE 310

PR FAP 310 CURVE NO 1
 PI STA = 36+194.086
 $\Delta = 70^\circ 24' 53''$ (RT)
 T = 896.132 m
 R = 1,270.000 m
 L = 1,560.792 m
 E = 284.333 m
 SE = 4.1%
 PC STA = 35+297.954
 PT STA = 36+858.745

WENZEL ROAD

EXIST. CURVE W1
 PI STA. 9+628.264
 $\Delta = 55^\circ 21' 36''$ (RT)
 T = 25.704 m
 R = 49.000 m
 L = 47.345 m
 E = 6.332 m
 PC STA. 9+602.560
 PT STA. 9+649.905

PROP. CURVE NO.1
 PI STA. 9+753.208
 $\Delta = 21^\circ 42' 17''$ (LT)
 T = 37.383 m
 R = 195.000 m
 L = 73.870 m
 E = 3.651 m
 PC STA. 9+715.825
 PT STA. 9+789.695
 S.E. = 6.0%

PROP. CURVE NO.2
 PI STA. 10+152.789
 $\Delta = 48^\circ 59' 23''$ (RT)
 T = 88.8453 m
 R = 195.000 m
 L = 166.7309 m
 E = 19.2860 m
 PC STA. 10+063.944
 PT STA. 10+230.675
 S.E. = 6.0%

PROP. CURVE NO.3
 PI STA. 10+436.175
 $\Delta = 76^\circ 18' 06''$ (LT)
 T = 113.902 m
 R = 145.000 m
 L = 193.099 m
 E = 39.387 m
 PC STA. 10+322.273
 PT STA. 10+515.371
 S.E. = 6.0%

SERVICE DRIVE #1

PROP. CURVE SD1C1
 PI STA = 19+979.133
 $\Delta = 57^\circ 24' 28''$ (LT)
 T = 16.427 m
 R = 30.000 m
 L = 30.059 m
 E = 4.203 m
 PC STA = 19+962.706
 PT STA = 19+992.765
 S.E. = N.C.

PRIVATE DRIVE

PROP. CURVE PD1
 PI STA = 29+842.431
 $\Delta = 27^\circ 14' 48''$ (LT)
 T = 2.908 m
 R = 12.000 m
 L = 5.707 m
 E = 0.347 m
 PC STA = 29+839.523
 PT STA = 29+845.230
 S.E. = N.C.

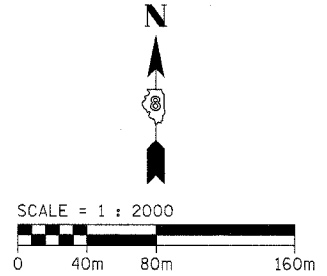
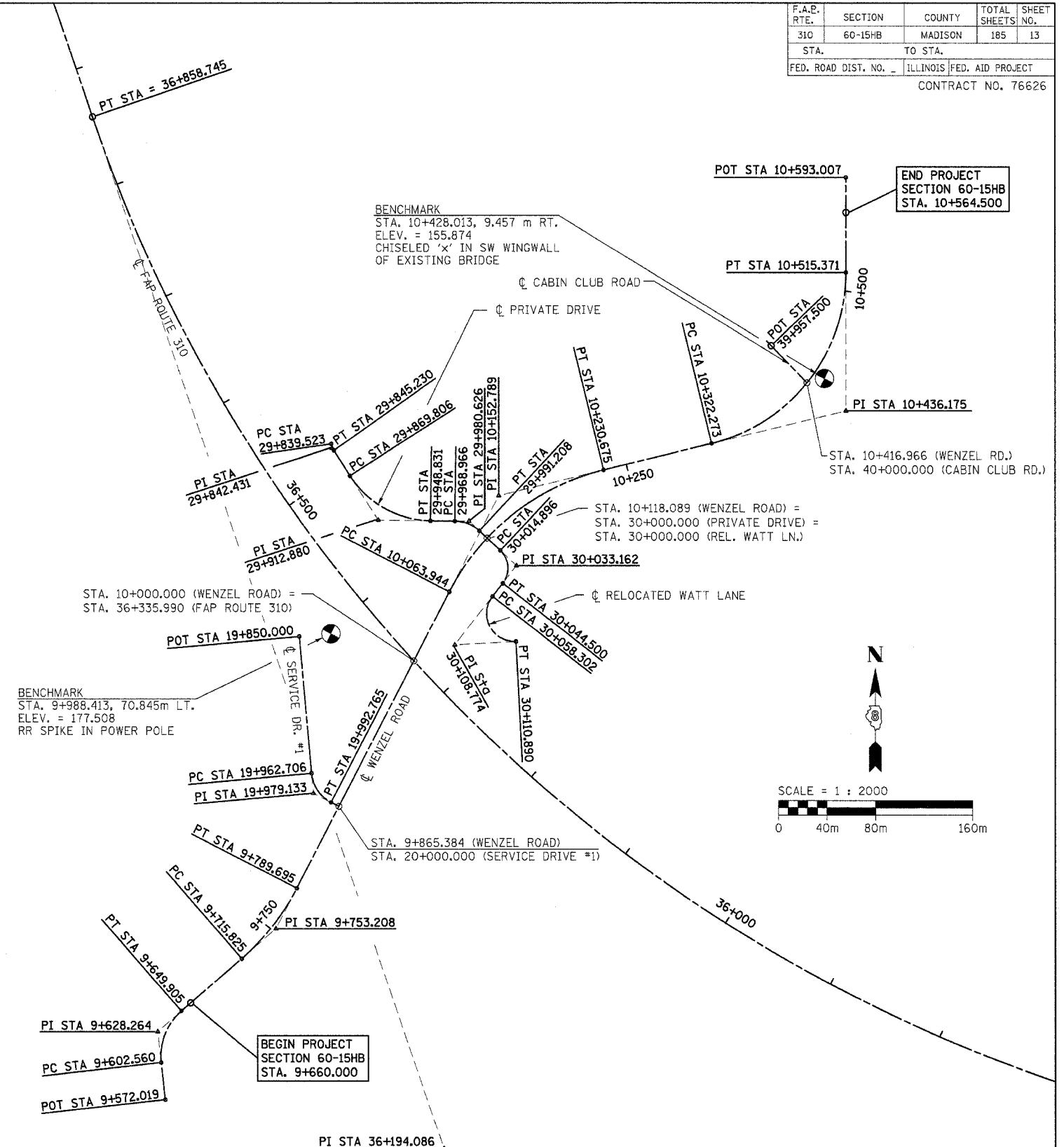
PROP. CURVE PD2
 PI STA = 29+912.880
 $\Delta = 56^\circ 35' 52''$ (LT)
 T = 43.073 m
 R = 80.000 m
 L = 79.025 m
 E = 10.859 m
 PC STA = 29+869.806
 PT STA = 29+948.831
 S.E. = N.C.

PROP. CURVE PD3
 PI STA = 29+980.626
 $\Delta = 42^\circ 28' 40''$ (RT)
 T = 11.660 m
 R = 30.000 m
 L = 22.241 m
 E = 2.186 m
 PC STA = 29+968.966
 PT STA = 29+991.208
 S.E. = N.C.

RELOCATED WATT LANE

PROP. CURVE SD2C1
 PI STA = 30+033.162
 $\Delta = 84^\circ 48' 35''$ (RT)
 T = 18.266 m
 R = 20.000 m
 L = 29.604 m
 E = 7.086 m
 PC STA = 30+014.896
 PT STA = 30+044.500
 S.E. = N.C.

PROP. CURVE SD2C2
 PI STA = 30+108.774
 $\Delta = 131^\circ 00' 11''$ (LT)
 T = 50.472 m
 R = 23.000 m
 L = 52.588 m
 E = 32.466 m
 PC STA = 30+058.302
 PT STA = 30+110.890
 S.E. = N.C.



REVISIONS		ILLINOIS DEPARTMENT OF TRANSPORTATION
NAME	DATE	
		HORIZONTAL ALIGNMENT & LOCAL TIES MADISON COUNTY SCALE: 1:2000 DATE: 04/2005 DRAWN BY: JH CHECKED BY: FML

HORIZONTAL ALIGNMENT & LOCAL TIES