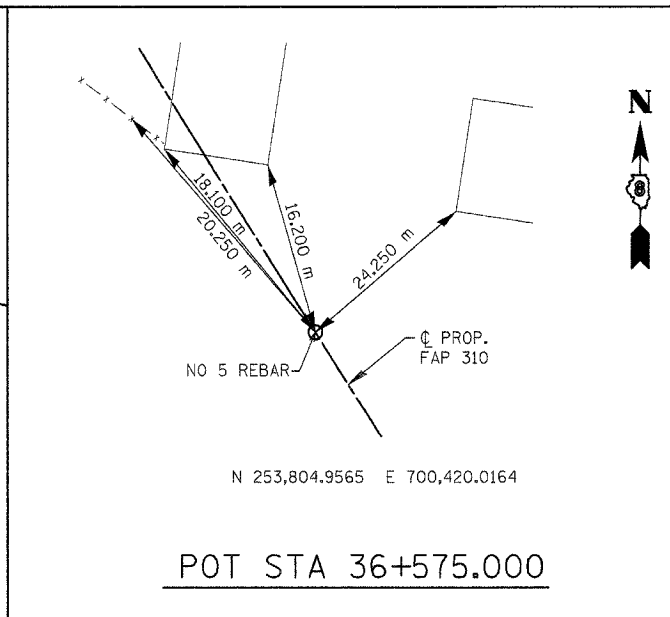
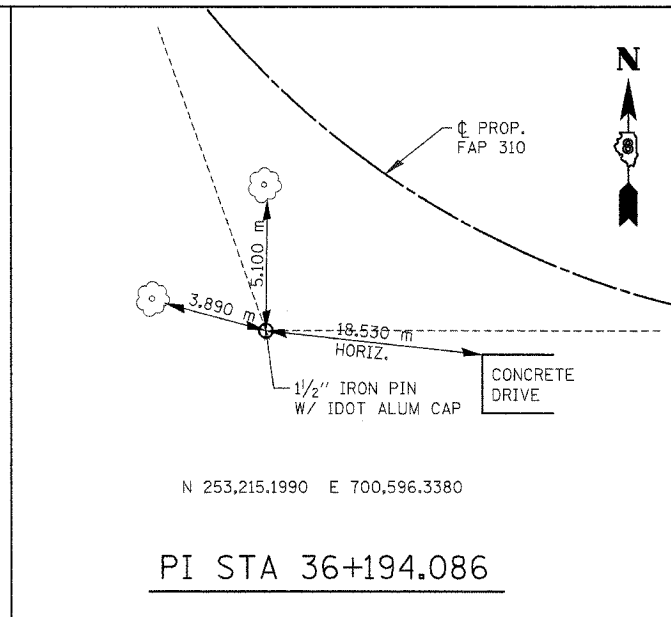
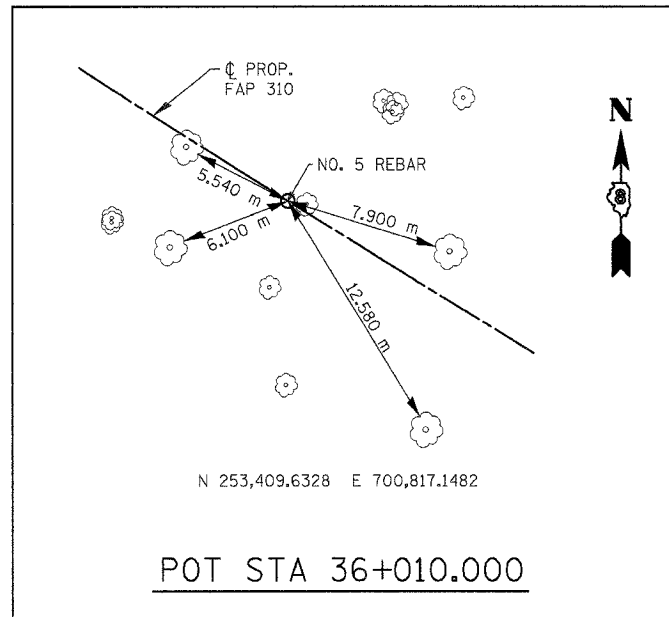
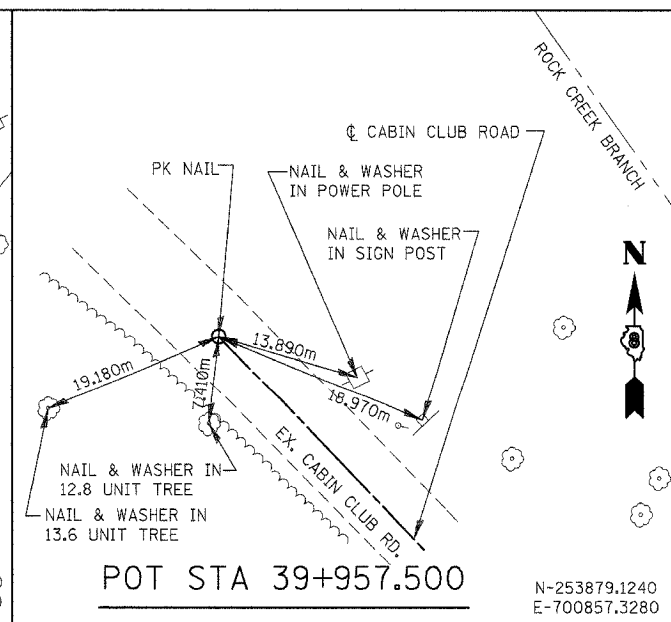
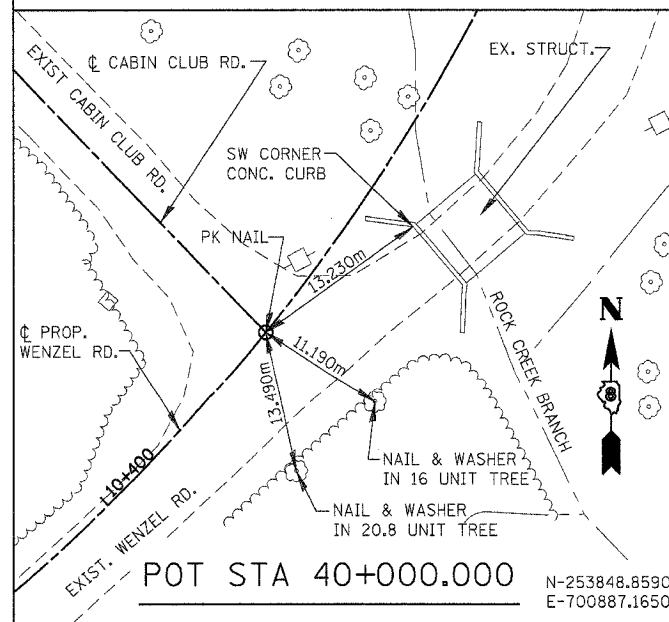


F.A.P. RTE.	SECTION	COUNTY	TOTAL SHEETS	SHEET NO.
310	60-15HB	MADISON	185	14
STA.	TO STA.			
FED. ROAD DIST. NO. -	ILLINOIS	FED. AID PROJECT		
CONTRACT NO. 76626				



FAP ROUTE 310

CABIN CLUB ROAD



**NOTES:**

TIES MAY BE LOCATED AT TREES, CULVERTS, FENCE POSTS, AND OTHER ITEMS SCHEDULED FOR REMOVAL.

ALL TIES REFERENCED FROM NAD83(1986).

ALL TIE DISTANCES ARE DIRECT UNLESS OTHERWISE NOTED.

REVISIONS		ILLINOIS DEPARTMENT OF TRANSPORTATION HORIZONTAL ALIGNMENT & LOCAL TIES FAP ROUTE 310 & CABIN CLUB ROAD MADISON COUNTY
NAME	DATE	

SCALE: NONE  
DATE: 04/2005

DRAWN BY: JH  
CHECKED BY: FML

HORIZONTAL ALIGNMENT & LOCAL TIES - FAP ROUTE 310 & CABIN CLUB ROAD