

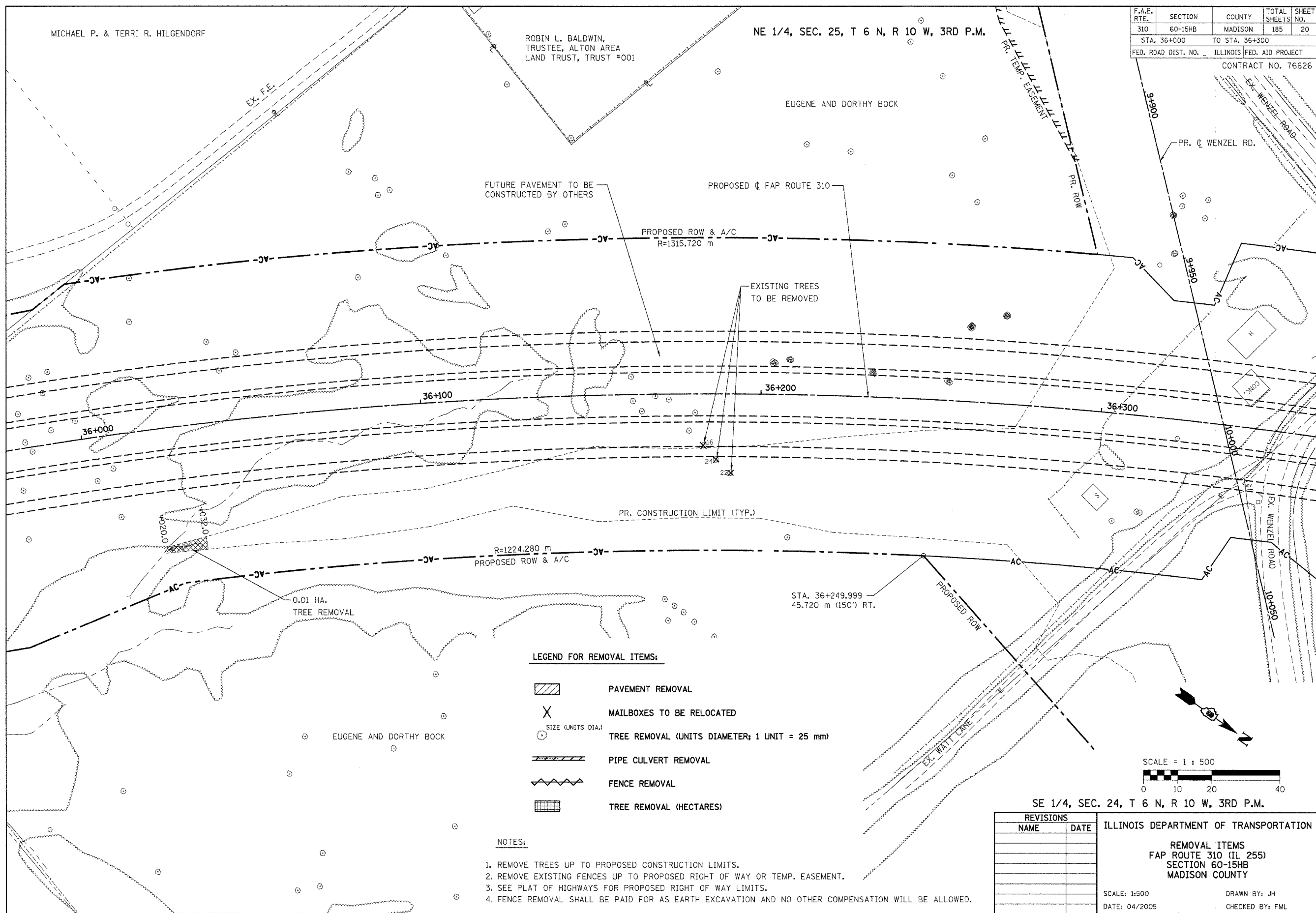
MICHAEL P. & TERRI R. HILGENDORF

ROBIN L. BALDWIN,
TRUSTEE, ALTON AREA
LAND TRUST, TRUST #001






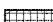
NE 1/4, SEC. 25, T 6 N, R 10 W, 3RD P.M.

EUGENE AND DORTHY BOCK

F.A.P. RTE.	SECTION	COUNTY	TOTAL SHEETS	SHEET NO.
310	60-15HB	MADISON	185	20
STA. 36+000		TO STA. 36+300		
FED. ROAD DIST. NO.		ILLINOIS FED. AID PROJECT		
CONTRACT NO. 76626				



LEGEND FOR REMOVAL ITEMS:

-  PAVEMENT REMOVAL
-  MAILBOXES TO BE RELOCATED
-  TREE REMOVAL (UNITS DIAMETER; 1 UNIT = 25 mm)
-  PIPE CULVERT REMOVAL
-  FENCE REMOVAL
-  TREE REMOVAL (HECTARES)

NOTES:

1. REMOVE TREES UP TO PROPOSED CONSTRUCTION LIMITS.
2. REMOVE EXISTING FENCES UP TO PROPOSED RIGHT OF WAY OR TEMP. EASEMENT.
3. SEE PLAT OF HIGHWAYS FOR PROPOSED RIGHT OF WAY LIMITS.
4. FENCE REMOVAL SHALL BE PAID FOR AS EARTH EXCAVATION AND NO OTHER COMPENSATION WILL BE ALLOWED.

SE 1/4, SEC. 24, T 6 N, R 10 W, 3RD P.M.

REVISIONS		ILLINOIS DEPARTMENT OF TRANSPORTATION
NAME	DATE	
		REMOVAL ITEMS FAP ROUTE 310 (IL 255) SECTION 60-15HB MADISON COUNTY SCALE: 1:500 DATE: 04/2005 DRAWN BY: JH CHECKED BY: FML

REMOVAL ITEMS - FAP ROUTE 310