







LEGEND FOR REMOVAL ITEMS:

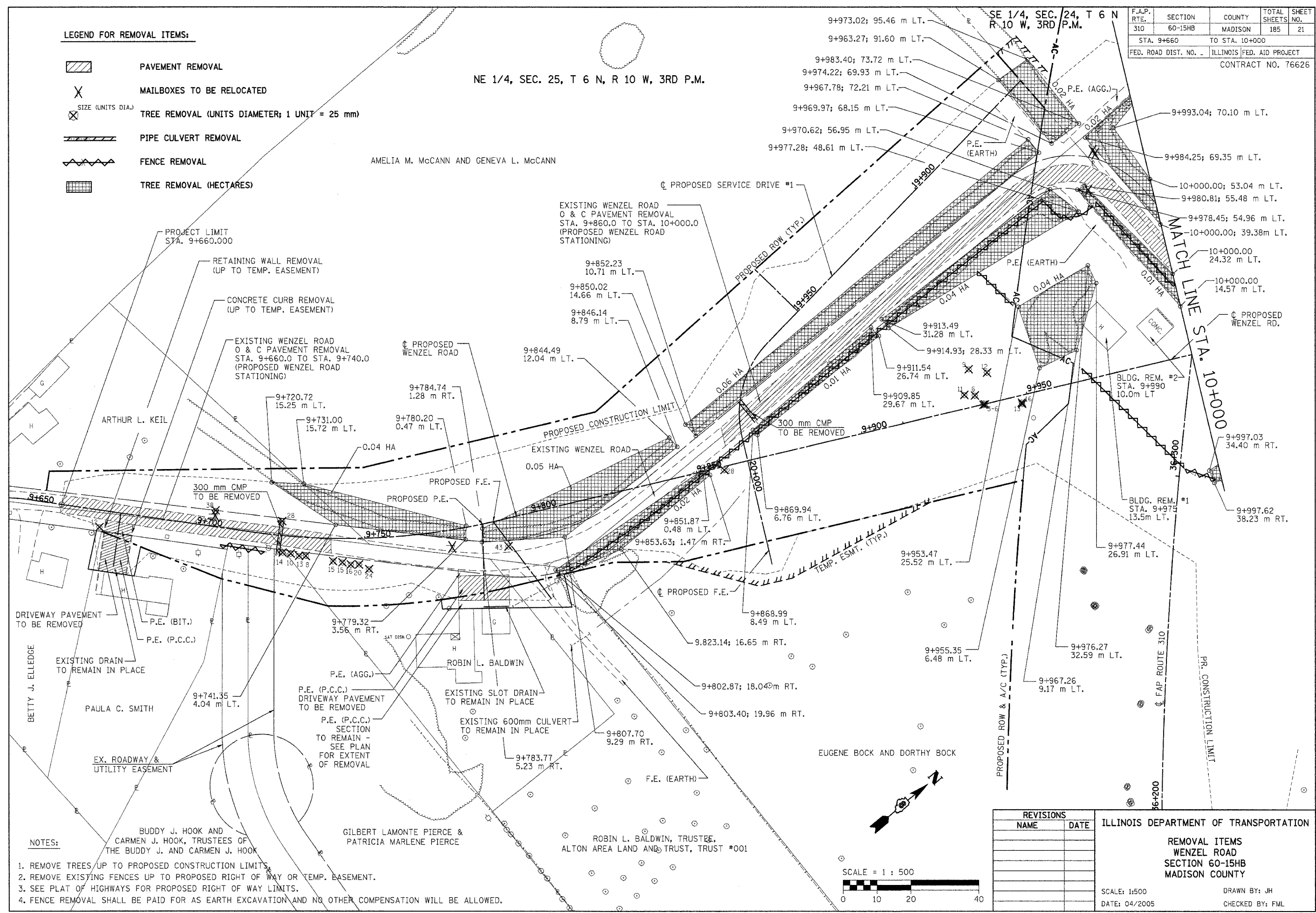
-  PAVEMENT REMOVAL
-  MAILBOXES TO BE RELOCATED
-  TREE REMOVAL (UNITS DIAMETER; 1 UNIT = 25 mm)
-  PIPE CULVERT REMOVAL
-  FENCE REMOVAL
-  TREE REMOVAL (HECTARES)

NE 1/4, SEC. 25, T 6 N, R 10 W, 3RD P.M.

AMELIA M. McCANN AND GENEVA L. McCANN

SE 1/4, SEC. 24, T 6 N
R 10 W, 3RD P.M.

F.A.P. RTE.	SECTION	COUNTY	TOTAL SHEETS	SHEET NO.
310	60-15HB	MADISON	185	21
STA. 9+660		TO STA. 10+000		
FED. ROAD DIST. NO. -		ILLINOIS FED. AID PROJECT		
CONTRACT NO. 76626				

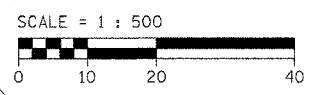


- NOTES:**
1. REMOVE TREES UP TO PROPOSED CONSTRUCTION LIMITS.
 2. REMOVE EXISTING FENCES UP TO PROPOSED RIGHT OF WAY OR TEMP. BASEMENT.
 3. SEE PLAT OF HIGHWAYS FOR PROPOSED RIGHT OF WAY LIMITS.
 4. FENCE REMOVAL SHALL BE PAID FOR AS EARTH EXCAVATION AND NO OTHER COMPENSATION WILL BE ALLOWED.

REVISIONS	
NAME	DATE

ILLINOIS DEPARTMENT OF TRANSPORTATION
**REMOVAL ITEMS
 WENZEL ROAD
 SECTION 60-15HB
 MADISON COUNTY**

SCALE: 1:500
 DATE: 04/2005
 DRAWN BY: JH
 CHECKED BY: FML



REMOVAL ITEMS - STA. 9+660 TO STA. 10+000